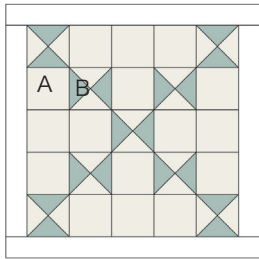


# Sewcial Bee Sampler

sharon holland and  
Maureen Cracknell →→→

## #10 BUTTERFLY CROSSING



### Material List

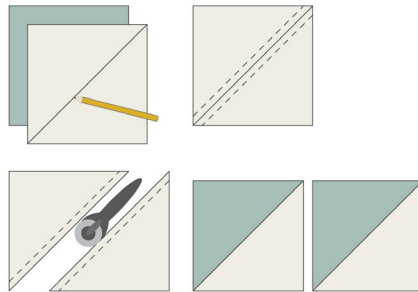
- (5) 3-1/4" squares and (16) 2-1/2" squares fabric A
- (5) 3-1/4" squares fabric B
- (2) 1-1/2" x 12-1/2" strips and (2) 1-1/2" x 10-1/2" strips for frames

Read through all instructions before beginning. Remove selvages. Sew pieces right sides together and use a 1/4" seam throughout unless otherwise stated.

### Quarter-Square Triangles

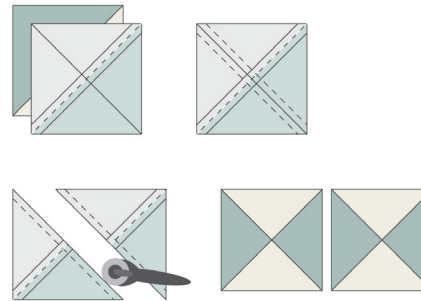
1. Draw a diagonal line on the wrong side of each 3-1/4" fabric

A square. Place a marked square right sides together with a 3-1/4" fabric B square. Sew a 1/4" seam on each side of the drawn line. Cut apart on the line. Open and press. Makes 2 half-square triangle (HST) units. Make a total of 10 HST units.



2. Pair the HST units as shown. Draw a diagonal line perpendicular to the seam line on the wrong side of one unit. Place the marked unit right sides together with an unmarked unit with fabrics A and B together in opposite corners and seams nested. Sew a 1/4" seam on each side of the marked line. Cut apart on the line. Open and press. Makes 2 quarter-square triangle (QST) units. Make a total of 10 QST units. Note: You will have one

QST unit left over after piecing the block.



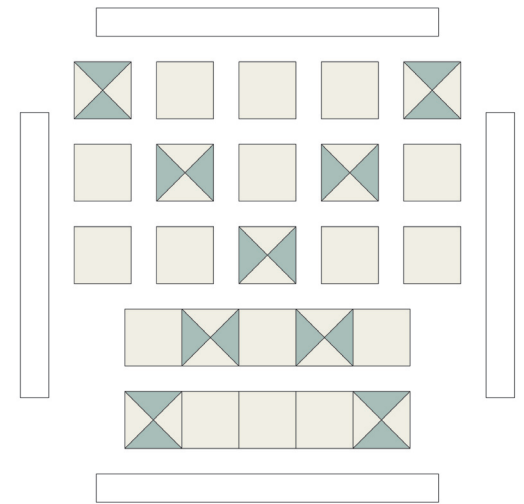
### Block Assembly

1. Referring to the Block Assembly Diagram, and noting placement and orientation, sew the 9 QST units and (16) 2-1/2" fabric A squares into 5 rows of 5 units/squares each. Join the rows to make the block.

2. Sew the (2) 1-1/2" x 10-1/2" framing strips to opposite sides of the block. Stitch the (2) 1-1/2" x 12-1/2" framing strips to the remaining sides of the block.

### Copyright

For personal use only. Reproduction of any part of this pattern in any way whatsoever without written permission is strictly prohibited. If this design is used in a quilt for display, please credit "Sharon Holland" for the design. All rights reserved. ©2017 Sharon Holland For pattern support: contact@sharonhollanddesigns.com



Block Assembly Diagram

Notes