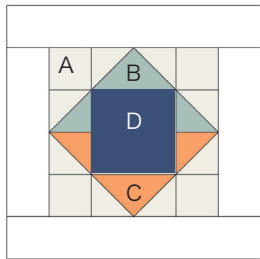


Sewcial Bee Sampler

sharon holland and
Maureen Cracknell →→→

#18 SQUARE PEG

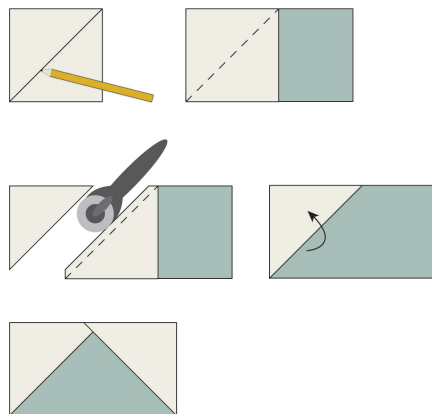


Material List

- (2) 2-7/8" squares and (8) 2-1/2" squares fabric A
- (1) 2-7/8" square and (1) 2-1/2" x 4-1/2" rectangle fabric B
- (1) 2-7/8" square and (1) 2-1/2" x 4-1/2" rectangle fabric C
- (1) 4-1/2" square fabric D
- (2) 2-1/2" x 12-1/2" rectangles and (2) 2-1/2" x 8-1/2" rectangles for frame

Read through all instructions before beginning. Remove selvages. Sew pieces right sides together and use a 1/4" seam throughout unless otherwise stated.

Quick Corners Flying Geese Units
Draw a diagonal line on the wrong side of (4) 2-1/2" fabric A squares. Noting orientation, place a marked 2-1/2" square right sides together on a corner of a 2-1/2" x 4-1/2" fabric B rectangle. Sew on the line. Tip: Sewing just outside the line on the corner side will keep the unit square. Trim 1/4" past the line. Press corner open. Noting orientation, repeat on the other corner. Make a total of 1 A/B Flying Geese unit. In the same manner, make one A/C Flying Geese unit.

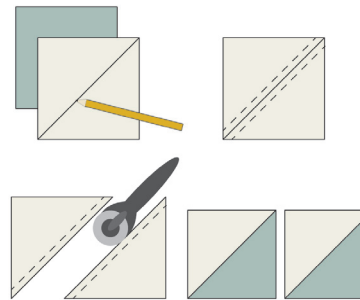


Half-Square Triangles

1. Draw a diagonal line on the

wrong side of each 2-7/8" fabric A square.

2. Place a marked 2-7/8" square right sides together with a 2-7/8" fabric B square. Sew a 1/4" seam on each side of the drawn line. Cut apart on the line. Open and press. Makes 2 half-square triangle (HST) A/B units. In the same manner, make a total of 2 A/C HST units.

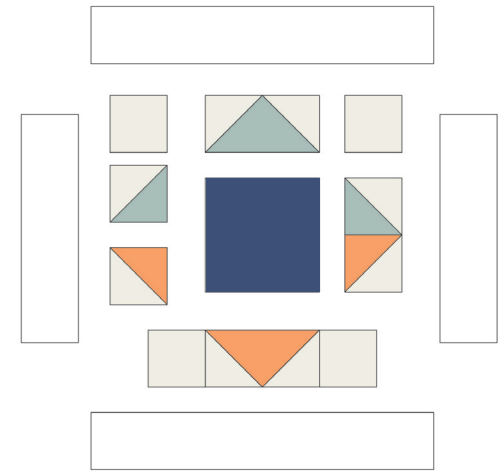


Block Assembly

1. Referring to the Block Assembly Diagram, and noting placement and orientation of the fabrics B and C, sew an A/B HST unit and an A/C HST unit together to make a HST section. Make a total of 2 HST sections. Sew the 4-1/2" fabric A square between the 2 HST sections to make a B row.

2. Sew a Flying Geese unit between (2) 2-1/2" fabric A squares to make an A row. Make 2 A rows. Join the rows to make the block.

3. Stitch the (2) 2-1/2" x 8-1/2" framing strips to opposite sides of the block. Stitch the (2) 2-1/2" x 12-1/2" framing strips to the remaining sides of the block.



Block Assembly Diagram

Notes

Copyright

For personal use only. Reproduction of any part of this pattern in any way whatsoever without written permission is strictly prohibited. If this design is used in a quilt for display, please credit "Sharon Holland" for the design. All rights reserved. ©2017 Sharon Holland For pattern support: contact@sharonhollanddesigns.com