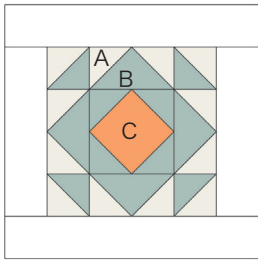


# Sewcial Bee Sampler

sharon holland and  
Maureen Cracknell →→→

## #21 HOURGLASS



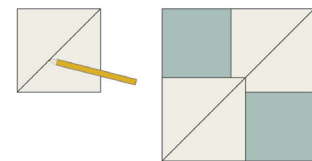
### Material List

- (6) 2-7/8" squares fabric A
- (1) 5-1/4" square, (2) 2-7/8" squares, and (4) 2-1/2" squares fabric B
- (1) 4-1/2" square fabric C
- (2) 2-1/2" x 12-1/2" rectangles and (2) 2-1/2" x 8-1/2" rectangles for frame

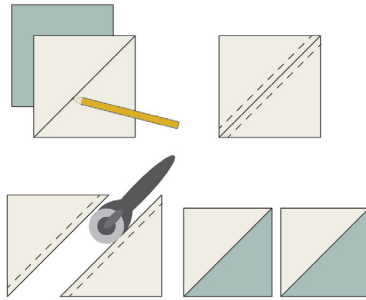
Read through all instructions before beginning. Remove selvages. Sew pieces right sides together and use a 1/4" seam throughout unless otherwise stated.

### Half-Square Triangle Units

1. Draw a diagonal line on the wrong side of each 2-7/8" fabric A square.



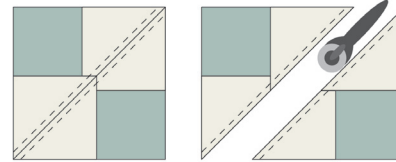
2. Place a marked 2-7/8" A square right sides together with a 2-7/8" fabric B square. Sew a 1/4" seam on each side of the drawn line. Cut apart on the line. Open and press. Makes 2 half-square triangle (HST) units. Make a total of 4 HST units.



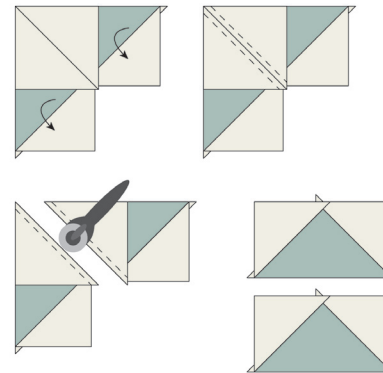
### Flying Geese Units

1. Place a marked 2-7/8" fabric A square right sides together on a corner of the 5-1/4" fabric B square. In the same manner, place another marked A square in the opposite corner as shown.

2. Sew a 1/4" seam on each side of the drawn line. Cut apart on the line. Open and press. Makes 2 Flying Geese sections.

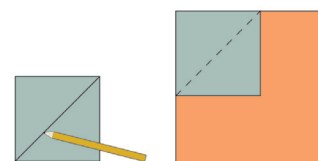


3. Noting orientation of the drawn line, place a marked A square right sides together on the fabric B corner of one Flying Geese section as shown. Sew a 1/4" seam on each side of the drawn line. Cut apart on the line to make 2 Flying Geese units. Open and press. Repeat with the remaining section for a total of 4 Flying Geese units.

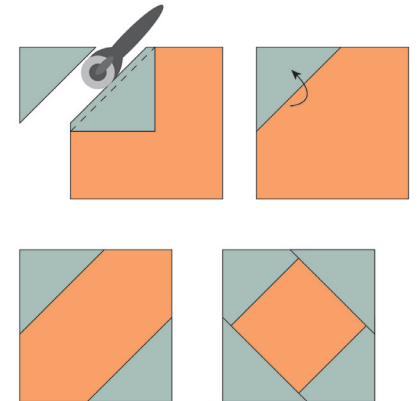


### Square in Square

1. Draw a diagonal line on the wrong side of each 2-1/2" fabric B square.



2. Noting orientation, place a marked 2-1/2" square right sides together on a corner of the 4-1/2" fabric C square. Sew on the drawn line. Tip: Sewing just outside the line on the corner side will keep the unit square. Trim 1/4" past the line. Press open. Noting orientation, repeat on the diagonally opposite corner as shown. Trim. In the same manner, add squares to the remaining corners. Makes one Square in Square unit.



### Block Assembly

1. Referring to the Block Assembly Diagram on page 2, and noting placement and orientation, sew the HST units, Flying Geese units, and Square in Square unit into 3 rows of 3 HSTs/Flying Geese units/Square in Square unit each. Join the rows to make the block.

2. Stitch the (2) 2-1/2" x 8-1/2" framing strips to opposite sides of



Block of the Week Sew Along  
#SewcialBeeSampler

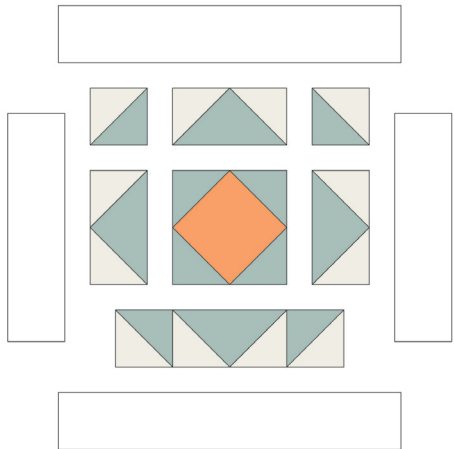
# Sewcial Bee Sampler

sharon holland and  
Maureen Cracknell >>>>

Notes:

## #21 HOURGLASS

Continued



Block Assembly Diagram

the block. Stitch the (2)  
2-1/2" x 12-1/2" framing strips to the  
remaining sides of the block.

### Copyright

For personal use only. Reproduction of any part of this pattern in any way whatsoever without written permission is strictly prohibited. If this design is used in a quilt for display, please credit "Sharon Holland" for the design. All rights reserved. ©2017 Sharon Holland For pattern support: contact@sharonhollanddesigns.com