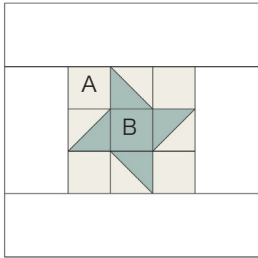


Sewcial Bee Sampler

sharon holland and
Maureen Cracknell →→→

#23 FRIENDSHIP STAR



Material List

- (2) 2-7/8" squares and (4) 2-1/2" squares fabric A
- (2) 2-7/8" squares and (1) 2-1/2" square fabric B
- (2) 3-1/2" x 6-1/2" rectangles and (2) 3-1/2" x 12-1/2" strips for frames

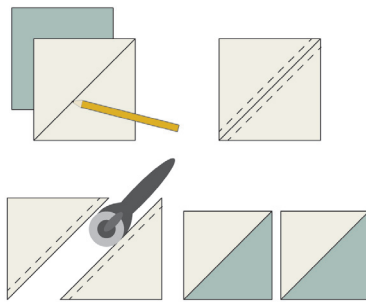
Read through all instructions before beginning. Remove selvages. Sew pieces right sides together and use a 1/4" seam throughout unless otherwise stated.

Half-Square Triangles

1. Draw a diagonal line on the

wrong side of each 2-7/8" fabric A square.

2. Place a marked 2-7/8" A square right sides together with a 2-7/8" fabric B square. Sew a 1/4" seam on each side of the drawn line. Cut apart on the line. Open and press. Makes 2 half-square triangle (HST) units. Make a total of 4 HST units.

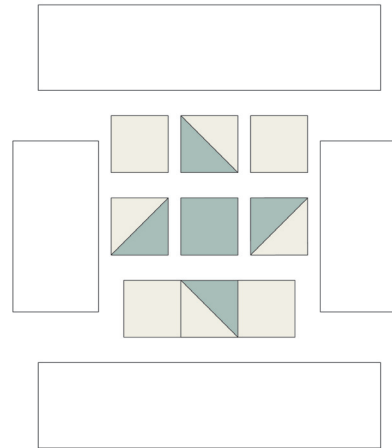


Block Assembly

1. Referring to the Block Assembly Diagram, and noting placement and orientation, sew the HST units and 2-1/2" fabric A and B squares into 3 rows of 3 HSTs/squares each. Join the rows to make the block.

2. Stitch the (2) 3-1/2" x 6-1/2" framing strips to opposite sides of

the block. Stitch the (2) 3-1/2" x 12-1/2" framing strips to the remaining sides of the block.



Block Assembly Diagram

Notes

Copyright

For personal use only. Reproduction of any part of this pattern in any way whatsoever without written permission is strictly prohibited. If this design is used in a quilt for display, please credit "Sharon Holland" for the design. All rights reserved. ©2017 Sharon Holland For pattern support: contact@sharonhollanddesigns.com