

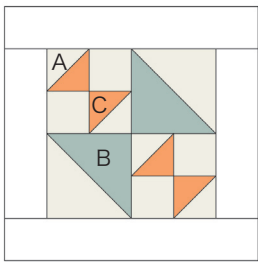
Block of the Week Sew Along

#SewcialBeeSampler

Sewcial Bee Sampler

sharon holland and
Maureen Cracknell →→→

#24 CROSSES AND LOSSES



Material List

- (1) 4-7/8" square, (2) 2-7/8" squares, and (4) 2-1/2" squares fabric A
- (1) 4-7/8" square fabric B
- (2) 2-7/8" squares fabric C
- (2) 2-1/2" x 12-1/2" rectangles and (2) 2-1/2" x 8-1/2" rectangles for frame

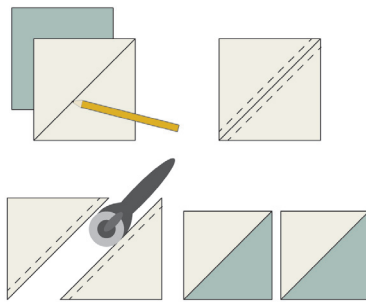
Read through all instructions before beginning. Remove selvages. Sew pieces right sides together and use a 1/4" seam throughout unless otherwise stated.

Half-Square Triangles

1. Draw a diagonal line on the

wrong side of the 4-7/8" fabric A square.

2. Place the marked 4-7/8" square right sides together with the 4-7/8" fabric B square. Sew a 1/4" seam on each side of the drawn line. Cut apart on the line. Open and press. Makes 2 large half-square triangle (HST) units.



3. In the same manner as in Steps 1 and 2, mark the 2-7/8" fabric A squares. Place and sew the marked squares with the 2-7/8" fabric C squares to make a total of 4 small HST units

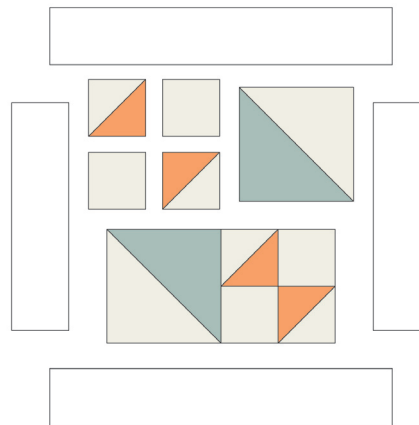
Block Assembly

1. Referring to the Block Assembly Diagram, and noting placement and orientation, sew 2 small HST

units and (2) 2-1/2" fabric A squares into 2 rows of 2 small HSTs/squares each. Join the rows to make one section. Make a total of 2 sections.

2. Sew the large HST units and sections together into 2 rows of 2 large HSTs/sections each. Join the rows to make the block.

3. Stitch the (2) 2-1/2" x 8-1/2" framing strips to opposite sides of the block. Stitch the (2) 2-1/2" x 12-1/2" framing strips to the remaining sides of the block.



Block Assembly Diagram

Copyright

For personal use only. Reproduction of any part of this pattern in any way whatsoever without written permission is strictly prohibited. If this design is used in a quilt for display, please credit "Sharon Holland" for the design. All rights reserved. ©2017 Sharon Holland For pattern support: contact@sharonhollanddesigns.com

Notes