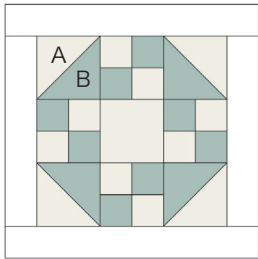


Sewcial Bee Sampler

sharon holland and
Maureen Cracknell →→→

#25 PRAIRIE QUEEN



Material List

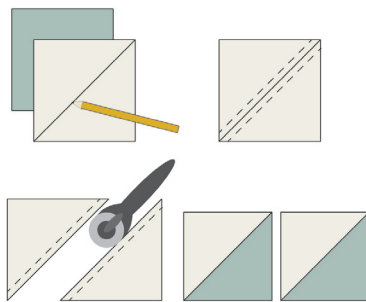
- (2) 3-7/8" squares, (1) 3-1/2" square, and (8) 2" squares fabric A
- (2) 3-7/8" squares and (8) 2" squares fabric B
- (2) 2" x 12-1/2" rectangles and (2) 2" x 9-1/2" rectangles for frame

Read through all instructions before beginning. Remove selvages. Sew pieces right sides together and use a 1/4" seam throughout unless otherwise stated.

Half-Square Triangles

1. Draw a diagonal line on the wrong side of both 3-7/8" fabric A squares.

2. Place a marked 3-7/8" square right sides together with a 3-7/8" fabric B square. Sew a 1/4" seam on each side of the drawn line. Cut apart on the line. Open and press. Makes 2 half-square triangle (HST) units. Make a total of 4 HST units.



Four Patch Units

Noting placement, sew (2) 2" fabric A squares to (2) 2" fabric B squares, alternating paired squares as shown into 2 rows of 2 squares each. Join rows to make a Four Patch unit. Make a total of 4 Four Patch units.

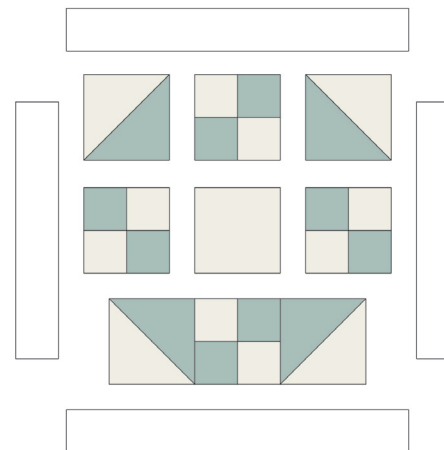


Block Assembly

1. Referring to the Block Assembly Diagram, sew 1 Four Patch unit between 2 HST units to make row A. Make a total of 2 A rows.

2. Sew the 3-1/2" fabric A square between 2 Four Patch units to make row B. Join the rows to make the block.

3. Stitch the (2) 2" x 9-1/2" framing strips to opposite sides of the block. Stitch the (2) 2" x 12-1/2" framing strips to the remaining sides of the block.



Block Assembly Diagram

Copyright

For personal use only. Reproduction of any part of this pattern in any way whatsoever without written permission is strictly prohibited. If this design is used in a quilt for display, please credit "Sharon Holland" for the design. All rights reserved. ©2017 Sharon Holland For pattern support: contact@sharonhollanddesigns.com

Notes