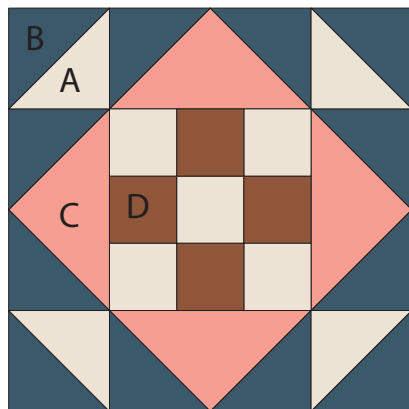
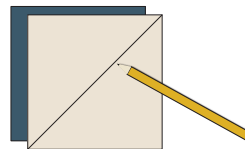


Dovecote

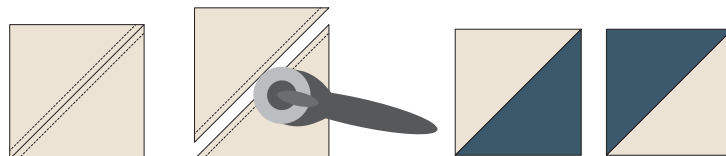


Half-Square Triangle Units

1. Draw a diagonal line on the wrong side of each 4" fabric A square.



2. Place a marked square right sides together with a same-size fabric B square. Sew a 1/4" seam on each side of the drawn line. Cut apart on the line to make two Half-Square Triangle (HST) units. Trim units to 3-1/2" square. Make a total of four HST units.



CUT

•Fabric A

- » Two 4" squares
- » Five 2-1/2" squares

•Fabric B

- » Four 4-1/8" squares
- » Two 4" squares

•Fabric C

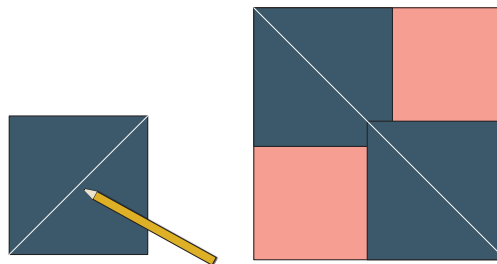
- » One 7-1/2" square

•Fabric D

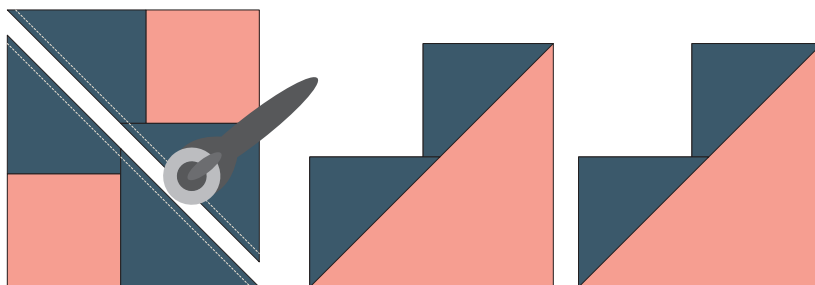
- » Four 2-1/2" squares

No-Waste Flying Geese Units

1. Draw a diagonal line on the wrong side of the four 4-1/8" fabric B squares. Place a marked square right sides together on the the corner of the 7-1/2" fabric C square. In the same manner, place another marked B square in the opposite corner, overlapping the squares in the center as shown.



2. Sew a 1/4" seam on each side of the drawn line. Cut apart on the line. Open and press. Makes 2 Flying Geese sections.

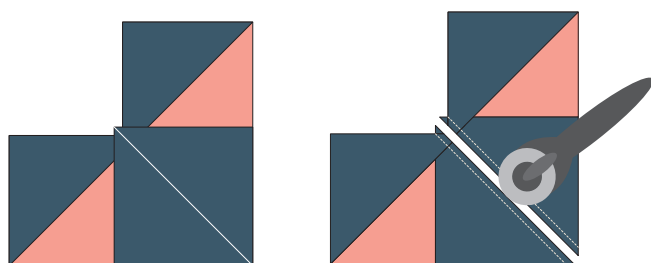


Read through all instructions before beginning. Remove selvages. Cut pieces exactly as listed in instructions. Sew pieces right sides together and use an accurate 1/4" seam allowance.

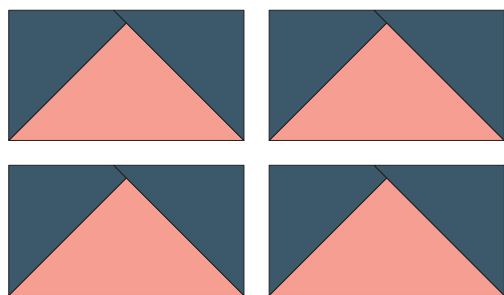


Dovecote Page 2

3. Noting orientation of the drawn line, place a marked B square right sides together on the fabric C corner of one Flying Geese section as shown. Sew a 1/4" seam on each side of the drawn line. Cut apart on the line to make two Flying Geese units. Open and press. Trim units to a 3-1/2" x 6-1/2" rectangle, leaving a 1/4" seam allowance on each side.



4. Repeat Step 3 with the remaining section for a total of four Flying Geese units.



Nine-Patch Unit

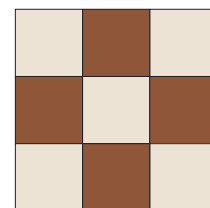
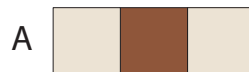
1. Sew one 2-1/2" fabric D square between two 2-1/2" fabric A squares to make an A row. Make a total of two A rows.



2. Sew one 2-1/2" fabric A square between two 2-1/2" fabric D squares to make a B row.



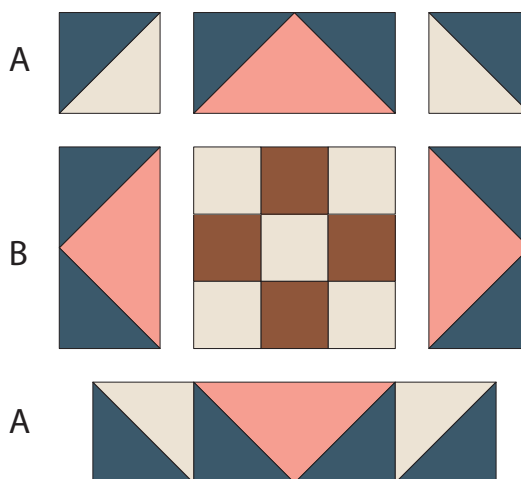
3. Join the rows to make a 6-1/2" square Nine-Patch unit.



BLOCK ASSEMBLY

1. Referring to the Block Assembly Diagram and noting placement and orientation, sew one Flying Geese unit between two HST units to make an A row. Make a total of two A rows.

2. Sew the Nine-Patch unit between two Flying Geese units to make a B row. Join the rows to make a block. Trim to 12-1/2" square.



Block Assembly Diagram

COPYRIGHT

For personal use only. Reproduction or distribution of any part of this pattern in any way whatsoever without written permission is strictly prohibited. If this design is used in a quilt for display, please credit, "Sharon Holland" for the design. All rights reserved. ©2018 Sharon Holland. For pattern support: contact@sharonhollanddesigns.com