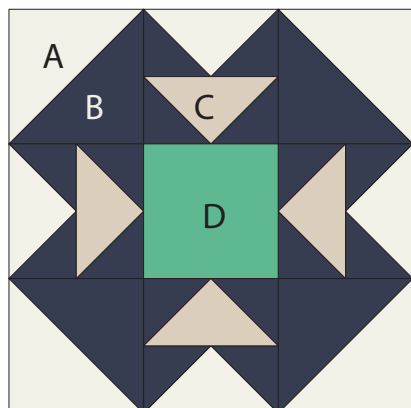
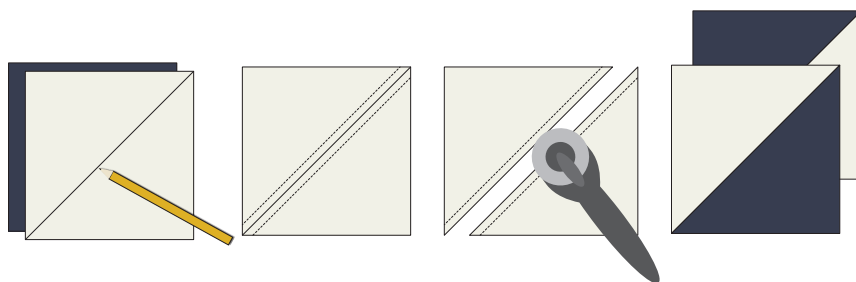


## Double-T



### Half-Square Triangle Units

1. Draw a diagonal line on the wrong side of each 5" fabric A square. Place a marked square right sides together with a same-size fabric B square. Sew a ¼" seam on each side of the drawn line. Cut apart on the line to make two Half-Square Triangle (HST) units. Trim units to 4-½" square. Make a total of four HST units.



### CUT

#### •Fabric A

- » Two 5" squares
- » One 5-½" square

#### •Fabric B

- » Two 5" squares
- » Eight 3-⅛" squares

#### •Fabric C

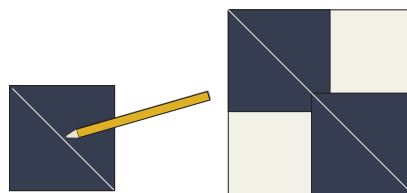
- » One 5-½" square

#### •Fabric D

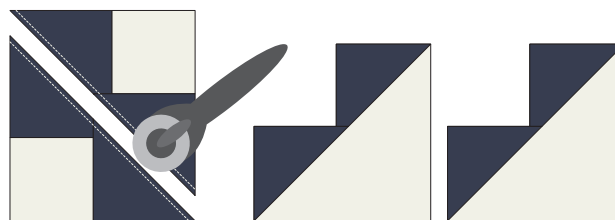
- » One 4-½" square

### No-Waste Flying Geese Units

1. Draw a diagonal line on the wrong side of four 3-⅛" fabric B squares. Place a marked square right sides together on the the corner of the 5-½" fabric A square. In the same manner, place another marked B square in the opposite corner, overlapping the squares in the center as shown.



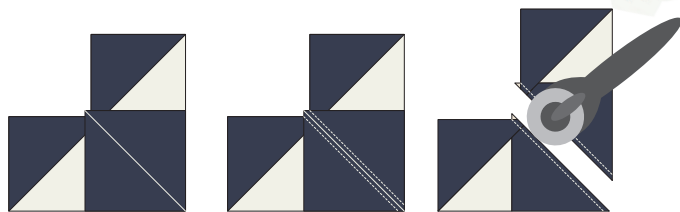
2. Sew a ¼" seam on each side of the drawn line. Cut apart on the line. Open and press. Makes 2 Flying Geese sections.



3. Noting orientation of the drawn line, place a marked B square right sides together on the fabric A corner of one Flying Geese section as shown. Sew a ¼" seam on each side of the drawn line. Cut apart on the line to make two A/B Flying Geese units. Open and press. Trim units to measure 2-½" x 4-½", leaving a ¼" seam allowance on each side. See illustrations on page 2. Repeat with the remaining section for a total of four A/B Flying Geese units.

Read through all instructions before beginning. Remove selvages. Cut pieces exactly as listed in instructions. Sew pieces right sides together and use an accurate ¼" seam allowance.

## Double-T Page 2



A/B

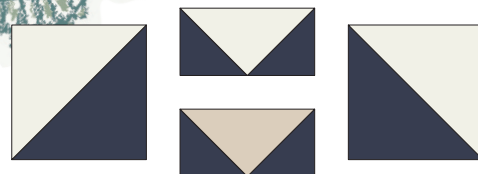


4. In the same manner as Steps 1 through 4, make a total of four B/C Flying Geese units.

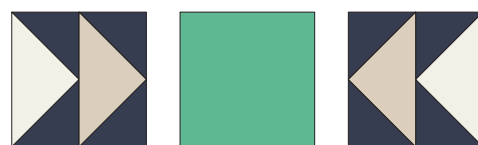
B/C



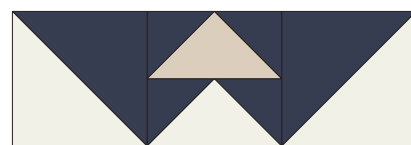
A



B



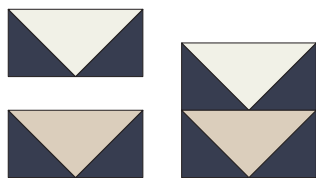
A



Block Assembly Diagram

### BLOCK ASSEMBLY

1. Noting placement and orientation, sew an A/B Flying Geese unit to a B/C Flying Geese unit to make a Flying Geese section. Make a total of four Flying Geese sections.



2. Referring to the Block Assembly Diagram and noting placement and orientation, sew one Flying Geese section between two HST units to make an A row. Make a total of two A rows.

3. Sew the 4-1/2" fabric D square between two Flying Geese sections to make a B row.

4. Join the rows to make a block. Trim to 12-1/2" square.

#### COPYRIGHT

For personal use only. Reproduction or distribution of any part of this pattern in any way whatsoever without written permission is strictly prohibited. If this design is used in a quilt for display, please credit, "Sharon Holland" for the design. All rights reserved. ©2018 Sharon Holland. For pattern support: [contact@sharonhollanddesigns.com](mailto:contact@sharonhollanddesigns.com)

Notes