

Borders

CUT

•Inner border

» Three 2-½" x 42" strips

•Middle border

» Two 5-½" x 42" strip cut into fourteen 5-½" squares for Flying Geese units

» Two 4-½" x 42" strips cut into twelve 4-½" x 5-¾" A rectangles

» Two 4-½" x 42" strips cut into twelve 4-½" x 5" B rectangles

» Four 4-½" corner squares

» Six 3-⅛" x 42" strips cut into fifty-six 3-⅛" squares for triangles in Flying Geese units

•Outer border

» Seven 2-½" x 42" strips

Read through all instructions before beginning. Remove selvages. Cut pieces exactly as listed in instructions. Sew pieces right sides together and use an accurate ¼" seam allowance.

INNER BORDER

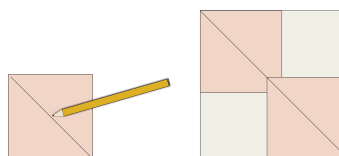
1. Stitch the three inner border 2-½" x 42" strips short ends together to make one long strip. Press seams open to reduce bulk.

2. Measure the long sides of the quilt top and average those numbers. Cut two inner border strips to that measurement from the long strip. Sew to the long sides of the quilt.

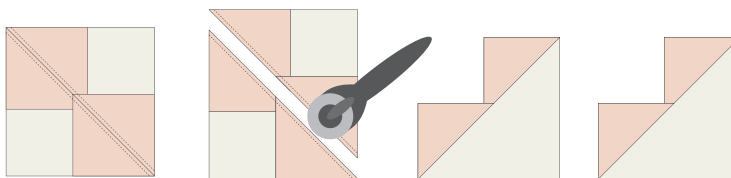
MIDDLE BORDER

No-Waste Flying Geese Units

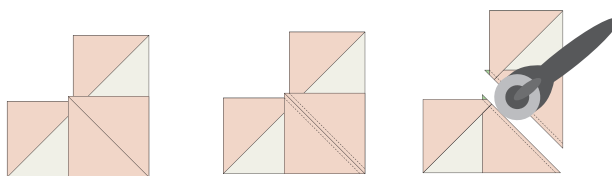
1. Draw a diagonal line on the wrong side on all 3-⅛" fabric squares. Place a marked square right sides together on the corner of the 5-½" square. In the same manner, place another marked square in the opposite corner, overlapping the squares in the center as shown.



2. Sew a ¼" seam on each side of the drawn line. Cut apart on the line. Open and press. Makes 2 Flying Geese sections.



3. Noting orientation of the drawn line, place a marked square right sides together on the corner of one Flying Geese section as shown. Sew a ¼" seam on each side of the drawn line. Cut apart on the line to make two Flying Geese units. Open and press. Trim units to measure 2-½" x 4-½", leaving a ¼" seam allowance on each side.



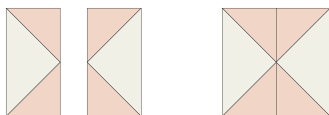
4. Repeat Step 3 with the remaining section for a total of four Flying Geese units. Make a total of fifty-six Flying Geese units.

Borders Page 2

#communitysampler



5. Noting orientation, sew Flying Geese units into pairs to make a section. Make a total of twenty-eight sections.



6. Referring to the Quilt Assembly (With Borders) Diagram on page 3 and noting placement, alternately sew seven Flying Geese sections and six $4\frac{1}{2}$ " x $5\frac{3}{4}$ " A rectangles to make one inner border. Make a total of two inner borders. Stitch to the long sides of the quilt.

7. In the same manner as in Step 6, alternately sew seven Flying Geese sections, six $4\frac{1}{2}$ " x 5" B rectangles, and two $4\frac{1}{2}$ " corner squares to make one inner border. Make a total of two borders. Sew to the remaining sides of the quilt.

OUTER BORDER

1. In the same manner used to make the inner borders, stitch the seven $2\frac{1}{2}$ " x 42" strips short ends together to make one long strip. Press seams open to reduce bulk.

2. Measure the long sides of the quilt top and average those numbers. Cut two outer border strips to that measurement from the long strip. Sew to the long sides of the quilt.

3. Measure the remaining sides of the quilt, including the borders. Average those numbers and cut two outer borders to that measurement. Sew to the remaining sides of the quilt.

COPYRIGHT

For personal use only. Reproduction of any part of this pattern in any way whatsoever without written permission is strictly prohibited. If this design is used in a quilt for display, please credit "Sharon Holland" for the design. All rights reserved. ©2018 Sharon Holland. For pattern support: contact@sharonhollanddesigns.com

Border Piecing Tips:

Exact Piecing is essential for successful patchwork. If your seam allowance is off—too wide or too narrow—even a fraction, these small amounts can add up to significant differences when piecing blocks and borders. Other variables like thread and fabric thickness as well as pressing can create further opportunities for patchwork to miss the mark. When sewing multiple seams, pieces can shrink or grow in size and will not always add up. If the pieced borders are too small or too large, adjust just the rectangles between the Flying Geese units to make borders fit by adding or subtracting from the rectangles length and keeping the $4\frac{1}{2}$ " dimension the same. Do not make changes to the size of the corner squares.

You may find you'll only need to trim or increase the size of the rectangles on each end of the pieced borders to get the proper fit. If that's the case, be sure to split the difference equally between the two pieces for a balanced look to your quilt and don't forget to include the seam allowance. For further tips and tutorials on piecing your borders, visit www.sharonhollanddesigns.com and read the Community Sampler Week #14 blog post.

Notes

Borders Page 3



COPYRIGHT

For personal use only. Reproduction of any part of this pattern in any way whatsoever without written permission is strictly prohibited. If this design is used in a quilt for display, please credit "Sharon Holland" for the design. All rights reserved. ©2018 Sharon Holland. For pattern support: contact@sharonhollanddesigns.com



Quilt Assembly Diagram (with borders)