

2022 Regional Landscape Prize

THE CORNER STORE GALLERY

382 Summer Street Orange NSW 2800 | www.cornerstoregallery.com

November 9 - November 19

Online Sales Launch 8pm November 8

Motivated by her own practice of creating art inspired by local Orange region landscapes, Curator and Gallery Director Madeline Young is seeking to explore and celebrate the regions and landscapes that inspire other artists across Australia. The bi-annual Corner Store Gallery Regional Landscape Prize aims to foster established and emerging creative talent in regional Australia, and will showcase regional, rural and outback Australia in all its brilliant and beautiful glory.

There are two prizes up for grabs:

Major Prize: \$5000 cash prize, courtesy of Source Architects, and the opportunity to join our stable of artists, awarded to the overall winner of the competition.

Artists Residency: A two-week residency, at Quest Orange in 2023, to complete a body of work inspired by the Orange landscape. The final body of work will be exhibited at The Corner Store Gallery once completed and they have the opportunity to join our stable of artists. Some residency expenses will be covered courtesy of Arts OutWest Country Arts Support Program. This prize will be awarded to a finalist who demonstrates exceptional promise and who may best benefit from the opportunity.

Finalists: Laura Baker, Jarrah Johnson, Nell Symonds, Pinky Machmud, Brendan Nicholl, Ted Lewis, Josephine Wesley, Yvette De Lacy, Raphe Coombes, Bernie O'Neil, Leree Lindsay, Georgina Samuel, Harry Merriman, David Lake, Meg Walters, Linda Joy, Linda Kruger, Chris de Hoog, Alice Watson, Karima Baadilla, Roxanne Lillis, Naomi Lawler, Sarah Randall, Jacky Chan, Amelia Lynch, Jane Tonks, Amanda Holman, Marylou Verberne, Amelia Jajko, Peter Tankey, Rhonda Campbell, Helena Newcombe, Nerrida Parfitt, Nat Ward, Pippita Bennett, Sonia Martignon, Michael Bourke, Jaq Davies, Nick Baylart, Jason McDonald, Heather Dunn, Emily Eckhard, Jo Dunsmuir, Jo Fernandez.





Karima Baadilla, Small Tree At Golden Hour, 2022
Acrylic on Canvas, 14.5x20cm, framed
\$495



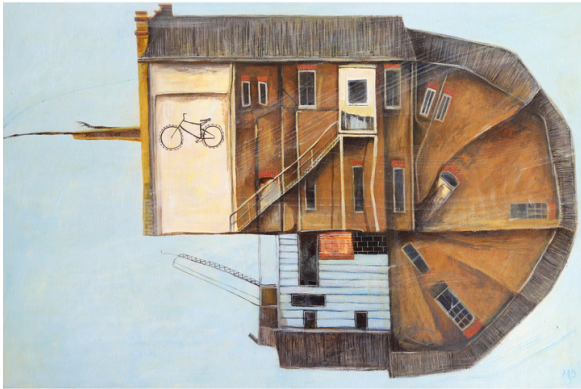
Laura Baker, Climbing Ghosts, 2022
Hand cut paper, 54x43cm, framed
\$1290



Nick Baylart, August Canola, 2022
Watercolour, coloured ink, and synthetic polymer
stained kōzo tissue on paper, 30 x 21cm, framed
\$315



Pippita Bennett, Mount Griselda, Arkaroola, 2022
Linen, wool, cotton and silk, 61x46cm, framed
\$800



Michael Bourke, Ron Boulton Marine And Cycles Is An Enormous Prawn Tumbling Through Eternity, 2022
Acrylic on Canvas, 51x76cm
\$1200



Rhonda Campbell, Through Rose Coloured Glasses... Flinders, 2022
Acrylic, mixed media, 60x60cm
\$950



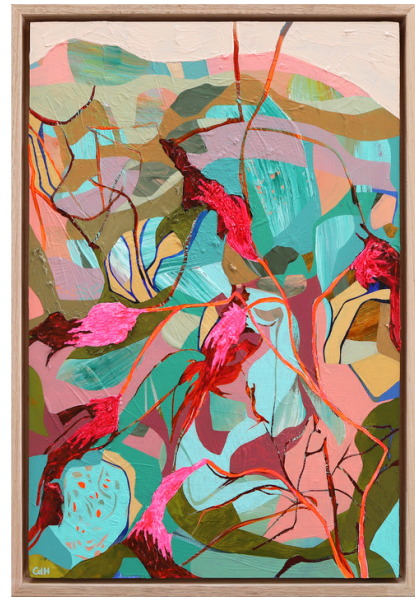
Jacky Chan, Red Eucalyptus on Mount Chalmers, 2021
Oil on board, 20x30cm, framed
\$600



Raphe Coombes, Night painting II, 2022
Oil and Graphite on board, 62x62cm, framed
\$820



Jaq Davies, Lake Mungo Mirage, 2022
Oil and Leather on board, 60x60cm, framed
\$850



Chris de Hoog, Neon Wildflowers, 2022
Acrylic on wooden board, 30x45cm, framed
\$690



Yvette de Lacy, Mountain Landscape, 2022
Stoneware, slip, underglaze, glaze, 17x14x13cm
\$350



Heather Dunn, Set in Stone, Hamersley Gorge, 2022
Woven Tapestry using cotton, silk, and wool, 40x51cm, framed
\$1500



Jo Dunsmuir, Winter Morning, Near Orange, 2022
Acrylic on canvas, 28x28cm, framed
\$280



Emily Eckhard, Pencil Pine Skeletonisation, 2022
Digital Photograph, 53x70cm, framed
\$590



Jo Fernandez, Distant View to Mt Canobolas, 2022
Oil on canvas, 64x64cm, framed
\$1300



Amanda Holman, Full Creek and Golden Grasses, 2022
Acrylic on Stretched Canvas, 63.5x63.5cm, framed
\$980



Amelia Jajko, Barrgana- Moments and Memories, 2022
Oil on Linen, 30x24cm, framed
\$490



Jarrah Johnson, Winterlong, 2022
Acrylic on canvas, 45.5x45.5cm, framed
\$1500



Linda Joy, A Magnetic Left off Tjaynera Falls Road, 2022
Ink and oil on linen, 80x30cm
\$2200



Linda Kruger, Golf Course, Toowoomba, 2022
Oil on canvas, 30x40cm, framed
\$880



David Lake, Hunter's Moon, 2022
Oil on linen on hardboard, 66x76cm, framed
\$1750



Naomi Lawler, Hazy Shades of Winter, 2022
Oil on aluminium composite panel, 66.5x37.5cm, framed
\$2100



Ted Lewis, Last Light, 2022
Oil on canvas on board, 45x60cm, framed
\$3000



Roxanne Lillis, I Follow The Property Tracks, Not Knowing Where They Lead Or Why, 2022
Acrylic on canvas, 46x60cm, framed
\$1500



Leree Lindsay, Thursday Morning Farmers Market , Byron Bay, 2022
Oil on canvas, 23x28cm, framed
\$490



Amelia Lynch, Patonga, 2022
Glazed ceramic, 27.5x21x19.5cm
\$1300



Pinky Machmud, Forest Path, 2022
Ceramic, 5-7 cm H. 7-15 cm W
\$120



Sonia Martignon, Stillness in the Blink of Twilight, 2022
Oil and tusche on hand cut plywood, 27x24.5cm, framed
\$500



Jason McDonald, Nurture Nature, 2022
Photograph, 73x53cm, framed
\$500



Harry Merriman, Memories of (Cradle Mountain), 2022
Photographic collage, 50x80cm, framed
\$650



Helena Newcombe, The Land Behind, 2022
Acrylic, Embroidery thread on Linen, 30x40cm, framed
\$500



Brendan Nicholl, A Country Lane, 2022
Oils on canvas wrapped 6mm mdf 30x40cm, framed
\$780



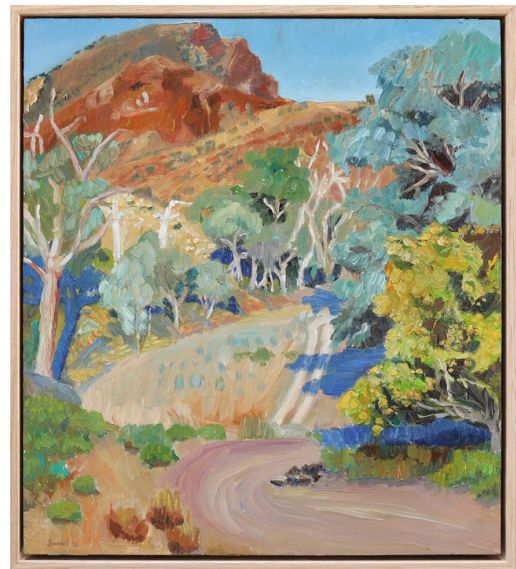
Bernie O'Neil, Tuross Lake, After Smoke, 2022
Oil on reclaimed board, 76x20.5cm
\$450



Nerrida Parfitt, Night Drive: Charged, 2022
Oil on canvas, 33x43cm, framed
\$750



Sarah Randall, High Winds, 2022
Sumi Ink on Stonehenge paper, 32x26.5cm framed
\$460



Georgina Sambell, Chambers Gorge, 2022
Oil on Masonite, 47x43cm, framed
\$900



Nell Symonds, Cadoux, 2022
Oil on Birch Board, 30x26cm, framed
\$410



Peter Tankey, Exit Ramp (Target Practice), 2022
Oil on canvas, 43x53cm, framed
\$1730



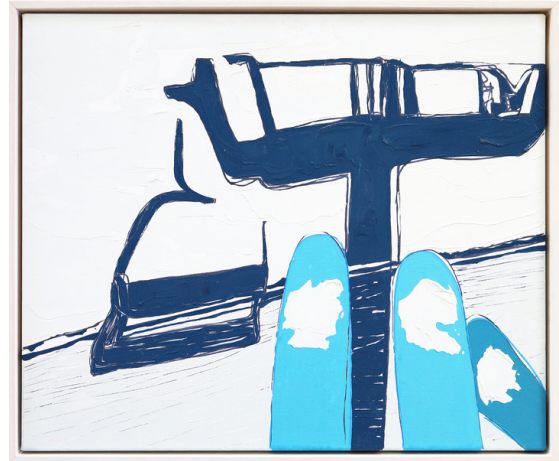
Jane Tonks, Kissing Moss And Lichen, Reaching For The Summit, 2022
Acrylic on linen, 76x61cm,
\$1580



Marylou Verberne, An Unresolved Parallel, 2022
Photograph, 210mm x 290mm, framed
\$500



Nat Ward, Wattles and Gums on Horseshoe Lagoon, 2022
Oil on canvas, 50x80cm, framed
\$2850



Alice Watson, View from a Chairlift (blue), 2022
Oil & Permanent Pen, 60x50cm, framed
\$1100



Meg Walters, We've Weathered This Storm Before, 2022
Oil on Canvas, 30x30cm, framed
\$1500



Josephine Wesley, Pink Sky At Night, 2022
Oil, 10x10cm, framed
\$200

With thanks to our Sponsors

Source Architects - \$5000 Cash Prize



Source Architects is an awarding winning architecture and interior design studio based in Orange, but working across the Central West of NSW. Source works with clients to create beautiful and inspiring spaces, from new homes and extensions through to galleries and public buildings.

At Source Architects, we are incredibly passionate about the landscapes in which we work, and are fortunate to be able to design and build homes in the unique natural settings of Central Western NSW. So much of our architecture responds to the local environment and is enhanced by it. We are proud to be based in a regional centre and support amazing artists working in all parts of Australia.

Quest Apartments Orange - 2 Week Residency



Quest Orange opened its doors in October 2019, a 77-room apartment hotel located in Central West, NSW. Quest Orange features the brand's premium range of serviced apartments, each containing modern furnishings, fully equipped kitchens and amenities designed for the modern business traveller.

We are proud locals of the Orange community and love supporting local businesses such as The Corner Store Gallery.



Judges



Annabelle Hickson

Editor of Galah Magazine, Writer,
Photographer, Podcaster



Bradley Hammond

Director of the Orange Regional
Gallery



Wilamina Russo

Artist Mentor and Arts Broadcaster



Madeline Young

Director of The Corner Store Gallery