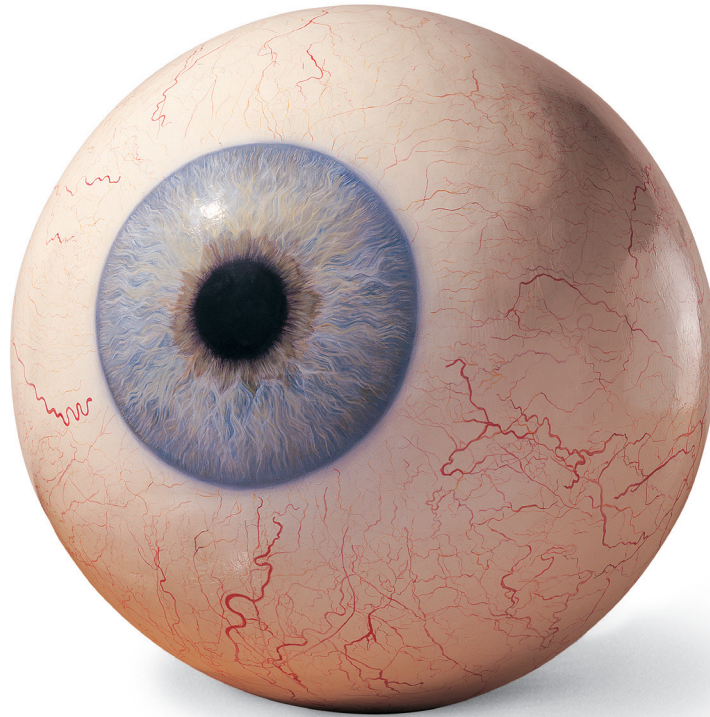


**MANA CONTEMPORARY PRESENTS POP CULTURE: SELECTIONS FROM
THE FREDERICK R. WEISMAN ART FOUNDATION**



“Tony Tasset, *Big Eye*, 2001. Acrylic and polystyrene, unique, 60 in. diameter. Frederick R. Weisman Art Foundation, Los Angeles.”

JERSEY CITY, NJ, August 16, 2013—Iconic Pop Art from one of the country’s most prestigious art collections will take over two floors at Mana Contemporary this fall. *Pop Culture: Selections from the Frederick R. Weisman Art Foundation*, presented in conjunction with the Eileen S. Kaminsky Family Foundation (ESKFF), opens Sunday, September 29 from 1:00-6:00 p.m. The event is free and open to the public and free transportation from Manhattan will be provided.

The exhibition explores the roots of the Pop Art movement in the 1950s and ‘60s and its continuing influence. Included in the show curated by the Frederick R. Weisman Art Foundation are iconic works including all 10 of Andy Warhol’s variously hued *Marilyn Monroe* silkscreens, as well as important works by Keith Haring, Jenny Holzer, Yayoi Kusama, Roy Lichtenstein, Edward Ruscha, and others.

When the Pop Art movement first began in the mid-1950s, artists sought to challenge traditional conceptions of art making by incorporating aspects of consumer culture and everyday objects into their work. Artists during this period transformed those icons associated with mass media, comic books, and popular culture into visuals that often reflected a growing societal infatuation with consumerism. When it originated, the Pop Art movement strove to ironically emphasize images representing the kitschy or clichéd elements of a given culture. Today, contemporary artists have elaborated on the traditions established by the Pop artists who created an aesthetic that reflected the changing needs and interests of varying societies.

The exhibition is curated by the Frederick R. Weisman Art Foundation and will be on view through December 28, 2013.