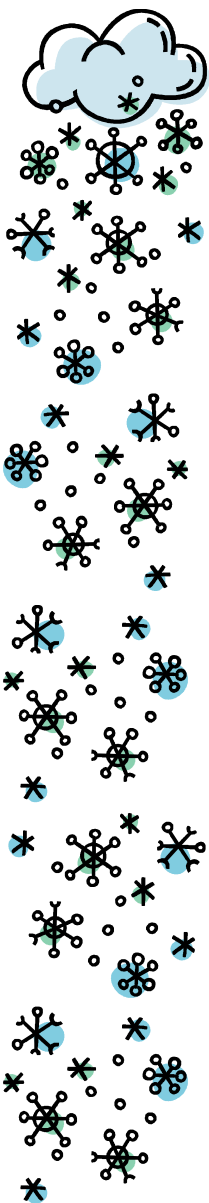


GW Community School - Inclement Weather Policy

Inclement weather can result in a late opening, early closing, or cancellation of a school day and/or afterschool activities. GWCS will follow Fairfax County Public Schools in determining whether or not to delay or close school. There are times when GWCS will make different decisions than FCPS regarding early closings. Safety is paramount and because our students travel from Maryland, Virginia and D.C. In the case of an early closing - teachers will notify the students' parents by phone and email.



NOTIFICATION RESOURCES & SPECIAL POLICIES

- **TV:** Most TV stations will list GWCS closing/delay information. Channel 9 does not list for small schools.
- **EMAIL:** GWCS will send out an email with closure/delay information – but don't depend on this alone.
- **PHONE CALLS:** If GWCS is closing early – teachers will attempt to notify parents by phone and email.
- **FOLLOW FCPS:** If Fairfax County Public Schools are closed, GWCS will be closed. If FCPS is delayed, GWCS will be delayed.
- **DIFFERENT THAN FCPS:** Occasionally, when FCPS stays open – GWCS may close because our students travel from MD, VA and DC. Once an early closing has been announced, GWCS will begin releasing students immediately.
- **GYM:** First period classes that take place off campus (for example: basketball, hiking club and personal fitness) will be canceled in the case of a one or two hour delay. Students should report to GWCS – not the gym.
- **DELAYS:** On days when school opening is delayed, **GWCS will open 15 minutes before the school day begins.** If you need to drop off your child earlier, please do so at an alternate location such as Peet's or McDonald's at Kings Park Shopping Center as GWCS staff will not be available to supervise.