



Front Elevation



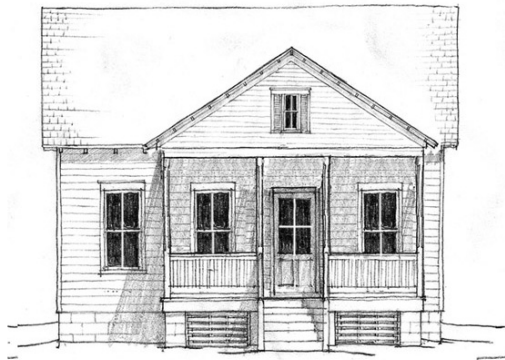
Side Elevation

SUMMARY :

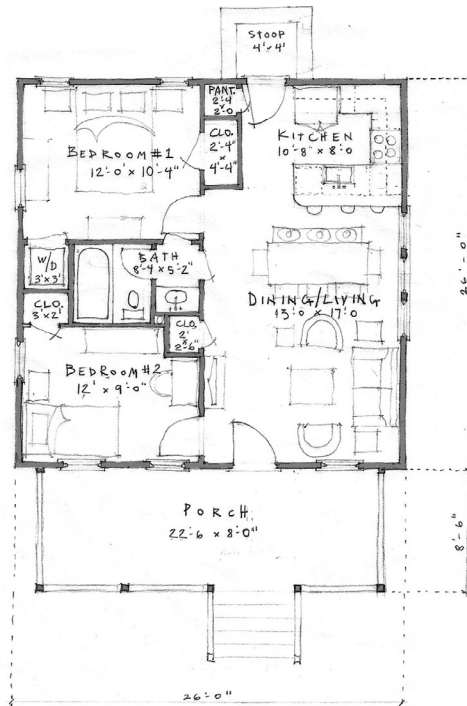
Total Area (Conditioned): 676 s.f.
 Bedrooms: 2
 Bathrooms: 1
 Width (Overall): 26'-2 1/2" (Including Siding/Trim)
 Width (Framing): 26'-0"
 Depth (Overall): 34'-6" (Including Front Porch)
 Depth (Framing): 26'-0" (Excluding Porch)

FEATURES :

- o 10'-0" Ceilings
- o Open Living, Dining, Kitchen
- o Compact, Efficient Floor-plan
- o Modular Framing Dimensions & Truss Roof for Efficiency
- o Large Front Porch
- o Flexible Footprint for Ease of Alternate Elevations
- o Large Attic



Alternate Elevation Concept (Plan pricing may vary)



Main Level
676 s.f.

All dimensions are approximate. The final set of construction documents may vary or include minor modifications.

CRAFT DESIGN STUDIO

P.O. BOX 5238 BUENA VISTA, COLORADO 81211
 704.408.5501 TEL • WWW.CRAFTDESIGN-STUDIO.COM

CDS - 676