

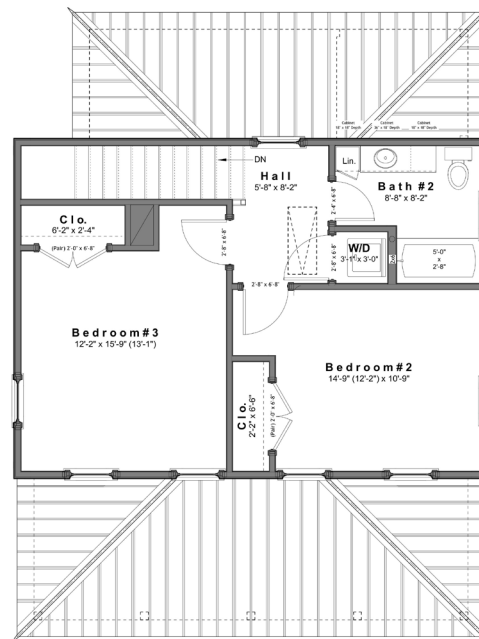
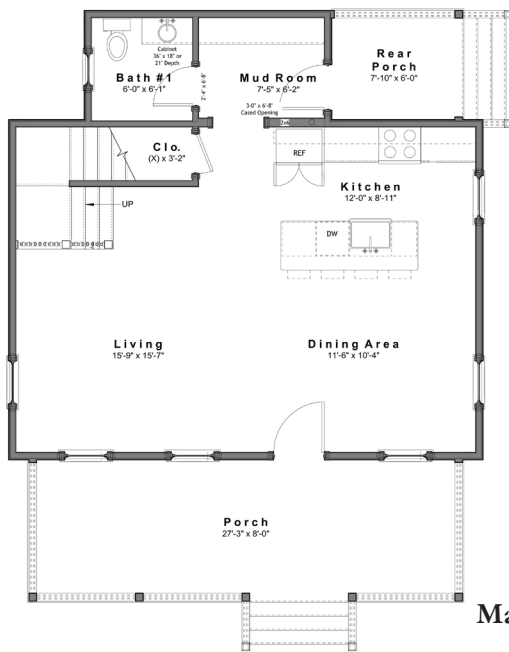


SUMMARY :

Total Area (Conditioned): 1,214 s.f.
 Bedrooms: 2
 Bathrooms: 1 1/2
 Width (Overall): 28' - 2 1/2" (Including Siding/Trim)
 Width (Framing): 28' - 0"
 Depth (Overall): 35' - 2" (Including Front Porch)
 Depth (Framing): 26' - 6" (Excluding Front Porch)

FEATURES :

- o 10'-0" Ceilings on Main Level, 9'-0" Ceilings on Upper Level
- o Open Floor Plan
- o Compact, Efficient Floor Plan
- o Light Filled Narrow Plan
- o Stackable Laundry Closet Accessible to Bedrooms



Design modifications and/or alternate elevations may be required if building within the South Main Neighborhood. All dimensions are approximate. The final set of construction documents may vary or include minor modifications.

CRAFT DESIGN STUDIO
 14312 HOLLY SPRINGS DRIVE, HUNTERVILLE, NC 28078
 704.408.5501 TEL • WWW.CRAFTDESIGN-STUDIO.COM

CDS - 1214