

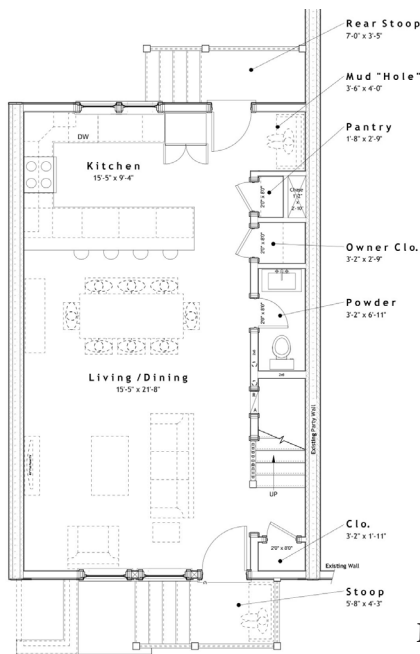


SUMMARY :

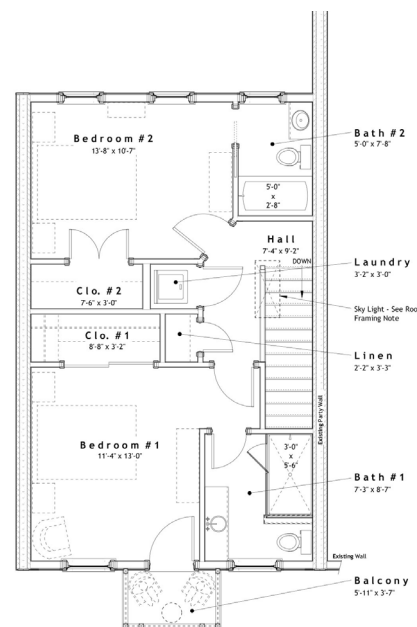
Total Area (Conditioned): 1,280 s.f.
Bedrooms: 2
Bathrooms: 2 1/2
Width (Overall): 20' - 0" (Centerline of Party Wall)
Width (Interior): 19' - 0"
Depth (Overall): 40' - 8" (Including Front & Back Stoop)
Depth (Framing): 32' - 0" (Excluding Stoops)

FEATURES :

- o 10'-0" Ceilings on Main Level, 9'-0" Ceilings on Upper Level
- o Open Main Level Floor Plan
- o Compact, Efficient Floor Plan
- o Light Filled Narrow Plan
- o Stackable Laundry Closet Accessible to Bedrooms
- o Front & Back Stoops w/ Master Balcony
- o Option: Convert to Detached & Add Side Windows



Main Level
640 s.f.



Upper Level
640 s.f.

Design modifications and/or alternate elevations may be required if building within the South Main Neighborhood. All dimensions are approximate. The final set of construction documents may vary or include minor modifications.

CRAFT DESIGN STUDIO

14312 HOLLY SPRINGS DRIVE, HUNTERVILLE, NC 28078
 704.408.5501 TEL • WWW.CRAFTDESIGN-STUDIO.COM

CDS - 1280