

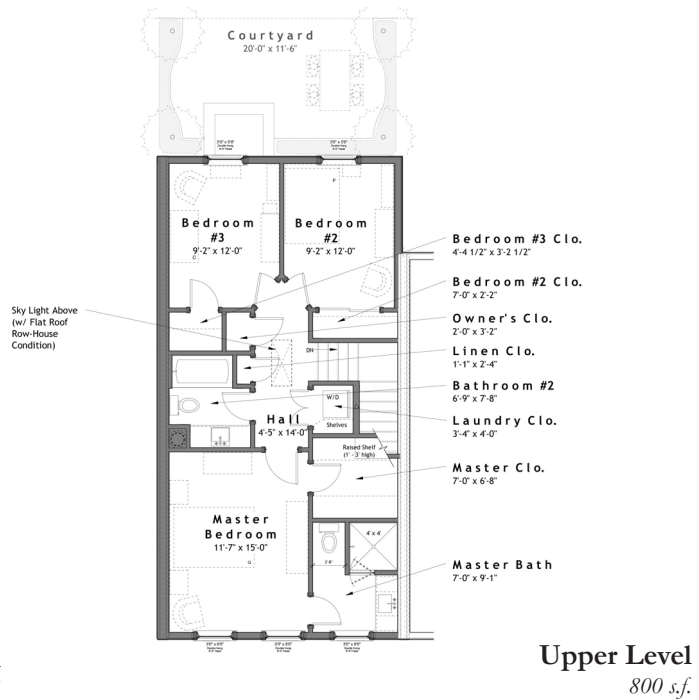
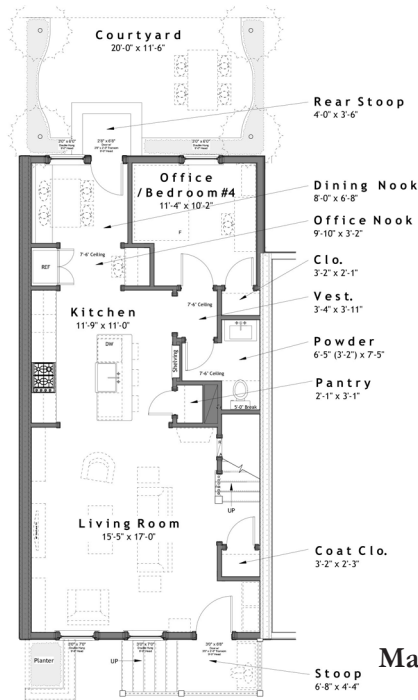


**SUMMARY :**

Total Area (Conditioned): 1,600 s.f.  
 Bedrooms: 4  
 Bathrooms: 3  
 Width (Overall): 20'- 0" (Party Wall Centerline)  
 Width (Interior): 19'- 0"  
 Depth (Overall): 45'- 0" (Including Front Stoop)  
 Depth (Framing): 40'- 0" (Excluding Stoops)

**FEATURES :**

- o 10'-0" Ceilings on Main Level, 9'-0" Ceilings on Upper Level
- o Open Main Level Floor Plan, Including Bonus Bedroom/ Office
- o Compact, Efficient Floor Plan
- o Laundry Closet Accessible to Bedrooms
- o Plan Shown as Row House, Attached on Both Sides
- o Highly Customizable
- o Option: Convert to Detached & Add Side Windows



Design modifications and/or alternate elevations may be required if building within the South Main Neighborhood. All dimensions are approximate. The final set of construction documents may vary or include minor modifications.