

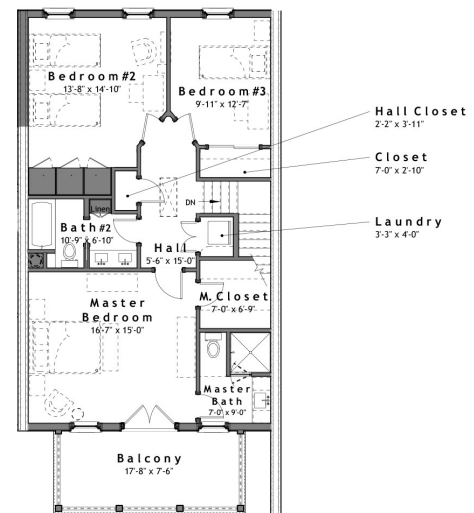
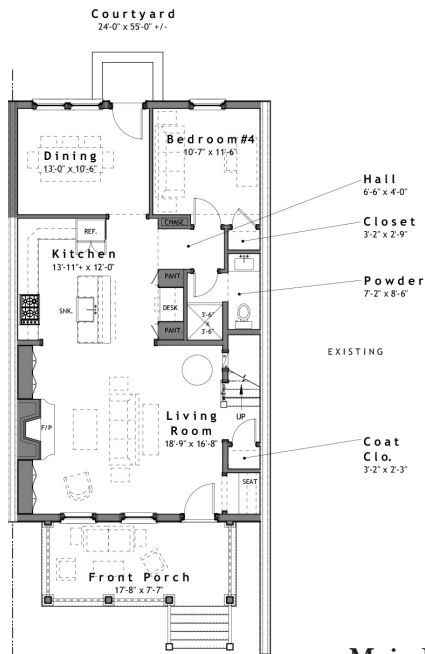


SUMMARY :

Total Area (Conditioned):	2,076 s.f.
Bedrooms:	4
Bathrooms:	2 1/2
Width (Overall):	25' - 0" (Center of Party Wall)
Width (Interior):	24' - 0"
Depth (Overall):	50' - 1" (Including Front Porch)
Depth (Framing):	41- 6" (Excluding Front Porch)

FEATURES :

- o 10'-0" Ceilings on Main Level, 9'-0" Ceilings on Upper Level
- o Open Main Level Floor Plan
- o Compact, Efficient Floor Plan
- o Stackable Laundry Closet Accessible to Bedrooms
- o Front Porch w/ Balcony on Upper Level



Design modifications and/or alternate elevations may be required if building within the South Main Neighborhood. All dimensions are approximate. The final set of construction documents may vary or include minor modifications.

CRAFT DESIGN STUDIO

14312 HOLLY SPRINGS DRIVE, HUNTERVILLE, NC 28078
704.408.5501 TEL • WWW.CRAFTDESIGN-STUDIO.COM

CDS - 2076