

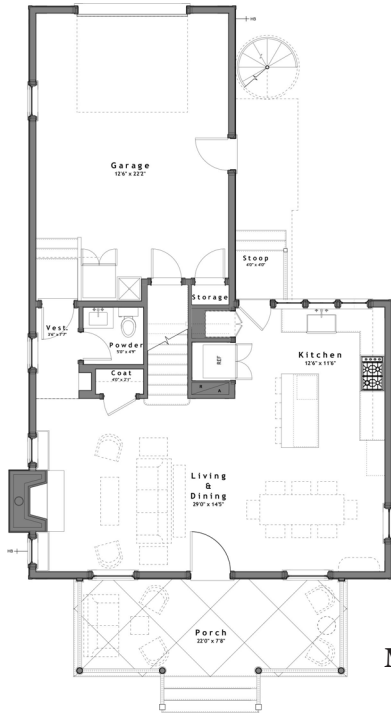


SUMMARY :

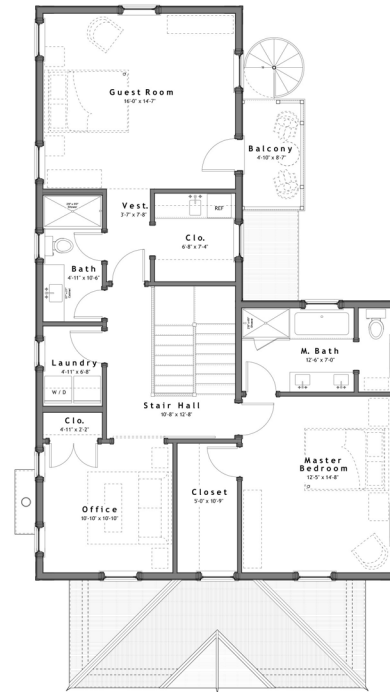
Total Area (Conditioned): 2,212 s.f.
 Bedrooms: 3
 Bathrooms: 2 1/2
 Width (Overall): 30' - 2 1/2" (Including Siding/Trim)
 Width (Framing): 30' - 0"
 Depth (Overall): 55' - 10" (Including Front Porch)
 Depth (Framing): 47' - 6" (Excluding Front Porch)

FEATURES :

- o 10'-0" Ceilings on Main Level, 9'-0" Ceilings on Upper Level
- o Open Main Level Floor Plan
- o Compact, Efficient Floor Plan
- o Light Filled Narrow Plan
- o Large Front Porch
- o Laundry Room Accessible to Bedrooms
- o Guest Room w/ Private Balcony and Optional Spiral Staircase



Main Level
1,106 s.f.



Upper Level
1,106 s.f.

Design modifications and/or alternate elevations may be required if building within the South Main Neighborhood. All dimensions are approximate. The final set of construction documents may vary or include minor modifications.