

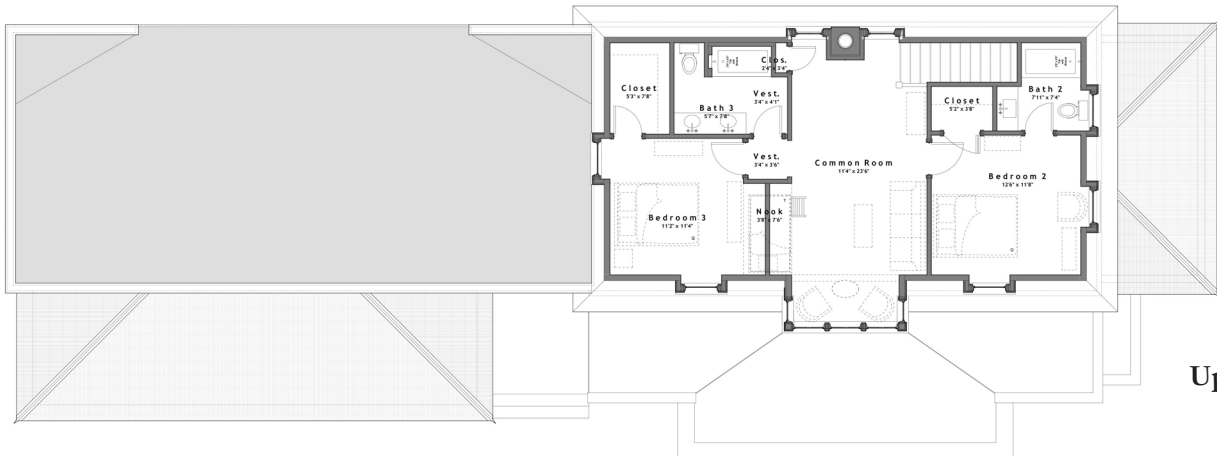


**SUMMARY :**

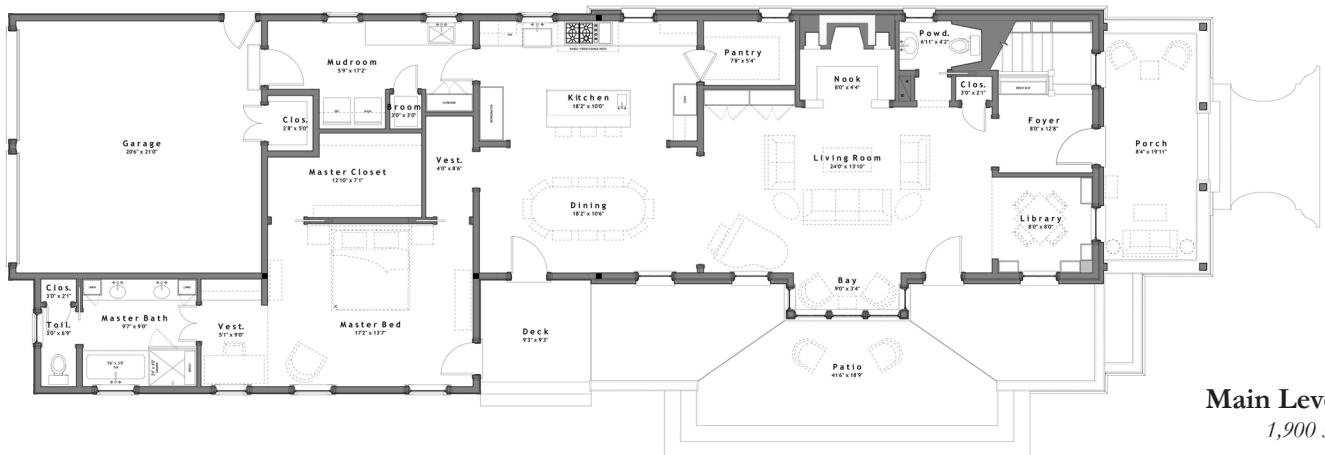
Total Area (Conditioned): 2,775 s.f.  
 Bedrooms: 3  
 Bathrooms: 3 1/2  
 Width (Overall): 34' - 6 1/2" (Including Porch)  
 Width (Framing): 31' - 4 1/2"  
 Depth (Overall): 99' - 10" (Including Porch)  
 Depth (Framing): 90' - 7 1/2"

**FEATURES :**

- o 10'-0" Ceilings on Main Level, 9'-0" Ceilings on Upper Level
- o Open Main Level Floor Plan w/ Fireplace Nook
- o Light Filled, Efficient Floor Plan
- o Large Front & Optional Side Patio
- o Bonus Common Room and Office/Library
- o Rear Access Two Vehicle Garage
- o Large Laundry/Mud Room Accessible to Master Bedroom



Upper Level  
875 s.f.



Main Level  
1,900 s.f.

*Design modifications and/or alternate elevations may be required if building within the South Main Neighborhood. All dimensions are approximate. The final set of construction documents may vary or include minor modifications.*

**CRAFT DESIGN STUDIO**  
 14312 HOLLY SPRINGS DRIVE, HUNTERVILLE, NC 28078  
 704.408.5501 TEL • WWW.CRAFTDESIGN-STUDIO.COM

**CDS - 2775**  
 PRICE CODE: A6