

---

●  
**TOUCHSTONE**GALLERY

FOR IMMEDIATE RELEASE

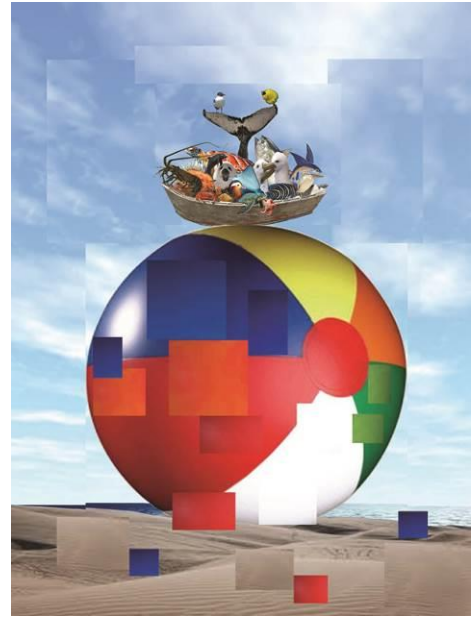
Preview: April 2-3, 11am - 6pm  
April 4 - April 27, 2014

## Earth Blankets by Rosemary Lockett

**Opening Reception: Friday, April 4, 6-8:30pm**

**Closing Reception: Friday, April 25, 6-8:30pm**

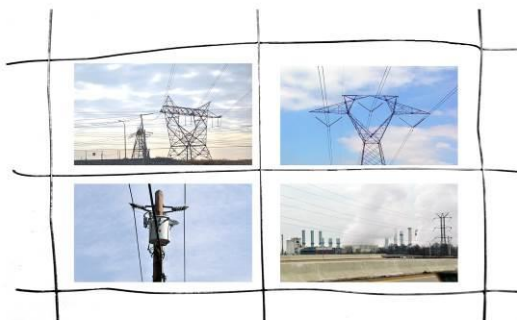
Rosemary Lockett juxtaposes photographs and cloth in her solo show "Earth Blankets," a lively interplay between 2-D and low-relief 3-D expression. Continuing with themes from her recent Altered Terrain collage drawings, Lockett makes connections between what she sees happening to the earth and human activity that spawns those changes. Her works hint at the invisible parts of the visible; that which is hidden behind, hidden inside, or hidden between visible things. Her blankets hide and reveal at the same time.



In some of Lockett's blankets, photos and poetry are printed on cloth or pocketed within cloth pieces sewn together. Fading detritus, shadowed by dried grass and holding condensed water droplets, seems beautiful in the photos but not so much in reality. The plastic trash she pictures is not decomposing, but forming a cumulative blanket upon the land. Some images are straightforward composites of concrete and asphalt, while others, prompted by Arthur Tress's Fish Tank Sonata series, reveal a pairing of industrial blankets, plastic toys, and harvested trees with animal and plant arks.



The fun for Lockett is in combining images and revealing the visible or invisible inks between the parts of each composition. This foray into collage photos and a strong concern for the environment pair up with a personality characterized by a questioning bent and a sense of humor to form these surreal landscape blankets: stories of the American landscape and our interactions with it.



Lockett's work commemorates Earth Day month, a time to remember our connection to the Earth and our dependence on it. She has soloed several times at Touchstone Gallery and other galleries in the region. Lockett teaches collage and sculpture from scrap at the Art League School in Alexandria.

*Images: Beach Blanket, Electric Blanker Detail.*

For more information contact Ksenia Grishkova, Director, 202.347.2787  
or email [info@touchstonegallery.com](mailto:info@touchstonegallery.com)  
Touchstone Gallery is open Wednesday through Friday 11-6 and  
Saturday- Sunday from 12-5.

901 New York Avenue, NW Washington, DC 20001 202 347 2787 fax 202 347 3339

[www.touchstonegallery.com](http://www.touchstonegallery.com) ● [info@touchstonegallery.com](mailto:info@touchstonegallery.com)

SINCE 1976