


TOUCHSTONEGALLERY

FOR IMMEDIATE RELEASE

"Seen/Unseen" Solo Exhibition

Rosemary Lockett

monotypes & sculpture

Preview - September 5 and 6, 11am - 6pm

Opening Reception - September 7, 6-8:30 pm

Third Thursday Wine Tasting - September 20, 6-8:30pm



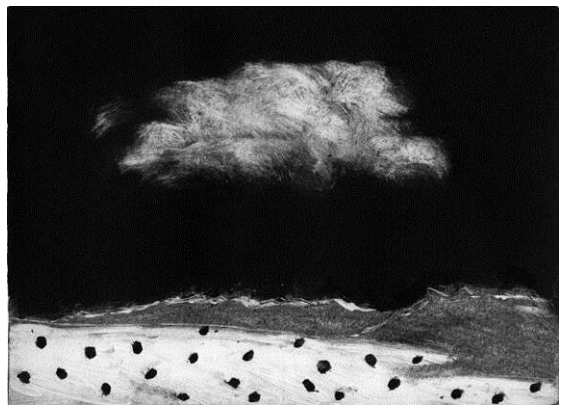
Selections from a series of 100 monotypes and sculptural works comprise Lockett's solo exhibition. Each represents, in some way, the terrain through which she traveled on several road trips through several states. In the studio, while experimenting with rich black ink rolled onto a plate and printed on BFK Reeves paper, Lockett tried to capture the essence of each place. Only tiny sketches sparked her memory and led the way to these singular originals. Wood sculptures amplify both textures and forms found in the monotype landscapes.



Like Magritte, who paints "the apparent visible and the hidden visible-- which, in nature are never separated," Lockett's work points to the invisible hiding within the visible landscape. The fun in looking at these works is to discover both. At first a rounded hill may seem a straightforward familiar form, but subtleties generated by ink absorption into the paper suggests other connotations. If observed closely, a dark hill interacting with mist or sky hints at ephemeral otherworld moments experienced in early morning or evening light. Seemingly simple swaths of sagebrush allude to the hidden grouse, hot dry winds, or ancient Native American medicine. Accompanying poetry points to these suggested scenes, which Lockett refers to as "the perpetual radiance of the world." Some works encompass three dimensional space, while others deny it, are more abstract, and focus on texture and rich shades of black within landscape forms.

Lockett is also inspired by writer Stephanie Kaza: "I stand in the wind on the edge of the rock...I am the sky, I am the rock, I am the pine. The wind is in me, in my breath; the stone is in me, in my body; the tree is in me, in my mind." Lockett's works are subtle reminders that all living creatures are composed of the amazing natural world we live in, that very island upon which we rely and thrive.

Lockett, who teaches at the Art League School in Alexandria, has thirty-two years of studio experience in painting, collage, and sculpting. She studied with Jennie Lea Knight, Anne Truitt, Tom Kerrigan, Hank Harmon and others. Works from her other series have been shown widely in the DC metropolitan area, and nationally. She is represented by Touchstone Gallery.



Images: "White Tree Line", "Conifer Hill III" and "Sagebrush & Cloud II" by Rosemary Lockett
For more information please contact Ksenia Grishkova, Director, at 202-347-2787 or e-mail info@touchstonegallery.com

901 New York Avenue, NW Washington, DC 20001 202 347 2787 fax 202 347 3339

www.touchstonegallery.com ● info@touchstonegallery.com

SINCE 1976