

SUNDAY,
June 18, 2017
GREENFIELD, MA

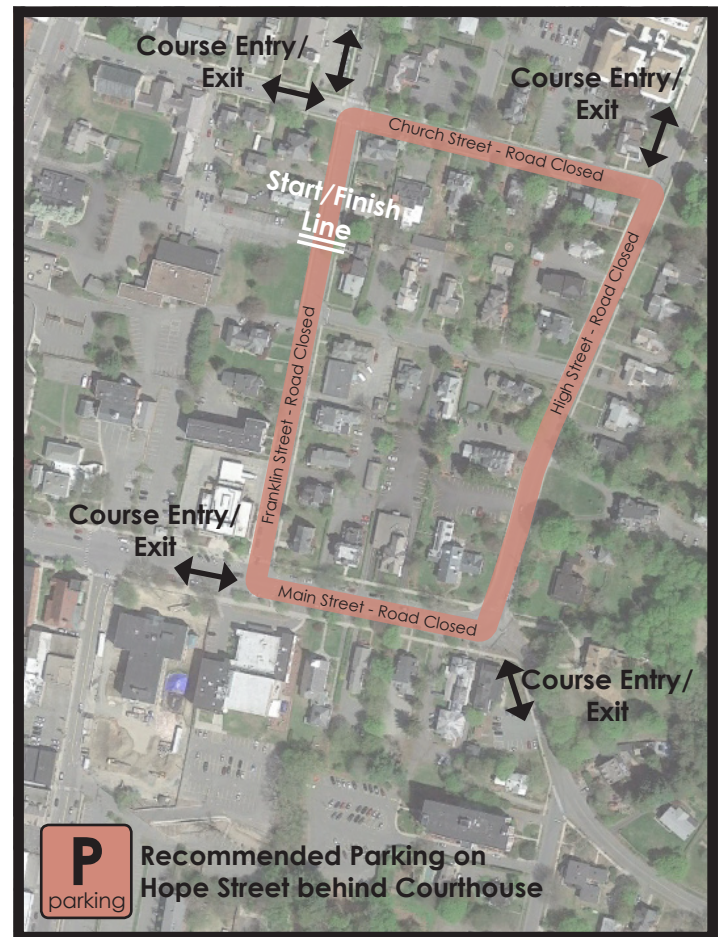
PROCEEDS TO
BENEFIT GREENFIELD
RECREATION
DEPARTMENT



Dear Greenfield Resident,
You are receiving this letter to inform you of a competitive bicycle racing event taking place on **Sunday, June 18th, 2017** in your neighborhood. The event is a collaboration between the Greenfield Recreation Department and a Boston-based cycling club, B2C2. Following a successful first year in 2016, we are excited to return to Greenfield for the second edition of the race this June.

In order to run this event safely for event participants and the community, **several streets will be closed from 8AM until 4PM on June 18th**. If you live on the course, getting in and out of your driveway on June 18th will be a little more complicated than usual. The Greenfield Recreation Department and B2C2 are committed to minimizing any headache this may cause. Outlined below are several ways to work around the street closures:

- Park off-course in the morning on June 18th to avoid the race altogether. The municipal lot behind the Courthouse is recommended. Municipal parking is free on Sundays.
 - If you need to leave your home by car on race day, please drive to the end of your driveway and wait for the race to pass. There will be a motorcycle referee at the back of the race who will escort you to a course exit.
 - If you need to drive onto the course to get to your home, drive to the closest corner and wait for instruction from a course marshal. A motorcycle referee will escort you to your destination.
 - Need help on race day? Race staff will be stationed at every corner on course to assist you.
- If you need immediate assistance, please call (617)678-2966 to speak to the Race Director.



The Greenfield Recreation Department and B2C2 greatly appreciate your cooperation. If you have questions, please email us at backbaycyclingclub@gmail.com, or get in touch with Christy Moore, Director of the Greenfield Recreation Department, at (413) 772-1553.

Thank you!
B2C2 and the Greenfield Recreation Department

