

# Changing the Way You Think of **MISSION CRITICAL** ELECTRICAL DISTRIBUTION



# STARLINE

TRACK BUSWAY

A DIVISION OF UNIVERSAL ELECTRIC CORPORATION

# Changing the Way You Think of **MISSION CRITICAL**...

## Increasing Power & Cooling Requirements Made Easy

Ever-increasing transistor densities and higher speed clocks are causing an increase in kW power density and resulting increased cooling requirements in today's modern data center. For every kW increase in power an equal amount of cooling capacity is required. This never-ending cycle of increasing power and cooling requirements translates into more and larger cables under the floor and robbing valuable cooling space. These power and thermal issues have caused the data center design community to change the basic data center design, either by eliminating costly raised flooring all together or at the very least, making the raised floor space a more effective cooling plenum.

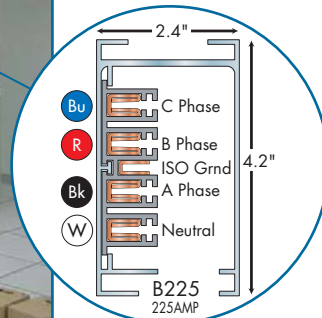
*The STARLINE approach is to locate the entire aesthetically pleasing electrical distribution system overhead for easy accessibility. STARLINE Track Busway is the modular, build-as-you-need, overhead, high-density electrical distribution system designed to meet and exceed the rigorous reliability demands and thermal requirements of mission critical facilities. STARLINE eliminates all the distribution panels associated with traditional systems. Changes and additions can be easily made without shutting off power to other racks or cabinets, opening any remote distribution panels or disturbing any cabinets to access floor panels.*

The simple turn-n-lock connection at the heart of the system has transformed the design and lowered the costs of maintaining and upgrading today's mission critical data center. Plug-in units located anywhere along the full access Busway can include almost any NEMA configuration in the form of receptacles or drop cords all protected with either fuses or circuit breakers at each location.



STARLINE puts a full access track busway overhead for a clean appearance, dramatically improved accessibility, and much less risk of human error during changeover or addition.

4 copper conductor, 3-circuit Starline Track Busway is available with 100, 160 or 225Amp busbars, 200% Neutral and Isolated Ground.

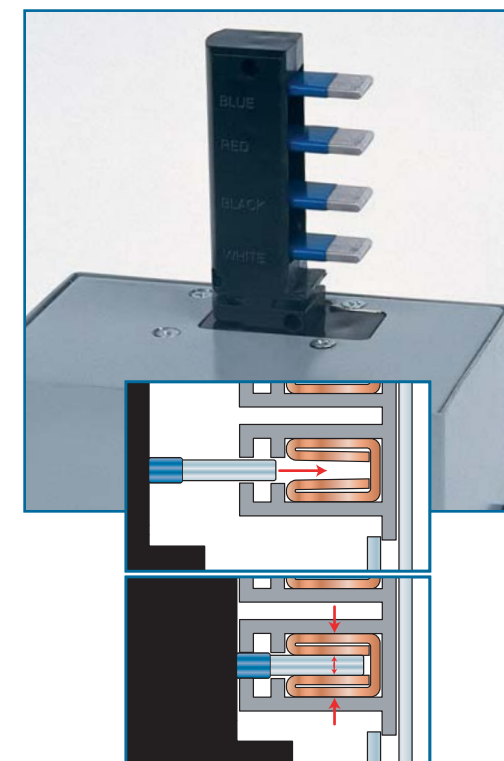


## Reliability: Critical to Your Mission Performance

*Continuous up time of electrical power distribution systems is absolutely crucial for mission critical operations. The unquestionable reliability of STARLINE Track Busway is the result of the unique, turn-n-lock "compression-fit" connection method used in all system electrical connections at individual modular plug-in's or between housing sections.*

Insert the turn-n-lock plug head into the continuous access slot ANYWHERE along the Busway run and rotate the plug 90 degrees. The stabs make a compression-fit into the channel-shaped busbars and result in a constant, reliable connection. This method maintains constant spring-pressure between the connection surfaces – no matter what the electrical load.

This feature eliminates power interruptions caused by overheated or loose connection, or the need for periodic re-tightening that is recommended with traditional busbar systems. Once the plug-in unit is turned into the connection position, it can be secured or locked into place, reducing the risk of accidental power disruption.



Plug-in units can be configured for hundreds of data center applications, including:

- Hard wire from plug-in to server rack
- Horizontal and vertical single and 3-pole circuit breaker with drop cord to each server rack
- Fused plug-in with drop cord to each server rack
- Fused plug-in with LCD indicator and power drop to each server rack
- Fused plug-in TwistLock drop to each server rack
- Circuit Breaker with individual power monitoring and drop to each server rack

### Plug-In Units Lock Into Place

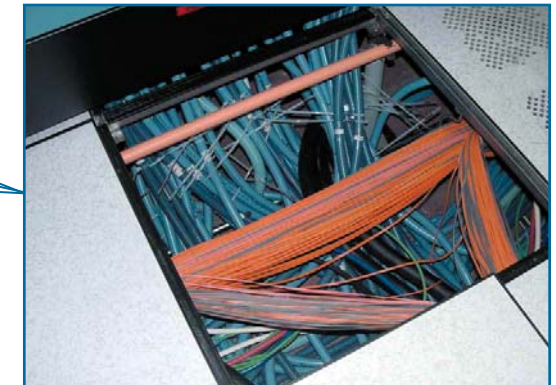
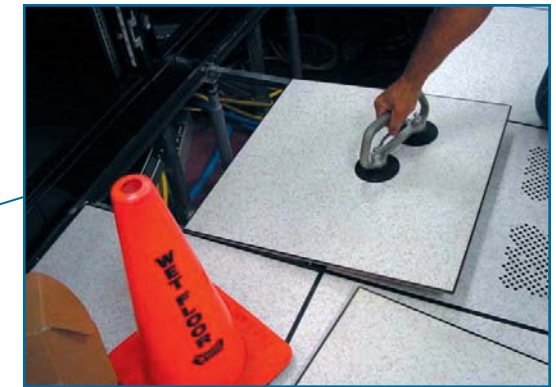
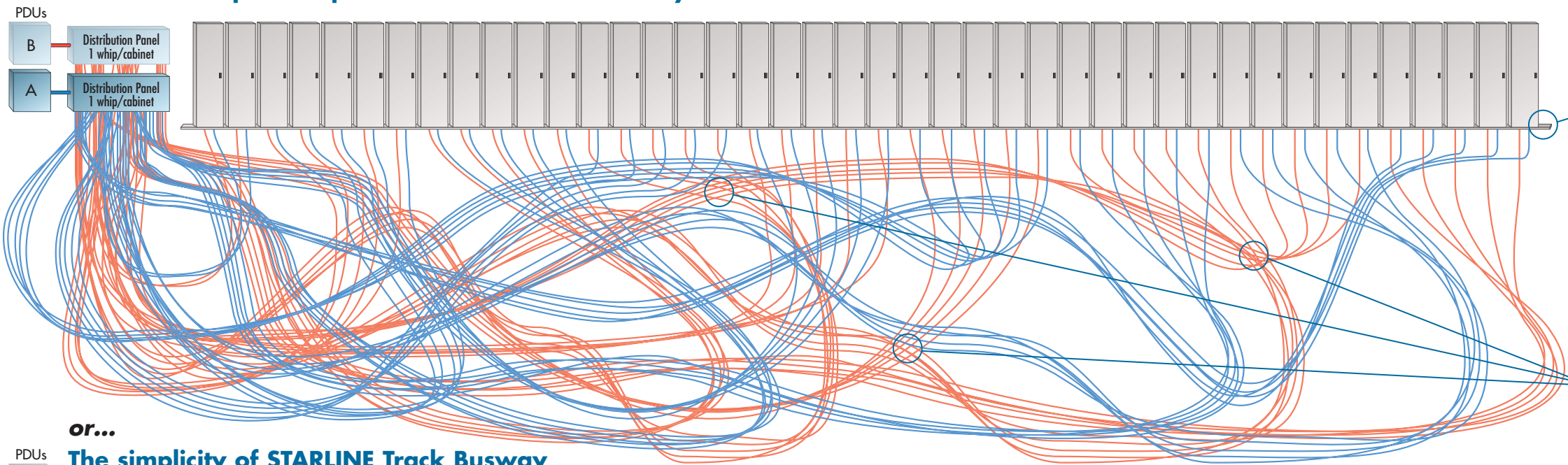
Key to the reliability and maintenance free benefit of Starline is its patented electrical connection design of the plug-in unit ("residual" mechanical spring pressure connection principal). With the male connector stab fully inserted into the mating conductor, constant mechanical pressure is being applied at the connection point.



# of MISSION CRITICAL ELECTRICAL DISTRIBUTION...

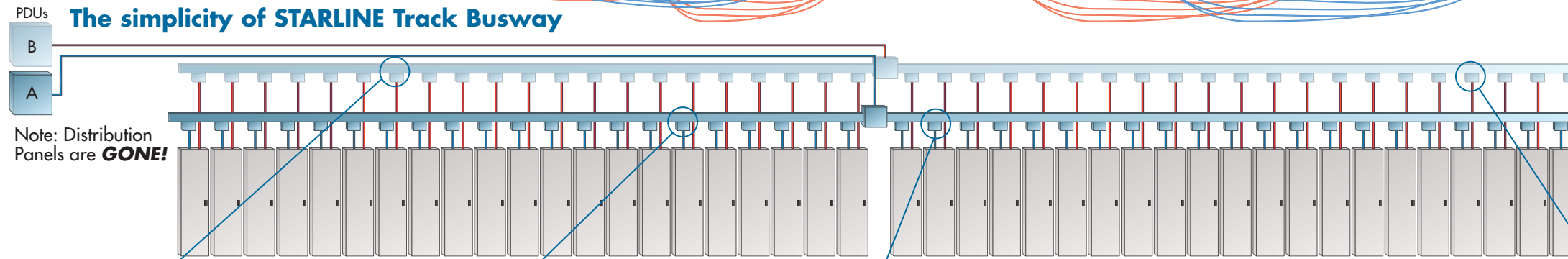


## The choice is quite simple...Traditional 42 cabinet system with dual runs



A "jungle" of cables on top of cables running in every direction. Difficult to locate, expensive to move or relocate often with power interruptions AND takes up valuable cooling air space!

## or... The simplicity of STARLINE Track Busway



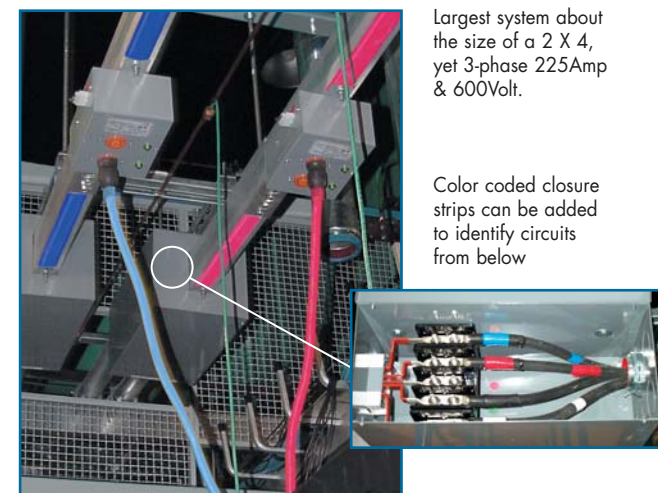
Each power module is circuit protected with fuses or circuit breakers right at point-of-use.



Circuit protected power modules can be supplied with multiple NEMA outlet devices, drop cords or hard wired to each cabinet as needed.



A wide variety of plug-in modules to meet individual specific customer needs.



Largest system about the size of a 2 X 4, yet 3-phase 225Amp & 600Volt.

Color coded closure strips can be added to identify circuits from below



STARLINE Plug-In modules can be relocated in a matter of seconds without power interruption. Simply insert and rotate 90 degrees. AND, you can choose to supply power drops to TWO cabinets from a single plug-in unit!



# Changing the Way You Think of **MISSION CRITICAL** ELECTRICAL DISTRIBUTION...



## **STARLINE Eliminates Human Error**

Most mission critical facilities report the bulk of power interruptions are caused by human error. STARLINE Track Busway eliminates the power interruptions caused by human error in conventional systems by eliminating the need to gain access to cables under raised floors, open or enter any power distribution unit (PDU), or any other distribution panel during a relocation or add-on condition.

This unique maintenance-free electrical distribution system provides fast, easy access to compact three-phase power instantly anywhere you need it along a continuously accessible Busway. Simple insert and rotate one of the many types of available plug-in units. Adding a circuit does not require any power shut down, so your system never has to go off-line. STARLINE'S modular build-as-you need design provides the freedom to improve power distribution density and bring individual server rack circuit protection as close to the point of use as possible, while simultaneously reducing costs.

## **Scalability and Flexibility**

The modular STARLINE Track Busway is an investment that dramatically improves your ability to meet user demands to expand, reconfigure or relocate operations elsewhere. Improved construction cash flow can be a direct result of this inherent design flexibility. The initial phase of a mission critical data center need only include the STARLINE Power Feed units. Then, because STARLINE installs so rapidly, Busway sections and plug-in units can be added in a matter of minutes as needed. As a result, you never need to tie up valuable capital until expansions in the electrical distribution system are absolutely needed.

***STARLINE Track Busway is rapidly becoming the benchmark for mission critical power distribution.***

- 40 to 225 Amp
- Single & 3-Phase
- 600 Volt rated
- Lightweight Aluminum Housing
- Double Neutral & Isolated Ground
- Many NEMA receptacle configurations

**STARLINE**  
TRACK BUSWAY  
A DIVISION OF UNIVERSAL ELECTRIC CORPORATION

**UNIVERSAL**  
ELECTRIC CORPORATION

3089 Washington Pike • Bridgeville, PA 15017 USA  
phone: 800-333-3490 or 412-221-4400  
fax: 412-221-6828

Learn more about how STARLINE can help you change your mind about power distribution for mission critical applications. Call us toll free at **800-245-6378**, e-mail us at **info@uecorp.com** or visit our Web site at **uecorp.com**

