

203-205 CANAL STREET



NWC OF MULBERRY STREET
NEW YORK, NY 10013

203-205 CANAL STREET

NWC OF MULBERRY STREET
NEW YORK, NY 10013

SIZE:

Ground Floor +/- : 2,700 SF

Basement +/- : 767 SF

CEILING:

12' High

FRONTAGE:

Approx 100' Wraparound

POSSESSION:

Immediate

ASKING RENTS:

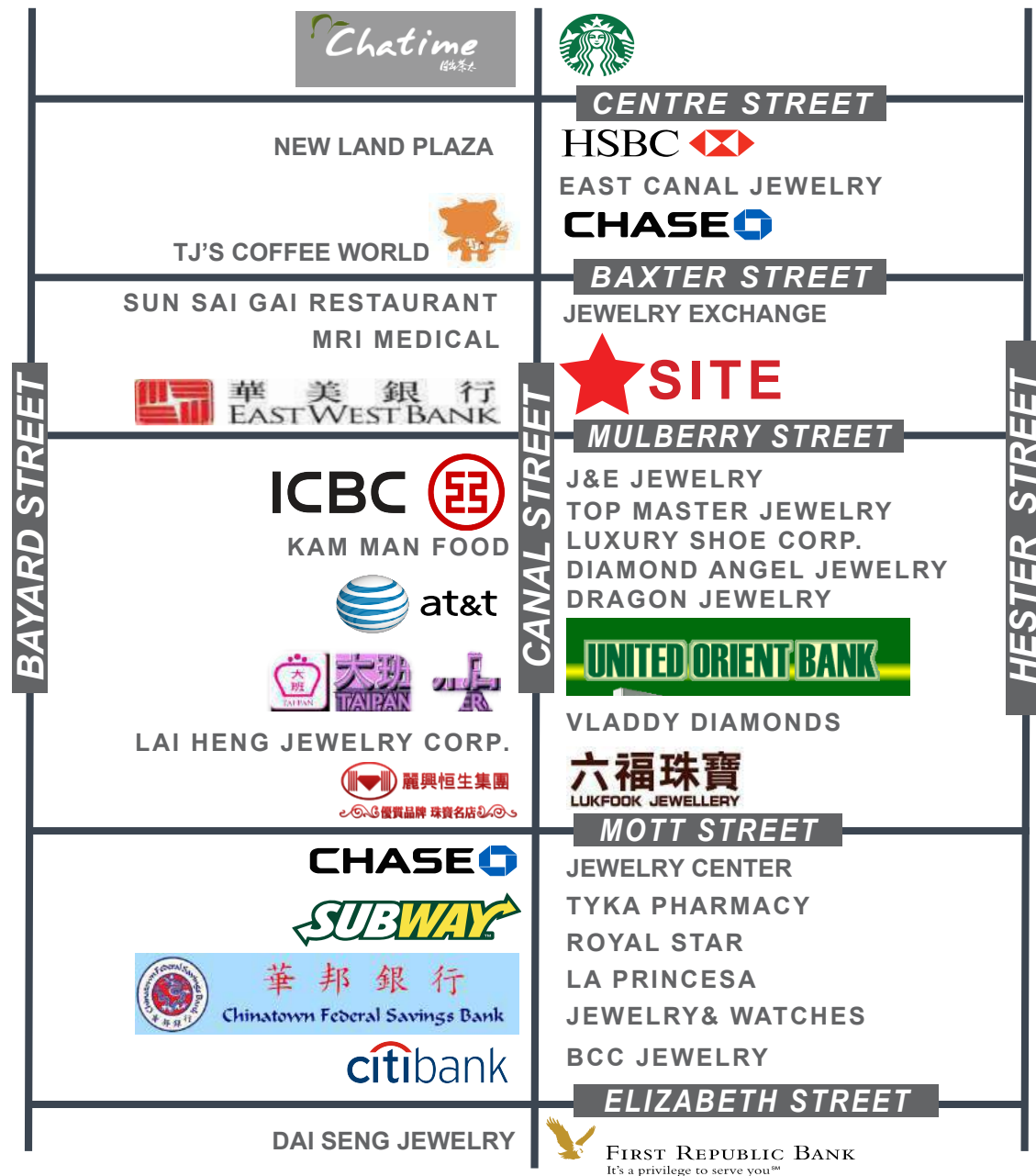
Available upon request

DESCRIPTION:

Located in the heart of Chinatown, at the gateway to Little Italy, this high visibility corner property offers users the opportunity to occupy space in one of the most active retail neighborhoods in Manhattan. This high traffic, high profile building hasn't been available in over 40 years.

NEIGHBORING RETAILERS:

Bank of America, Verizon Wireless, Sleepy's, Burger King, McDonald's, AT&T, TD Bank, Starbucks, HSBC, Chase, TJ's Coffee, East West Bank, Subway, Citibank, First Republic Bank



JOSEPH ISA
212.689.1645
joseph.isa@isarealtygroup.com

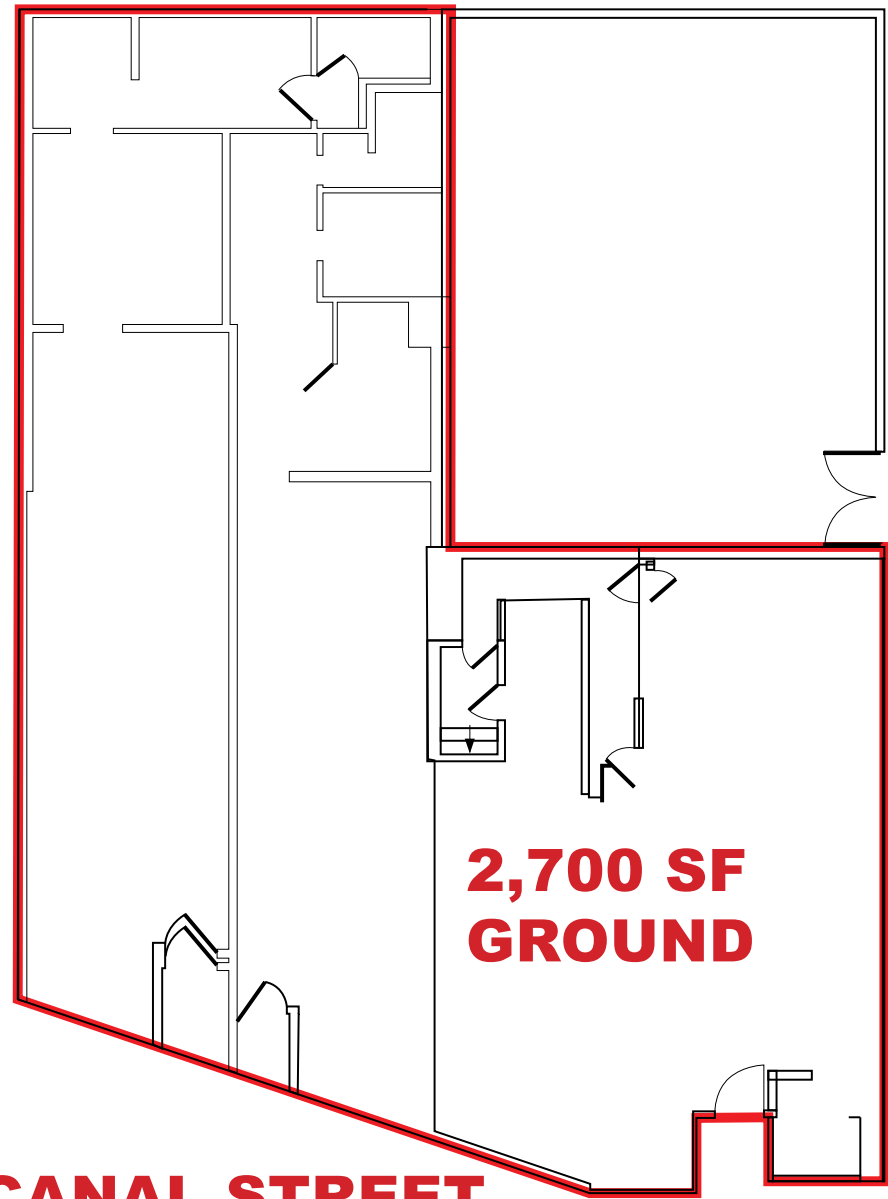
LOUIS FRANCO
212.689.1646
louis.franco@isarealtygroup.com

ISA REALTY GROUP, LLC - 20 WEST 20TH STREET, SUITE 403, NEW YORK, NY 10011 - 212.689.0099

This Information Contained Herein Was Obtained From Sources Deemed To Be Reliable. However Isa Realty Group, LLC Makes No Guarantees, Warranties, Or Representations As To The Completeness Or Accuracy Thereof

203-205 CANAL STREET

NWC OF MULBERRY STREET
NEW YORK, NY 10013



MULBERRY STREET

CANAL STREET



JOSEPH ISA
212.689.1645
joseph.isa@isarealtygroup.com

LOUIS FRANCO
212.689.1646
louis.franco@isarealtygroup.com