

OFFICIAL CLUB BROCHURE

—
2021-2022

Haynes Robinson

Lawyers EST 1889



FOR ALL THAT
LIFE BRINGS

Our experienced and skilled lawyers provide Australian best practice legal services to clients in Albany, Perth and Great Southern Region.

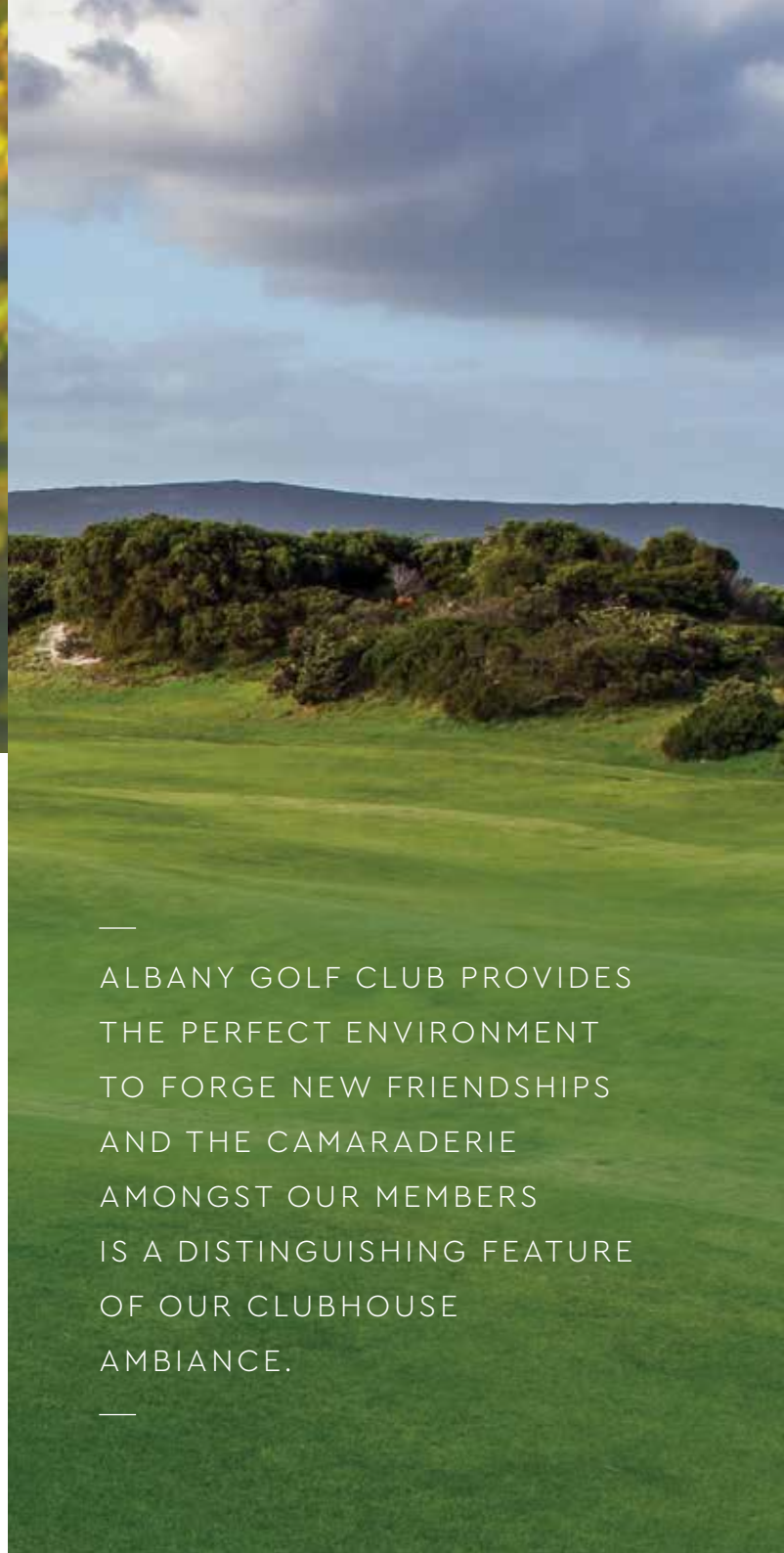
Our Principal, Jamie Hodgkinson, is a proud member and sponsor of the Albany Golf Club.

We invite you to engage us to help you with all that life brings, through our experience, depth and integrity.



P. 9841 1122
A. 61 Duke Street, Albany
E. jamie@haynesrobinson.com.au
www.haynesrobinson.com.au

Wills, Estate Planning & Probate
Family Law
Commercial & Corporate Law
Property Law
Conveyancing
Litigation
Employment Law
Planning Law
Alternative Dispute Resolution
Personal & Corporate Insolvency
Criminal Law
Personal Injury & Worker's Compensation
Debt Collection



—
ALBANY GOLF CLUB PROVIDES
THE PERFECT ENVIRONMENT
TO FORGE NEW FRIENDSHIPS
AND THE CAMARADERIE
AMONGST OUR MEMBERS
IS A DISTINGUISHING FEATURE
OF OUR CLUBHOUSE
—
AMBIANCE.

CONTENTS

Welcome	5
A Brief History.....	7
The Course	9
Course Tour.....	13
Golf Shop	19
Coaching and Game Improvement	21
Becoming a Member.....	24
Benefits of Membership	29
Members' Golf	31
Major Golf Events.....	33
Reciprocal Golf	35
Juniors.....	37
Visitors.....	41
Play and Stay	45
Clubhouse	47
Functions and Special Occasions.....	51
Corporate Golf Days	55
How to Find Us	59



PREMIER PUBLISHING
Level 10, 555 Lonsdale St
Melbourne VIC 3000
T 03 9521 7994
E info@premierpublishing.com.au
W www.premierpublishing.com.au

Albany Golf Club and Premier wish to thank the advertisers who appear in this publication for their support and wish them every business success. The contents of this brochure are believed to be correct at the time of printing, nevertheless, we cannot endorse and readers should not rely solely upon the accuracy of any statements or claims contained herein without prior consultation with the service provider. | Photography by: Albany Golf Club



Aberdeen Dental Centre was established in 1985, since then it has become one of the premier dental centres in the Great Southern.

From the moment you walk in, we endeavor to provide you with a relaxed, comfortable and friendly environment. Our highly skilled staff specialise in the latest in dental care technology to ensure an efficient and careful treatment.

Dr Nish Bhargava | Dr Rohini Somula | Dr VJ Chandrahmohan

Mon - Fri 8am-5pm, After hours appointments available on a needs basis

A 1/60 Aberdeen Street, Albany WA, 6330 | E reception@aberdeendental.com.au

P 08 9842 2345 | www.aberdeendental.com.au

We accept all health funds. Extra benefits when using these preferred providers:

HICAPS same-day claim for all health funds.



Aberdeen Dental Centre

WELCOME TO

ALBANY GOLF CLUB

Albany Golf Club is an historic Club located just five minutes from the heart of the city, on the pristine south coast of WA. We are approximately 4.5hrs by car from Perth, or 1 hour by plane.

We are proud to be the oldest Club in Western Australia still playing golf on its original site. The Club is blessed with a wonderful 18-hole championship links-style course that is Heritage-listed and ranked among the top 100 in the country.

As well as offering a full golfing calendar for our members, the Club hosts a number of important and prestigious events each year, including the 10-day Wittenoom Cup Carnival in late January.

Albany Golf Club has various practice facilities including a full-length driving range, chipping and putting greens and a practice bunker. Our golf teachers offering expert coaching and a fully-stocked Golf Shop complete an exceptional all-round golfing experience.

At the heart of the community, we are a family-friendly Club that takes pride in the development of junior golfers, and have various programs to suit all ages.

The modern and stylish clubhouse offers a home away from home off the course to our friendly and thriving membership and makes a wonderful venue for wedding receptions, other special occasions and corporate meetings.

Albany Golf Club provides the perfect environment to forge new friendships and the camaraderie amongst our members is a distinguishing feature of our clubhouse ambiance.

If you are looking to play good golf in good company, or for somewhere to have a corporate golf day, celebrate a special occasion or just have a great day with your friends, then we invite you to join in and become involved. A warm welcome is assured.



Your Local Mortgage Broker Albany & Great Southern.

A Mortgage Broker can help you find the most appropriate loan to suit your unique needs and circumstances. First Homebuyer, Renovator, Business Loans, Investment Loan or wanting to Refinance to a better rate, we're here to help

We'll help navigate you through the competitive and ever-changing mortgage landscape to find the right loan for you. We'll go into bat and negotiate on your behalf, and we'll make the process as simple as possible for you, geared up to deliver fast results.

Amber Nathan Call 0427 262 375

E amber@harkenfinance.com

"Amber helped us through the whole process financing our home purchase, making it easy by keeping us informed all the way..."



www.ambernathan.com.au

Authorised Credit Representative 510487



A BRIEF HISTORY



Albany Golf Club can trace its history right back to 1898, when it was first established with nine holes.

An English golfer visiting Albany suggested the land at Middleton Beach, beside Lake Seppings, was ideal for a nine-hole "links" course, as the best golf courses were those on traditional links on seaside land.

Prominent local citizens, including the editor of the local newspaper, thought this was an excellent idea, and formed a committee to establish a golf club. It was believed such a venture would attract even more visitors to an area that was already growing rapidly because of the gold boom. Initially, players only practised on the layout, with the official opening taking place in 1900. The first clubhouse (or, to be more accurate, Club Shed) was erected that same year.

Sponsorship from local business helped establish prestigious competitions, such as the Wittenoom Cup, which continue to this day.

The popularity of the course was such that it soon became clear that an 18-hole layout was not only desirable, but a necessity. But the Great Depression and World War Two intervened and it was not until 1963 that this dream became a reality.

Much investment has been made in the Club and its course in the intervening period, most notably in erecting a magnificent new clubhouse in 2000 that required the re-numbering of all holes and reversing the two nines.

The course's significance was recognised when it became Heritage-listed in 2010. Times have certainly changed, but the Club and its members have endured, driven by their own love of the course and their desire to preserve it for future generations to enjoy.

April 28th 2016 saw the celebration of 100 years of women's golf at the Albany Golf Club.

With a wealth of knowledge and expertise in the areas of fitness and medicine, the highly qualified and friendly team at South Coast Sports Medicine are here to provide treatment or help you achieve your optimal health.

With Sports Doctors, Physiotherapists, Exercise Physiologists, an Integrative Medical Practitioner and a Naturopath, the team are well equipped with the knowledge, skills and experience to safely assess individual's unique needs.

We aim to give clients the skills to become independent in using exercise to manage their conditions and lifestyle for work and home.

Occupational Medicine | Pre-Employments

Workers Compensation | Spirometry | Corporate Health



THE COURSE

Albany Golf Course was one of the earliest golf courses established in Western Australia and the first links-style course. It has been favourably compared to the best of the traditional links courses in Scotland and is the oldest established course at the same location in the State.

Originally a nine-hole design, it was extended to 18 holes in the 1960s. The par-72 layout features two par-3s and two par-5s on both nines and stretches to 6,068 metres off the blue championship tees. Women enjoy a no-less invigorating 5,289-metre challenge from the red tees.

While the course is not overly long and there are some drivable par-4s (depending on which way the wind happens to be blowing!) and some par-5s reachable in two, that doesn't make it easy. Payback comes the nearer the green you get because it's not just the repetitive test you find on so many courses of hit the middle of the green, two-putt and move on.

You may have to contend with an uneven lie when hitting your approach, or perhaps your ball has found its way into the rough. What is certain is that there will be many factors to consider.

Rather than being mundane, Albany offers something out of the ordinary, but in a good way. It rewards those with skill and imagination and calls on the golfer to use their full repertoire of shots. Here you have to factor in the slopes and hit a particular side of the flag, or find yourself left with some difficult putts. It's exactly the same just off the green, with a variety of tests being posed and choices offered.



Motel Le Grande, just 5 minutes from the city centre offers you superb, attractively priced accommodation in Albany.

Spacious guest rooms boast the versatility to accommodate couples, families in one or two bedroom units or self-contained apartment. Whether travelling solo or holidaying with the family, our well-appointed room configurations will accommodate all of your needs.



Accommodation and licensed Restaurant

Superb a la carte restaurant OPEN TO PUBLIC 6pm daily Special occasions & group bookings welcome

Well appointed accommodation single and family style | Wheel chair access | Ground Floor

Just 10 minutes from city centre and Albany airport

Motel Le Grande, 479 Albany Highway, Albany, Western Australia 6330

T 08 9841 3600 | F 08 9841 5755 | www.legrande.com.au



We are immensely proud of our course, and we are not alone. In March 2010, the course was placed on the State Register of Heritage Places which is managed by the Heritage Council of WA.

Craig Parry, a multiple winner on both the PGA and European Tours, has played golf all over Australia and all over the world. "Albany is my favourite Australian golf course," he says. "It's a great course by the ocean, which plays hard and is never the same."

Albany Golf Course attracts top golfers from around the country and overseas as well as nurturing some home-grown champions.

This challenging course has stood the test of time – well over 100 years in fact. Modern technology has yet to find a way to tame the links course where ability to control ball flight in the wind and a vivid imagination to vary trajectory and club selection depending on the prevailing conditions triumph over being able to hit it prodigious distances.

Proof of this can be seen in the Club record, which was set by West Australian champion golfer Graham Marsh with a seven-under-par round of 65. Incredibly, 2017 marked the 50th anniversary of his achievement.

Nestled aside the Lake Seppings wetland, Albany Golf Course provides a stunning lush green belt linked with both the coast and islands in Middleton Bay and is an important habitat for more than one hundred species of water and bush birds.

Even on days when the traditionally unpredictable links-style bounces are not being kind or the putts refuse to drop, there is the picturesque ocean coastline to savour and the Clubhouse welcome to look forward to.

Most of all, there is the desire to come back and do it all again. Because, as Craig Parry so rightly says, tomorrow's challenge will be something entirely new again.



Colette has a background in Interior Design & a wealth of knowledge in the local window furnishing industry.

Contact Colette to make an **OBLIGATION FREE CONSULTATION** in your own home.



RESIDENTIAL - New homes

Curtains and Sheers | Padded Pelmet & Swags & Tails | Rollers | Romans | Cellulars | Internal Shutters

COMMERCIAL – Hospitals | nursing homes | schools | offices | holiday accommodation



COURSE TOUR

We hope you enjoy your time with us at Albany Golf Club. Here are a few useful tips and course notes which should help you make the most of your round if you have never visited us before. Distances shown are from the men's Blue Tees.

Hole 1 (Whaleback) 355 metres, par 4

The large ridge in the middle of the fairway gives this hole its name. Unless the drive is perfectly down the middle, the ball has a very good chance of rolling off the whale's back to either side of the fairway into the rough. The green, which slopes away on the sides, is only visible from the tee and the men are forced to shoot through a narrow gap between Peppermint trees.

Hole 2 (Memorial Drive) 398 metres, par 4

One of the few true dog legs on the course and toughest hole on the card. The green is totally blind from the elevated tee due to an assortment of bushes and trees blocking the view of the fairway. The chosen line is towards the War Memorial on Mount Clarence in the distance where a good drive will allow a second shot into a long green ridged to the left and with many other subtle contours to contend with.

Established in 1954, *The Hub on York* is Albany's iconic and award winning, locally owned and run clothing store for men and women of all ages and style preferences.



10% OFF*
your full priced purchases.
Present your WA Seniors card
*excludes Homyped range



Offering personalised friendly service, The Hub is located in central York street in Albany and also has an online store, great for browsing ahead of visiting the store with Click and Collect option.

www.thehubalbany.com.au

Hosting in demand women's labels such as:

Yarra Trail | Jillian | Renoma | Corfu | Thomas Cook | Sportswave | Toorallie | Slade | Bridge & Lord.

Popular brands for men include:

Superdry | Perrone | Ben Sherman | Daniel Hechter | New England | Levis | Studio Italia | Breakaway.

The impressive variety of brands in store also include Australian made labels :

Jimmy Stuart | Formation Fashions | Ballarat Gold | Branberry | Buckle Accessories | Humphrey Law.

There is a broad range of products on offer across:

sleepwear | underwear | footwear | casual wear | business wear | formal wear
knitwear | accessories | gift wear

Afterpay, ZipPay and Humm are available both online and in-store.

Gift vouchers are available for purchase and use in-store.

P 08 9841 1880 | A 176 York Street, Albany



Hole 3 (Peppermint Hill) 292 metres, par 4

A dog leg to the right. In favourable conditions, a big hitter can reach the green but risks ending up in a very nasty traditional pot bunker added to the layout when the green was replaced in 2002. Stay left if possible, as going right will bring trouble.

Hole 4 (The Old Clubhouse) 496 metres, par 5

A good birdie opportunity for the player who is playing well. There is plenty of room for the big hitter from the elevated tee provided the ball does not stray right. The large green lies right in front of the old clubhouse site and is tended by bunkers on the front and rear left and the front right. Hole 5 (Links Road) 327 metres, par 4

Doesn't play as easy as the length would suggest. The fairway slopes from left to right meaning that a brave tee shot must be hit on a line left of centre which brings a steep fall away on the left side into play. The green slopes from back to front and is usually receptive to a well-struck approach shot.

Hole 6 (The Old Road) 171 metres, par 3

Replaced in 2002, this par 3 requires accuracy and thoughtful club selection. There is still the steep slope towards the road (which features on every hole on this side of the course) to contend with, along with two bunkers to the right of the green. Best results are obtained by aiming a little left.

Hole 7 (Seppings View) 343 metres, par 4

A generous fairway to shoot into with most balls ending up in the central valley leaving an elevated second shot to reach the green placed at the top of the next hill. Big hitters can shoot over the large pines to the left to avoid the valley, but risk a second shot from a strategically placed pot bunker behind. A deep drop-off to the right of the green and the threat of a trip down the hill to the road to the left necessitate an accurate second shot.



Hole 8 (Devil's Ridge) 134 metres, par 3

Although this par 3 does not look difficult from the tree-lined setting of the tee, the green is very exposed with sharp drop-offs to both the left and right requiring a player to be careful with club choice and direction.

Hole 9 (The Dam) 493 metres, par 5

Gets its name from the three-metre hollow in the already decidedly undulating fairway that often captures a player's second shot. Accuracy is again a requirement due to the ever-present drop-off to the road on the left and a well-vegetated right side of the fairway leading to a plateau green falling away to the right, left and rear.

Hole 10 (The Keyhole) 163 metres, par 3

Very testing to play on a day when the wind is strong as the tee shot is played down a long and narrow tunnel of trees and bush. The exposed green that slopes downwards at every point requires a delicate second shot if the first did not find the green.

Hole 11 (Thru the Gap) 472 metres, par 5

Toughest par 5 on the course due to the need for a very accurate drive to set up a reasonable second shot. Straying too far left or right spells big trouble. Playing to the right of the fairway to get a shot through the gap at the end of the driving area is preferable. One of the course's most feared holes even though there are no bunkers.

Hole 12 (Sea View) 342 metres, par 4

Probably the most picturesque outlook from a tee anywhere on the course, this looks easy but being entirely exposed to the wind off Middleton Beach can be very testing. Hitting to the left will put the ball out of bounds and a careful second shot is required as a mound in front of the green can dramatically deflect a player's ball.

Hole 13 (Breaksea) 400 metres, par 4

Longest par 4 on the course, this hole is a challenge for any player who is not a long hitter, especially if the wind is blowing, as the severely undulating fairway provides a challenging second shot to another plateau green that falls away to the rear.

Hole 14 (By the Pine) 126 metres, par 3

Club selection can vary greatly depending which way the wind is blowing on this exposed par 3 and is key to finding the putting surface. The two-tiered green is well bunkered.

Hole 15 (The Garden) 312 metres, par 4

This short par 4 provides the most open tee shot on the course. Local knowledge helps with the second shot as a misdirected hit to the mound on the right of the green has the ball heading off across to the left and down a two-metre drop.

Hole 16 (Woolybush) 496 metres, par 5

A great birdie chance exists as there is a generous driving area as long as the player keeps left through the narrow opening to the fairway. There is only one bunker to the right but shooting through the green will result in problems due to a three-metre drop at the back.

Hole 17 (The Gully) 358 metres, par 4

A relatively easy par 4 that demands a lofted second shot to avoid a hollow in front of the green that will prevent run if it is damp.

Hole 18 (Gun Barrel) 390 metres, par 4

Rated 3 on the card, the closing hole is tough due to the dense rough that lines the fairway all the way down to the green. An undulating fairway compounds an already challenging second shot due to the 40 metres of dead ground in front of the green that makes calculation of the distance difficult.



Solomons
Flooring

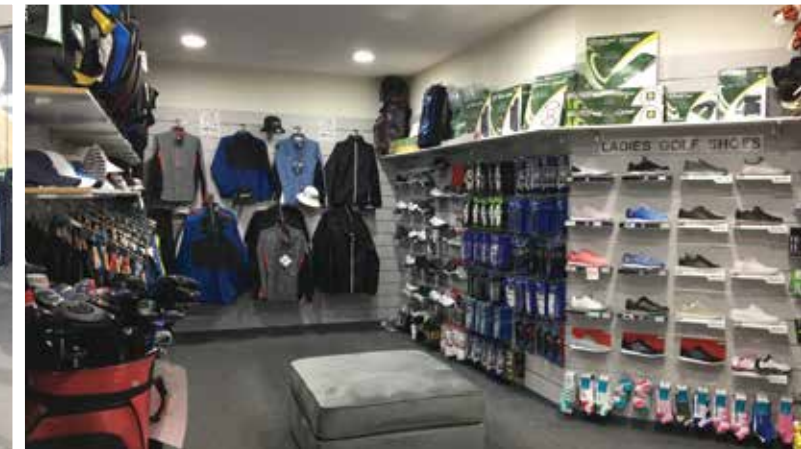


There's magic in a Solomons store!

CARPET | VINYL | VINYL PLANKS | HYBRIDS



Call Paul on **9841 1592**
for an obligation-free quote!
albany@solomons.com.au
104 Lockyer Avenue, Albany



GOLF SHOP

The dedicated team in the Golf Shop are on hand seven days a week to help golfers enjoy their game to the full.

With knowledgeable, friendly and helpful staff, members and guests are assured of receiving the highest level of professional advice to help them make informed decisions regarding purchases.

The Golf Shop specialises in custom fitting and with several fitting carts and systems at our disposal, golfers can be sure of receiving a made-to-measure set of clubs that is perfectly suited to their unique swing. Our staff are trained and passionate about club fitting and can explain the benefits it can have to your game.

The Golf Shop offers a wide range of products which include clubs, balls, clothing, shoes, gloves, pull buggies, bags and much more, in fact just about everything you would need to enjoy a day out on the course. A great range of men's and ladies' clothing is also in stock so you can look the part on the course.

Looking for that perfect present for a golfing friend or family member? You can't go wrong with a gift voucher, which can be used for lessons or merchandise.

Good quality sets of clubs are available for hire and there are carts and pull buggies available to hire for those wishing to save their energy for their golf.

Whatever your needs, the Golf Shop staff will be happy to help. Give them a call on (08) 9844 8433.



We are a family friendly practice delivering quality and honest service based on the needs of each individual.

Implant Surgery & Restoration | Dental Sleep Apnoea & Snoring Devices | Root Canal Treatments | Preventative Treatments | Dentures | OPG X-Rays
Same-Day Crowns, Bridges & Veneers | Fillings | Extractions | Mouth Guards
Occlusal Splints | Scale, Clean & Polish | Tooth Whitening

Dr Nish Bhargava | Dr Rohini Somula | Dr VJ Chandrahmohan

Mon - Fri 8am-5pm, After hours appointments available on a needs basis

A 1/60 Aberdeen Street, Albany WA, 6330 | E reception@aberdeendental.com.au

P 08 9842 2345 | www.aberdeendental.com.au

We accept all health funds. Extra benefits when using these preferred providers:

HICAPS same-day claim for all health funds.



Aberdeen Dental Centre



COACHING & GAME IMPROVEMENT

Albany Golf Club has a wonderful, highly-rated course. Wouldn't it be nice to have a golf game to match and to be able to enjoy this layout to the full?

Help is close at hand – simply book a lesson with Head Professional Michael Draper or Ian Redmond. Both are qualified golf teachers who can transform your game.

Michael has recently completed his 3year traineeship and been appointed as Head Professional. Along with being named WA PGA Trainee of the year in 2019 he has excelled with National recognition for his academic results over the 3 years of his traineeship.



Former Head Professional, Ian, is a AAA Member of the Australian PGA and available for coaching to all levels of golfers from beginners to professionals.

Whether your ambition is to become one of the all-time greats or shoot sub-100 for the first time, our teachers are here to help. Focus is given to the fundamentals, with clear communication and concise instruction and the relaxed atmosphere helping to achieve the desired results.

Great golf instruction is nothing without the practice facilities on hand to ingrain newly-learnt techniques so that they become second nature. As you might imagine, a championship-calibre facility like Albany has a range of areas to work on your golf game including a full-length driving range, chipping and putting greens and a practice bunker.

Book a lesson and start getting your game in shape by contacting the Golf Shop on (08) 9844 8433.



—
 WE OFFER LOCAL BUSINESSES VARIOUS CORPORATE PACKAGE AND MEMBERSHIP OPTIONS, TAILOR MADE TO SUIT EVERY BUDGET AND WELCOME ENQUIRIES TO OUR MARKETING AND SPONSORSHIP CHAIR.
 —

BECOMING A MEMBER

Albany Golf Club enjoys an enviable reputation as one of the premier golfing venues in Western Australia. Our Club has a large and loyal membership. Many have been members for over 30 years. It has a great course, excellent clubhouse facilities, very friendly staff and, perhaps most importantly of all, it values all its members.

Membership provides access to an outstanding array of facilities at your fingertips, with the crown jewel being the magnificent 18-hole golf course that has been enjoyed by many thousands of golfers over the past 100 years and more.

The picturesque, oceanside golf course is reason enough to join, but the friendly atmosphere in the clubhouse has to be experienced in person to truly be appreciated.

Play holes after work, have a drink or a casual meal in our wonderful clubhouse, lounge or Sprig Bar or just come and socialise with friends, or meet new ones. It sounds too good to be true, but it's a way of life to our members. You can smell our barista-made coffee the moment you walk into the lounge.

A large proportion of Albany's members play regularly and traditional seven-day memberships are by far the

most popular, giving full access to the magnificent golf course and a host of competitive playing opportunities. New members can join at any time and pay a pro-rata subscription in their first year.

Members can chart their continual improvement by gaining a Golf Australia handicap, recognised at golf clubs worldwide, and make their bookings either in person in the Golf Shop, by phone, or online through the MiClub booking system, which also allows you to track your handicap and see all your competition results.

If you love golf but enjoy the game on a more social level, then our Social Membership package is for you. Twilight Friday night social comps in season are perfect for Social and Social Plus members.

This membership offers full course playing rights outside of competition times for unlimited social golf. If you are a little more serious you can upgrade to our Social Plus 9 membership which allows you a GA handicap, unlimited 9-hole competitions and unlimited Sunday 18-hole competitions. These membership categories provide the best pathway to familiarize yourself with the club and course and meet likeminded fellow golfers.

Undecided? We would be very happy to answer your enquiries about membership and show you around our course, all you have to do is ask or email us.

Full details of all current fees and membership categories can be viewed on our website. Please contact Davida Carroll on (08) 9844 8855 for more information on what membership category suits your playing needs the best or e-mail: admin@albanygolfclub.com.au





Advanced Family & Sports
PODIATRY
 Committed to providing excellence in podiatric care

Podiatry Services for all Ages
 Footwear Assessment & Fitting
 Walking & Running Problems
 Post Operative Rehabilitation
 Leg & Foot Problems
 Ingrown Toenails
 Sporting Injuries
 Nail & Foot Care
 Fungal Toenails
 Forefoot Pain
 Knee Pain
 Heel Pain
 Diabetes

Keeping you on the course

Is pain in your feet, shins or knees slowing you down on the course?

Can you only walk a few holes before you need to take your shoes off?

If this is you, then come and talk with the lower limb experts who specialise in foot and lower limb problems to help you perform at your best.

With over 50 years of combined experience backed up by world class equipment, Advanced Family & Sports Podiatry is here to support you.



BENEFITS OF MEMBERSHIP

The ultimate way to enjoy the game of golf is to become a member of Albany Golf Club. Here are just a few reasons why choosing to join us could be the best decision you make all year.

Full Members enjoy:

- The prestige of being a member of the oldest Club in Western Australia still on its original site
- The opportunity to play a quality golf course rated in the top 100 best courses in Australia as often as your membership category allows
- Equal membership for Men & Women
- The use of a superb fully licensed clubhouse with stunning views of King George Sound only five minutes from the centre of Albany with ample parking
- Obtain an official handicap recognised throughout Australia and worldwide
- Friendly fellow members create a great clubhouse atmosphere
- Discounted Green Fees for guests
- Entry into weekly Club competitions and Honour Board events
- Enjoy reciprocal golf at over 20 other quality courses across Australia and New Zealand
- Use of excellent practice facilities including full driving range, substantial putting green and sand bunker area
- A variety of memberships available to suit all needs
- Discounted membership rates for young adult and junior golfers
- Fully-stocked Golf Shop with knowledgeable staff
- Highly-regarded PGA and Golf Australia-qualified golf teachers available for private tuition
- Frequent social golf where new members can easily join in
- Friendly and welcoming staff always happy to help



Advanced Family & Sports Podiatry
 37-39 Pioneer Road, Albany WA 6330 P (08) 9841 3633
 E info@advancedpodiatry.net.au | www.advancedpodiatry.net.au



MEMBERS' GOLF



Members at Albany Golf Club love their golf and can look forward to a full golfing calendar offering a great range of events throughout the season.

The Albany calendar features prestigious Honour Board events such as the Club Championship, which are even more special at a Club that boasts a history spanning three centuries.

There are also the traditional monthly medals or Stableford competitions that offer the chance to make many new friends.

Men and women enjoy their own designated competition days with reserved tee times and opportunities to play together in joint fields. Women also enjoy pennant play against other clubs.

There are many relaxed and fun competitions throughout the season, including charity days raising money for local good causes such as the Albany Hospice which reflect the

generous nature of the Club's members. Other enjoyable events include the Schneider Cup, a competition where teams of members representing Australia and the Rest of the World do battle in a marvellous event that highlights the cosmopolitan membership of the Club.

It's even more fun if you end up on the winning team, of course. Otherwise expect to be reminded about the outcome by your rivals for the rest of the year!

Twilight golf, held on Fridays during summer, is equally pleasurable. Golf, spectacular sunsets and welcoming the weekend in with a refreshing post-round drink in the Clubhouse. A casual meal in the lounge is always popular for golfers and families.

BUYING, SELLING



or LEASING?



at
**First National
Albany**
we put you first.



**first
national**
REAL ESTATE

Albany

08 9842 1400
fnalbany.com.au



—
DETAILS OF MAJOR GOLF EVENTS
AT ALBANY GOLF CLUB ARE
ALWAYS PUBLICISED WELL IN
ADVANCE ON THE CLUB WEBSITE,
WWW.ALBANYGOLFCLUB.COM.AU
—

MAJOR GOLF EVENTS

Albany Golf Club hosts several feature golf events during the season which are open to members and players from other clubs.

These tournaments always receive wonderful support, are well received by the participants and give the Club the chance to showcase its excellent facilities to a wider audience.

One of the highlights of the year is the Wittenoom Cup Carnival. Held annually towards the end of January, it features 10 wonderful days of golf and is arguably the State's largest and most successful mixed handicap carnival of the year.

There are a variety of events and social functions throughout the Carnival. Participants don't necessarily play in all events, many golfers and their families make this time of year "holiday time" and enjoy all the delights that Albany and the Great Southern can provide.

The Carnival concludes over the final weekend with the Wittenoom Cup and the Brenda Wittenoom Open, 36-hole strokeplay events for men and women respectively.

The Club also hosts other prestigious events including the Albany Classic. Held over the long weekend at the beginning of March each year, this is one of the few regional qualifying events for the Golf WA prestigious Paxton Averages competition. The Classic is a 36-hole gross event played over two days with all players required to play one morning round and one afternoon round.

Specs or shades? Get both for just \$149

Including single-vision lenses

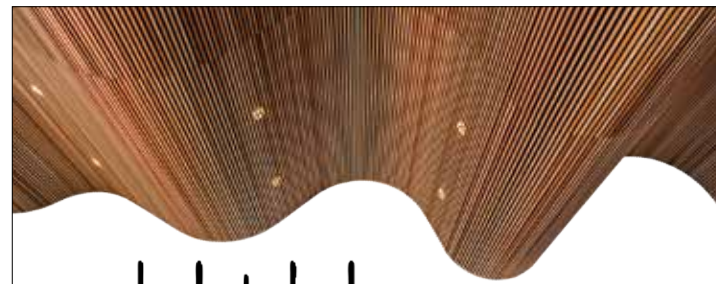


Specsavers

Specsavers Albany
284 York Street (Next to Optus) Tel 9841 2377

Book an eye test online

In store only. Single-vision lenses only. Lens upgrades available at an extra cost. Both pairs must be from the \$149 range and have the same prescription. Final price is based on price of higher value pair and any lens upgrades. Use with other offers restricted. AU_LAM_\$149SUN



H+H architects

ALBANY + KALGOORLIE + BUNBURY

WE DESIGN PRACTICAL, AFFORDABLE BUILDINGS
THAT RESPOND SENSITIVELY TO THE ENVIRONMENT
AND CONNECT WITH PEOPLE

H+H ARCHITECTS IS THE LARGEST REGIONAL
ARCHITECTURAL PRACTICE IN WA WITH OVER 25
YEARS OF EXPERIENCE SPECIALISING IN:

- COMMERCIAL**
- EDUCATION**
- HEALTH**
- COMMUNITY**
- SPORTING**
- TOURIST**
- HERITAGE & CONSERVATION**
- RESIDENTIAL + MULTI-RESIDENTIAL**
- LANDSCAPE DESIGN**
- INTERIOR DESIGN**
- MASTERPLANNING**
- PROJECT MANAGEMENT**



WWW.HHARCHITECTS.COM.AU
ADMIN@HHARCHITECTS.COM.AU
9842 5558

RECIPROCAL GOLF

Albany Golf Club has reciprocal relationships with a number of other golf clubs across Australia and New Zealand. These provide added value to memberships and allow members to enjoy golf on other fine courses at discounted rates while away from home for business or pleasure.

It is recommended that members check with the office prior to visiting a reciprocal club in relation to any special arrangements and regarding details of current participating clubs as the list is regularly updated. Reciprocal rights are in place for Full Members only. A letter of introduction is required when visiting reciprocal clubs.

Reciprocal playing rights are enjoyed with the following clubs:

WESTERN AUSTRALIA

- Capel Golf Club
- Cottesloe Golf Club
- Melville Glades Golf Club
- Mosman Park Golf Club
- Royal Perth Golf Club
- Spalding Park Golf Club
- Sun City Country Club
- The Links Kennedy Bay
- The Western Australian Golf Club
- The Vines
- Wanneroo Golf Club

SOUTH AUSTRALIA

- Stirling Golf Club
- Port Lincoln
- South Lakes Golf Club

VICTORIA

- Angelsea Flinders Golf Club
- Flinders Golf Club
- Rosanna Golf Club
- Rossdale Golf Club
- Warrnambool Golf Club

NEW SOUTH WALES

- Glen Innes Golf Club
- Hunter Valley Golf Club
- Yamba Golf & Country Club

QUEENSLAND

- Brisbane International
- Nudgee Golf Club
- Yeppoon Golf Club

NORTHERN TERRITORY

- Darwin Golf Club

NEW ZEALAND

- Feilding Golf Club



P (08) 98416711 F (08) 98418776

Surgery Hours

Monday – Friday 8.30 am to 6.00 pm

Saturday 9.00 am to 12.00 noon

Closed Sundays and Public Holidays

We are a practice committed to promoting health, wellbeing and disease prevention with evidence based medicine, delivered to all patients with dignity and respect. Inherent in all patient care service decisions, is an emphasis on the professional development of our staff and the flexibility to allow for changes as health care and the community evolves. Our mission is to recognise the value of every person and be guided by our commitment to excellence and leadership in primary health care.

Hillside provides care in all aspects of general practice include pre and post natal, men's and women's health, paediatrics, immunisations (including yellow fever), mental health, travel medicine, minor skin procedures, work place and pre-employment medicals.



JUNIORS

Parents looking for a Club for their child or aspiring junior golfers inspired to take up the game will find Albany Golf Club to be the perfect choice.

As a Club, we are family-friendly, progressive in our outlook and are committed to growing the sport we all love and introducing a whole new generation of golfers to the game in a safe and nurturing environment. Duty of care is always a high priority.

Juniors are particularly important, not only because they may ultimately become our Club Captains or committee men and women of the future, but also because their energetic and enthusiastic presence gives the Club a vibrant feel.

Online bookings available www.hillsidefp.com.au

HELLOWORLD ALBANY CENTRAL

Your local family owned travel expert.

Whatever your destination we can take you there.

HELLO
FRIENDS



HELLO
MEMORIES

HELLO
FAMILY



Our Expertise Extends to:

Exceptional customer service | Airfares & package holidays

Cruise & Group tours | 40 Years of Travel experience | Itinerary planning

Travel insurance | Destination expertise | Gift Vouchers | Specialist Holidays

Locally owned & operated | Group & Business Travel | Worldwide Rail

helloworld
TRAVEL
THE TRAVEL PROFESSIONALS

Helloworld Travel Albany Central York Street

185 York Street, Albany, WA 6330

P: (08) 9841 5744

E: albanycentral@helloworld.com.au



—
EACH SCHOOL TERM WE
CONDUCT NEW JUNIOR
BEGINNER CLINICS.
FOR DETAILS OF HOW YOUR
CHILD CAN ENJOY GOLF AT
ALBANY, DROP INTO THE
GOLF SHOP OR CALL THE
CLUB ON (08) 9844 8433.
—

For their part, juniors can learn much from golf. As well as being a hugely enjoyable sport, it teaches so many life skills such as common courtesy, good manners and playing by rules. Golf offers access to a healthy, fun outdoor sport and provides the opportunity to make new friends.

The other good news for juniors is that membership at Albany Golf Club is fantastic value, with substantial membership discounts available for the Tiger Cubs (age 5-12) and under-18s and under-21s.

Our Head Professional Michael Draper runs a Junior Golf program on Sundays for three levels of juniors depending on their age, ability and experience. Kids get to play shortened hole layouts on the main course and all equipment is provided. The emphasis is on fun, encouragement and enjoyment.



**TAXATION &
ACCOUNTING**



We offer a friendly and competitive accounting service specialising in:

- Business Accounting and Taxation Preparation | Negative Gearing and Tax Planning**
- BAS Preparation | Cashflow Forecasting and Finance Applications**
- Self Managed Super Fund Accounting | Individual Tax Returns**
- Business review for the purpose of purchasing or selling**
- Advice on start up of business | Business Budgeting**
- Audit for SMSF, Clubs & Associations**

P 9842 9677
E admin@gmtaxation.com.au
A 133 Lockyer Ave, Albany WA 6330
www.gmtaxation.com.au



VISITORS

Visitors wishing to come and enjoy our wonderful golf course are made to feel most welcome here at Albany Golf Club.

We are proud of our historic club, wonderful course and modern clubhouse. Members and staff at Western Australia's friendliest Club would be delighted to see you. Many of our members are former visitors or guests, who came to Albany for the first time and found the place and its atmosphere so special that they decided to become part of the Club.

It is always advisable to phone ahead to book a tee-time or to check with the Club our competition schedule for the day. Our first commitment is understandably to our members, but there are ample opportunities for visitors to enjoy the course as well. Tee-times for social play are generally available most Mondays, Tuesdays, Fridays and Sundays, on Wednesday and Saturday mornings and Thursday afternoons.

Lockyer Avenue Veterinary Hospital

You, your pets and us - a team for life.



TEL: 9841 7411

89 Lockyer Ave, Albany, WA 6330

lockyeravenue@petsandvetswa.com.au

www.petsandvetswa.com.au



WV
WEALTH ADVANTAGE



Tailored financial solutions

We provide solutions to clients seeking to grow and protect their wealth in today's ever changing economic climate.

Tim Sullivan and Noreen Les are passionate about helping clients to achieve what is important to them.

- Retirement Planning
- Wealth Creation
- Investment Advice
- Personal Insurance

By appointment

T 9892 9200

E wealth@wealthadvantage.com.au

www.wealthadvantage.com.au

Wealth Advantage Pty Ltd ACN 151 331 010
(authorised representative number 243092)
is a corporate authorised representative of Mont Partners Pty Ltd
ABN 33 627 827 776 Australian Financial Services Licensee number 511061.
Registered office at 106 Burswood Road, Burswood WA 6100



We have clubs for hire and all the things you need to have a good day on the greens. Pull buggies and electric carts are also available to hire and visitors are encouraged to stay on for a snack and a drink in the Clubhouse after their round. Friday arvos are a great time to visit or join in with members and socialise in the lounge or Sprig Bar.

Those visiting us for the first time should note that the Club has a dress code. Respect this and standard golfing etiquette such as maintaining a good pace of play and visitors will always be most welcome.

To book your round, call the Golf Shop on (08) 9844 8433.



GARY & LEE IRONMONGER 08 9841 4479

Concept to Creation



New Homes - Additions - Renovations

Communication - Consultation - Knowledge - Integrity

HIA Award Winners : 2003 2004 2005 2006 2007 2009 2010 2011 2012
2013 2015 2016 2018 2019. Excellence in Service 2011 & 2015



**HIA GREAT SOUTHERN HOUSING AWARDS
GREAT SOUTHERN HOME OF THE YEAR**

93 Cockburn Rd, ALBANY WA 6330

ironmongerbuilding.com.au

Ironmonger Building Company Pty Ltd
Reg No: 101095 ABN: 88 169 586 707 ACN: 169 586 707



PLAY AND STAY

The Great Southern region of Western Australia is a beautiful part of the world and one day is never enough for visitors to enjoy everything it has to offer.

It's the perfect spot to spend some time recharging the batteries, enjoying the relaxed way of life loved by the locals while also ensuring there's enough time set aside to make the most of the opportunity to enjoy some good golf on one of the country's top-rated courses.

The region is also a great destination as part of a golfing break, just don't forget to pack your clubs! To help plan your trip, we can put together "Play & Stay" packages with some of Albany's leading accommodation providers.

Take up a Special Deal from one of partners and we will give you a 20% discount on your green fees! Visit www.albanygolfclub.com.au to find out more.

Albany itself is a city steeped in history. It is actually the oldest permanently settled town in Western Australia, predating Perth and Fremantle.

The town has an important role in the ANZAC legend, being the last port of call for troopships departing Australia in the First World War and the magnificent new National Anzac Centre is a must-visit.

With award-winning beaches, wineries and so much more besides, you'll be spoilt for choice for things to do and see. For some ideas, visit the Amazing Albany tourism website: www.amazingalbany.com.au/things-to-do

ALBANY FUNERAL DIRECTORS

You & Your Family, Always our First Concern

Serving the South since the 1920's

We have been part of the Great Southern community since 1920, providing quality care & compassionate service, the way it should be.

*Celebrating 100 years
of service to the Albany
and surrounding countryside*

Funeral Services Australia Wide | Respectfully Arranged
24 Hours a Day | 7 Days a Week

77 – 81 Grey Street Albany WA 6330

Phone: +61 8 9842 3443 | **Fax:** +61 8 9842 1518

Email: admin@albanyfunerals.com.au

www.albanyfunerals.com.au



CLUBHOUSE

The Albany Golf Club clubhouse is a delightful place to spend some time in the company of friends. A stylish, two-storey building erected at the turn of the millennium, it offers modern comforts and a home away from home to members, guests and visitors alike.

Magnificent ocean views may be enjoyed and, if you're really lucky, you might get to catch a glimpse of the whales that return to King George Sound each year to frolic just outside the surf break.

In addition to the wonderful surroundings, a constant throughout the Club's existence has been the excellent service and the warmth of the welcome. Albany's staff pride themselves on the personal touch where nothing is too much trouble.



**BARBEQUES
GALORE**
BBQ Better.



The large Members' Lounge and Sprig Bar provides a comfortable setting in which to relax after a round of golf, or simply to meet up with friends for a chat over a great cup of coffee or a glass of Great Southern fine wine. Whether a lifelong member or first-time visitor, the clubroom offers a haven of calm and tranquillity and the promise of rekindling old friendships or making new ones whilst looking over Middleton Beach.

Snacks are readily available, nibbles at the nineteenth may be enjoyed on a Friday night and there are themed dining events held throughout the year. Or you can just catch up with your mates and enjoy a beer while watching the footy, cricket or whatever is on.

As you enjoy your surroundings remember, too, that the Club has a selection of meeting rooms and function areas should you wish to host an event for business or leisure. We also cater.

Barbeques Galore Albany | 126 Lockyer Ave Albany WA 6330 | Phone 08 9841 8804
bbqsgalorealbany@westnet.com.au | www.barbequesgalore.com.au



FUNCTIONS & SPECIAL OCCASIONS

Albany Golf Club is delighted to be able to offer you a top class dining facility and kitchen for events, functions all year round to members and the local community.

Our magnificent venue has developed an enviable reputation for its function hosting and makes an excellent choice for that wedding reception, cocktail party, business seminar, end-of-year celebration, birthday party, reunion, anniversary dinner, black tie event or corporate awards evening or any other event you choose to enjoy.

Here at Albany Golf Club we are committed to creating your dream day, within your budget. It is our attention to detail that sets us apart. We partner many local hospitality businesses that can assist.



Ascan Volckerts
0408 363 073
reddogcarpentry.com.au

INDIVIDUALLY CRAFTED HOMES
THAT STAND THE TEST OF TIME



BC 101144



Excellence in Cabinetry

Since 1983

Quality Bespoke Cabinets

- Kitchens & Sculleries
- Alfresco Cabinets
- Office Furniture
- Wardrobes
- Etc...



P. 9841 3122 A. 39 Campbell Road, Albany WA 6330 E. jake@superiorkitchens.net.au www.superiorkitchens.net.au



SURROUNDED BY AN OASIS OF GREEN AND OFFERING STUNNING OCEAN VIEWS OVER KING GEORGE SOUND, THE CLUB'S HIGHLY-REGARDED FUNCTION VENUE IS ARGUABLY THE MOST SOUGHT-AFTER IN THE REGION.

Our magnificent venue has developed an enviable reputation for its function hosting and makes an excellent choice for that wedding reception, cocktail party, business seminar, end-of-year celebration, birthday party, reunion, anniversary dinner, black tie event or corporate awards evening or any other event you choose to enjoy.

Here at Albany Golf Club we are committed to creating your dream day, within your budget. It is our attention to detail that sets us apart. We partner many local hospitality businesses that can assist.

We understand that every function is a truly unique event and we are more than happy to tailor a package specifically for you. Our dedicated team can help make a special occasion simply that, ensuring that all your expectations are met and exceeded.

Surrounded by an oasis of green and offering stunning ocean views over King George Sound, the Club's highly-regarded function venue is arguably the most sought-after in the region. Just five minutes from the CBD, with extensive car parking and stunning modern facilities, our venue is exclusive yet accessible.

Choose from the main function room, or from one of our two conference rooms for smaller corporate meetings. Office facilities and presentation equipment is readily available with catering options.

For more information, please contact our Function Co-ordinator by email: admin@albanygolfclub.com.au or phone: (08) 9844 8855 to discuss your event and to arrange a viewing.



DORALANE PASTRIES

We specialise in making all the bakery favourites including:



Speciality decorated cakes, pies, pasties, sausage rolls, all sweet and savoury pastries, log cakes and a variety of slices.

We do a large range of sandwiches, rolls and wraps. Doralane's provide catering services for morning and afternoon teas including lunches.

Your locally owned family business

E doralanepastries@bigpond.com

P 08 98 425 600

32 Angove Road
Spencer Park
Albany 6330





Insurance

Elders Insurance Albany

Locally Owned
Locally Operated

Gordon Russell Scott Weaver
Jason Loveridge Craig Anning

- Farm
- Business
- Personal
- Commercial
- Landlord

189 Chester Pass Road, Albany
insurancealbany@elders.com.au

- 9842 7902 -



WELCOME TO ALBANY TYREPOWER!

We are your one stop shop for
all tyres and wheels in Albany
& surrounding areas.

We stock tyres from all the major brands,
with a great range of tyres available from
budget friendly options through to the
latest in off-road and on-road technology.

There is something to fit all makes and models!

With friendly, expert advice on all your tyre,
wheel and brake needs for your vehicle,
we'll give you a tailored customer service
experience that will keep you coming back
and recommending us to family and friends.

So if you are in Albany looking for
all the big names in tyres including Dunlop,
Michelin, Toyo, Goodyear and Maxxis
call us now and get the
POWER at Albany Tyrepower.



P. 08 9842 1300
E. albany@tyrepower.com.au
A. 119 Chester Pass Rd, Albany WA 6330



CORPORATE GOLF DAYS

A Corporate Golf Day at Albany Golf Club is the ultimate way to entertain clients and develop new business prospects in the wonderful surroundings of a highly-regarded golf course.

We understand the importance of making the right impression and will ensure that the day is successful and memorable for everyone involved.

Building and maintaining solid relationships are important for any business. Hosting your event with us is a great way to show your clients, prospects and staff how much you value them.

Golf events can be tailored for all budgets with a variety of options from which to choose. Our years of experience and understanding the needs of a changing corporate environment will ensure your event exceeds expectations.

With a superbly maintained and conveniently located golf course just five minutes from the CBD, a spacious and well-appointed clubhouse, great food and key staff dedicated to make your day a complete success, Albany Golf Club ticks all the boxes when it comes to corporate or charity golf days.



PRECISION PARK A VENUE FOR MEMBERSHIP

Please Contact Precision Hearing

Unit 25/227 North Road, Albany P. 98416122 E. office@precisionhearing1.com.au



Your golf day will be a great opportunity to do business in relaxed surroundings, or simply have an enjoyable time with clients, staff or colleagues at one of Western Australia's most historic and best-loved courses.

We can accommodate golf days of all sizes. The Club has some carts available for hire, but the course is easy walking.

There is a great selection of merchandise available in the Golf Shop, which is the perfect place to stock up with any competition prizes you should require.

Our friendly team of Professionals can provide you with nearest the pin and longest drive markers should they be required and are available for golfing tuition or to put on group golfing clinics before play if desired.

Our catering and hospitality team provide an extensive menu selection that is certain to satisfy all tastes and budgets. We can even cater for you out on the course and a drinks cart is available!

Want to mix business with pleasure? The Club has two purpose-built rooms for conferences and business meetings available for hire, complete with modern audio-visual equipment to ensure any presentation is a success.

Enquiries about holding a Corporate Day at the Club can be directed to our Functions Co-ordinator.

Email: admin@albanygolfclub.com.au or call the Office on (08) 9844 8855.



Bennetts Batteries, Oils and Filters are a locally owned and operated business serving the great Southern.

We supply quality brands to suit Automotive, Motorcycles, Marine, Agriculture, Earthmoving and even your golf carts. So, Get in to Bennetts and get on the move!

HUGE RANGE OF BRANDS



P. (08) 9842 5442 E. sales@bennettlubricants.com.au
A. 2 Catalina Rd, Albany WA www.bennettsbatteries.com.au



HOW TO FIND US

Albany Golf Club is located just five minutes north-east of the Albany CBD.

Directions

Take Middleton Road east out of the city towards Middleton Beach. Take the first left at the roundabout on to Golf Links Road (signposted Emu Point) and remain on this road for around 2km (it becomes Emu Point Drive). Take the first right on to Barry Court (look out for the yellow Albany Golf Club sign) and you will see the entrance to the Club about 100m up on the right-hand side. There is a large car park immediately in front of the clubhouse and much holiday accommodation right alongside.

Contact Details

Albany Golf Club
1 Barry Court (off Golf Links Road)
Middleton Beach
Albany, Western Australia 6330

Postal address:

PO Box 135
Albany, Western Australia 6331

Phone:

Office: 08 9844 8855
Functions: 08 9844 8855
Golf Shop: 08 9844 8433
Fax: 08 9844 8866

E-mail:

admin@albanygolfclub.com.au

Website:

www.albanygolfclub.com.au

Social Media: Keep up to date with all the latest Club news by liking our Facebook page. facebook.com/albanygolf (@albanygolf)

17 years in ALBANY

11 years in our CURRENT SHOP



- Over 4000 Products!
- Local Shop, Local People
- Service & Repairs Workshop
- Trials & Demos available
- Friendly, Helpful Team
- Hire Option Available



Calibre Care
quality healthcare solutions

P. 9841 4200

13 Cockburn Road, Albany
(500m past roundabout, on your right)