



The Bay Regatta
PHUKET • PHANG NGA • KRABI

The Bay Regatta

31st March - 4th April, 2021
PHUKET • PHANG NGA • KRABI



The Bay Regatta
PHUKET • PHANG NGA • KRABI

Co-Sponsors



Co-Sponsors

2021 Venue Partners



2021 Regatta Partners



Local Supporters



Event Organiser and Supporting Authorities



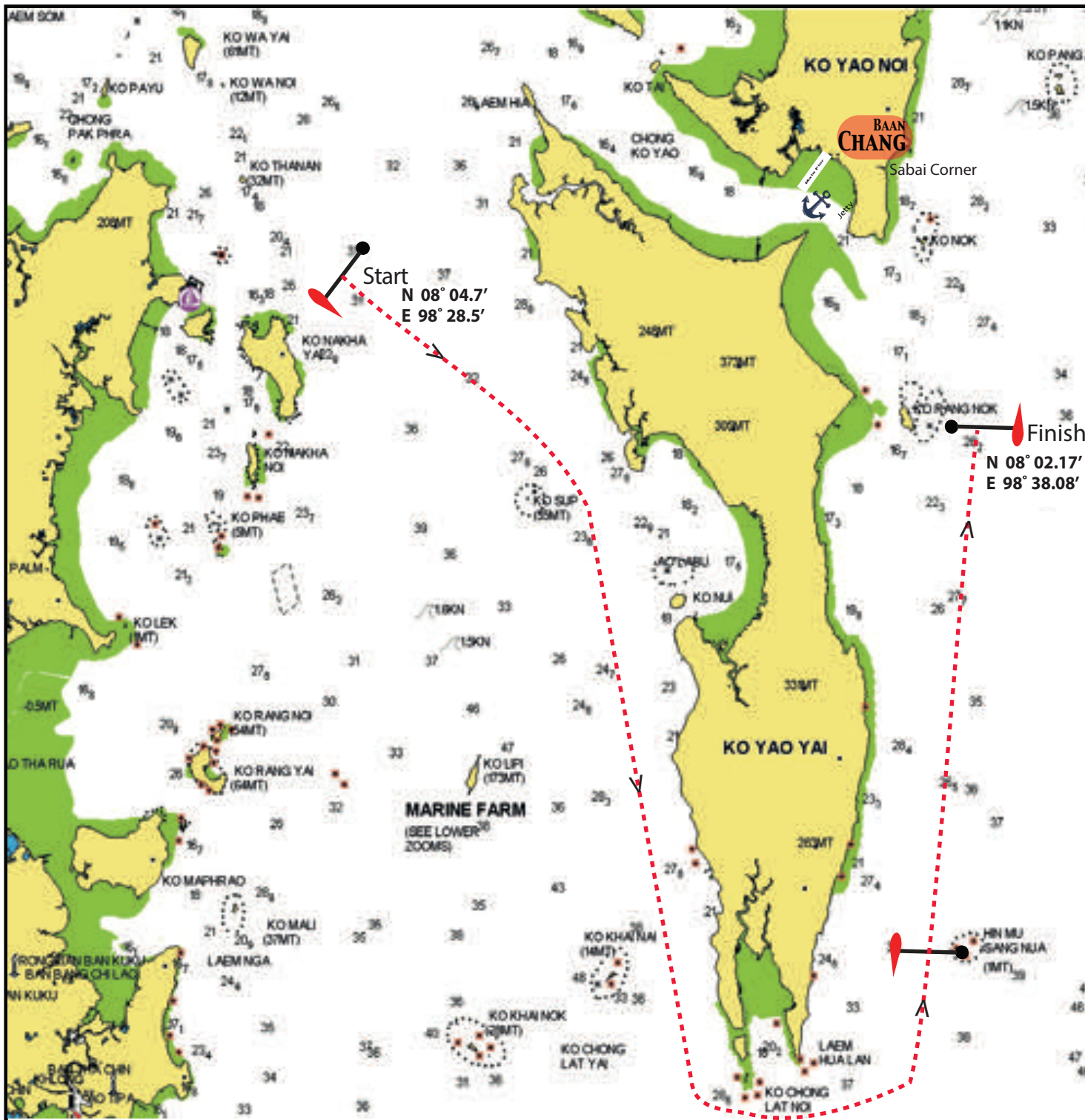
Media Partners



www.bayregatta.com

Event Management by:





Really Good Deli/SEA Yachting Race Day (Ao Po - Ko Yao Noi)

FIRST WARNING SIGNAL 09.00

Course 1 - 25 Miles (illustrated)

(See Sailing Instruction 5.6 for Possible Upwind Start)

START off Ko Naka Yai.

Pass Ko Sup to Starboard

Round Ko Yao Yai to Port

Gate (Pass Between Committeeboat and Hin Mu Sang Mu Nua)

FINISH off Ko Rang Nok

After finish, proceed to your preferred Anchorage for the Presentation Party 18.00 - 21.00

The suggested anchorage is between Ko Yao Noi and Ko Yao Yai (See separate Entrance to Ko Yao page for details)

Complementary Longtail are available in the Ko Yao Channel only with Songtao transfers to Baan Chang Restaurant for the presentation party only between 15.00 - 21.30

Chargable Songtao Transport to resorts are also available from the Floating Blue Jetty.

For resort transfers and morning longtail (Chargable), please liase with your resort.



The 24th Bay Regatta
PHUKET • PHANG NGA • KRABI
31st March - 4th April 2021



Race to Krabi

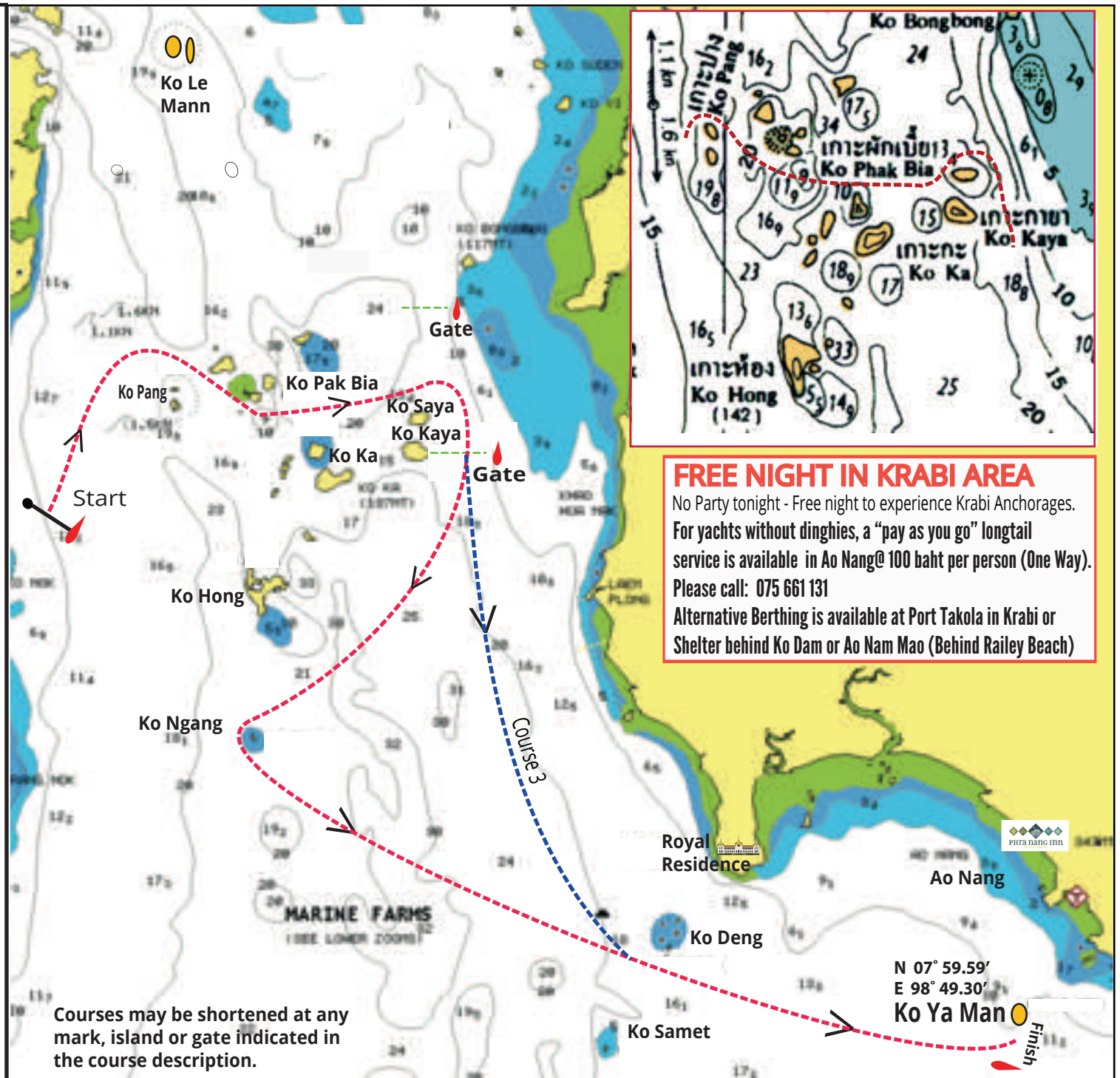
FIRST WARNING SIGNAL 10.00

Course 2 - 20 Miles (Illustrated)

Start East of Ko Yao Noi
 Round Ko Pang Starboard
 Pass Ko Pak Bia to Port,
 Pass Ko Ka to Starboard
 Round Ko Saya Taling to Starboard
 Pass through Gate at Ko Kaya
 (Gate between Island and Committee boat)
 Round Ko Ngang to Port
 Pass Between Ko Deng and Ko Samet
 FINISH between Committee Boat and Ko Ya Man

Course 3 - 17 Miles

Start East of Ko Yao Noi
 Round Ko Pang to Starboard
 Pass Ko Pak Bia to Port,
 Pass Ko Ka to Starboard
 Round Ko Saya Taling to Starboard
 and Pass through Gate at Ko Kaya
 (Gate between Island and Committee boat)
 Pass Between Ko Deng and Ko Samet
 FINISH between Committee Boat and Ko Ya Man



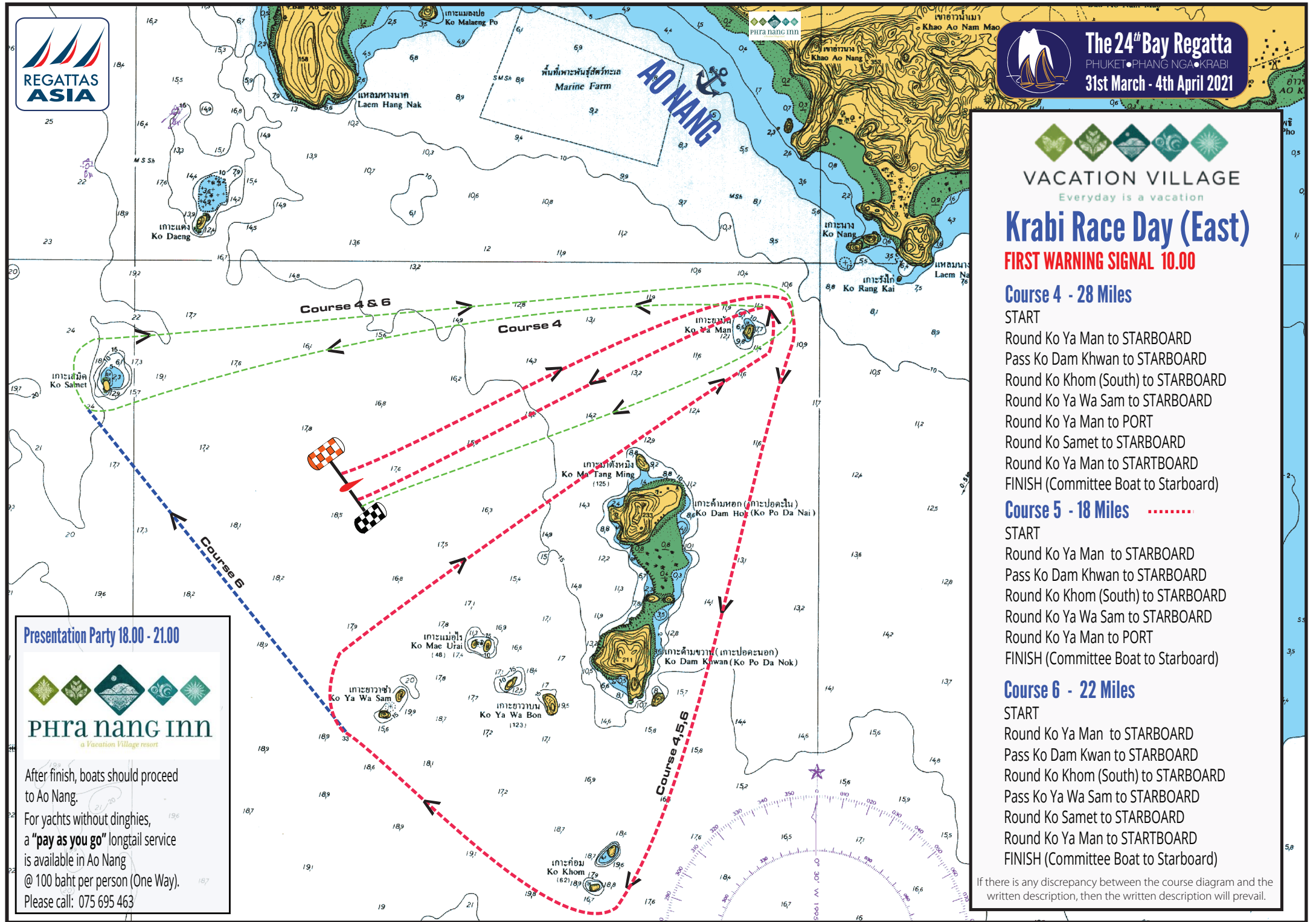
FREE NIGHT IN KRABI AREA
 No Party tonight - Free night to experience Krabi Anchorages.
 For yachts without dinghies, a "pay as you go" longtail service is available in Ao Nang @ 100 baht per person (One Way).
 Please call: 075 661 131
 Alternative Berthing is available at Port Takola in Krabi or Shelter behind Ko Dam or Ao Nam Mao (Behind Railey Beach)

Courses may be shortened at any mark, island or gate indicated in the course description.





The 24th Bay Regatta
 PHUKET • PHANG NGA • KRABI
 31st March - 4th April 2021



Krabi Race Day (East)

FIRST WARNING SIGNAL 10.00

Course 4 - 28 Miles

- START**
- Round Ko Ya Man to STARBOARD
 - Pass Ko Dam Khwan to STARBOARD
 - Round Ko Khom (South) to STARBOARD
 - Round Ko Ya Wa Sam to STARBOARD
 - Round Ko Ya Man to PORT
 - Round Ko Samet to STARBOARD
 - Round Ko Ya Man to STARTBOARD
- FINISH (Committee Boat to Starboard)**

Course 5 - 18 Miles

- START**
- Round Ko Ya Man to STARBOARD
 - Pass Ko Dam Khwan to STARBOARD
 - Round Ko Khom (South) to STARBOARD
 - Round Ko Ya Wa Sam to STARBOARD
 - Round Ko Ya Man to PORT
- FINISH (Committee Boat to Starboard)**

Course 6 - 22 Miles

- START**
- Round Ko Ya Man to STARBOARD
 - Pass Ko Dam Kwan to STARBOARD
 - Round Ko Khom (South) to STARBOARD
 - Pass Ko Ya Wa Sam to STARBOARD
 - Round Ko Samet to STARBOARD
 - Round Ko Ya Man to STARTBOARD
- FINISH (Committee Boat to Starboard)**

If there is any discrepancy between the course diagram and the written description, then the written description will prevail.

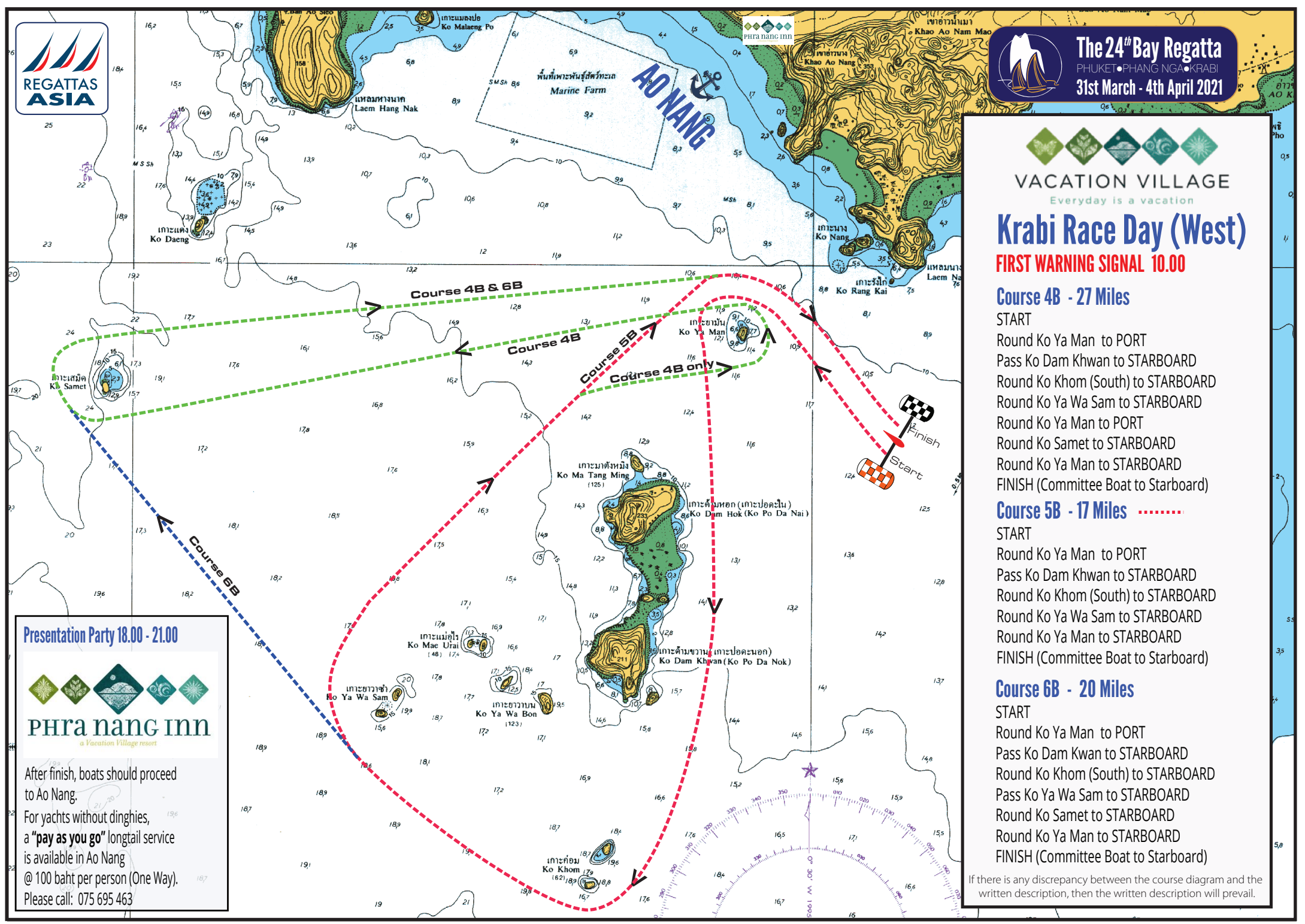
Presentation Party 18.00 - 21.00



After finish, boats should proceed to Ao Nang.
 For yachts without dinghies, a "pay as you go" longtail service is available in Ao Nang @ 100 baht per person (One Way).
 Please call: 075 695 463



The 24th Bay Regatta
 PHUKET • PHANG NGA • KRABI
 31st March - 4th April 2021



Krabi Race Day (West)

FIRST WARNING SIGNAL 10.00

Course 4B - 27 Miles

START
 Round Ko Ya Man to PORT
 Pass Ko Dam Khwan to STARBOARD
 Round Ko Khom (South) to STARBOARD
 Round Ko Ya Wa Sam to STARBOARD
 Round Ko Ya Man to PORT
 Round Ko Samet to STARBOARD
 Round Ko Ya Man to STARBOARD
FINISH (Committee Boat to Starboard)

Course 5B - 17 Miles

START
 Round Ko Ya Man to PORT
 Pass Ko Dam Khwan to STARBOARD
 Round Ko Khom (South) to STARBOARD
 Round Ko Ya Wa Sam to STARBOARD
 Round Ko Ya Man to STARBOARD
FINISH (Committee Boat to Starboard)

Course 6B - 20 Miles

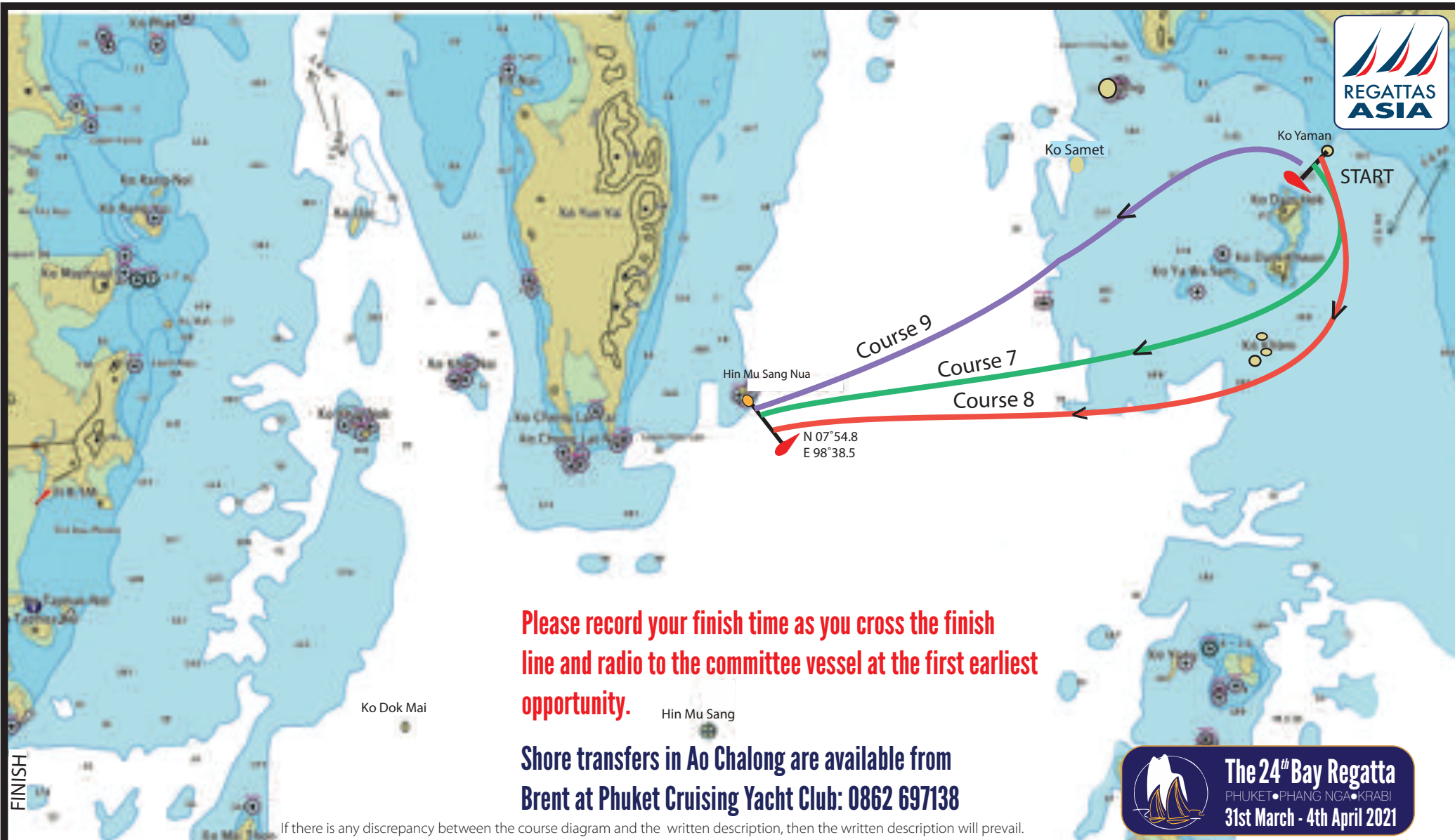
START
 Round Ko Ya Man to PORT
 Pass Ko Dam Kwan to STARBOARD
 Round Ko Khom (South) to STARBOARD
 Pass Ko Ya Wa Sam to STARBOARD
 Round Ko Samet to STARBOARD
 Round Ko Ya Man to STARBOARD
FINISH (Committee Boat to Starboard)

If there is any discrepancy between the course diagram and the written description, then the written description will prevail.

Presentation Party 18.00 - 21.00



After finish, boats should proceed to Ao Nang.
 For yachts without dinghies, a "pay as you go" longtail service is available in Ao Nang @ 100 baht per person (One Way).
 Please call: 075 695 463



Please record your finish time as you cross the finish line and radio to the committee vessel at the first earliest opportunity.

Shore transfers in Ao Chalong are available from Brent at Phuket Cruising Yacht Club: 0862 697138

 **The 24th Bay Regatta**
PHUKET • PHANG NGA • KRABI
31st March - 4th April 2021

If there is any discrepancy between the course diagram and the written description, then the written description will prevail.

Course 7 - 14 Miles 

START between Committee Vessel and Ko Yaman
Round Ko Dam Hok to Starboard
Pass Ko Dam Khwan to Starboard
FINISH (Hin Mu Sang Nua)

Course 8 - 17 Miles 

START between Committee Vessel and Ko Yaman
Round Ko Yaman Starboard
Pass Ko Dam Hok and Koh Dam Khwan to Starboard
Pass Ko Khom Group to Starboard, FINISH (Hin Mu Sang Nua)

FIRST WARNING SIGNAL 08.00

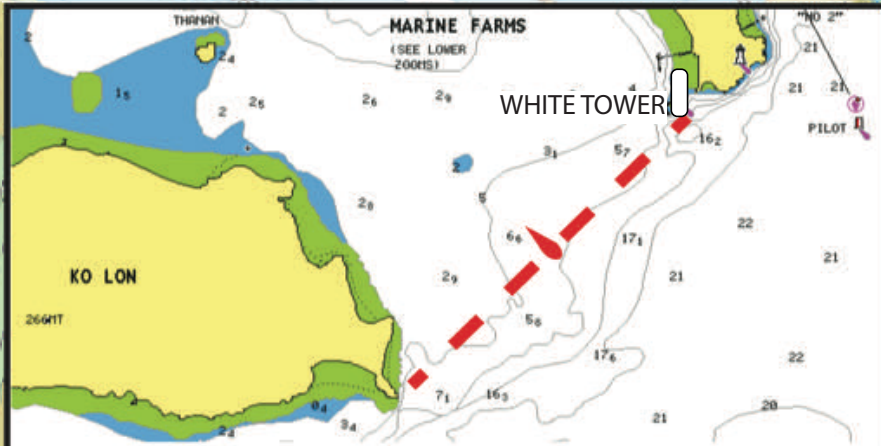
Course 9 - 11 Miles 

START between Committee Vessel and Ko Yaman
FINISH (Hin Mu Sang Nua)

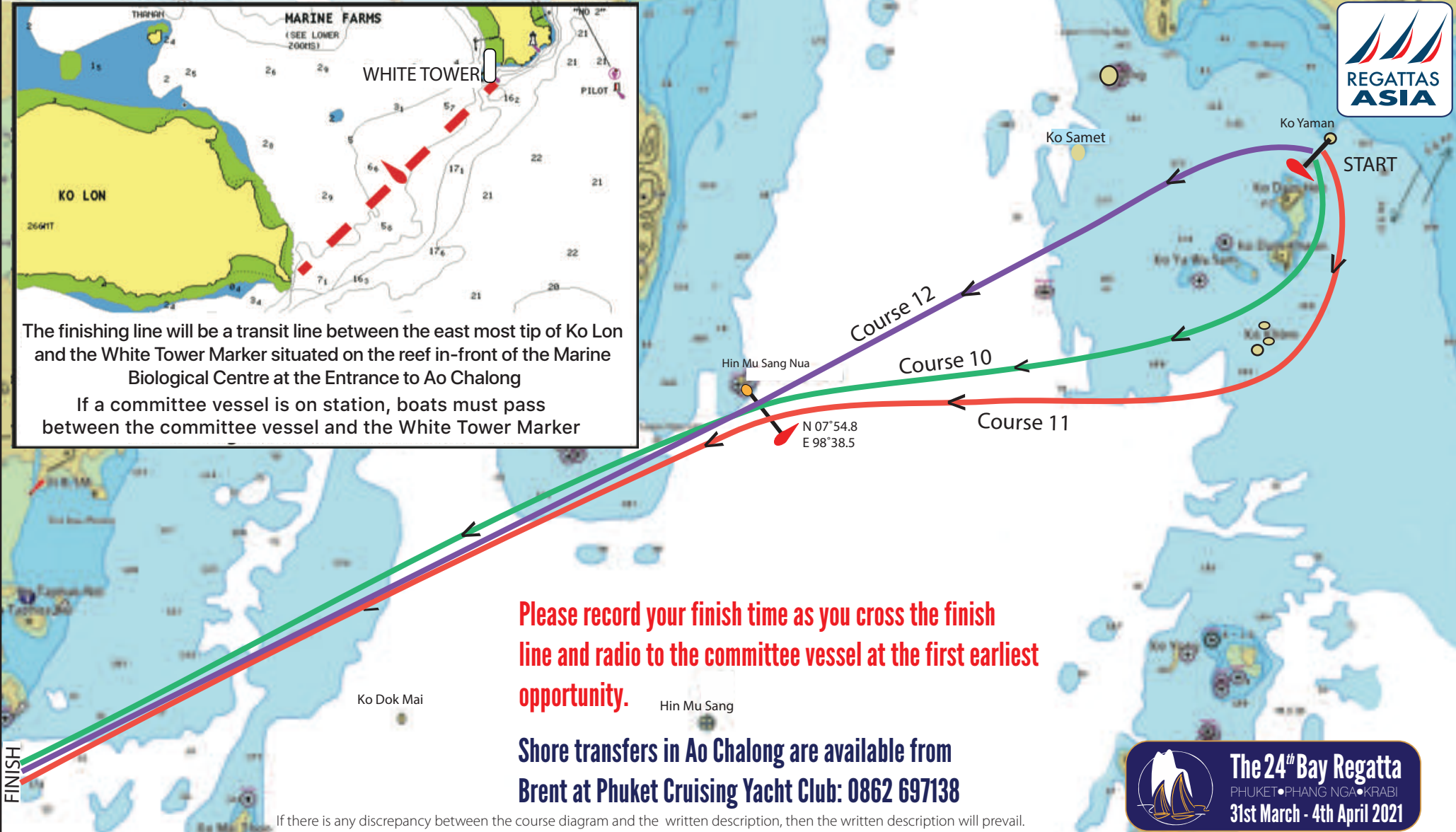
If there is any discrepancy between the course diagram and the written description, then the written description will prevail



FINISH



The finishing line will be a transit line between the east most tip of Ko Lon and the White Tower Marker situated on the reef in-front of the Marine Biological Centre at the Entrance to Ao Chalong
 If a committee vessel is on station, boats must pass between the committee vessel and the White Tower Marker



Please record your finish time as you cross the finish line and radio to the committee vessel at the first earliest opportunity.

Shore transfers in Ao Chalong are available from Brent at Phuket Cruising Yacht Club: 0862 697138

If there is any discrepancy between the course diagram and the written description, then the written description will prevail.



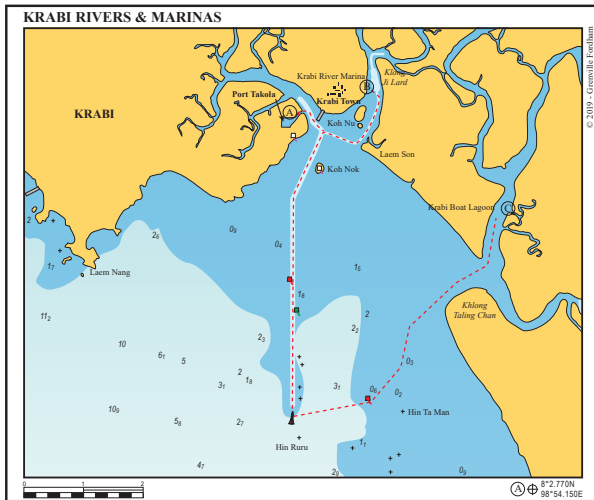
The 24th Bay Regatta
 PHUKET • PHANG NGA • KRABI
 31st March - 4th April 2021

Course 10 - 30 Miles █
 START between Committee Vessel and Ko Yaman
 Pass Ko Dam Hok to Starboard
 Pass Ko Dam Khwan to Starboard
 Through Gate (Hin Mu Sang Nua)
 FINISH (Entrance to Ao Chalong - See Note.)

Course 11 - 33 Miles █
 START between Committee Vessel and Ko Yaman
 Pass Ko Dam Hok/Khwan to Starboard
 Pass Ko Khom Group to Starboard
 Through Gate (Hin Mu Sang Nua)
 FINISH (Entrance to Ao Chalong - See Note.)

FIRST WARNING SIGNAL 08.00
Course 12 - 26 Miles █
 START between Committee Vessel and Ko Yaman
 Through Gate (Hin Mu Sang Nua)
 FINISH (Entrance to Ao Chalong - See Note.)





Tide Timetables Phuket and Krabi

เกาะตพาน้อย (ภูเก็ต)
Ko Thaphao Noi (Phuket)

ปากน้ำกระบี่ (กระบี่)
Pak Nam Krabi (Krabi)

เกาะตพาน้อย APRIL				ปากน้ำกระบี่ APRIL			
เวลา	สูง (ม.)	เวลา	สูง (ม.)	เวลา	สูง (ม.)	เวลา	สูง (ม.)
TIME	HT (m)	TIME	HT (m)	TIME	HT (m)	TIME	HT (m)
1	0032 3.17	16	0017 2.89	1	0105 3.68	16	0047 3.39
TH	0646 0.64	FR	0620 1.02	TH	0712 0.65	FR	0645 1.05
	1256 3.30		1235 3.12		1332 3.86		1313 3.60
	1912 0.77		1848 1.04		1932 0.84		1910 1.10
2	0110 2.95	17	0043 2.77	2	0139 3.44	17	0113 3.21
FR	0721 0.87	SA	0644 1.16	FR	0741 0.89	SA	0708 1.19
	1332 3.12		1301 3.01		1407 3.66		1339 3.46
	1948 0.98		1915 1.19		2002 1.06		1935 1.26
3	0149 2.69	18	0108 3.12	3	0214 3.12	18	0140 3.01
SA	0757 1.14	SU	0708 1.32	SA	0811 1.19	SU	0732 1.37
	1413 2.89		1330 2.86		1444 3.38		1409 3.28
	2031 1.23		1947 1.36		2036 1.34		2004 1.46
4	0239 2.41	19	0139 2.45	4	0256 2.78	19	0213 2.79
SU	0839 1.43	MO	0740 1.51	SU	0845 1.53	MO	0801 1.60
	1506 2.64		1407 2.69		1530 3.06		1447 3.08
	2136 1.49		2033 1.56		2122 1.65		2043 1.70
5	0419 2.19	20	0227 2.28	5	0412 2.49	20	0314 2.59
MO	0954 1.70	TU	0832 1.72	MO	0939 1.87	TU	0846 1.85
	1645 2.44		1510 2.52		1659 2.80		1553 2.90
			2157 1.71		2350 1.87		2150 1.92
6	0000 1.59	21	0507 2.19	6	0650 2.47	21	0520 2.53
TU	0700 2.20	WE	1019 1.88	TU	1239 2.02	WE	1014 2.08
	1233 1.76		1721 2.46		1903 2.81		1745 2.86
	1902 2.46						
7	0148 1.41	22	0026 1.64	7	0215 1.63	22	0048 1.86
WE	0826 2.43	TH	0715 2.36	WE	0835 2.75	TH	0723 2.76
	1404 1.56		1246 1.78		1429 1.76		1306 2.01
	2027 2.67		1912 2.62		2037 3.04		1930 3.05
8	0239 1.19	23	0138 1.39	8	0300 1.34	23	0156 1.57
TH	0907 2.66	FR	0811 2.64	TH	0925 3.05	FR	0828 3.09
	1456 1.33		1359 1.53		1518 1.48		1420 1.74
	2109 2.86		2012 2.85		2129 3.29		2037 3.32
9	0316 1.01	24	0226 1.11	9	0338 1.13	24	0247 1.27
FR	0938 2.84	SA	0852 2.92	FR	1003 3.29	SA	0915 3.41
	1534 1.14		1450 1.26		1559 1.27		1517 1.45
	2141 2.99		2057 3.06		2206 3.46		2126 3.55
10	0348 0.89	25	0308 0.86	10	0413 0.99	25	0335 1.01
SA	1004 2.99	SU	0929 3.18	SA	1035 3.45	SU	1000 3.68
	1607 1.00		1535 1.00		1634 1.12		1606 1.18
	2208 3.07		2137 3.23		2235 3.56		2209 3.72
11	0417 0.82	26	0349 0.68	11	0443 0.92	26	0419 0.82
SU	1029 3.11	MO	1005 3.39	SU	1102 3.57	MO	1040 3.89
	1637 0.91		1617 0.81		1705 1.03		1651 0.96
	2234 3.10		2216 3.32		2301 3.61		2249 3.82
12	0445 0.79	27	0430 0.59	12	0511 0.88	27	0501 0.70
MO	1054 3.19	TU	1042 3.53	MO	1128 3.66	TU	1120 4.04
	1705 0.86		1700 0.68		1734 0.96		1732 0.81
	2300 3.10		2256 3.34		2328 3.63		2329 3.84
13	0509 0.80	28	0510 0.60	13	0537 0.87	28	0541 0.68
TU	1118 3.24	WE	1119 3.58	TU	1155 3.73	WE	1159 4.11
	1731 0.84		1739 0.65		1800 0.93		1809 0.76
	2326 3.06		2335 3.27		2356 3.61		
14	0532 0.84	29	0548 0.69	14	0601 0.90	29	0006 3.78
WE	1144 3.24	TH	1158 3.54	WE	1222 3.74	TH	0616 4.06
	1757 0.86		1818 0.72		1824 0.94		1235 4.79
	2351 2.99						1843 0.81
15	0557 0.92	30	0015 3.12	15	0022 3.52	30	0044 3.63
TH	1209 3.21	FR	0627 0.87	TH	0623 0.95	FR	0649 0.92
	1823 0.93		1237 3.42		1247 3.70		1313 3.97
			1857 0.86		1846 1.00		1915 0.96

สูงของน้ำทำนายเป็นเมตรเหนือระดับน้ำลงต่ำที่สุด

สูงของน้ำทำนายเป็นเมตรเหนือระดับน้ำลงต่ำที่สุด

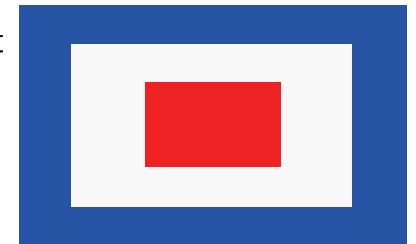
Important Information (All Courses)

Special Signals

Add a New FIRST Windard Mark

Code Flag W displayed on the start boat means ADD an new FIRST Mark to the Course Description.

This Mark will be to Windward and is to be rounded in the direction indicated by the Card/Flag displayed:



RED to Port, Green to Starboard

Return to Finish

A committee boat at a mark displaying **Code Flag R** (red background with yellow cross) means complete the current rounding or passing and race directly to the finish line.



Schedule of Races

Race Day 1 - 1st April

Race Day 2 - 2nd April

Race Day 3 - 3rd April

Race Day 4 - 4th April

First Warning Signal 09.00

First Warning Signal 10.00

First Warning Signal 10.00

First Warning Signal 08.00

Upcoming Thailand Regattas 2021

Top of the Gulf (Pattaya)

Samui Regatta

Multihull Solutions Regatta

Cape Panwa Phuket Race Week

Phuket King's Cup Regatta

November 2021

22nd - 29th May

9th - 12th July

14th - 18th July

4th - 12th Dec

The 24th Bay Regatta
PHUKET • PHANG NGA • KRABI
31st March - 4th April 2021