



Bonner 2023 Summer Leadership Institute



May 31 to June 3, 2023 at Montclair State University



Connect & Share



Follow us on Instagram, Facebook & Twitter

We actively use these sites to share pics and information, especially during meetings. This is a good way to connect with more information from your Bonner friends and about the field.

INSTAGRAM: @BonnerLove

TWITTER: @BonnerNetwork

FACEBOOK: Bonner Love and The Bonner Foundation



Bonner Learning Community

This is our learning platform where we host a wide range of webinars and network-wide discussions. Participants include Bonner student leaders, staff, and faculty.



Join Bonner Alumni Network on LinkedIn

More than 1,000 alumni and staff veterans are part of this group on LinkedIn. In the coming year, we'll launch new resources and updates via LinkedIn for community engagement professionals and alumni.

SLI Photo Circle



Share any pictures you take throughout the conference with us by scanning the QR code and uploading your photos!



Scavenger Hunt

@Montclair State University!

To win this Scavenger Hunt, complete the most tasks in groups of five (you can mix across programs) before another group. For the task to be considered done, you must take and send a photo of everyone in your group completing the task and upload it to the Bonner SLI Scavenger Hunt Photo Circle Album (using the QR code below)! Team members cannot split up to complete tasks.



To start: Take a picture with Sofia Perez and give her your team name and group members.

- Take a picture with the people (statues) outside of Cole Hall
- Take a picture rubbing Rocky's beak for good luck!
- Throw what you know...take a picture using the B-Love sign
- Make a TikTok video with your group
- Take a picture with the Montclair Bonner Program rock
- Find other rocks and get a photo with one (or more!)
- Take a picture with Rocky or Pebbles
- Take a selfie with a plenary or panel speaker
- Phone eats first! Take a picture of what you're eating
- Have a photoshoot in the Nest
- Fit Check! Take a picture of your 'fits for Funky Friday!
- Take a picture with at least 5 people on the Bonner and Montclair SLI Leadership Team
- Take a picture while you're engaging in Wednesday or Thursday night Social Events
- Take a picture at the skyline
- Learn a phrase in another language, and take a video of your group saying it!
- Take a picture in one of your cozy weekend rooms
- Soaring...Flying Take a HSM style pic in front of Car Parc Diem!

**Scan QR code
To Submit Your
Team Scavenger
Hunt Pictures**



**Winners will be
announced during
Funky Friday Prom!**



Table of Contents

Welcome to Montclair State University!

Welcome.....	2
About President Jonathan Koppell	3
About Montclair State University	4
About the Center for Community Engagement	5
About Montclair and the Surrounding Communities.....	6
About the Theme	7
The National Bonner Network.....	8
About the Bonner Foundation.....	9

Agenda

Wednesday, May 31	10
Thursday, June 1	11
Friday, June 2.....	14
Saturday, June 3	17

SLI Plenary Session Speakers

Together Towards Tomorrow: Juntos Lo Logramos.....	18
Investing in Place and People: Local and Global	20

Special Track and Session Descriptions

A Guide to Tags.....	24
Key Initiatives & Dates	25
Pathways to Public Service: <i>"Reflections on Our Movement: Transforming Lives, Campuses, and Communities"</i>	26
Role-Based Tracks.....	29
Open Space Session.....	58

Elective Workshop Descriptions

Block 1	36
Block 2	40
Block 3	44

Bonner Partners

National Partners	48
Graduate School Partners.....	54

More

Restaurants & Entertainment in and near Montclair	60
Thank You	62
Expectations and Emergencies	64
Map.....	back page

Welcome to Montclair State University!

On behalf of the Montclair State University and our 2023 Summer Leadership Institute (SLI) Planning Team, welcome! We are so excited to have you on our campus and in our community. Over the past two years, there has been a renewed energy around community engagement and public service at Montclair State University, which makes it even more exciting for us to introduce you to our world and share in the exciting and challenging work.

SLI has always served as a time of renewal, growth and learning for Montclair State. Our full BLT team has actively attended SLI each year since the inception of the Bonner Leader Program at Montclair as part of their initial welcome to the leadership team. To be able to host the event many of our student leaders look forward to attending year after year is an absolute honor.

The Bonner Leader Program at Montclair State University started with just four students in 2009. Since then, the program has expanded to include 40+ students each year and grown in its capacity to serve local communities. Through Bonner, students have engaged in direct service, capacity building projects, and advocacy work to change our world. Several of our alumni have become employees of their service sites. We are growing in our collaboration with the Paterson One Square Mile Project, a place-based, hyper-local partnership initiative, where the university serves as a systems-integrator that invests in human capital and coordinates existing community activity within a concentrated geography. One Square Mile will be Montclair State's first deliberate and focused attempt to deepen its engagement in Paterson, New Jersey, one of the historic communities in the state and one that boasts a vibrant cultural and industrial history. The



Bonner Love is felt all throughout the Montclair community and communities abroad.

Here in New Jersey, Memorial Day Weekend is the unofficial start to summer with BBQs, traffic, and trips to the shore. We hope this SLI becomes the best unofficial start to your summer! Our planning team has spent countless hours preparing for your arrival. We're so excited the time is finally here! We hope you spend some time exploring Montclair and our surrounding communities. Enjoy the conference and your visit!

About President Jonathan Koppell

Jonathan GS Koppell, Montclair State University's ninth president, is a nationally recognized scholar of policy, organization and management with a reputation as a visionary leader in higher education emphasizing public service and solutions-oriented engagement in the community.

Before taking office at Montclair State on August 2, 2021, Koppell served as dean of Arizona State University's Watts College of Public Service and Community Solutions and vice provost for public service and social impact, leading the nation's largest comprehensive public affairs college. He also led the College to significantly improve its student retention and graduation rates through new and innovative counseling and student-support initiatives.



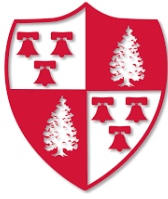
Known as one of the most entrepreneurial leaders at ASU, an institution that is widely regarded as one of the nation's most innovative universities, Koppell guided Watts College to add some 20 new degree programs, greatly expand its online offerings and global programs, launch a unique joint college in Hainan, China, and create the nation's first Public Service Academy. National rankings skyrocketed under his leadership with numerous programs now rated in the top 10 nationally.

Koppell is a firm believer that public universities play a fundamental role in advancing society. At ASU, Koppell built productive partnerships with community organizations and launched innovative programs to serve the public interest, increasing student access and success, advancing diversity among the faculty and college leadership, and greatly enhancing research expenditures and philanthropic support.

Koppell also brings to Montclair State a national reputation as a leading scholar of policy, organization and management. He earned doctoral and master's degrees in political science from the University of California - Berkeley and a baccalaureate degree in government from Harvard University. At ASU he held the endowed Lattie and Elva Coor Presidential Chair as Professor of Public Administration and Policy and is a Fellow of the National Academy of Public Administration. At Montclair State he is a tenured faculty member in political science.

Before becoming dean at ASU, Koppell was director of its School of Public Affairs. He began his academic career at Yale University, where he held faculty appointments in the School of Management and led the Milstein Center for Corporate Governance Performance.

President Koppell serves on the boards of several nonprofit organizations and has been a visiting scholar at the Brookings Institution, a Markle Fellow at the New America Foundation and a Fulbright Lecturer in Shanghai, China. He is the author of books and articles on global governance institutions, public-private hybrid organizations and corporate governance.



About Montclair State University

Montclair State University was founded in 1908, when Dr. Harry Sprague became the very first president of the institution. In 1927, the school was named the Montclair State Teacher's College after creating a 4-year bachelor's program in pedagogy, the first of its kind in the U.S. Later, it became known as Montclair State University as it began to merge with other schools in the area. Now, Montclair State is a public serving institution with more than 300 programs across 10 colleges and schools at all degree levels. The student-to-faculty ratio is 17 to 1 allowing for specialized and individualized attention for all students.

Montclair State University prides itself on being a Hispanic-serving institution (HSI) with more than 50% of the student body being part of underrepresented minority groups. The vibrant campus community is an extension of the greater communities that surround the university like Clifton, Paterson and Bloomfield. Recently, Montclair State University merged with Bloomfield College in an effort to create partnership and support the school's mission.

Montclair State's highly diverse students thrive in the institution's welcoming environment. Their graduation rates outperform state and national standards. The U.S. News & World Report ranks Montclair State University as seventh among national universities in graduation rate performance in 2022. Montclair is consistently recognized as one of the most inclusive and best value universities and ranked No. 21 in the country in social mobility.

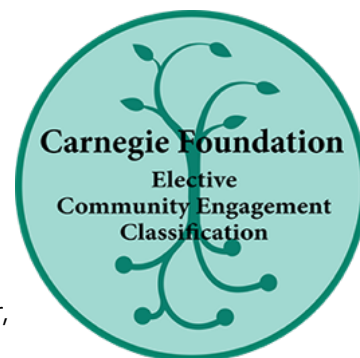
Among the faculty one will find winners of a MacArthur fellowship, Fulbright grants and Emmy awards, and NSF, NEH and NIH grants, among many other distinctions. Montclair State continues to grow its faculty and has launched dozens of new degree and certificate programs, while also offering more combined bachelor's and master's degree programs than any other university in New Jersey. The institution also boasts state-of-the-art facilities including a new 2,000-bed student residence and dining complex and cutting-edge technologies, such as online study opportunities, that match students' learning styles.



Montclair State University also recognizes that it sits on Lenapehoking, the land of the Lenape tribe. It recognizes that these lands are expropriated territory and continues to work to support this and other indigenous communities to prevent erasure and further displacement.

About the Center for Community Engagement

Montclair State has had a long history in working to integrate community engagement, including programs for students, staff, and faculty. In January 2015, President Susan Cole formally announced the creation of the Center for Community Engagement (CCE). Over the past six years, center staff has taken steps toward building a campus-wide Center that serves as a central hub connecting the campus to local communities. The Center works to maximize the University's status as a Community-Engaged Campus recognized by the Carnegie Foundation for the Advancement of Teaching.



Montclair State's commitment to engage beyond the campus is central to its mission as a public institution of higher education and is supported by numerous curricular and co-curricular units across campus. The Center, however, is the only unit on campus specifically tasked with engaging the University's rich academic, artistic and cultural resources in partnership within the community. Each year the Center engages over 1,000 students in partnership with 200+ community partners to seek solutions to real issues of public concern. The Bonner Program is one of the distinctive programs.

Community-engaged learning pedagogies such as service-learning and community-based research have been primary means through which the Center connects the campus to the community and where faculty and students put their learning and research into practice. Community-engaged learning not only provides students an opportunity to connect course content to real-world issues, but it also offers an invaluable window into the roles and responsibilities of citizenship in a democratic society—a core value of any liberal education.

Through capacity-building efforts of students, community partners, faculty, and staff, the CCE serves as a central hub connecting the campus to the local communities and the region. Today, the CCE houses a wide array of programs and projects that foster community engagement and democratic practice. In these initiatives educators, students, and community partners forge new ways to teach and learn together, through experiential education such as community-engaged learning and participatory action research. Curricular communities and programs like the Leadership Development through Civic Engagement minor offer pathways. So, too, do service initiatives such as the Bonner Leader Program, and the NJ COVID Service Corps. Each year, 30 faculty members also engage in seeking solutions to real issues of public concern, including through a two-year Community Engaged Teaching and Learning Fellowship. Some of the Center's key programs and initiatives include: the Bonner Community Engaged Learning Initiative, Bringing Theory to Practice, Community-Engaged Learning Program, EECO AmeriCorps Program, Leadership Development through Civic Engagement Minor, Montclair Community Farms, NJCSC AmeriCorps Program, Volunteer Center, NextGen Service Corps, and Charles J Muth Museum of Hinchliffe Stadium . You'll learn more about these initiatives at Bonner SLI.

About Montclair and the Surrounding Communities

When Montclair State University was founded in 1908, its campus was primarily located in Montclair, NJ, however, today's campus also extends into two neighboring townships: Little Falls and Clifton and also resides in Passaic and Essex Counties.

Montclair has a rich and diverse history. It was originally inhabited by the Lenape Native Americans, who called the area Watchung ("high hills") and Yantacaw ("place of the wood boundary"). The first European settlers were English colonists from Connecticut, who founded Newark in 1666 and extended their lands westward to the First Mountain. One of them, Azariah Crane, built a home in 1694 near the present intersection of Orange Road and Myrtle Avenue, and his descendants established a village called Cranetown in what is now the southern part of Montclair. In 1812, Cranetown became part of the newly formed Bloomfield Township, which also included the future towns of Glen Ridge and West Orange.

During the American Revolution, Montclair was a strategic location for observing the



movements of the British troops in the east. George Washington and the Marquis de Lafayette are said to have visited Cranetown briefly in October 1780. A boulder at the corner of Claremont Avenue and Valley Road marks the site of "Washington's Headquarters". In 1894, after a referendum, Montclair reincorporated as a town with a mayor-council form of government. By then, Montclair had become a diverse and prosperous community with a population of over 11,000. It had schools, churches, libraries, parks, clubs, newspapers, theaters, and businesses that catered to various needs and tastes.

In the 20th century, Montclair continued to grow and change with the times. It faced two world wars, the Great Depression, suburban sprawl, civil rights movements, urban renewal, environmental issues, and cultural shifts. It also developed a reputation for being an artistic and intellectual center with many writers, artists, musicians, actors, educators, and activists living and working in town. Some notable residents of Montclair include Stephen Crane (author), Thomas Edison (inventor), Yogi Berra (baseball player), Buzz Aldrin (astronaut), Olympia Dukakis (actress), Robert Blake (actor), Christina Ricci (actress), Stephen Colbert (comedian), and Bobbi Brown (makeup artist).

As of 2020, Montclair had a population of 40,921, making it the 60th-most-populous municipality in New Jersey. It is known for its historic architecture, its cultural demographic diversity, its progressive values, its vibrant downtown, its excellent schools, its scenic parks, and its proximity to New York City. It is also one of only three places in New Jersey designated as a "Preserve America Community" by the White House.

Students, staff, and faculty from Montclair State also engage locally in surrounding communities, especially Orange and Paterson. In fact, Montclair is working on a place-based partnership called the *One Square Mile* initiative in Paterson, one of NJ's most populous city which is home to a large immigrant population from around the globe. The city boasts more than 52 distinct ethnic groups. Its rapidly growing Bangladeshi American, Turkish American, Arab American, Albanian American, Bosnian American, Dominican American, and Peruvian American communities are among the largest and most prominent in the United States. About a quarter of its families live below the poverty line.

About The Theme



The 2023 Bonner SLI theme is **"Together Towards Tomorrow: Juntos Lo logramos."** These words celebrate the abilities and strengths of the Bonner community in service, community engagement, and social justice. The theme highlights the idea that we have connection and community through a network of colleagues, alumni, and professionals. As the Bonner national network, we can work together to build a better and more equitable future for the hundreds of communities we serve.

Montclair State University, as a Hispanic Serving Institution, strives to uplift the Bonner Common Commitments. At SLI, we'll feature the work of our community at Montclair State University, along with the Bonner Programs across the country, alumni, and local and national partnerships.

During the 2023 Bonner Summer Leadership Institute, we'll dive into a series of thrilling and interactive sessions and experiences throughout the four days of the conference as a way to reinforce the strength of our community and *Bonner Love*.

We are pleased to host 300 Bonner students, staff, faculty, and other individuals from 80 colleges, universities, and partner organizations across the Bonner Network at the conference. We have two incredible all-group sessions featuring Montclair's President, student keynotes, faculty, and community leaders involved in local and global place-based efforts to leverage campus-community engagement towards strengthen justice and equity. Choose from nearly 30 engaging elective workshops. Meet with representatives from graduate schools and national nonprofit organizations taking part in the Networking Fair. Don't miss our fun social events for administrators and students including a carnival, 1970s disco themed Bonner Prom, and administrator & faculty receptions. This year, we also offer a robust "Pathways to Public Service" track that can support administrators and faculty involved in the Bonner Community-Engaged Learning Initiative and Pathways Project.

We hope that everyone enjoys every moment of interaction, learning, and bonding. Because together as a network, **nosotros podemos lograr en la vida...we can achieve in life.**

The Bonner National Network



Meet People at SLI From:

- Allegheny College, PA
- Athens State University, AL
- Averett University, VA
- Bates College, ME
- Berea College, KY
- Berry College, GA
- Brown University, RI
- Carson-Newman University, TN
- Centre College, KY
- Christopher Newport University, VA
- Clark Atlanta University, GA
- College of Charleston, SC
- College of Saint Benedict/Saint John's University, MN
- Colorado College, CO
- Concord University, WV
- DePauw University, IN
- Earlham College, IN
- Emory & Henry College, VA
- George Mason University, VA
- Guilford College, NC
- High Point University, NC
- IUPUI, IN
- Lindsey Wilson College, KY
- Macalester College, MN
- Mars Hill University, NC
- Maryville College, TN
- Middlesex College, NJ
- Montclair State University, NJ
- Morehouse College, GA
- Nazareth College, NY
- Notre Dame of Maryland University, MD
- Oberlin College, OH
- Rhodes College, TN
- Rider University, NJ
- Rollins College, FL
- Rutgers University - New Brunswick, NJ
- Rutgers University - Camden, NJ
- Sewanee: The University of the South, TN
- Siena College, NY
- Simmons University, MA
- Spelman College, GA
- Stetson University, FL
- The College of New Jersey, NJ
- University of Hawai'i at Hilo
- University of Houston, TX
- University of Lynchburg, VA
- University of Nevada, Reno
- University of North Carolina - Wilmington
- University of Richmond, VA
- University of Tampa, FL
- Ursinus College, PA
- Wagner College, NY
- Warren Wilson College, NC
- Washburn University, KS
- Washington and Lee University, VA
- Widener University, PA
- Wilkes University, PA
- Wofford College, SC

About The Bonner Foundation

The Bonner Foundation is an independent, private nonprofit organization that works in partnership with colleges, universities, and nonprofits across the country. Founded in 1990, the Bonner Foundation launched its Bonner Scholar Program that year with Berea College in Kentucky. Many of the institutions that started the Bonner Program that decade were located in the Appalachian region, in part to carry on the legacy of Corella and Bertram Bonner. With the support of national funding from the Corporation for National Service and its AmeriCorps initiative, the Bonner Foundation launched the Bonner Leader Program. To date, **Bonner Programs** have graduated more than 18,000 alumni across our national network. Each year, these programs, offered by more than 75 colleges and universities engage more than 3,000 undergraduates in a four-year developmental experience of service and learning. With student leadership at the center, the Bonner Program serves as a vehicle for student development, community engagement and impact, and institutional change.

In addition to the Bonner Program, the Foundation offers funding to nonprofit programs primarily in New Jersey who are working to alleviate hunger and poverty. As such, the mission reads: *Through sustained partnerships with colleges and congregations, the Corella and Bertram F. Bonner Foundation seeks to improve the lives of individuals and communities by helping meet the basic needs of nutrition and educational opportunity.* Our Common Commitments express the values we explore and share as an organization, national network, and community

- **Civic Engagement:** exploring and participating intentionally in multiple forms and dimensions of engagement including service, political engagement, social action, and public policy;
- **Community Building:** creating and sustaining a vibrant community of place, personal relationships, and shared interests
- **Diversity:** respecting the many different dimensions of personal and group identities (such as ability, age, class, ethnicity, faith, gender, leadership, race, religion, political views) and creating opportunities for dialogue, learning, and work on equality and equity
- **International Perspective:** supporting international and global understanding to participate successfully in an increasingly interconnected world across national boundaries
- **Social Justice:** understand and advocate for fairness, impartiality, and equity to address and find solutions for systemic disparities
- **Spiritual Exploration:** reflect on and explore personal beliefs while respecting the spiritual and ethical practices and values of others
- **Wellness:** nurturing the development, resilience, thriving and sustenance of the whole person and of communities through self and community care

We encourage people to learn more about the inspiring work that is happening across the network not only within the Bonner Program but also in these critical current initiatives:

- **The Racial Justice Community Fund:** teams of campus and community leaders working to address disparities and promote greater anti-racism and equity.
- **The Community-Engaged Learning Initiative and Pathways Project:** funding and support for engaging faculty, students, and administrators across the institution.

Teams from any institution can put together projects and apply for funds from their own endowed programs or the Foundation.

Wednesday, May 31

Time	Activity	Space/Location
2:00 pm - 5:00 pm	Registration & Check In: Get your housing assignment, printed program, name tag, and other important information, including Wi-Fi access. Snap pics at the SLI Photo Booth.	Blanton Residence Hall Atrium
5:30 pm - 7:00 pm	Dinner: Welcome to Montclair Join us for dinner to kick off SLI 2023!	Sam's Place
7:00 pm - 8:30 pm	All Group Session: "Together Towards Tomorrow: Juntos Lo Logramos!" In this inspiring opening session, you'll hear how higher education can be a tool for making positive social change in communities. The session features administrators, students, and leaders from Montclair and the local community. See speaker bios on pages 18-19. Speakers and emcees include: <ul style="list-style-type: none"> • Jonathan Koppell, President at Montclair State University • J.P. Liddy, Bonner Scholar, Class of 2026, Oberlin College • Mariana Luna Martinez, Bonner Leader, Class of 2024, and Trustee at Montclair State University • Nellie Pou, NJ State Legislator for 35th District • Krystal Woolston, Director of the Bonner Program at Montclair State University • Emceed by Liz Brandt, Director of Community Engagement at the Bonner Foundation 	7th Floor University Hall Conference Center
9:00 pm - 11:00 pm	Student Social Activities: Welcome Wednesday Welcome to the 2023 SLI! After a long day of travel and diving in, come join a night of relaxing. Let us vibe, make s'mores, join an ice breaker, sit around the Bond'fire , and make friends! Still have some energy for fun? Show your vocal skills by joining karaoke where you can sing along or shine on your own.	Behind the Recreation Center
9:00 pm	Administrators & Faculty Networking & Reception Administrators, faculty, national and graduate school partners, and Bonner alumni! Join us for networking among colleagues and friends while enjoying beverages and snacks.	University Hall Courtyard

Thursday, June 1

Time	Activity	Space/Location
7:30 am - 8:45 am	Breakfast	Sam's Place
9:00 am - 10:30 am	<p>All Group Session: "Investing in Place and People: Local and Global"</p> <p>Speakers will share their experience and perspectives about place-based initiatives and the roles that civic and community engagement, public service, and sustained partnerships can have within communities. See speaker bios on pages 20-22. Speakers and emcees include:</p> <ul style="list-style-type: none"> • Baye Adolfo-Wilson, CEO of BAW Development and Hinchliffe Stadium Neighborhood Restoration Project • Ali Boak, Director of Montclair Global Center for Human Trafficking • Keonna Elliott, Bonner Leader '26, High Point University • Mimi Feliciano, Board Member with Montclair Global Center for Human Trafficking and Montclair Leadership Team • Jonathan Koppell, President at Montclair State University • Kate McCaffrey, Professor at Montclair State University and founder of United Tastes of America • Bryan Murdock, Associate Vice President for Community Partnerships at Montclair State University • Emceed by Rachayita Shah, Director of Community Engaged Learning and Daniela Chica, AmeriCorps Director at Montclair 	7th Floor University Hall Conference Center
10:30 am	Snack Break! Grab a coffee and a snack in the rear of the Conference Center or in the School of Business as you head to role-based track sessions.	
11:00 am - 12:30 pm	<p>Role-Based Tracks</p> <p>Pathways to Public Service Track: "Reflections on Our Movement: Transforming People, Campuses, and Communities"</p> <p>All administrators, staff, and faculty are invited to join this plenary. See speaker bios on pages 26-28.</p> <ul style="list-style-type: none"> • Kayla McKay, Bonner Leader, Class of 2024, Siena College • Bryan Murdock, Associate Vice President for Community Partnerships at Montclair State University • Caryn McTighe Musil, Author of <i>A Crucible Moment</i> • Carol Geary Schneider, Senior Advisor to the Civic Learning and Democratic Engagement (CLDE) Coalition • Kathie Shiba, Assistant Dean for Institutional Equity and Professor of Psychology at Maryville College • Emceed by Ariane Hoy, Vice President at the Bonner Foundation, and Paul Schadewald, Senior Program Manager for the Paradigm Project at Bringing Theory to Practice 	7th Floor University Hall Conference Center

Thursday, June 1

Time	Activity	Space/Location
11:00 am - 12:30 pm	<p>Role-Based Tracks (Continued)</p> <p>Student Track: "Past: My Bonner Experience"</p> <p>All Bonner students are invited to join this interactive session where students will reflect on, deepen their understanding, and practice articulating their Bonner journey. Facilitors include:</p> <ul style="list-style-type: none"> • Rashel Bernal-Reyes, National Bonner Intern and Bonner Leader at Rutgers University-New Brunswick • Jeniffer Gonzalez Reyes, Program Manager at the Bonner Foundation • Andy Huerta, National Bonner Intern and Bonner Leader at Rider University • Bryan Wood, National Bonner Intern and Bonner Scholar at The College of New Jersey • Chloe Vereen, National Bonner Intern and Bonner Scholar at Berry College 	School of Business 101
12:30 pm	Lunch	Sam's Place
2:00 pm - 3:30 pm	<p>Elective Workshops: Block 1</p> <p>Attend one of the following workshops that feature models and best practices from across the national network and partners to take home. See pages 36-38 for workshop descriptions and locations.</p> <ul style="list-style-type: none"> • Brains and Budgets: How to Produce Great Science at any Resource-Limited University • Campus-Wide Community Engaged Learning for First-Year Students: Program Development and Implementation • Caption This!: Branding, Outreach, and Maintaining Community Partners • Community: Rebuilding After The Pandemic • Developing Inclusive Postsecondary Educational Opportunities for Students with Intellectual Disabilities: From a Service-Learning course to an Academic Program • Empower Your Community: Strategies for Successful Community Fund Grantmaking • Life After Bonner: Creating A Career in Public Service (Yes, It's Possible!) • Reviewing and Strengthening the CLDE Coalition's Draft Framework for College Civic Learning • Servant Leadership Development: A Progress Report on your Participation in Montclair's National Science Foundation study • The New Now: How to Boost Bonner Morale 	

Time	Activity	Space/Location
3:30 pm	Break! Grab a coffee and a snack on the first floor of the School of Business or the University Hall Lobby.	
4:00 pm - 5:30 pm	<p>Elective Workshops: Block 2</p> <p>Join one of the workshops offered in this block featuring models and best practices from across the national network and partners to take home. See pages 40-42 for workshop descriptions and locations.</p> <ul style="list-style-type: none"> • Bonner Accountability: Creating a System of Support through Restorative Justice • Bon Voyage Bonners! Best Practices for Helping Bonner Students' Study Abroad • College Students Can be the Change Makers in the Fight Against Human Trafficking • Connecting Humans and Telling Stories (C.H.A.T.S.) • Empowering Changemakers: Integrating Social Action into Bonner Programs and Campuses • Enneagram: Beyond a Personality Test • How Do We Establish Welcome and Support in 2023 and Beyond? • Queering Spaces of Service-Learning and Civic Engagement • Round Table: Help Shape IARSLCE's Global Research Agenda • Student-Led Course Development: How to Leverage Student Leadership to Build Lasting Engagement on Your Campus 	
5:30 pm	Dinner	Sam's Place
9:00 pm - 11:00 pm	<p>Social Activities: Throwback Thursday</p> <p>Are you ready for a fun night of carnival themed games, food, and prizes? At this event, will have the opportunity to swim with the mermaids, play carnival games, and engage in a friendly competition of Battle of the Bonners. Make sure to bring a bathing suit, closed toe shoes, and a fun spirit with you!</p>	Student Recreation Center Basketball Courts and Pool
9:00 pm	<p>Administrators' Reception</p> <p>The fun is just beginning! Enjoy snacks, beverages, and social time among Bonner staff, faculty, alumni, and administrators.</p>	University Hall Courtyard

Friday, June 2


Time	Activity	Space/Location
7:30 am - 8:45 am	Breakfast	Sam's Place
9:00 am - 10:30 am	<p>Role-Based Tracks All Administrators, Faculty, and Partners: Bonner Business followed by Breakouts All administrators, staff, and faculty, please join us for the first 40 minutes of this session for “Bonner Business” where you’ll hear key announcements and updates from Bonner Foundation Staff. Then, choose from one of the following breakout sessions:</p> <ul style="list-style-type: none"> • Pathways for Public Service: “Stewards of Place and Institutional Priorities” Join faculty and administrators connected with the community-engaged learning and Pathways Project to share and discuss how deep issue-based work is being connected with institutional and community priorities, as well as new sources of funding. • Administrators: “Developing as a Community Engagement Professional” Join a conversation about your own professional development. You’ll have a chance to reflect on your goals and competencies, and to plan on ways to advance in your career. • Students: “Present: Strategies for Taking Action” All students, please join us for this engaging session where you’ll learn and discuss effective strategies for Bonner students to collaboratively make change in their communities and campuses. Featuring guest presenters, Francesca McDaniel and Aleisha Sawyer, Bonner Scholars at Spelman College 	<p>All start in University Hall 1070</p> <p>University Hall 1070</p> <p>University Hall 1060</p> <p>School of Business 101</p>
10:30 am	Coffee Break! Grab a coffee and a snack in between sessions <i>as you head to workshops</i> . Snacks will be in the University Hall Lobby.	

Time	Activity	Space/Location
11:00 am - 12:30 pm	<p>Elective Workshops: Block 3</p> <p>Join one of the interesting workshops offered in this block featuring models and best practices from across the national network and partners to take home. See pages 44-46 for workshop descriptions and locations.</p> <ul style="list-style-type: none"> • An Innovative Strategy for Boosting Student Buy-In: Negotiate a Contract • Building University-Community Partnerships: The Case of the Harm Reduction Initiative • Campus wide Engagement: Using What Ya Got to Get What Ya Want • Community-Engaged Learning as Pathway to Scholarship • Establishing a Campus-wide Community Engagement Council: Initial Steps • Global Perspectives → Personal Transformation → Social Change • Introduction to Human Trafficking: Comprehensive Campus Response • Making Accessible the Visual Arts: Audio Description for the Blind and Low Vision Spanish-Speaking Community • Social Justice and Public Health • Streamline and Thrive: Building an Integrated Management System for Bonner Programs and Campus Centers • Translating Your Service to Future Employers • Tips for Submitting a Strong Graduate School Application 	
12:30 pm	Lunch	Sam's Place
2:00 pm - 3:00 pm	<p>Networking Fair with Bonner Graduate School and National Partners</p> <p>Did you know the Bonner Foundation has partnerships with graduate schools from public health to law that offer guaranteed scholarships for Bonner students and alumni? Head to the University Hall Foyer to check out these opportunities and more (fellowships, summer of service) with our graduate schools and national partners attending this year's SLI. See pages 48-52 to read more about the partner organizations and their representatives.</p> <p>Resume Review</p> <p>Do you wonder how to highlight your Bonner and professional experience on your resume? Want to speak with a Bonner alum, staff, or graduate school representative to get their advice? Grab your resume (laptop or hard copy) and find a resume coach in the lecture hall next to the University Hall Foyer.</p>	<p>University Hall Foyer</p> <p>University Hall 1010</p>

Friday, June 2...continued

Time	Activity	Space/Location
3:15 pm - 4:45 pm	<p>Role-Based Tracks</p> <ul style="list-style-type: none"> <p>Pathways for Public Service: “Developing Civic Minded Professionals: A Showcase of Pathways and Strategies” We'll highlight examples of certificates, minors, concentrations, majors, and career pathways that include co-curricular and curricular activities. We'll also plan and preview useful strategies for mapping curricular and co-curricular activities at your institution.</p> <p>Administrator Track: “Shape the Future - IARSLCE Research Agenda” Participants will have the opportunity to engage in a round table discussion to help shape the future of research in our field. This session is facilitated by Rachayita Shah, Community-Engaged Scholarship Director, in partnership with International Association of Service Learning and Community Engagement (IARSLCE).</p> <p>Student Track: “Future: Bonner and Beyond” As you look to your future, come learn from Bonner alumni across a multitude of career fields and educational sectors. Unlike most panels, in this session you'll have the opportunity to breakout into smaller groups to have deeper conversations with the alumni and other students. <i>See pages 34-35 for list of alumni.</i></p> 	<p>University Hall 1070</p> <p>University Hall 1050</p> <p>SBUS 101</p>
5:00 pm	<p>Dinner Off Campus Campus teams are welcome to explore Montclair and the surrounding communities using their own transportation to find a dinner spot. <i>See pages 60-61 to read more about restaurants and things to do.</i></p>	
8:30 pm - 11:00 pm	<p>Social Activities: Funky Friday Put on your boogie shoes. It's time to dance the night away at our 70s disco Bonner Prom. Featuring a best dressed contest, photobooth, and much more. Because everyone loves a little funk.</p>	Student Center Ballroom
8:30 pm	<p>Administrators' Reception Enjoy snacks and beverages during our last night together at the 2023 SLI. Join faculty, staff, alumni, and administrators for some fun. Don't forget to show up for Prom!</p>	Montclair Center for Community Engagement (Cole Hall -Room 340/348)

Saturday, June 3

Time	Activity	Space/Location
8:00 am - 10:00 am	<p>Breakfast & Open Space Conversations</p> <p>Over breakfast, join a table and participate in one or more open space discussion(s), informal conversations utilizing open space principles. <i>See page 58 for open space principles.</i></p> <p style="text-align: center;">Sign up to facilitate a discussion using the QR code.</p> 	Sam's Place
10:00 am	Pack Up! Pack up then meet at University Hall 1070 for the final session of SLI.	
11:00 am - 12:30 pm	<p>All Group Closing Session</p> <p>Join in a reflective practice to process what we've learned throughout the week!</p>	University Hall 1070
12:30 pm - 2:00 pm	<p>Check Out</p> <ul style="list-style-type: none"> • Please drop your swipe card at the Blanton Hall Information Desk and follow check out procedures. 	



All-Group Sessions

Together Towards Tomorrow: Juntos Lo Logramos!

Wednesday, May 31 at 7:00 pm to 8:30 pm

In this inspiring opening session, you'll hear how higher education can be a tool for making positive social change in communities. The session features administrators, students, and community leaders from Montclair, the local community, and wider Bonner Network.



Jonathan Koppell (He/Him), President at Montclair State University

Dr. Jonathan GS Koppell, Montclair State University's ninth president, is a nationally recognized scholar of policy, organization and management with a reputation as a visionary leader in higher education emphasizing public service and solutions-oriented engagement in the community. Before taking office at Montclair State on August 2, 2021, Koppell served as dean of Arizona State University's Watts College of Public Service and Community Solutions and vice provost for public service and social impact, leading the nation's largest comprehensive public affairs college. He also led the College to significantly improve its student retention and graduation rates through new and innovative counseling and student-support initiatives.



J.P. Liddy (He/Him), Bonner Scholar at Oberlin College

J.P. is a rising sophomore Bonner Scholar at Oberlin College where he intends to major in creative writing. JP had a transformative first year in the Bonner Program where he served with America Reads and the local food pantry. In addition to his passion for Bonner, JP loves to write and is working on his second novel. This summer, JP will serve as the Bonner Summer Intern for the Oberlin College Bonner Scholar Program. As a student keynote speaker, J.P. hopes to inspire everyone to elevate the conversations we have with ourselves and with each other to transform ourselves and our world.



Mariana Luna Martinez (She/Her), Bonner Leader and Student Trustee at Montclair State University

Mariana is a junior Bonner Leader majoring in Biology with a minor in Leadership Development through Civic Engagement at Montclair State University. At Montclair, she is an active member of the Honors Program, Pre-Medical Club, Presidential Scholars Program, Student Government Association, and was appointed as a student trustee in 2022. As a Bonner Leader, Mariana serves as Intern of Partnerships where she strengthens and builds current and perspective partnerships for the Center for Community Engagement.



Nellie Pou (She/Her), New Jersey State Senator for 35th District

Senator Pou was the first woman and the first Latina elected to represent the 35th Legislative District. She was elected to the Senate in 2011 and re-elected in 2013, 2017, and 2021. She served in the Assembly from Jan. 29, 1997, when she was sworn to fill a vacancy, until her rise to the Senate. January 2022, Senator Pou became part of the Senate Leadership as Senate Majority Caucus Chair and currently serves as Chair of the Senate Commerce Committee, Vice-Chair of the Senate Judiciary Committee, and Chairwoman of the New Jersey Legislative Latino Caucus. Throughout the years, Senator Pou has sponsored an array of legislations, many of which she has navigated into law ranging from social justice and human rights, while also working with colleagues to ensure more diversity on the NJ Supreme Court.



Krystal Woolston (She/Her), Assistant Director, Center for Community Engagement at Montclair State University

Dr. Krystal Woolston is the Assistant Director of the Center for Community Engagement at Montclair State University where she directs the Bonner Leader program, co-coordinates the Community-Engaged Teaching and Learning Faculty Fellows program and assists with oversight of public service programs including AmeriCorps program and the community-engaged learning program. She is passionate about getting students involved in volunteering, civic engagement and community leadership. She has a PhD in Family Science and Human Development where her research focuses on the impact of clergy-perpetrated sexual abuse and institutional betrayal on survivor's spirituality and post-traumatic growth. She hopes to make an impact on how faith institutions respond to abuse.



Liz Brandt (She/Her), Director of Community Engagement at Bonner Foundation

Liz designs and manages Foundation initiatives for supporting Bonner Program member campuses and campus-wide community engagement. She supports planning of national conferences, resource and curriculum development, conducts campus visits, cultivates and manages strategic partnerships with graduate schools, and identifies and shares best practices and models. As a community engagement professional in higher education, Liz strives to build just and equitable communities by transforming higher education institutions to be agents of collaborative social change and educating and preparing students for civically engaged lives. Liz holds a Bachelors of Arts in Anthropology and Sociology from Centre College in Danville, KY where she was a Bonner Scholar. She completed a Masters of Science in Higher Education with concentrations in Administration & Leadership and Educational Policy from Drexel University where her master's thesis focused on understanding the pathways and barriers faced by Community Engagement Professionals (CEPs).

Plenary Sessions

Investing in Place and People: Local to Global

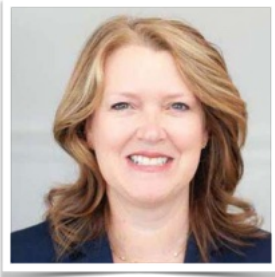
Thursday, June 1 at 9:00 am to 10:30 am

Montclair, like other institutions in the Bonner Network, has cultivated a strong focus on place-based work, relationships, partnerships, and impact. Speakers will share their experience and perspectives about the roles that civic and community engagement, public service, and sustained partnerships can have within communities. Speakers will highlight signature projects like the One Square Mile Initiative, Global Center for Human Trafficking, Hinchliffe Stadium, United Tastes of America, and others. Additionally, the session aims to offer relevant insights about how institutions support the development of effective change makers and develop campus-wide pathways for engagement.



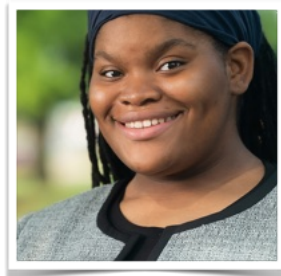
Baye Adofo-Wilson (He/Him), CEO of BAW Development and Hinchliffe Stadium Project

As CEO of BAW Development, Adofo-Wilson is overseeing the redevelopment of the Hinchliffe Stadium Neighborhood Restoration Project in Paterson. The museum and learning center will highlight the history of Negro League Baseball and the stadium's legacy as a cultural touchstone. The Charles J. Muth Museum of Hinchliffe Stadium, as it will be known, will serve as an educational and community hub for the city of Paterson and Montclair State students and faculty. The city and university are committed to strengthening a relationship-based approach to community development that focuses on building trust and meaningful connection. In addition to benefits for community members, the partnership will provide additional experiential learning opportunities for Montclair students to solve pressing challenges and make a difference.



Ali Boak (She/Her), Director of Montclair Global Center for Human Trafficking

As the Director of the Global Center on Human Trafficking located within the College of Humanities and Social Sciences at Montclair State University, Ali is a passionate leader in the global movement to end human trafficking. For more than 25 years, she has worked alongside survivors of all forms of trafficking to develop innovative, survivor driven approaches to prevent and address human trafficking across the United States, Africa, Eastern Europe, Latin America, and Asia. Committed to training and supporting the next generation of human rights leaders, Ali served as the International Development and Human Rights Leader-in-Residence at the Colin Powell School for Civic and Global Leadership at the City College of NY where she trained, taught, mentored and supervised fellows as they executed high impact service projects, conducted research, and raised awareness about critical international development and/or human rights issues. Ali graduated *Magna Cum Laude* from the State University of New York at Albany with a B.A. in Political Science, International Affairs concentration and earned a Masters of Public Health (MPH) from the Mailman School of Public Health at Columbia University.



Keonna Elliott (She/Her), Bonner Leader at High Point University

Keonna Elliott is a rising sophomore at High Point University where she is striving for a Bachelors of Science in Computer Science with an emphasis on cybersecurity . As a Bonner Leader, she works with The City of High Point's Community and Neighborhood Development Division. In this role, Keonna has collaborated with the West End, Burn's Hill, Oakview, and Highland Mills neighborhood associations.



Mimi Feliciano (She/Her), Board Member and Leadership Team at Montclair State University

Mimi Feliciano is Founder and CEO of FEM Real Estate, a Real Estate Investment Company, based in Montville, New Jersey and of Connect for Freedom, a nonprofit. She is a passionate advocate around issues of global trafficking. Mimi works with The Global Center on Human Trafficking at Montclair State University as its Board Chair. She is also active as a Board Member for the Feliciano School of Business and Center for Entrepreneurship. She is a recipient of numerous awards including the Top 25 Leading Women Entrepreneurs in 2014 and Best 50 Women in Business.



Jonathan Koppell (He/Him), President at Montclair State University

Jonathan GS Koppell, Montclair State University's ninth president, is a nationally recognized scholar of policy, organization and management with a reputation as a visionary leader in higher education emphasizing public service and solutions-oriented engagement in the community. Before taking office at Montclair State on August 2, 2021, Koppell served as dean of Arizona State University's Watts College of Public Service and Community Solutions and vice provost for public service and social impact, leading the nation's largest comprehensive public affairs college. He also led the College to significantly improve its student retention and graduation rates through new and innovative counseling and student-support initiatives.



Katherine McCaffrey (She/Her), Anthropology Professor and founder of the United Tastes of America at Montclair State University

Dr. Katherine McCaffrey, professor, received her PhD in anthropology from the Graduate Center of the City University of New York. Interested in a public facing anthropology that engages contemporary problems, Dr. McCaffrey has conducted research on a movement to remove a military live fire range in Vieques, Puerto Rico and subsequent struggles for public health and environmental remediation. Her more recent participatory action research in Orange, New Jersey looks at asset-based community development efforts to resist gentrification and displacement. With Melina Macall, she co-founded a non-profit organization, The United Tastes of America, that draws on her anthropological toolkit to welcome resettled refugees, bridge cultural divides, and fight xenophobia through shared meals. She teaches classes on Latin America, the Twentieth Century, and Building Sustainable Communities.



Bryan Murdock (He/Him), Associate Vice President for Community Partnerships at Montclair State University

Bryan Murdock has more than thirty years of experience in program administration and management. He is the founding director of the Center for Community Engagement at Montclair State University where he's responsible for the administration of numerous community-engaged programs, projects and initiatives that engage approximately 1,000 students; collaborate with faculty from the University's five colleges and school; and partner with 200 community- and faith-based organizations, school districts, governmental agencies, and civic organizations. Bryan develops and implements strategies focused on maximizing the University's community engagement priorities and its role as a responsible institutional citizen in the community.

Emcees



Daniela Chica (She/Her), AmeriCorps Program Director at Montclair State University

Daniela Chica is the Program Director for the New Jersey Covid Service Corps at the Center for Community Engagement. Daniela graduated from Rutgers University, with a Bachelor of Arts in Psychology and Philosophy and a minor in Asian Studies. She graduated from Montclair State University with a Master of Arts in Clinical Psychology with a Forensic concentration and from St. Elizabeth University with a Master of Arts in Counseling Psychology. Daniela hopes to continue working with the community to strengthen partnerships and to promote programs that consider all aspects of public health.



Rachayita Shah (She/Her), Community-Engaged Learning Director at Bonner Foundation

Dr. Rachayita Shah brings a rich background and teaching experience in curriculum and instructional design. Her work at Bonner includes designing faculty development curriculum and conducting research about the program's impact. She earned a doctorate from Florida Atlantic University's (FAU) Ph.D. program in Curriculum and Instruction. Rachayita earned her Bachelor's and Master's degrees in English Literature from India. Before joining the Bonner Foundation, she worked with FAU as Visiting Instructor and taught multiple courses focusing on diversity, multicultural education, human rights, and social justice. She also worked as Program Manager at Florida Atlantic University's (FAU) Center for Holocaust and Human Rights Education, where she facilitated teacher professional development, provided curriculum consultations to K-12 educators, and managed Holocaust and human rights-oriented events. As a member of the Florida Department of Education Commissioner's Task Force on Holocaust Education, she served on curriculum writing team for integrating the content of the Holocaust in middle school civics lessons.

Notes

A Guide to Tags

As always, SLI programming features a wide range of topics. They are intended to build the knowledge and skills of students, staff, faculty, and partners who are present. The Montclair and Foundation team especially cultivated role-based tracks and elective workshops with this in mind. You'll find workshops and tracks tagged with icons by key knowledge or skill areas they address on the pages that follow. While the programming is open to anyone, icons point out key sessions for Bonner administrators, student leaders, and faculty and staff part of the Community-Engaged Learning Initiative and Pathways Project.



ADMINISTRATORS

These sessions especially include professional development for Bonner Coordinators, Directors, and center directors. These build a range of knowledge and skills associated with leading centers and programs.



COMMUNITY-ENGAGED LEARNING & PATHWAYS

These sessions are designed to especially support campuses involved in the Bonner Community Engaged Learning Initiative and Pathways Project. The sessions will enrich the knowledge, skills, and approaches of campus leaders whose work and resources can also help drive and inform institutional change and the success of our work in civic engagement and higher education.



STUDENT LEADERS

These sessions especially include skill, knowledge, and professional development for Bonner students, including Senior Interns, Congress Representatives, and students involved in Bonner Leadership Teams and other roles. They build knowledge and skills associated with a range of roles within the Bonner Program, on campus, and within service.



Key Initiatives and Dates

Here's a helpful reminder about upcoming initiatives and deadlines. We'll discuss this and more at Bonner Business.

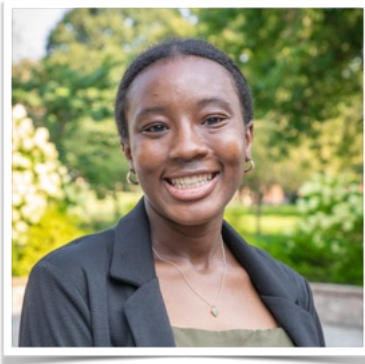
- **Community-Engaged Learning Initiative Grants:** If applicable, please submit completed 2022-23 Year-End narrative and budget reports by Friday, July 14, 2023. More information forthcoming about the 2023-24 Request for Proposal.
- **Racial Justice Community Fund Grants:** If applicable, please complete the Year-End Report for the 2022-23 Bonner Racial Justice Grant including the narrative, budget report, and other attachments. We ask that you submit your annual report by August 1, 2023. More information forthcoming about the 2023-24 Request for Proposal.
- **2023 Summer 2023 Institute on Teaching Social Action on June 6-8, Virtual:** This three-day virtual institute will introduce faculty and staff to an experiential learning approach for incorporating social action campaigns into either a semester-long course or co-curricular workshop series. In this transformative experiential learning model, students develop and launch a social action campaign of their choosing during the semester the course is taught.
- **2023 Planning Retreat for Bonner Meetings on June 7-9, Virtual:** The retreat is designed to help campus teams develop a robust meeting calendar for 2023-2024 that supports students' developmental journey in community-engaged learning.
- **2023 Community Partnership Planning Retreat on June 14-16, Virtual:** This retreat is designed for campus teams to work together and develop a community partnership management calendar for the upcoming academic year that will support Bonner Program and broader campus-wide community partnerships.
- **2022-23 Annual Reports Due on June 15:** The 2022-23 Bonner Annual Report asks campuses to share progress on your goals this year and your plans for next year, as well as a range of other information.
- **2023 New Bonner Staff Orientation on July 30-August 2 in Princeton, NJ:** This four-day orientation is designed to support new staff and faculty who are closely connected to a Bonner Program or working to launch a new one at their institution. If you have never attended the New Bonner Staff Orientation, we encourage you to do so. You'll have a chance to learn about the fundamentals and best practices for a comprehensive program tied to student success, community engagement, and campus-wide involvement.
- **2023 Fall Bonner Network Staff Meeting at the Claggett Center on November 5-8 in Adamstown, MD:** Save the date for the annual Fall gathering for Bonner staff, faculty, and administrators in the Bonner Network. You'll participate in learning and sharing around effective Bonner Programs, campus-wide engagement, institutional change, and more.

Pathways to Public Service Track

Thursday, June 1 at 11:00 AM to 12:30 PM

“Reflections on Our Movement: Transforming Lives, Campuses, and Communities”

All administrators, staff, and faculty are invited to join this plenary session featuring national field leaders to discuss how we advance civic and community engagement at our institutions and in our field more broadly. **Located in the Conference Center on the seventh floor of University Hall.**



Kayla McKay (she/her), Bonner Leader, Class of 2024, at Siena College

Kayla McKay is a rising Senior Bonner Service Leader at Siena College. She is majoring in Health Studies and earning a Certificate in Community Development, with courses that link with her Bonner Program pathway. Kayla applies her interests and skills in health through her service work, including with the FOCUS Churches of Albany Food Pantry and podcast creator for Birthnet. She has earned status as a Certified Peer Health Educator from NASPA. As a student leader with Academic Community Engagement, she plans service days, is responsible for holding students accountable in the program, helps support the recruitment process of new Bonners, and

organizes special events to mobilize other volunteers. With a peer, Kayla is also completing a team-based capstone focused on food and health that she will share. Kayla has been on the Dean's List since 2021. Her post-graduate plans include pursuing a Masters's Degree in Nursing.



Caryn McTighe Musil (she/her), Distinguished Fellow at the America Association of Colleges and Universities

Dr. Caryn McTighe Musil is an independent consultant who has had a distinguished career as a professor, nonprofit executive, educational consultant, scholar, and public speaker. Her areas of expertise include women, diversity, equity and inclusion, curriculum and faculty development, institutional change, and civic learning and democratic engagement. In July 2020, Dr. Musil retired from AAC&U after nearly three decades, having served in senior-level positions including senior vice president and acting president. She was project director

for more than two dozen national and global projects involving hundreds of colleges and universities. In recognition of her leadership within the association and her outstanding contributions to general and liberal education, Dr. Musil was named a Distinguished Fellow of AAC&U. Dr. Musil is lead author of *A Crucible Moment: Civic Learning and Democracy's Future*, the national report, released at the White House in 2012, calling on higher education to invest more in preparing students to participate responsibly in a diverse US democracy. Caryn is a graduate of Duke University.



Carol Geary Schneider (she/her), President Emeritus of the American Association of Colleges and Universities and Senior Advisor to the Civic Learning and Democratic Engagement Coalition

Dr. Carol Geary Schneider is President Emerita (1998-2016) of the Association of American Colleges and Universities (AAC&U) and a Fellow with Lumina Foundation where she is working on initiatives related to equitable access to high quality learning. During her AAC&U presidency, the association became widely recognized as a powerful force and resource for strengthening the quality of student learning in college for all students and especially those historically underserved in U.S. higher education. Dr. Schneider has published extensively on all the major areas of her educational work and is frequently cited both in the higher education and national press (see [here](#) for writings and speeches). She is a graduate of Mount Holyoke College; studied at the University of London's Institute for Historical Research and earned the Ph.D. in history from Harvard University. Since the fall of 2020, Schneider devoted most of her time to the formation of a new college civic learning initiative, titled the Civic Learning and Democracy Engagement Coalition (CLDE). The CLDE goal is to ensure that making college-level civic and democracy learning expected, inclusive, and empowering for today's diverse learners.



Kathie Shiba (she/her), Assistant Dean for Institutional Equity and Professor of Psychology at Maryville College

Dr. Kathie Shiba, originally from California, has been at Maryville College since 1994. As a teacher, scholar, researcher, and world citizen, she has traveled to Austria, Mexico, VietNam, Japan, Brazil, Canada, Yellowstone, and the Grand Tetons. Kathie has taught courses on The Intersectionality of Women's Experiences, Road to Justice (civil rights tour of the Southeast), First Year Seminar that focused on Food, and Our Rights and Responsibilities as US Citizens (an interdisciplinary sophomore-level course). She currently co-teaches a FYE course that Bonner Scholars at Maryville take. Kathie is a long-time practitioner of community engaged learning and community-based research. In fact, she participated in an early initiative with the Bonner Foundation and a Learn & Serve America grant, working with other faculty at Maryville College through Just Connections. Kathie earned a bachelor's at California State University and master's and doctoral degrees at University of California, Riverside.



Bryan Murdock (He/Him), Associate Vice President for Community Partnerships at Montclair State University

Bryan Murdock will also speak again in this session, sharing perspectives on the evolution of Montclair State University's community engagement work. See Bryan's biography on page 22.



Ariane Hoy (she/her), Vice President at the Bonner Foundation

Like many Bonners, Dr. Ari Hoy found a career in engagement through her youth experience in community service. Since 2004, Ariane leads Bonner's meeting planning, resource development, and strategic initiatives to promote program quality and deeper, more pervasive campus-wide engagement. Ariane serves on the national advisory boards for the American Association of College and Universities' VALUE Initiative and National Advisory Committee of the Carnegie Community Engagement Classification. She is a member of the Project HERE (Higher Education Reparations Engagement) national task force and the advisory board for the CLDE Coalition. Ari has researched and authored many publications and materials for Bonner, as well as for City Year and Jumpstart, where she worked to develop its programs. Ari earned a bachelor's in Political Science at Stanford University, where she engaged in working in public schools in East Palo Alto. She earned a master's and doctorate in higher education from Drexel University and the University of Pennsylvania, respectively.



Paul Schadewald (he/him), Senior Program Manager for the Paradigm Project at Bringing Theory to Practice

Dr. Paul Schadewald joined Bringing Theory to Practice in 2022 after over two decades in civic engagement at Macalester College in St. Paul, MN. He is the Vice Chair of the National Advisory Board for Imagining America: Artists and Scholars in Public Life and is a National Field Leader for the Bonner Network. He also serves on the Member of Council of Impact Hub, Minneapolis-St. Paul, part of the global impact hub network. The book he co-edited, *Digital Community Engagement*, won the book of the year award from the National Council on Public History (2019-2020). He has also published in the areas of faculty development, civic professionalism, and community-based research. He earned his Ph.D. in U.S. History from Indiana University, Bloomington, and a B.A. in History from St. Olaf College. He is excited about advancing transformative undergraduate education through the Paradigm Project.

Role Based Tracks

Thursday, June 1 at 11:00 AM to 12:30 PM



Bonner Student Leaders

"Past: My Bonner Experience"

All Bonner students are invited to join this exciting and interactive session where you'll get the chance to reflect on your Bonner journey, deepen your understanding of it, and articulate it. Additionally, you'll meet and network with fellow Bonners through a quick speed dating activity, create and practice your personal elevator pitch, and sharpen your interview skills. Don't miss out on this awesome opportunity to connect with your peers and develop your professional skills. Plus, you'll learn how to best showcase all the amazing work you have accomplished and skills you've gained, or will gain. **Located in the School of Business Room 101.**

Facilitators include:

- **Rashel Bernal-Reyes**, National Bonner Intern and Bonner Leader at Rutgers University-New Brunswick
- **Jeniffer Gonzalez Reyes**, Program Manager at the Bonner Foundation
- **Andy Huerta**, National Bonner Intern and Bonner Leader at Rider University
- **Bryan Wood**, National Bonner Intern and Bonner Scholar at The College of New Jersey
- **Chloe Vereen**, National Bonner Intern and Bonner Scholar at Berry College



Past: My Bonner Experience

Session Worksheet

Site Work

BLT/Senior Intern/Student Leadership

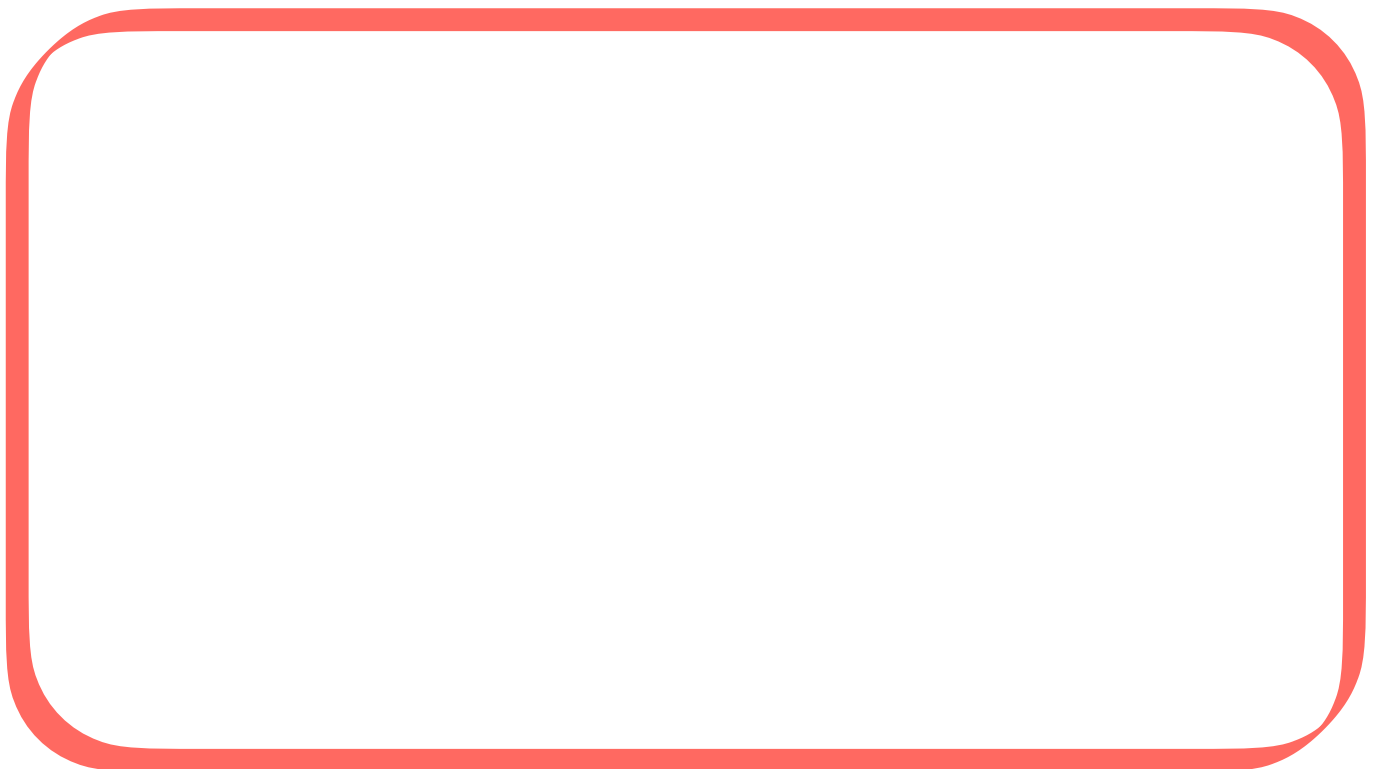
Campus Involvement

Academic Courses/Accomplishments

Outside of Bonner and University /College Experiences

Self Identity

My Bonner Acknowledgment



Role Based Tracks

Thursday, June 2 at 9:00 AM to 10:30 AM

"Bonner Business"

All administrators, staff, and faculty, please join us for the first forty minutes of this session for "Bonner Business" where you'll hear key announcements and updates from Bonner Foundation Staff. **Located in University Hall Lecture Room 1070. Then, choose from one of the following breakout sessions:**



Pathways to Public Service Track

"Stewards of Place": Connecting Community Engagement and Institutional Priorities

Join faculty and administrators connected with the community-engaged learning and Pathways Project to share and discuss how deep issue-based work is being connected with institutional and community priorities, as well as new sources of funding.

Located in University Hall Lecture Room 1070.

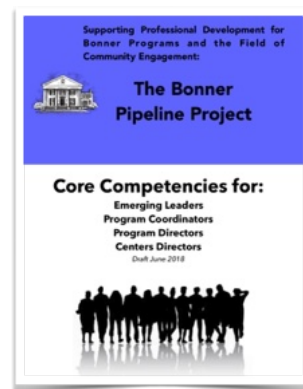
Bonner Administrators Track



"Developing as a Community Engagement Professional"

Drawing on the emergent literature and frameworks including the Bonner Pipeline Core Competencies, we invite Bonner administrators to join this session focused on deepening and expanding your knowledge and skills to advance your professional development. Participants will engage in an interactive activity and discussion to analyze and clarify goals to aid in their development as a Community Engagement Professional (CEP).

Located in University Hall Lecture Room 1060.



Bonner Student Leaders Track



"Present: Strategies for Taking Action"

Join us for an engaging session where you will learn and discuss effective strategies for collaboratively making change in your communities, programs, and campuses as a Bonner student. We will cover how to make the most of your Bonner experience by introducing the Bonner Learning Outcomes as a guide to help you better understand where you stand as a Bonner and where you could grow. This is also a great opportunity to meet other Bonners, learn from each other's experiences, and discover the many funding opportunities available to you as a member of the Bonner Network. **Located in School of Business Room 101.**

Role Based Tracks

Thursday, June 2 at 3:15 PM to 4:45 PM



Pathways to Public Service Track

“Developing Civic Minded Professionals: A Showcase of Pathways and Strategies”

Faculty and staff who are part of the Bonner Community-Engaged Learning Initiative and Pathways Project are invited to join this plenary session. In this session, participants will engage in a showcase of effective models and examples for community-engaged pathways. They will include certificates, minors, concentrations, and majors. We will also frame some strategies for how to inventory or map co-curricular and curricular components (such as service programs, internships, fellowships, courses) as a preview for later work at the 2023 Fall Bonner Network Meeting.

Located in University Hall Lecture Room 1070.



Bonner Administrators Track

“Round Table: Help Shape IARSLCE’s Global Research Agenda”

Bonner administrators have the opportunity to engage in a round table discussion to help shape the future of research in our field. This session is facilitated by Rachayita Shah, Community-Engaged Scholarship Director, in partnership with International Association of

Service Learning and Community Engagement (IARSLCE). IARSLCE encourages and presents research across all forms of engagement and educational levels. The new initiative of the organization is to be intentional about achieving inclusivity and diversity in the research on community-engaged teaching and learning (CETL) and inform publications in the International Journal of Research on Service-Learning and Community Engagement. The process involves conversations with multiple stakeholders (i.e. community-engagement professionals, faculty and staff involved in community-engaged learning, community partners, engaged students, etc.) to identify key issues and research questions in our field. Join this conversation to collectively ponder over research priorities around effective practices in community engagement, impact of CETL on diverse stakeholders, equity and societal advancement, methodological considerations etc., and help shape IARSLCE’s global research agenda. **Located in University Hall Lecture Room 1050.**





Bonner Student Leader Track

"Future: Bonner and Beyond" at 3:15 pm to 4:45 pm

Are you wondering what's next after Bonner? Don't worry, you're not alone! Join us for one of a kind session where you'll get to learn from Bonner Alumni representing various career fields and educational sectors. They have all gone on to find ways to stay connected with communities.

It's not your typical panel discussion. We're taking it to the next level by breaking out into smaller groups for more meaningful conversations with the alumni and other students. And of course, there will be plenty of time for a Q&A-style reflection with the alumni. Don't miss out on this awesome opportunity to get inspired and discover what exciting paths lie ahead! **Located in School of Business Room 101.**

Come chat with these terrific Bonner Alumni:

Activism, Policy, and Government

- **Jasmine Rangel**, Berry College Bonner Alum '17 and Senior Housing Associate at PolicyLink
- **Myla Ramirez**, Montclair State University Bonner Alum '14 and Government Representative at New Jersey Department of Environmental Protection

Education (K-12, Higher Education)

- **Christopher Lipari Paziienza**, Stockton University Bonner Alum '21 and EngageNJ Changebuilder VISTA
- **Tim Krumreig**, Oberlin College Bonner Alum '12 and Portfolio Manager at AmeriCorps

Healthcare & Wellness

- **Brittney Chong**, Earlham College Bonner Alum '17 and M.D. Candidate at Weill Cornell Medicine
- **Horacio Hernandez**, TCNJ Bonner Alum '18 and Masters of Public Health Candidate at The College of New Jersey
- **Rajbir Toor**, TCNJ Bonner Alum '21 and M.D. Candidate at Weill Cornell Medicine

Social Enterprise & Nonprofits

- **Alegria Cloma**, Wagner College Bonner Alum '22 and Volunteer and Civic Engagement Coordinator at Education Alliance
- **Angely Francisco**, Montclair State University Bonner Alum '22 and Community Advocate at CUMAC
- **Jesse Gerstin**, Oberlin College Bonner Alum '07 and ESG Advisor at Query Capital



Brittney Chong



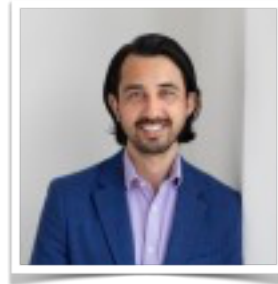
Alegria Cloma



Myla Ramirez



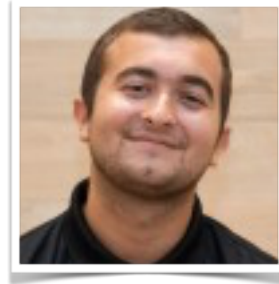
Angely Francisco



Jesse Gerstin



Horacio Hernandez



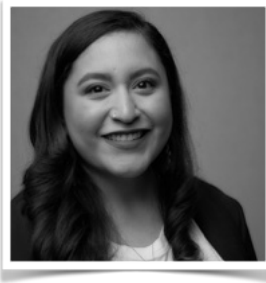
Chris Lipari
Pazienza



Rajbir Toor



Tim
Krumreig



Jasmine Rangel



Workshop Block 1

Thursday, June 1 at 2:00 PM to 3:30 PM



Brains and Budgets: How to Produce Great Science at any Resource-Limited University

This session is targeted for students, administrators, and faculty interested in how to be a successful leader when finances are limited, time is nowhere to be found, and the infrastructure is less than ideal. The session will showcase Dr. Keenan's experience working on projects addressing systemic difficulties at resource-limited

Universities, including a discussion of Minority Serving Institutions. Come to the session ready to listen, learn, discuss, and share your experience and perspective with getting it done when the odds are forever not in your favor.

Julian Keenan, Professor of Biology and Director of the Cognitive Neuroimaging Laboratory, Montclair State University
Location: UNIV 2006



Campus-Wide Community Engaged Learning for First-Year Students: Program Development and Implementation

At TCNJ, there is a college requirement that all first-year students must complete a community engaged learning experience. This is done through a four-day class with three in class sessions and one half-day of service. In this workshop, we'll discuss how the model has developed over time, as well as how the

current model has impacted the students, staff and community partners. Discussion will be geared towards translating parts of the model and its development back to your home institution and work.

Presented by Brittany Aydelotte, Director of Community Engaged Learning and Megan Teitelbaum, Community Engaged Learning Manager, Center for Community Engagement, The College of New Jersey
Location: UNIV 2004



Caption This!: Branding, Outreach, and Maintaining Community Partners

Stuck using a campus listserv to get your information out? Trouble bringing awareness to volunteer opportunities? In the world of social media, the opportunities for branding and outreach are infinite. Take advantage by learning how the media can build connections to your target audience, share knowledge, resources, opportunities, and

how this helps support strong, long lasting community partnerships. In this workshop, participants will have the opportunity to create branding ideas that support the growth of their programs as well as discuss best practice for creating long lasting partnerships.

Mikaela Guzman, Community-Engaged Learning Coordinator, Montclair State University
Location: UNIV 1060

Community: Rebuilding After the Pandemic

During COVID, it was difficult to sustain meaningful connections and interactions amongst campus communities. This heavenly

impacted programs, like Bonner, across the country. This workshop will discuss how these connections are a vital part of the Bonner community and how programs can work together to rebuild these relationships through meaningful experiences after the pandemic. Participants will get the opportunity to workshop team building ideas and receive feedback.

Jess Kershenblatt, Bonner Leader, Montclair State University

Location: UNIV 2010

Developing Inclusive Postsecondary Educational Opportunities for Students with Intellectual Disabilities:

From a Service-Learning course to an Academic Program

In this workshop, we will share the origins of the Increasing Access to College (IAC) Project, an inclusive postsecondary project at Montclair State University. This project began in 2015 as a partnership between a service-learning course and a day habilitation center serving adults with intellectual disability labels. Over time, the IAC has expanded and has provided a variety of opportunities for traditionally-enrolled college students at Montclair State University to learn alongside their same-age (18-21 year old) peers with intellectual disabilities who are co-enrolled at Montclair State and in a high school transition program. The IAC offers inclusive learning opportunities in education courses taught by Dr. Baglieri and Dr. Bacon and provides service-oriented opportunities for Bonner leaders and student volunteers enrolled in service and other field-based courses to provide peer support to IAC students. While on campus, and through a framework of peer support, IAC students audit courses, complete academic work, attend campus events and clubs, and enjoy social and recreational activities. Additionally, in Fall, 2024 a new Certificate in General Education Studies certificate program will



be launched, which will create opportunities for individual students with intellectual disabilities to apply to a formal 2-year academic program, which will also be run through a peer-support framework. In this workshop, we will highlight successes and challenges that we have faced during our development over the past 8 years. We will broaden the scope of the workshop to help the audience think about ways to scale up a range of service-learning initiatives over time. *Jessica Bacon, Associate Professor and Susan Baglieri, Professor, Montclair State University*
Location: UNIV 1030

Empower Your Community: Strategies for Successful Community Fund Grantmaking

Join us for an interactive workshop designed to provide you with an in-depth understanding of the Bonner Community Fund and its grantmaking process from promotion to evaluation. This workshop is specifically designed for Bonners, staff from Scholar schools, or funded leader programs who are interested in learning more about the Community Fund grantmaking process. Our presenter, Clifton Davis, Operations and Special Projects Coordinator at the Bonner Foundation, will cover topics such as successful campus projects, management, and promotion recommendations that can increase awareness and usage of the Bonner Community Fund. In this workshop, you will have the opportunity to engage in a discussion with other staff and students in the Bonner Network, ask questions, and share ideas. By the end of the workshop, you will have gained valuable knowledge on how to empower your process and make a greater impact through successful Community Fund grantmaking. *Clifton Davis, Operations and Special Projects Coordinator at the the Bonner Foundation*
Location: UNIV 1010

Workshop Block 1 (continued)

Thursday, June 1 at 2:00 PM to 3:30 PM

Life After Bonner: Creating A Career in Public Service (Yes, It's Possible!)

In this session, a seasoned public service graduate school admissions staff member will share some inspired perspective on taking the patient and continued steps toward making our world as a whole (and you, as an individual) a more hopeful place through your career & public service pursuits.

Alex Thomas, Assistant Dean, Clinton School of Public Service, University of Arkansas

Location: UNIV 1050



Reviewing and Strengthening the CLDE Coalition's Draft Framework for College Civic Learning

The Civic Learning and Democracy Engagement Coalition (CLDE Coalition - www.collegeciviclearning.org) includes education and policy organizations committed to making college students' civic learning for an engaged democracy a priority across higher education and in public policy. The coalition is led by the American Association of Colleges and Universities, Campus Compact, College Promise, Complete College America, and State Higher Education Executive Officers. The coalition is working in partnership with more than 70 higher education and student success organizations, including several state systems, and all seven institutional accreditors. The CLDE Coalition is currently "road-testing" a Draft Framework for College Civic Learning and Democratic Engagement. Participants are invited to discuss the framework and recommend ways of both strengthening and using it - with students, stakeholders, and the public.

Carol Geary Schneider, Senior Advisor to the CLDE Coalition and Caryn McTighe Musil, Independent Consultant with the CLDE Coalition

Location: UNIV 1020

Servant Leadership Development: A Progress Report on Your Participation in Montclair's National Science Foundation Study

This presentation will provide an overview of the contributions that Bonner students and directors have made to the National Science Foundation (NSF) funded project being carried out at Montclair State University titled Servant Leadership in Organizations: What are Its Cognitive Antecedents and How Does it Develop (IRB-FY17-18-934)? We will be providing an overview of the research study, why the Bonners are an important group for us to study, the status of the research so far, preliminary results, and future directions.

Zuzanna Myszko, Doctoral Candidate, Department of Psychology; Jennifer Bragger, Professor of Psychology & Laura Lakusta, Professor of Psychology, Montclair State University

Location: UNIV 2008

The New Now: How to Boost Bonner Morale

This workshop is well-suited for folks who care deeply about making their program one that supports community building and meaningful engagement. Come ready to share challenges and ideas. You'll hear about practices and perspectives from four different schools about ways to build community within the program. You'll leave with small changes and fun ideas you can make that improve student morale, wellbeing, and engagement.

Morgan Jennings, Coordinator for Student Programming; Robin Hille Michaels, Director Service Internship Programs, Sewanee; Taylor Hibell, Assistant Director of Bonner Program & Community Partnerships, Stetson University; Kisha Burton, Director of Civic Engagement, Lindsey Wilson College, Jessie Deal, Community Engagement Coordinator, Christopher Newport University, & Yayi Garcia, Bonner Coordinator, Lindsey Wilson College

Location: UNIV 1040

Notes

Workshop Block 2

Thursday, June 1 at 4:00 PM to 5:30 PM

Bonner Accountability: Creating a System of Support through Restorative Justice

This interactive workshop will share Centre Bonner Program's updated accountability policy based on a restorative justice framework, created by Bonner Senior Intern, Colby Kinser. By eliminating all probationary language from our accountability policy, we will be utilizing Restorative Plans, which are individualized plans to offer extra support to Bonners who may be struggling to meet the expectations of the Bonner Program or balance multiple responsibilities. This new accountability policy led to the creation of two new positions on our BLT (Bonner Leadership Team). New Bonner Mentors are two non-first year Bonners who are passionate about building the capacity of new Bonners to succeed in the program by providing intentional support. This workshop will be interactive, allowing the opportunity for participants to engage in discussion and hear from other Bonner Programs on how they approach accountability and support within the Bonner Program.

Sidney Saxen, Coordinator of Civic and Community Engagement and the Bonner Program; Gloria Lwin, Senior Bonner and New Bonner Mentor and Uri Medellin, Junior Bonner and New Bonner Mentor, Centre College
Location: UNIV 1060



Bon Voyage Bonners! How Study Abroad can Expand Bonner Students' Global Engagement

How can Bonner students be a catalyst for transformation and social justice in the global community? Join us in a discussion to explore how immersive international experiences can add value to the Bonner program. Learn about different study abroad models and how they can integrate Bonner's core values.

Abbey Fox, University Relations Manager, School for International Training (SIT) & Brooke Klinger, Program Associate for the Office of International Academic Initiatives at Montclair State University

Location: UNIV 1010

College Students Can be the Change Makers in the Fight Against Human Trafficking

Human Trafficking is growing in every community in the United States. In fact, many victims are in middle or high school and on college campuses. Preventing this heinous crime starts with education. Learn how college students can be the change makers in this fight.

Mimi Feliciano, Connect for Freedom; Jennifer Lyons, Human Trafficking Survivor; and Krystal Woolston, Assistant Director for Community Engagement at Montclair State University

Location: UNIV 1050

Connecting Humans and Telling Stories (C.H.A.T.S.)

Emory & Henry has partnered to develop C.H.A.T.S., which is Bonner led and facilitated. C.H.A.T.S. is an discussion-based workshop focusing on building more resilient

communities by bringing groups together and providing opportunities to foster genuine connection. In these interactive sessions participants will practice skills for listening, staying curious, challenging what we think we know about others, and for approaching conversations from different angles. A C.H.A.T.S. workshop is designed to deepen our appreciation and understanding of others and provide relational tools to take back to our homes, schools, and workplaces. No matter your background, everyone can benefit by learning how to better communicate and connect with others. At the end of the day, this journey of life is a "we" thing. The ability to connect is at the heart of helping communities heal, recover, and thrive.

*Ryan Vaughan,
Amelia Terry, Kiro
Pinedo-Lopez, Raquel Morales, Bonner Leaders,
Emory & Henry College*
Location: UNIV 1040



Empowering Advocates: Integrating Social Action into Bonner Programs and Campuses



Are you interested in integrating coursework or training on social action into your Bonner Program or campus? Join this session to learn about a model that has been replicated across the network and beyond. Faculty, staff, and students draw on a course, book, and resources developed by Dr. Scott Myers-Lipton at San Jose State to create courses that teach social action and support students in launching campaigns on issues they identify. Students in these courses not only learn about social issues and movements, but also launch policy-change campaigns during the course to make a difference.

Bobby Hackett, President, Bonner Foundation
Location: UNIV 1030

Enneagram: Beyond a Personality Test

The Enneagram is the legacy of an ancient tool for understanding the 9 dominant types of personality, our fears and our motivations. In this workshop you will get closer to understanding your type and have the tools for moving forward in your journey of self discovery. At QVS, Fellows use the Enneagram for personal reflection and self actualization that helps them understand their gifts in

supporting current social movements. Join us to dive into this tool that can inspire meaningful self care and self awareness that is essential for sustainability while working towards a liberated future.

Zenaida Peterson, Director of Equity and Empowerment & Boston Coordinator, Quaker

Voluntary Service
Location: UNIV 2008

How Do We Establish Welcome and Support in 2023 and Beyond?

This workshop is not designed to give answers but rather a space to ask questions and hear how others are tackling common challenges. We'll explore a variety of areas regarding student support and accessibility to see how Bonner Programs are meeting these needs, what challenges continue, and how we can support one another. Areas to discuss will include physical accessibility, dietary restrictions, auditory or visual challenges, class, race, anxiety, ethnicity, gender - across all of these areas and more - asking, how "do we create a supportive and hospitable space?", and "how do we make sure we have structures in place to support those practices?". Bring your questions, your successes, and your perspective so we can also discuss how to do this work in culturally appropriate ways.

Sarah Rohrer, Associate Director of CELTS, Berea College
Location: UNIV 2006



Queering Spaces of Service-Learning and Civic Engagement

The word "queer" can be applied to more than just sexuality. The ability to fuse queer theory with spaces of service-learning and civic engagement can make participation, learning, and outcomes that much more critical. In this workshop, we will learn what queer theory is and how we can "queer" the spaces and solutions that we take part in. This session is meant to be highly engaging, theoretical, and discussion based.

Matthew Little, Bonner Leadership Program Coordinator, University of Nevada, Reno

Location: UNIV 1020



Round Table: Help Shape IARSLCE's Global Research Agenda

The International Association for Research on Service-Learning and Community Engagement (IARSLCE) encourages and presents research across all forms of engagement and educational levels. The new initiative of the organization is to be intentional about achieving inclusivity and diversity in the research on community-engaged teaching and learning (CETL) and inform publications in the International Journal of Research on Service-Learning and Community Engagement. The process involves conversations with multiple stakeholders (i.e. community-engagement professionals, faculty and staff involved in community-engaged learning,

community partners, engaged students, etc.) to identify key issues and research questions in our field. Join this conversation to collectively ponder over research priorities around effective practices in community engagement, impact of CETL on diverse stakeholders, equity and societal advancement, methodological considerations etc., and help shape IARSLCE's global research agenda.

Rachayita Shah, Community-Engaged Learning Director, Bonner Foundation

Location: UNIV 2004



Student-Led Course Development: How to Leverage Student Leadership to Build Lasting Engagement on Your Campus

Join Shriya and Allison to discuss how a student's passion project and a need identified by an engagement center director grew into a co-created course: Community Engagement 101. The team will take you through their process of developing the new course that all incoming Siena Bonners will take next fall, identify what worked and what didn't, and ask for your input and ideas as to how to continue the improvement cycle. This workshop is appropriate for anyone interested in course development and the development of a students as colleagues model.

Allison Schultz, Director & Shriya Matta, NExT Fellow, Siena College

Location: UNIV 2010



Notes

Workshop Block 3

Thursday, June 2 at 11:00 AM to 12:30 PM

An Innovative Strategy for Boosting Student Buy-In: Negotiate a Contract

Finding the right balance between student leadership, accountability, and agency in a Bonner Program can be tough! While this workshop does not have all the answers to this predicament, it will provide a strategy for navigating these competing needs through a contract and negotiation process which you can integrate into your Bonner Program. Starting in Winter 2022, the Bates College Bonner Program gave all its Bonner Leaders the opportunity to negotiate a contract regarding the expectations of the program. Not only does this give agency and power to the students to create the Bonner Program they want to be a part of, it has also led to an increase in meeting attendance, greater completion of hours, and more thoughtful engagement within the program. This session overviews one way to complete a contract and negotiation process; hears from both staff and students about their thoughts on it; and goes through an interactive activity to design a contract process for your program. This session is geared toward Bonner Program staff; however this session will also be of interest for Bonner Leaders and Scholars, especially Senior Interns *Ronan Goulden, AmeriCorps VISTA/Civic Leadership Fellow; Aleisha Martinez Sandoval, Bonner Leader and Khalaf Gabsi, Bonner Leader, Bates College*
Location: UNIV 1060



Building University-Community Partnerships: The Case of the Harm Reduction Initiative

The United States is in the midst of an opioid epidemic that has taken a significant toll on Americans. In 2021, over 100,000 people have died from a drug overdose, representing more than 70% increase over the past five years. The US

opioid epidemic is an ongoing public health emergency requiring both short-term and long-term solutions that will save lives and reduce drug-related harms. Institutions of higher education can play a meaningful role in addressing the

opioid epidemic by creating university-community partnerships to promote evidence-based and social justice-oriented solutions. In this workshop, we will discuss the Montclair State University (Montclair) Harm Reduction Initiative. This initiative is a university-community partnership aimed to evaluate and address substance use treatment and harm reduction-related needs and gaps in the northern New Jersey region and beyond. In the workshop, we will discuss: (1) The goals, objectives, and current activities of the Montclair Harm Reduction Initiative.

(2) The challenges, successes, and lessons learned in establishing meaningful community partnerships.

(3) Engaging students in the Montclair Harm Reduction Initiative

(4) The future of the initiative, and its sustainability as a university-community partnership.

Svetlana Shpiegel, Associate Professor, Department of Social Work and Child Advocacy & Jason Williams, Associate Professor, Department of Justice Studies, Montclair State University

Location: UNIV 1050

Campus wide Engagement: Using What Ya Got to Get What Ya Want

This workshop highlights the struggles, joys, triumphs, and challenges of campus-wide community engagement, lifting up examples from two contexts - an urban HBCU and a rural

university. Participants will engage in group discussion and reflection to identify the resources and tools they have, the issues or obstacles they are facing and how they might work through or around them. This session is targeted for campus wide engagement staff at various stages seeking to expand the curricular and co-curricular engagement on their campus.

Felicia Deas, Associate Director Bonner Office of Civic Engagement, Spelman College & Anna Sherrill, Coordinator of Community-Based Learning for the Hartman Center for Civic Engagement, DePauw University

Location: UNIV 1040



Community-Engaged Learning as Pathway to Scholarship

This workshop will be centered on the experiences of two faculty members (Dr. Lesley Sylvan and Dr. Lauren Dinour) at Montclair

State University (Montclair) embedding community engaged work into their teaching. Both of the presenters participated in the Community-Engaged Teaching and Learning (CETL) Fellows program at Montclair and have embedded a variety of projects into their classes as well as published academic articles on the impact of these projects. In the presentation, they will discuss how their work began, how it progressed and evolved over time, and their process with publishing their work in a variety of outlets. In particular, they will discuss the

challenges of establishing partnership with community organizations, engaging and motivating students participating in service-learning projects and the challenges of publishing work in this area. We will also discuss the value our projects added to both their students' learning and their own work as academic-researchers. This presentation will end with an interactive discussion where

the audience can ask questions about how they can jump start their work and advice for working towards publications.

Lauren Dinour, Associate Professor and Lesley Sylvan, Assistant Professor, Montclair State University

Location: UNIV 2010



Establishing a Campus-wide Community Engagement Council: Initial Steps

Our campuses all have various units that are, in particular ways, community engagement stakeholders. Many, though, are unaware of what others are doing. So there are missed opportunities for collaboration, through which units may learn together, conjoin resources, expand community networks, build institutional capacities, etc. This interactive workshop leads participants through several initial steps of establishing a campus-wide body of stakeholders representing your

Workshop Block 3 continued

Friday, June 2 at 11:00 AM to 12:30 PM

institution's myriad community-engaged units, who may collectively forge opportunities pertaining to curriculum and pedagogy, campus/community relations, research, social justice, career services, and other endeavors. Workshop participants will develop initial inventories of their campus' stakeholder units and work together to build a tailorable survey, which may be used to build a comprehensive inventory; to sow awareness of one's campus' community-engagement infrastructure; and to gauge interest in participating in a collective body. The workshop will also address some structural and procedural features of such a collective body.

Todd Kelshaw, School of Communication and Media & Bryan Murdock, Associate Vice President of Community Partnerships, Montclair State University
Location: UNIV 2006

Global Perspectives

→ **Personal**

Transformation → Social Change

Students in college today face ever-growing challenges, from personal to local to global. A worldwide pandemic, human rights violations, climate change, and mass violence are but a few. How can college students gain the skills needed to create change? A truly immersive global experience such as the one offered by Global Citizen Year in South Africa is a model for beginning with self-knowledge and personal transformation as the root to action for sustainable change, whether on campus, home communities, or globally. What makes an experience transformative? What is transformational learning? This session will allow participants to engage in exercises that reflect on their own paths to growth, how these relate to civic engagement and social

change, and how "the personal is political". (Carol Hanisch, 1970).

Mindy Nierenberg, Higher Education Consultant, Global Citizen Year

Location: UNIV 2004

Introduction to Human Trafficking: Comprehensive Campus Response

This session has been curated for students to learn about human trafficking, its risks, and its indicators, focusing on why college students are vulnerable.

We will discuss why a community-based approach is a key prevention method against human trafficking. This session will be interactive, including quizzes and case studies to help participants learn and walk away with new tools and insights on how to approach this important, complex issue in a



safe and sustainable manner.

Ashlee Martellacci, Student and Volunteer Coordinator, Christabelle Robinson,

Communications and Social Media Specialist, and Jess Kershenblatt, Student Ambassador and Montclair Bonner Leader, Global Center on Human Trafficking

Location: UNIV 1070

Making Accessible the Visual Arts: Audio Description for the Blind and Low Vision Spanish-Speaking Community

Audio description (AD) is the translation of images into words, mainly for visually-impaired audiences and for any visual content (movies, plays, paintings, live events, etc.). While AD in English is

a reality in the US (partly because it is mandatory by law), AD in Spanish is almost nonexistent. Being Spanish the second language in this country and due to its growing need in every aspect of life, training translation students in AD in Spanish to serve the visually-impaired Latino population would only make sense. The purpose of this workshop is to show how community-engaged courses on audio description can be part of the academic curriculum. In particular, I will share how two current partnerships in theater with the Repertorio Español in NY and in art with the Montclair Art Museum are part of this community-based course at Montclair State University. I will explain in detail what challenges we encounter, and how those are overcome. Apart from learning about AD, I intend my students be able to reflect critically upon language, arts, accessibility, and inclusion in the bilingual reality of the US, especially in the tri-state area where we are located.

María José García-Vizcaíno, Associate Professor and Chairperson, Spanish and Latino Studies

Location: UNIV 2008

Social Justice and Public Health

Gun violence, access to clean water, reproductive rights, police brutality, food insecurity and mental health. What do all of these topics have in common? They are public health challenges currently being addressed by epidemiologist, behavioral scientists, biostatisticians and other public health professionals. Join Donelle Durham, Senior Associate Director of Admission & Recruitment at Emory University: Rollins School of Public Health for a discussion on public health and social justice.

Donelle Durham, Senior Associate Director of Admissions & Recruitment, Rollins School of Public Health, Emory University

Location: UNIV 1030

Streamline and Thrive: Building an Integrated Management System for Bonner Programs and Campus Centers

Are you tired of managing your Bonner Program and campus-wide center with inefficient spreadsheets, email, and shared folders? Attend this session to learn how to create an integrated project and

information management system tailored to your team's needs. We'll demonstrate various workflows that automate key processes, such as requesting project opportunities from community partners, conducting end-of-semester feedback surveys, and applying for summer service funding, among others. Share your approach and learn from others how to build internal platforms that give you more time to do the personal work that

drew you to this field in the first place.

Bobby Hackett, President, Bonner Foundation

Location: UNIV 3006

Tips for Submitting a Strong Graduate School Application

Applying to graduate school can be both exciting and intimidating. There are hundreds of programs out

there, and each one has its own list of application instructions and requirements. The application process can feel daunting and time-consuming, especially when you're trying to balance coursework, jobs and other extracurricular activities on top of it. During this session, you'll receive guidance around navigating the graduate school application process, as well as some tips to help you submit your strongest application. It's never too late or too early to start thinking about grad school, so students of all levels are encouraged to attend! Be sure to come with questions.

Sarah Lueken, Associate Director of Admissions & Recruitment, Brown School at Washington University in St. Louis

Location: UNIV 1010

Translating Your Service to Future Employers

Your time spent in the community counts in more ways than one! During our session, we will discuss how to identify the skills you have developed while volunteering and how you can translate your experience to future employers!

Nadéla Offré, AmeriCorps Recruitment Manager, Vanessa Gray, Program Manager, Keyna Anyiam, Community Engagement Manager, Operations, Reading Partners

Location: UNIV 1020



National Partners

This year's conference features organizations who partner meaningfully with the Bonner Network through internships, employment, fellowships, grants, study away, and other opportunities. Interact with our national partners at the networking fair, in elective workshop blocks, and during the networking events. Read more about each organization and the representative attending SLI below:



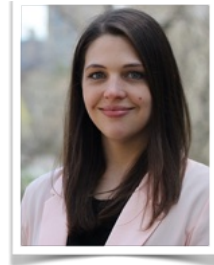
Bard Globalization and International Affairs Program

BGIA provides a unique opportunity for college students and recent college graduates from around the world to take specialized courses in international affairs while working in carefully selected internships based on individual interests.

Students spend mornings at their internships around New York City, and afternoons studying with leading scholars, practitioners, and policymakers. A semester or summer at BGIA also includes talks by high-profile guest speakers and exciting cultural events—all while experiencing life in Manhattan, the island at the center of the world.

Grace Lubell, Program Manager

Grace Lubell earned a BA in Asian studies from Skidmore College, New York, where she studied abroad twice in Nagoya and Osaka, Japan. She became interested in Japanese Buddhist art and went on to earn a MA in Japanese humanities from Kyushu University, Japan. Upon returning to New York, she worked at a Japanese art gallery on Manhattan's Upper East Side from 2015–2017, and then became an associate program officer of Japanese studies at the Japan Foundation, New York, from 2017–2021. Grace joined BGIA as programs manager in 2021.



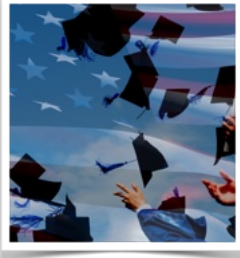
Bringing Theory to Practice

BT2P is a national project, headquartered at Elon University, supporting community of educators dedicated to both the core purposes of higher education and the need to transform higher education. Since 2003, BT2P has funded hundreds of campus initiatives. BT2P focus on collaboration among academic institutions, across academic sectors, and with communities. They believe that change doesn't happen campus-by-campus. It comes by building a national community of change leaders and amplifying their voices in the public conversation about higher education.

Paul Schadewald, Senior Program Manager

Paul joined BT2P in 2022 after over two decades in civic engagement at Macalester College in St. Paul, MN. The book he co-edited, *Digital Community Engagement*, won the book of the year award from the National Council on Public History (2019-2020). He has also published in the areas of faculty development, civic professionalism, and community-based research. He earned his Ph.D. in U.S. History from Indiana University, Bloomington, and a B.A. in History from St. Olaf College.





Civic Learning and Democratic Engagement Coalition

The Civic Learning and Democracy Engagement Coalition (CLDE Coalition) includes education and policy organizations committed to making college students’ civic learning for an engaged democracy a priority across higher education and in public policy. The coalition is led by the American Association of Colleges and Universities, Campus Compact, College Promise, Complete College America, and State Higher Education Executive Officers. The coalition is working in partnership with more than 70 higher education and student success organizations, including several state systems, and all seven institutional accreditors.

Carol Geary Schneider, Senior Advisor

Carol Schneider served as the president of the Association of American Colleges and Universities (AAC&U) from 1998 to 2016. Schneider is one of the leaders of the Liberal Education and America’s Promise (LEAP) initiative, a ten-year campus action and public advocacy campaign design to engage students and the public with what really matters in college. Since 2020, Schneider devoted most of her time to creating the Civic Learning and Democracy Engagement Coalition (CLDE), working to make college-level civic and democracy learning expected, inclusive, and empowering for today’s diverse learners.



Connect for Freedom

Connect for Freedom is working to raise visibility around human trafficking, which is growing in every community in the United States. Sadly, many victims are in middle or high school and on college campuses. Preventing this heinous crime starts with education. Learn how college students can be the change makers in this fight.

Mimi Feliciano (She/Her), Board Member and Leadership Team at Montclair State University

Mimi Feliciano is Founder and CEO of FEM Real Estate, a Real Estate Investment Company, based in Montville, New Jersey and of Connect for Freedom, a nonprofit. She is a passionate advocate around issues of global trafficking. Mimi works with The Global Center on Human Trafficking at Montclair State University as its Board Chair. She is also active as a Board Member for the Feliciano School of Business and Center for Entrepreneurship. She is a recipient of numerous awards including the Top 25 Leading Women Entrepreneurs in 2014 and Best 50 Women in Business.





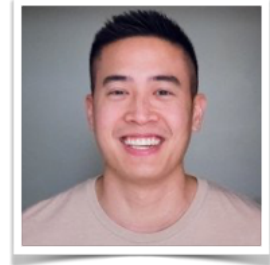
GivePulse

GivePulse enables everyone to engage, organize and understand the impact of positive social change. It takes one person to build a movement that can change the world.

GivePulse mission is to enable everyone in the world to participate and engage in lifting their community to new heights. GivePulse provides a platform to list, find, organize and measure the impact of service-learning, community engagement, philanthropy and volunteerism in the community.

George Luc, CEO & Co-founder

A community activist, technologist, user experience and design professional. George has a BS and MS in Computer Science from Virginia Tech with an emphasis in Human Computer Interaction. He spent much of his early career developing technology for people with disabilities and has worked with companies like Daylert, IBM, ESO Solutions and HomeAway. George is a TEDxAustin speaker, SXSW Dewey Honoree, and he and GivePulse have recently been honored for their work as White House Champions for Change.

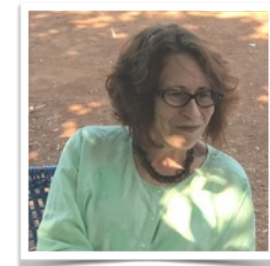


Global Citizen Year is a nonprofit launching a generation of young people with the perspectives, skills, and networks to address humanity's most urgent challenges. Through Take Action Lab, Global Citizen Year recruits and trains a diverse group of talented young people from across the globe and supports them through a semester-long, immersive program abroad that combines curriculum, coaching, and lived experience to turn students' potential into meaningful and sustainable action. Take Action Lab welcomes students, including Bonners, to

Cape Town, South Africa where students apprentice at human rights organizations and learn how to tackle global issues from the ground up. Using the formative transition into adulthood, Global Citizen Year has proven impact in shaping values, identity, and purpose in ways that classroom learning alone cannot.

Mindy Nierenberg, Higher Education Consultant

Mindy Nierenberg has 38 years of experience in higher education and has a long connection with the Bonner Foundation. She is currently a Higher Education Consultant who works with Global Citizen Year and other organizations. Mindy spent 18 years at Tufts University as the Senior Director of Programs for the Tisch College of Civic Life. Previously, she worked at the Massachusetts College of Art and Design, where she was the founder and director of the Office of Service Learning and Community Partnerships and served as the Associate Dean of Students and Assistant Dean of Academic Affairs.



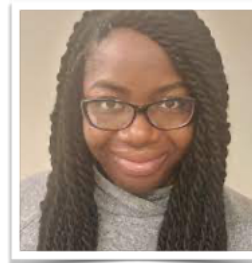
Reading Partners

Reading Partners is a national nonprofit that mobilizes communities to provide students with the proven, individualized reading support they need to read at grade level by fourth grade. We know that reading is the foundation for all future learning. The ability to read transforms lives and empowers children and communities to reach their full potential. We partner

with under-resourced schools and engage volunteer reading partners to work one-on-one with students who struggle with reading. Our volunteers provide hour-long tutoring sessions to students— following a structured, evidence-based curriculum developed with an expert team of curriculum advisors. Our program model works and is backed by evidence-based research which proves that our students make significant gains in reading.

Keyna Anyiam, Community Engagement Manger, Operations

Keyna is a seasoned network engagement professional with a multidisciplinary background in city and state government, private sector, and non-profit organizations, spanning ten years. As the community engagement manager, she manages the onboarding and training for volunteer tutors, facilitates the retention and recruitment of community partners, and reports critical volunteer insights throughout the Baltimore region. Keyna is no stranger to Reading Partners Baltimore, having served as a volunteer in 2014. She is excited to find new ways to work with the community to close the literacy opportunity gap and help those interested in leveraging their skills for volunteer opportunities and beyond. Keyna earned her bachelor's in Political Science from Saint Francis University and is currently an appointed Board Member for the Montgomery County (MD) Board of Elections.



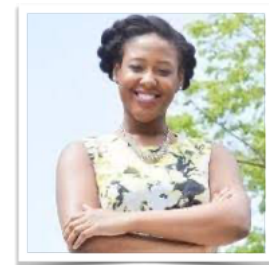
Vanessa Gray, Program Manager

Vanessa discovered her passion for educational equity while completing her first AmeriCorps service term with Bay Area Youth Agency Consortium and has since dedicated her career to bringing high-quality educational experiences and resources to students. She first joined Reading Partners Baltimore as a Site Coordinator and completed two AmeriCorps terms of service with the organization before becoming a Reading Partners staff member. She is currently a Program Manager and enjoys sharing her experiences and expertise with new AmeriCorps service members in the areas of literacy best practices, volunteer management, and professional development skills.



Nadéla Offré, National AmeriCorps Recruitment Manager

Nadela joined Reading Partners in March as the National AmeriCorps Recruitment Manager. Previously, she was the Regional Northeast Recruitment Manager with Urban Teachers. Nadela holds a Bachelor of Science in Business Administration from Suffolk University and a graduate certification in Community Leadership and Social Change from Tufts University.



School for International Training



School for International Training (SIT) is a leader in immersive, field-based study abroad programs for undergraduates. We offer programs in Africa, Asia and the Pacific, Europe, Latin America, and the Middle East, as well as comparative programs in multiple locations. In addition to our rich history, our programs'

unique qualities – including exceptional locations, independent research, cultural immersion, and deep local networks — make our programs an ideal choice for an extraordinary, transformative study abroad experience.

Abbey Fox, University Relations Manager

Abbey joined SIT as a university relations manager in 2022 and looks forward to using her experiences in international education to help build new partnerships with other universities. Before joining SIT, she worked in Spain and South Korea as an English as a second language teacher. Her other international experiences include living in Uganda and Argentina and traveling to more than 30 countries. She holds a master's in international education from the Universidad de Alcalá de Henares in Spain and a bachelor's in psychology from Case Western Reserve University.

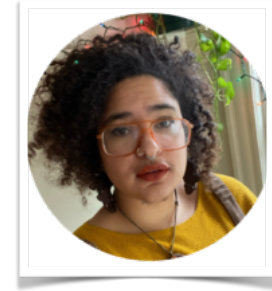




**QUAKER
VOLUNTARY
SERVICE**

Quaker Voluntary Service

QVS an 11-month experiment, living at the intersection of transformational spirituality and activism. Young adults work full-time in professional positions at community based organizations addressing a wide range of issues, while living in a cooperative house and worshipping with, and being mentored by, local Quakers. Fellows receive housing, transportation, food, support for health and wellness (including access to health insurance if needed), and a small stipend, while engaging in regular self-led workshops and retreats that allow for continuing education in social justice, faith, and community building topics.



Zenaida Peterson, Boston Coordinator & Director of Equity & Inclusion

Zenaida Peterson is an alum of the Quaker Voluntary Service program in the Boston house (2016-2017). They have stayed connected with QVS since their service year in various roles and are now the Director of Equity and Empowerment and the Boston Coordinator. A few things that are important to Zenaida are the Wildwood nature connection school, writing poems, uplifting queer and trans youth, transformative justice and making doughnuts with herbs from their garden.



The Volcker Alliance

The Volcker Alliance is a nonprofit founded in 2013 by former Federal Reserve Board chairman Paul A. Volcker, dedicated to advancing his vision of an empowered public sector workforce. Its work supports current and aspiring public servants by

strengthening public service education, championing public service values, and providing strategies to help them deliver better results. The Volcker Alliance builds partnerships with government and universities, promotes innovation in public service education, drives research on effective government, and inspires others with the story of Mr. Volcker's commitment to public service. The Volcker Alliance believes public service is a high calling, and it is critical to engage our most thoughtful and accomplished citizens in service to the public good. The Volcker Alliance is working with universities around the nation to launch Next Generation Service Corps programs.

Tammie Green

Tammie Green joined the Volcker Alliance in 2022 as a strategic project consultant after establishing Georgia State University's Next Generation Service Corps program: the Social Action Alliance (SAA). The SAA aims to cultivate the next generation of social change makers. Tammie previously served as an instructional design and multimedia graduate assistant, and a PR & Marketing graduate assistant where she wrote articles for the Andrew Young School News Hub and the GSU Magazine. She has been a multimedia writer, producer, and educator for over 15 years with experience in TV, Film, nonprofit film education, and creative and professional writing. She has worked at (the original) Tyler Perry Studios, at Rainforest Films, and on several productions with Black Entertainment Television (BET). She also founded Sowartist Inc., a nonprofit dedicated to teaching film development and production to students with barriers to creative summer programming.



Notes

Resume Review

During the Networking Fair, you can discuss your resume with one of the Resume Coaches to get feedback on how you present your educational and professional experiences. Students, be sure to include all dimensions of your Bonner Program work, including with community partners and on projects.

Thanks to the Resume Review Coaches who volunteered:

Bobby Hackett (Bonner Foundation), Daniela Chica (Montclair), Christopher Lipari Pazienza (Stockton University and Engage NJ), Emely Bryan (Montclair), Horacio Hernandez (TCNJ), Ian McGinnity (University of Tampa), Jasmine Rangel (Berry College and Policy Link), Jessica Pichardo (Montclair), Michael Kalage (Rutgers University - New Brunswick), and Timothy Krumreig (Oberlin College and AmeriCorps).



Graduate School Partners

This year's SLI features graduate schools that partner meaningfully with the Bonner Network to offer scholarships and other benefits to Bonner students and alumni pursuing graduate education. Interact with our graduate school partners at the networking fair, in elective workshop blocks, and during the networking events. Read more about each graduate school, the partnership benefits, and the representative attending SLI below:

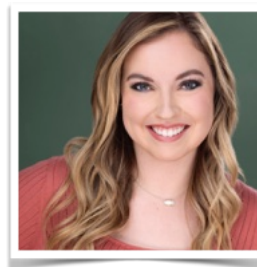


Brown School at Washington University in St. Louis

The Brown School at Washington University in St. Louis believes that exploring the intersections in social work, public health and social policy creates stronger solutions to complex societal and health issues. The Brown School offers a Masters of Social Work, Masters of Public Health, and Masters of Social Policy. **The Brown School has partnered with the Bonner Foundation to offer \$40,000 tuition award, for two Bonner Scholar/Leader alumni. All Bonner Scholar/Leader alumni admitted to the program will be eligible for a minimum \$10,000 annual tuition scholarship.**

Sarah Lueken, Associate Director of Admissions & Recruitment

Sarah Lueken is the Associate Director of Admissions and Recruitment at the Brown School at Washington University in St. Louis. She holds a Masters of Arts in Communication from the University of Kentucky and a Bachelors of Arts in Communication Studies and Public Relations from Eastern Illinois University.



Clinton School of Public Service at University of Arkansas

In 2004, President Clinton launched the Clinton School of Public Service, a (non-partisan) graduate program designed for people around the globe who are passionate about developing public service solutions in a world of need. The Clinton School offers both a 100% Online Masters of Public Service, and an In-Person Masters of Public Service (with distinct scholarships available to admitted Bonner students & alumni). The Clinton School Online (CSO) Masters of Public Service degree for mid-career professionals (those who have had at least 3 years of professional experience – this can be perfect for Bonner Alumni who desire to work full-time and live anywhere in the world while pursuing their Masters degree). The CSO application has no application fee, and does not require the GRE exam -- the Clinton School wants graduate education to be accessible to all who seek to serve the public good. As a partnership with the Bonner network, **the Clinton School will award at least \$5,000 of merit-scholarship to either Clinton School Masters of Public Service degrees (MPS or CSO) for up to 5 Bonner Alumni who are admitted.**

Alex Thomas Assistant Dean of Enrollment and Student Services

Alex is an experienced professional in talent recruitment, higher education enrollment management, alumni development, and building intentional community. He is successful in his career of connecting people of all ages and life backgrounds to meaningful educational/experiential opportunities and career paths. He has developed new markets throughout every region of the country, managing lead flow and nationally developing relationships with partner organizations. He has developed, launched, and currently manages the Clinton School Alumni Board. He is active in public service within the community, with experience leading and serving in faith-based organizations, mental health support services, youth mentoring, and diversity initiatives.



Heinz College of Information Systems and Public Policy at Carnegie Mellon University

The Heinz College is home to two internationally recognized graduate-level institutions: the School of Information Systems and Management and the School of Public Policy and Management. This unique colocation combined with its expertise in analytics set Heinz College apart in the areas of cybersecurity, health care, the future of work, smart cities, and arts & entertainment. Bonner Scholar/Leaders, alumni or staff interested in pursuing a master's degree are encouraged to apply for admission to any of Heinz College's master's degree programs and will receive the following **partnership benefits: 1) application fee waiver and 2) a minimum scholarship of \$30,000.**



Priscilla Morales, Assistant Director of Admissions

Priscilla Morales serves as an assistant director of admissions for Heinz College. She identifies as a Mexican-American (Chicana) from El Paso, Texas. As an inaugural co-lead, her goal is to bring multicultural awareness and support to the Latine community at CMU. Priscilla is excited to learn and connect with other individuals that make up this vibrant and diverse community.

McCourt School of Public Policy at Georgetown University



This top-ranked public policy school located in the center of the policy world in Washington, D.C. will waive the application fee for all Bonner Scholar and Leader applicants and provide up to **two admitted Bonner Alumni a \$25,000+ scholarship award.** The McCourt School flagship degree is the Master in Public Policy. McCourt also offers a Master in International Development Policy, a Master of Science in Data Science for Public Policy, a Master in Policy Management, an Executive Master in Policy Leadership, as well as other dual degree and executive programs.



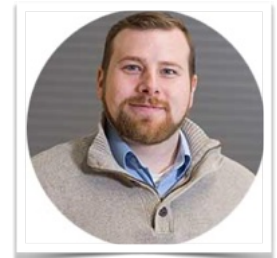
Julie Ito, Director of Admissions

Julie Ito is the Director of Admissions at the Georgetown University McCourt School of Public Policy. Prior to joining, Julie was the Associate Director of Admissions at the University of California, Berkeley Haas School of Business. Julie holds a Bachelor of Arts in Sociology from the University of California, Berkeley, and a Masters of Art in Liberal Studies from Georgetown University.

O'Neill School of Public and Environmental Affairs at IU Bloomington



The Paul H. O'Neill School of Public and Environmental Affairs at Indiana University in Bloomington, Indiana offers professional, interdisciplinary graduate degree programs in public affairs, environmental science, arts administration, healthcare management, and environmental sustainability. Bonner students and alumni who apply for any of the O'Neill School's master's degrees or dual master's degrees **receive priority admission, an application fee waiver and 25% tuition remission.**



Patrick Lewis, Assistant Director of Graduate Student Recruitment

Patrick Lewis is the Assistant Director at the O'Neill School of Public and Environmental Affairs. Prior to joining, Patrick was a Life Coach at the Excel Center. Patrick holds a Bachelor in Secondary Education and Training from Indiana University Southeast.



Perleman School of Medicine at University of Pennsylvania

The PhD programs in epidemiology and biostatistics at the University of Pennsylvania’s Perelman School of Medicine offer students a unique, interdisciplinary framework in which they will develop and hone their skills as independent investigators. Through rigorous coursework and immersive research, students are trained to develop, apply, and extend biostatistical and epidemiological methodologies to address questions in the biomedical sciences and graduate prepared to assume leadership roles in academia, industry, and the non-profit sector. ***The University of Pennsylvania will waive the application fee for applicants to the PhD programs in Biostatistics and Epidemiology who are Bonner Scholars and Bonner Leaders.***

Russell (Taki) Shinohara, Professor of Biostatistics and Epidemiology

Dr. Shinohara's methodological research centers on the assessment of structural and functional changes in the brain throughout development and in neurological, psychiatric and developmental disorders. He is interested in describing complex processes and studying questions that have direct impacts on human health through clinical trials and observational studies. He pursues broad collaborative interests in medicine and public health, with particular emphasis in quantitative biomedical imaging and epidemiology.

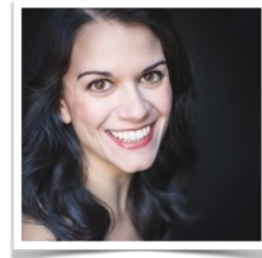


Robert Wagner School of Public Service at NYU

NYU's Robert F. Wagner Graduate School of Public Service prepares public service leaders to translate ideas into actions that have an effective and lasting impact on the public good. We provide our students with critical skills, access to all that New York City has to offer, and a deep understanding of the context surrounding public service challenges—which they use to improve cities and communities across the globe. ***NYU Wagner will waive the \$85 application fee for all Bonner Scholars and Bonner Leaders who apply to the program.***

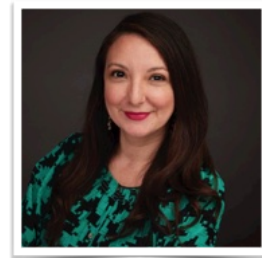
Sarah Arikian-Coe, Assistant Director of Admissions

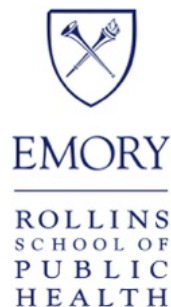
Sarah Arikian-Coe is the Assistant Director of Admissions at NYU Wagner School of Public Service. Sarah assists in recruitment, admissions advising, and yield for graduate admissions. Sarah holds a Bachelor of Music from the Manhattan School of Music, a Masters of Art in Classical Vocal Performance from NYU Steinhardt School of Culture, Education, and Human Development, and is currently pursuing a Masters of Art in Higher Education and Student Affairs from NYU.



Fortuna Smith, Assistant Director, Admissions

Fortuna is the Assistant Director of Graduate Admissions at New York University. Her passion, dedication, and priorities lie with the students and improving her skill set every day. She has a B.A. in English Literature from University of St. Thomas in Texas and a M.A. in Higher Education from New York University.





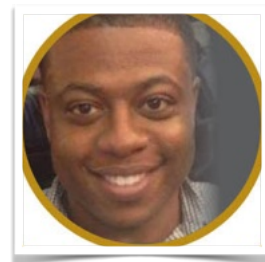
Rollins School of Public Health at Emory University

At the Rollins School of Public Health, students learn to identify, analyze, and intervene in today's most pressing public health issues. The public health school's location in Atlanta, referred to as the "Public Health Capital of the World." This setting is ideal for hands-on research, collaborations with the world's leading public health agencies, and interdisciplinary work with national and international organizations. Our public health graduate program is community oriented, and many students bring actual problem-solving experiences with them.

Bonner students and alumni who have been admitted to the MPH or MSPH programs will receive as part of the financial aid package: \$10,000 Rollins Earn and Learn Award and \$10,000 Rollins School of Public Health tuition scholarship.

Donelle Durham, Senior Associate Director of Admissions & Recruitment

Donelle serves as the Senior Associate Director of Admissions and Recruitment at the Rollins School of Public Health at Emory University. In this role, he supports recruitment and the admissions process for students interested in pursuing public health graduate studies.

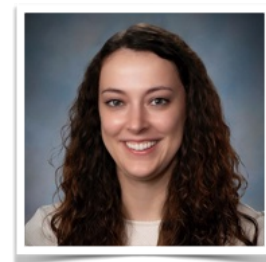


School of Social Policy and Practice at University of Pennsylvania

The Master of Science in Nonprofit Leadership Program (NPL) at the University of Pennsylvania prepares nonprofit leaders and social entrepreneurs to guide organizations tackling some of the world's most complex social challenges. Learn to create social impact through thoughtful, inventive, and meaningful work in nonprofits, charitable foundations, international NGOs, and more. This program is ideal for existing nonprofit professionals, those looking to launch their careers, or career changers from other sectors. The curriculum is customizable and can meet the needs and interests of any potential student interested in a career in social impact no matter where they are in their career. The Master of Science in Nonprofit Leadership program is a 10 C.U. program, offered full-time (10-months), part-time (2.5 years), online, and on-campus. The University of Pennsylvania will waive the application fee for applicants to the MSNPL who are Bonner Scholars/Leaders, alumni, or staff. **Applicants who are successfully admitted into the program will receive a guaranteed \$10,000 one-time scholarship.**

Sue Perls, Coordinator, On-Campus MS in Nonprofit Leadership Program

Sue supports a variety of initiatives for current and prospective students, faculty, staff, and community partners. Sue previously worked for Service & Civic Engagement at Rider University. She coordinated community-engaged/service-learning programs, supported the Bonner Community Scholars program, and maintained and developed mutually beneficial partnerships with nonprofits in the Greater Trenton Area. Sue has provided a strategic vision for basic-needs initiatives in higher education and currently serves on the Affordability Task Force at Rowan University. Sue holds her MS in Higher Education Counseling/Student Affairs from West Chester University and her BA in Health & Exercise Science from Rowan University.



Open Space Session

Saturday, June 3 at 8:00 am to 10:00 am

Over breakfast, join a table and participate in one or more open space discussion(s), an informal conversation, utilizing the open space principles below.



Sign up using the QR code to suggest an open space topic and facilitate an informal discussion!



1

WHOEVER COMES ARE THE RIGHT PEOPLE

2

WHENEVER IT STARTS IS THE RIGHT TIME

3

WHATEVER HAPPENS IS THE ONLY THING THAT COULD HAVE

4

WHENEVER IT'S OVER, IT'S OVER

5

WHEREVER IT HAPPENS IS THE RIGHT PLACE

The Law of Personal Mobility

If you find yourself where you can't learn or contribute, move yourself to a place where you can. Find a space where you can find yourself thriving and learning. new things .

Notes



PLACES TO VISIT

ESSEX & PASSAIC COUNTY

*Van Vleck Gardens | 21 Van Vleck Street, Montclair
~ Public botanical garden*

*Montclair Art Museum | 3 S. Mountain Avenue, Montclair
~ Art exhibits*

*Alchemy Scent Bar | 30 Church Street, Montclair
~ Make your own scent perfume, candle, etc*

*The Clairidge | 486 Bloomfield Avenue, Montclair
~ Catch a movie at the local theater*

*Pinot's Palette | 351 Bloomfield Avenue, Montclair
~ Paint and Sip*

*American Dream | 1 American Dream Wy, East Rutherford
~ Shopping, Amusement Parks, Ice skating, etc.*

*Dave & Buster's | 310 Willowbrook Mall, Wayne
~ Arcade games*

*Turtle Back Zoo | 560 Northfield Ave, West Orange
~ Visit the animals, zip-lining, train ride
~ Connected to South Mountain Reservation and Mini Golf Safari*

*South Mountain Reservation | Cherry Ln, West Orange
~ Hiking trails, Paddle boats, Picnic area, Mile loop
Connected to Turtle Back Zoo and Mini Golf Safari*

*Essex County MiniGolf Safari | 9 Cherry Ln, West Orange
~ Mini Golf
~ Connected to South Mountain Reservation and Turtle Back Zoo*

*Eagle Rock Reservation | Eagle Rock Ave, West Orange
~ 9/11 memorial, Views of New York City, Picnic Area, Hiking Trails*





RESTAURANT LIST



\$: 10 - 15
 \$\$: 15 - 25
 \$\$\$: 25 +

MAIN COURSE

- | | |
|--|---|
| Noches De Colombia \$\$ Colombian Downtown Montclair | Sweet T's Southern Eatery \$\$\$ Soul Food Downtown Montclair |
| Ani Ramen \$\$ Japanese Downtown Montclair | Raymonds \$\$ American Downtown Montclair |
| Fauborg \$\$\$ French Downtown Montclair | Yard house \$\$ American Wayne |
| Tingas \$ Mexican Upper Montclair | Mighty Quinn's \$\$ Barbecue Clifton |
| Brick Lane Curry House \$\$ Indian Upper Montclair | Toros \$\$ Turkish Clifton |
| SLA Thai \$\$ Thai Upper Montclair | Bare Burger \$\$ American Downtown Montclair |
| Cuban Pete's \$\$ Cuban Downtown Montclair | |

DESSERT

- il laboratorio del gelato | \$ | Gelato | Upper Montclair
- The Little Daisy Bake Shop | \$\$ | Bakery | Upper Montclair
- Absolute Zero Ice Cream | \$ | Ice Cream Shop | Upper Montclair
- Boom Chia | \$\$ | Açai Bowls | Downtown Montclair
- Cookie Connect | \$ | Dessert Shop | Brookdale
- AppleGate | \$ | Ice Cream Shop | Montclair

QUICK EATS

- Order Details: Blanton Hall**
- Stephanie's bbq | \$\$ | Barbecue | Nutley
 - Anthony Francos | \$ | Italian | Little Falls
 - West Essex Diner | \$\$ | Diner | Fairfield
 - Imperial 46 restaurant | \$\$ | Japanese & Chinese | Woodland park

TRANSPORTATION

TRAIN:
 COST: ONE WAY TICKET- \$2.25, ROUND TRIP- \$4.50
 ROUTE: GET ON EITHER AT MONTCLAIR STATE STATION OR MONTCLAIR HEIGHTS STATION. TAKE THE TRAIN TILL UPPER MONTCLAIR STATION FOR UPPER MONTCLAIR EATS OR WALNUT STREET STATION FOR DOWNTOWN MONTCLAIR EATS AND WALK ABOUT 5 MINS TO RESTAURANT.

DRIVING:
 PARKING IS AVAILABLE ON THE STREET AND PAID PARKING LOTS ARE ALSO AVAILBE IN UPPER AND DOWNTOWN MONTCLAIR. OTHER RESTAURANTS IN CLIFTON, WAYNE AND BROOKDALE HAVE A PARKING LOT ON THE PREMISSES.

DRIVING:
 ANY RESTURANT LOCATION OUTSIDE OF UPPER MONTCLAIR AND DOWNTOWN MONTCLAIR MUST BE DRIVEN TO. IN GENRAL THE DRIVE SHOULD NOT BE MORE THAN 20 MINS.

Thank You!

The Bonner Foundation and Montclair would like to thank the following people who have worked very hard to make the 2023 Summer Leadership Institute a success.

MONTCLAIR SLI PLANNING TEAM, FACULTY, & STAFF

Aissatou Diallo
Ana Rita Mateo
Bill Neslin
Bryan Murdock
Connor Preston
Dana Natale
Daniela Chica
Emely Bryan
Erin Willner
Jess Kershenblatt
Jessica Pichardo
Jonathan Koppell
Jorge Padmore
Kaitlin Kurdya
Keiva-Neveah Edghill
Kevin Schafer
Krystal Woolston
Lauren Dinour
Lorraine Mota
Mariana Luna Martinez
Melanhy Navarro
Mikaela Guzman*
Nereida Delgado Garcia
Racheal Afriyie
Sara Duricko*
Sofia Perez

BONNER FOUNDATION STAFF & INTERNS

Andy Huerta
Ariane Hoy
Bobby Hackett
Bryan Wood
Chloe Vereen
Clifton Davis*
Elaine Wheeler
Jeniffer Gonzalez Reyes*
Liz Brandt*
Rachayita Shah
Rashel Bernal-Reyes

NATIONAL PARTNERS

Bard College
Bringing Theory to Practice
Civic Learning and Democratic
Engagement Coalition
Connect for Freedom
GivePulse
Global Citizen Year
Reading Partners
School for International Training
Quaker Voluntary Service

GRADUATE SCHOOL PARTNERS

Heinz College of Information Systems and
Public Policy at Carnegie Mellon University
Georgetown University's McCourt School of
Public Policy
O'Neill School of Public and Environmental
Affairs - IU Bloomington
NYU Wagner School of Public Service
Rollins School of Public Health at Emory
University
University of Arkansas Clinton School of Public
Service
University of Pennsylvania's M.S. Nonprofit
Leadership
University of Pennsylvania's Perleman School of
Medicine
Washington University in St. Louis - Brown
School

RESUME COACHES

Bobby Hackett
Daniela Chica
Christopher Lipari Paziienza*
Emely Bryan
Horacio Hernandez*
Ian McGinnity
Jasmine Rangel*
Jessica Pichardo
Michael Kalage
Timothy Krumreig*

Thank You!

PRESENTERS, SPEAKERS, & FACILITATORS

Abbey Fox
Aissatou Diallo
Alegria Cloma*
Aleisha Martinez Sandoval
Aleisha Sawyer
Alex Thomas
Ali Boak
Allison Schultz
Amelia Terry
Andy Huerta
Anna Sherrill
Ariane Hoy
Arianna Maglio
Ashlee Martellacci
Baye Adolfo-Wilson
Billy Wooten
Bobby Hackett
Brittany Aydelotte
Brittney Chong*
Brook Klinger
Bryan Murdock
Bryan Wood
Carol Geary Schneider
Caryn McTighe Musil
Chloe Vereen
Christabelle Robinson
Christopher Lipari Pazienza*
Clifton Davis
Daniela Chica
Donelle Durham
Felicia Comuniello*
Felicia Deas
Francesca McDaniel
Gloria Lwin
Horacio Hernandez*
J.P. Liddy
Jasmine Rangel*
Jason Williams
Jeniffer Gonzalez Reyes
Jennifer Lyons
Jennifer Bragger
Jess Kershenblatt
Jessica Bacon
Jessica Pichardo
Jessie Deal
Jonathan Koppell

Julian Paul Keenan
Kate Leonard
Kate McCaffrey
Kathie Shiba
Kayla McKay
Keiva-Neveah Edghill
Keonna Elliott
Khalaf Gabsi
Kiro Pinedo-Lopez
Kisha Burton
Krystal Woolston
Laura Lakusta
Lauren Dinner
Lesley Sylvan
Liz Brandt
Lorraine Mota
Mariana Luna Martinez
Matthew Little
Megan Teitelbaum
Melanhy Navarro
Mikaela Guzman
Mimi Feliciano
Mindy Nierenberg
Morgan Jennings
Nellie Pou
Paul Schadewald
Rachayita Shah
Raj Toor*
Racheal Afriyie
Raquel Morales
Rashel Bernal-Reyes
Ronan Goulden
Ryan Vaughan
Sarah Lueken
Sarah Rohrer
Sidney Saxen
Sofia Perez
Susan Baglieri
Svetlana Shpiegel
Tammie Green
Taylor Hibel
Thom Dawkins
Timothy Krumreig*
Uri Medellin
Zenaida Peterson
Zuzanna Myszko
* = *Bonner Alumni*

Expectations & Emergencies

We expect that all participants, regardless of role, fully engage in all aspects of the Bonner Summer Leadership Institute (SLI). SLI participants serve as representatives of sponsoring campuses, the Bonner Program, and the Bonner Foundation. As such all participants will be viewed as adults responsible for their personal actions. Students who do not adhere to these standards will be held accountable by the sponsoring Bonner Programs campuses. While on campus, participants must follow all rules and regulations of Montclair State University, [as outlined by the Office of Residence Life](#), and the expectations of the Bonner Summer Leadership Institute (SLI):

- Alcohol or illegal drug use of any kind will NOT be tolerated.
- Montclair is a smoke-free campus. There is no smoking of any kind allowed on the Montclair campus.

Should a participant be found intoxicated or with any alcoholic drinks, that student will be held for the charges, at minimum, against the regulations of the sponsoring school and Montclair State University. In the event a participant is found to be in violation of any college policies (including damage to property), at minimum, that student will be asked to leave and, additionally, will be asked to leave and, additionally, will be held responsible to Montclair State University for costs. Should a participant be asked to leave the conference, it will be that student's personal responsibility to arrange and pay for return transportation. Should a situation warrant criminal charges, the necessary authorities will be notified. We ask and expect all students and staff to participate fully in all aspects of the Summer Leadership Institute. However, participation in social activities is optional. We are together for only a few days and want to build community in a safe, responsible manner. Please recognize that we view all participants as adults responsible for personal actions and as representatives of sponsoring campuses, the Bonner Program, and the Bonner Foundation. Students who do not adhere to these standards will be held accountable by the sponsoring Bonner Programs and campuses.

NOTES ON HOUSING

Montclair swipe cards are obtained by guests during registration and are returned to the college at check-out. If an additional key is required after registration, proper identification must be shown to the office staff and a staff member of the program must sign for the additional key.

For the safety of residents and of resident's belongings, locking of individual room doors is important. Doors should be locked when residents are sleeping. It is the responsibility of the residents to carry a room key at all times and not to lend keys to others without the specific consent of all those who live in the room.

In an attempt to reinforce the responsibility of carrying a room key, people who either lose keys or have them stolen will be issued a spare key and will be charged \$50.00 for the lock change. In addition, a borrowed key may not be held out for more than 48 hours, or a lock change will be administratively activated at the resident's expense.

COVID-19 PROTOCOLS

Guests are expected to monitor their own health status and refrain from visiting campus when symptomatic or when having tested positive for COVID-19 within the last seven days.

If You Have COVID-like Symptoms

Despite vaccination and/or previous COVID-19 infection, members of the community may become infected with COVID-19. If you are exposed to COVID-19 or experiencing symptoms, adhere to the following quarantine protocols:

- Isolate. Remain in your assigned room if you are symptomatic. Do not attend any functions. New accommodations will be arranged if warranted.

Expectations & Emergencies

- If you feel you need medical attention, contact your healthcare provider or visit the [AFC Urgent Care and Walk-In Clinic](#) located 5 minutes from Montclair State University.

Health-Related Emergencies

Anyone experiencing any health-related abnormalities or health-related emergencies should either contact their healthcare provider or could visit the AFC Urgent Care and Walk-In Clinic (afcurgentcare.com) located 5 minutes from Montclair State University.

Masks

Effective [May 11, 2023](#) wearing of masks is up to individual preferences. SLI attendees are encouraged to wear a mask when in close proximity, but recognize this decision is an individual one. Attendees should also consult with the guidelines of their own Bonner Program and institution. Additionally, we have implemented a conference policy in which individuals will indicate their comfort with social contact, using a red, yellow, or green sticker on their name tags (*Red = maintain a 6-ft distance, Yellow = handshake is ok, Green = handshake or hugs are ok*).

Additional Notes on Housing & Meals:

- Participants will be held personally accountable for any damage to Montclair rooms and common areas and charged for the cost of necessary repairs.
- Montclair and the Bonner Foundation are not responsible for any personal items that are lost or stolen.
- During registration, participants will receive a card which will give access to meals and conference buildings for the duration of the event.
- Participants who lose their room/meal card or have them stolen will be issued a spare card and will be charged \$50.00. If you should misplace your card, please contact your home institution's representative who will make arrangements to replace it, or you will be charged.

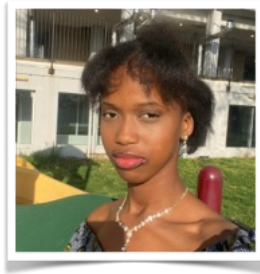
RECREATION CENTER REGULATIONS

- Food and Drinks are permitted in the lounge area only.
- Proper attire is to be worn in all activity areas (this includes the gym and pool area). Items prohibited are: Crocs, open toed shoes, boots, cleats, shoes with wheels, bikinis, and speedos.
- All clothing being worn in the pool must be clean.
- Students are free to bring their own towels.
- Students not in proper attire will not be permitted in the gym or pool area.

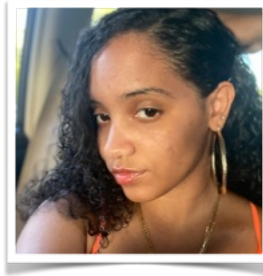


If you have issues, please contact Sara Duricko, Graduate Student Assistant for Montclair's Center for Community Engagement, at 856-313-5795.

Thank you to the Montclair SLI Team!



Aissatou Diallo



Ana Rita Mateo



Bryan Murdock



Daniela Chica



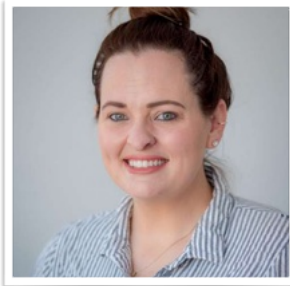
Jess Kershenblatt



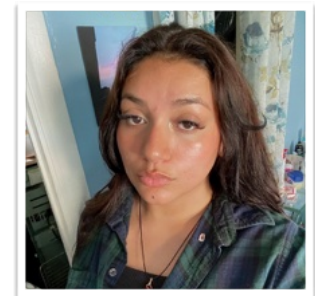
Jessica Pichardo



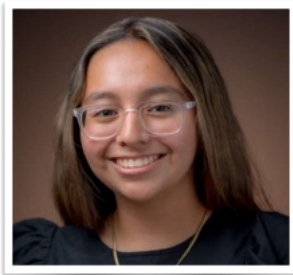
Keiva-Neveah Edghill



Krystal Woolston



Lorraine Mota

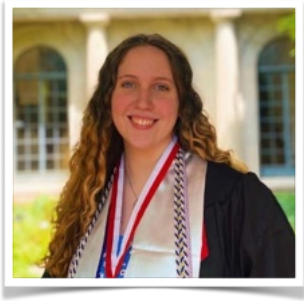


Mariana Luna Martinez

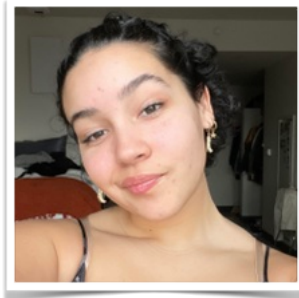


Mikaela Guzman

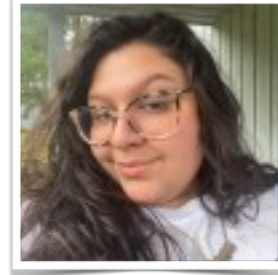
Thank you to the Montclair SLI Team!



Sara Duricko



Sofia Perez



Melanhy Navarro



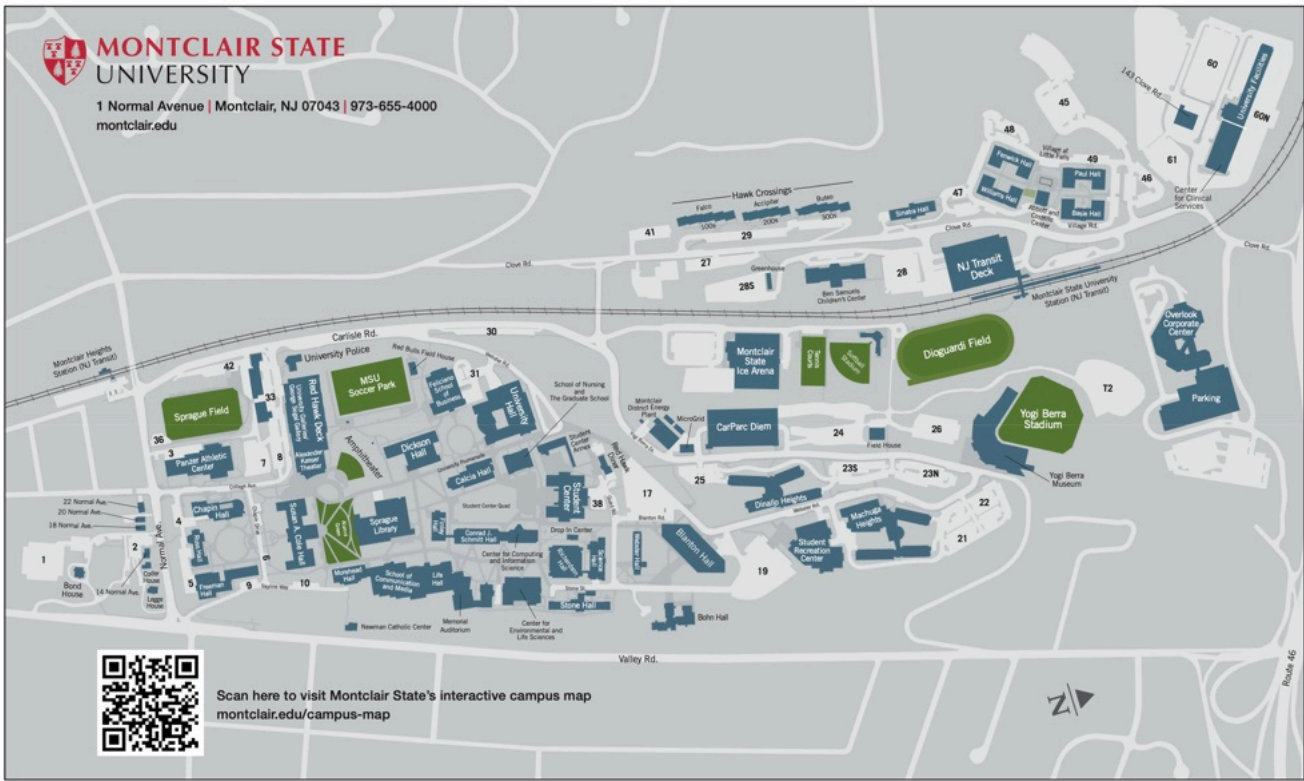
Emely Bryan



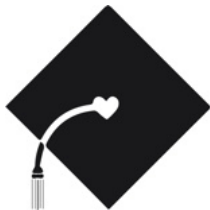
Nereida Delgado Garcia



Racheal Afriyie



**Click this QR code to use
an interactive map
on your phone or device.**



Thank you for joining us!

**Learn more at www.bonner.org
www.montclair.edu**