

SPONSORED

OUT & ABOUT

with MELISSA STOTTMANN and the FUJIFILM X-T1



FUJIFILM X-T1
in black and graphite silver

We put a FUJIFILM X-T1 in the hands of Melissa Stottmann and turned her loose for an afternoon.



MELISSA STOTTMANN
is a newborn, children, and family photographer from Wilmington, Delaware. She

loves to shoot and share everyday images of her

family and often chooses a wide angle lens for its more documentary feel. Melissa is the Instructor of Clickin Mom University's "Shooting 212: Photographing Your Family's Everyday" and a contributor to Click's Product Blog. melissastottmannphotography.com

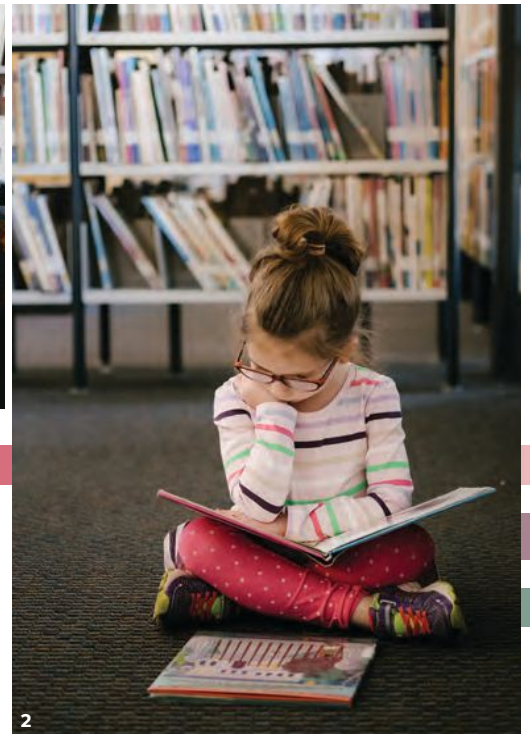


1:45 PM - LIBRARY

1. This camera is light as a feather and so easy to take anywhere. I turned on the Astia Film Simulation mode to soften color and contrast, which helped to subdue all those bright colors. Abby had been balancing things on her head all day, but the books kept falling. We decided to sit and give it a try.
EXPOSURE: f/3.2, 1/125-second, ISO 320

2. Aisles of books kept blocking the light, so we found a bright window. I still had to push the ISO to 1,250, but the image is virtually grain-free! I switched to the 60mm lens for a more intimate feeling. Abby is just learning to read, so we sit and make sure books have plenty of words she knows.
EXPOSURE: f/2.4, 1/125-second, ISO 1250

3. Owen had enough and was ready to hit the road! Since the X-T1 renders exposure as I change the settings (both on the LCD and viewfinder), I was able to focus more on the kiddos and less on taking pictures while knowing I'd get fabulous shots. It also meant I could hold the camera at my waist and be less conspicuous.
EXPOSURE: f/2.8, 1/125-second, ISO 1250



"Since the X-T1 RENDERS EXPOSURE as I change the settings, I WAS ABLE TO FOCUS MORE ON THE KIDDOS"



4. I knew the kids would be everywhere, so I switched to the 18-55mm lens, my favorite X-T1 go-to because of its flexibility and wide aperture. It's the only camera I'm comfortable shooting in aperture-priority mode because I can set a minimum shutter speed to keep things crisp while the camera does the rest of the work.
EXPOSURE: f/4.5, 1/250-second, ISO 1000

5. The kids were moving around so fast that being able to zoom and focus quickly was fantastic! Focus Assist zooms the image in the display so you KNOW you have sharp focus in manual or auto mode. We needed a birthday gift for my mom, and Abby insisted on picking out the plant.
EXPOSURE: f/2.8, 1/250-second, ISO 1000

6. Abby and I are mesmerized by terrariums. There were so many shoppers, landscape planners, and even a bride planning her flowers—I had to move quickly and make sure my kids didn't knock over anything. I used Focus Assist again so I could keep my eyes on my kids and still make sure my images were sharp.
EXPOSURE: f/2.8, 1/250-second, ISO 1000

3:30PM - GARDEN STORE

4:30PM - ICE CREAM SHOP!



7. After making their way smoothly around town, the kids decided we needed some ice cream. As they dug in, I played around with Face Detection. It was so neat! It turned off the focal points and chose the faces in the image perfectly. This'll be great for selfies with the kids.
EXPOSURE: f/2.8, 1/250-second, ISO 1000



8. Since the light was low from the rainy weather, and the overhead lighting was competing too much, I switched over to Black and White Film Simulation mode and used Focus Assist to make sure Owen was in sharp focus. (He's so tiny that he could be easily lost in the frame.) I connected my phone through Fujifilm's Photo Receiver app and instantly transferred the image and texted it to my husband so he could see what he was missing.
EXPOSURE: f/4.0, 1/125-second, ISO 1250

FUJIFILM
X-T1

FujifilmClickXseries.com



facebook.com/FujifilmCameras
YouTube.com/FujifilmUS
twitter.com/FujifilmUS
instagram.com/fujifilm_northamerica
hilus.xseries@fujifilm.com