

A photograph of a man and a young child standing outdoors. The man, on the left, is wearing a blue baseball cap and a light blue surgical face mask. The child, on the right, has blonde hair and is wearing a yellow sweater and a white face mask with a colorful pattern of small cars. The background is a blurred outdoor setting with a white fence. Overlaid on the image is the title 'Coronavirus Covid-19' in large white text, and a bulleted list in the bottom right corner.

Coronavirus Covid-19

- Update 13
- July 1, 2020
- Tender Care Pediatric Services

Tender Care Actions over Past Week

Minimize interaction – Social distancing , hand washing and . safer at home are helping Colorado keep cases low. Pandemic continues across Southwest with record numbers, slides 3 and 4.

Masks are critical to managing the pandemic. Encourage families to comply with Colorado's face mask in public spaces mandate. Information on Contact Tracing slides 12, 13 and 14.

Personal protective equipment is a necessary part of direct care and community living. Innovative way to clean PPE using InstaPot slide 9. Treatment guidelines <https://www.covid19treatmentguidelines.nih.gov/introduction/>

Risk assessment and notification – Temperature assessment in all homes. Consider purchasing eye protection that is comfortable for your own use. Be prepared in your own homes, now is time to purchase back up thermometer, tylenol and motrin; cleaning supplies for Fall- Winter. Risks and benefits of travel in slide 10.

Home care nursing families Private Duty Nursing (PDN) homes- Cases on hold. Parents still electing to restrict staff to 'TCPS' only, not employed at medical centers.

Dynamic workforce – Each and every one of you is highly valued. If you are feeling stressed, please reach out to member of the leadership team.

Milestones - last week of June, 2020

- Global Coronavirus Death Toll Nears 500,000
- 125,000 deaths in the United States, more than twice the deaths as Brazil, the next most-stricken country with about 56,000 dead.
- The U.S. hit its highest single-day count of confirmed coronavirus cases of 40,135 on Friday, June 26th.
- Texas reported nearly [6,000 new cases](#) of COVID-19 on Thursday, June 25th, a single-day record for the state.
- Arizona reported 3,428 new cases, hospitals are nearing capacity.
- This week, both Connecticut and Arizona conducted 1.7 tests per 1,000 people, according to [Johns Hopkins University's testing tracker](#). Yet, while Connecticut had 1.3% positive, Arizona had 22.1% positive for COVID-19.



Confirmed coronavirus cases in the United States surpassed 2.5 million on Sunday, June 28.

- After falling as low as 20,338 new cases on June 9, the national weekly average is currently 29,681 new cases per day and still increasing exponentially.
- Vice President Pence on Sunday encouraged Americans to wear face masks, practice social distancing and stay away from seniors to protect them amid a surge in coronavirus infections that has pushed the national case total past 2.5 million.



Colorado - 3 day moving average 271 cases (06/27/2020)

Level 2: Safer at Home and in the Vast, Great Outdoors.

- Critical businesses are still open.
- Non-critical businesses are open with restrictions.
- Stay at home as much as possible.
- Practice good hygiene. Wash your hands frequently and don't touch your face.
- Wear a face covering or mask when you leave your home.
- Connect with neighbors and loved ones virtually.



Weld County still higher than Larimer

- Larimer County 204 cases /100,000 residents
- Weld County 887 cases /100,000 residents



Testing in Larimer County

- 7.9 % of population tested
- 3.6 % positive
- 204 cases /100,000 residents
- UC Health - Two types of tests are available: the nasal swab test, which detects the presence of the COVID-19 virus in the nasal passages, and the blood test, which measures for the presence of antibodies.
- UC Health -The cost for the COVID-19 antibody test is \$100 and \$85 for the PCR (nasal swab) test to determine the presence of the virus.
- Banner Health - Banner's self-pay rate for a COVID-19 test is \$75. Banner will not deny patients based on their ability to pay.
- Many insurance providers cover COVID-19 testing, check with your insurance for details.

The logo for UC Health, featuring the word "uchealth" in a lowercase, red, sans-serif font. A thin red horizontal line is positioned below the text, extending slightly beyond the left and right edges of the letters.

Mapping Covid-19 across US when considering travel

- Tracks new cases in last 14 days
- <https://www.dartmouthatlas.org/covid-19/hrr-mapping/#new-cases>



DECONTAMINATE PPE AT HOME

The [US Department of Homeland Security](#) developed a process for people to “decontaminate” personal protective equipment (PPE), including N95 respirators and masks, at home using only a fairly common kitchen appliance, a programmable multicooker or pressure cooker. Multicookers, such as the Instant Pot, have gained popularity in the United States and elsewhere in recent years. In light of the limited supply of various types of PPE, scientists at DHS developed a process that would enable people to clean their PPE at home so it can be reused safely. Multicookers enable users to generate moist heat, which has been identified by the US CDC as an effective method for killing the SARS-CoV-2 virus. The [instructions](#) —and accompanying video—direct users to place water in the multicooker and insert a wire rack (to prevent the respirator from sitting in the water). The respirator (up to 3 at a time) should be placed inside a paper bag and set on the rack, and the unit should be set at 149°F (65°C) for 30 minutes. Once the cycle is complete, users should remove the bag and open it for 1 hour to allow the respirators to cool and dry.

Video - <https://www.dhs.gov/publication/st-multicooker-decontamination-n95-respirators>

RISKS AND BENEFITS



CONSIDERATIONS FOR SOCIAL ACTIVITIES DURING COVID-19



FOR ALL ACTIVITIES

- Stay home when you are sick or if you think you have been exposed.
- Wear a mask when feasible.
- Keep at least 6 feet between yourself and non-household members.
- Clean your hands frequently.



PARTIES
REC. SPORTS
RECEPTIONS

Some activities can run the entire risk spectrum.
More people in a smaller space equals a higher risk.

Uneven Costs of Social Distancing

- **Even before COVID-19 hit, only 61 percent of all American families had \$400 of emergency savings.** Many low-income workers are not salaried, but work hourly or are part of the “gig” economy. They are more likely to work in retail and service occupations, such as restaurants and salons, and cannot set up home offices to work remotely.
- For many, the #StayHome directive is not an option: ‘home’ is not a safe, comfortable place to be. Many poor families live in cramped, low-quality, uncomfortable and even dangerous dwellings, making it more difficult to shelter in place. Some of this housing also aggravates the asthma symptoms of their children, as mold and vermin infestation trigger episodes. Multigenerational and complex households are also much more common among the poor: in Italy this proved to be a calamitous challenge.
- **Outbreaks of violence or addictive behaviors occur in times of distress.** Indeed, there are already reports of spikes in child abuse and domestic violence, which means families stuck at home already face immediate physical danger.

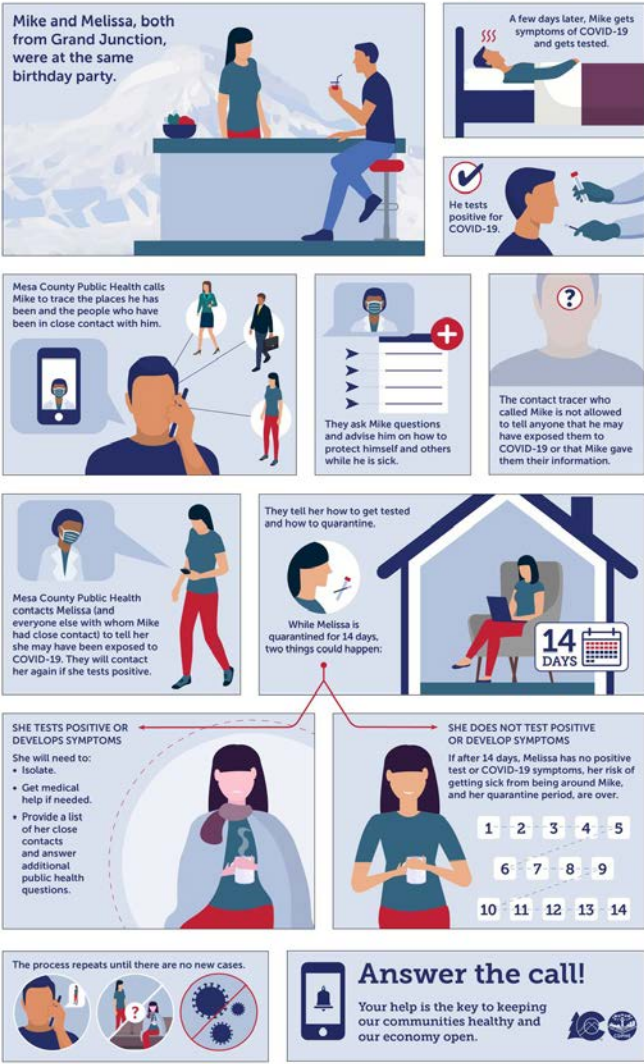
Contact Tracing

Someone who was within 6 feet of an infected person for at least 15 minutes starting from 2 days before illness onset (or, for asymptomatic patients, 2 days prior to specimen collection) until the time the patient is isolated.

Factors to consider when defining close contact include proximity, the duration of exposure, whether the individual has symptoms and whether either the case patient contact were wearing an N95 respirator (which can efficiently block respiratory secretions). At this time, differential determination of close contact for those using fabric face coverings is not recommended.

In healthcare settings, it is reasonable to define a prolonged exposure as any exposure greater than 15 minutes because the contact is someone who is ill.

How contact tracing works



An illustration on a dark blue background featuring a large, semi-transparent blue circle. Inside the circle, a central white silhouette of a person stands within a white rectangular frame. Six lines radiate from this central figure to six smaller white circular icons, each containing a stylized human figure. These icons are arranged in a circular pattern around the central figure. Each of these six icons is further connected by a line to a larger, more complex white icon that resembles a coronavirus particle, complete with spike proteins. The overall composition visually links a central individual to their contacts and the potential for viral transmission.

Free 6 hour course on Contact Tracing

Supply of N 95 Masks

The White House Supply Chain Task Force projects the nation will have enough N95 masks to meet pandemic demand for July through October, according to a [report](#) released to the Senate Homeland Security and Governmental Affairs Committee. (June 10, 2020)



References

- Colorado <https://covid19.colorado.gov/>
- Larimer County <https://www.larimer.org/health/communicable-disease/coronavirus-covid-19/larimer-county-positive-covid-19-numbers>
- Social Distancing <https://coronavirus.jhu.edu/from-our-experts/the-unequal-cost-of-social-distancing>
- Decontamination <https://www.dhs.gov/publication/st-multicooker-decontamination-n95-respirators>
- PPE Supply – White House Task Force <https://www.hassan.senate.gov/imo/media/doc/SCTF%20Demand%20PPE%20Chart.pdf>