

# 2014-15 ANNUAL REPORT

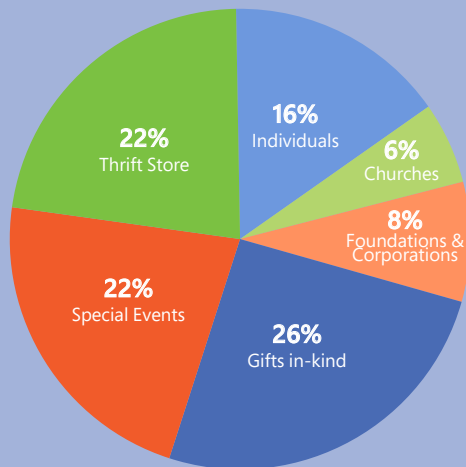
We **LOVE** students and their families through consistent presence as we **LISTEN** to the deeper needs in the community and **LEARN** from those we serve. Our goal is to ensure all students are **KNOWN, VALUED, AFFIRMED** and are building confidence in the classroom and among their peers, with opportunity to **BECOME** an integral part of their community.

## FINANCIAL REPORT

Between 2014 and 2015...

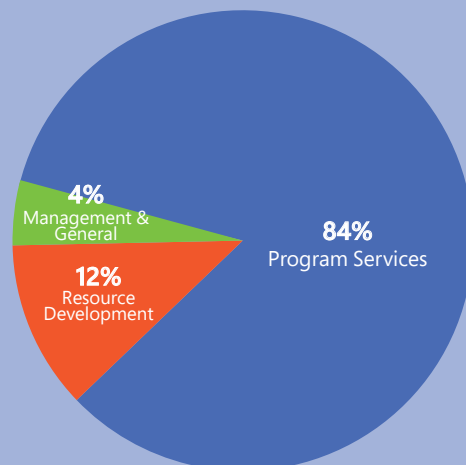
For the 12 months ending June 30, 2015 Jubilee REACH saw a 25% increase in revenue

### REVENUE



Individuals	\$577,778	16%
Churches	\$213,776	6%
Foundations & Corporations	\$312,818	8%
Gifts in-kind	\$951,970	26%
Special Events	\$827,696	22%
Thrift Store	\$837,792	22%
<b>TOTAL</b>	<b>\$3,721,830</b>	<b>100%</b>

### EXPENSES



Management & General	\$151,754	4%
Resource Development	\$440,187	12%
Program Services	\$3,124,143	84%
<b>TOTAL</b>	<b>\$3,716,084</b>	<b>100%</b>



### LOVE students and families

Jubilee REACH engaged **1,835** students during the 2014-15 school year in **17** afterschool sports and clubs. We are set to **expand in 2015-16**, serving 14 schools within Bellevue School District and launching college and career readiness support at Sammamish High School.



### LISTEN to the deeper needs in the community

In the 2014-15 school year, **935** volunteers served **21,255** hours with Jubilee REACH this year, meeting the needs of our community through compassionately delivered service. The impact of Jubilee REACH volunteers was felt this summer on Jubilee Service Day, when **2,490** volunteers beautified our schools and served at local homes in need of repair.



### LEARN from those we serve

Jubilee REACH partnered with local businesses, churches, Bellevue School District and area nonprofits to step in the gap to provide a hand up for those in need.

During 2015, Jubilee REACH changed the fiscal year end from December 31 to June 30. An audit was completed for the 18 month period ending on June 30, 2015 and is available on our website or upon request.

## Ensuring every student is **KNOWN** and **LOVED**

Site Coaches lead the way for our service in the Bellevue School District. At Odle Middle School, Jubilee REACH mentoring is shifting the culture among underperforming students.

*"My mentor Stacie is like a **big sister**," Odle student Emily said, "I love having her always there for me."*

Thirty-three mentors connected with 60 Odle students this year, piloting a service that will soon be offered at all 14 schools we serve.

## **AFFIRMING** students, building confidence in the classroom

Students participating with Jubilee REACH afterschool services build strong connections with peers and find trusted adult allies in our Site Coaches. Nearly 85% of 582 students polled either agreed or strongly agreed they feel comfortable disclosing personal and academic problems to their Site Coach.

## Building **COMMUNITY** in and around schools

Our partners include Bellevue School District, civic leadership, the faith community, local businesses and other nonprofits. Encourage your friends and family, employer, church leaders and neighbors to learn more about Jubilee REACH and join us in building a vibrant and healthy community!

