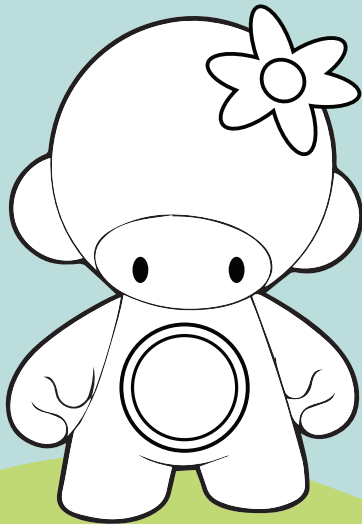


nübi

ACTIVITY BOOK

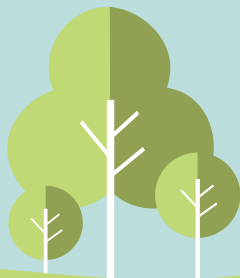
MEET NÜBI

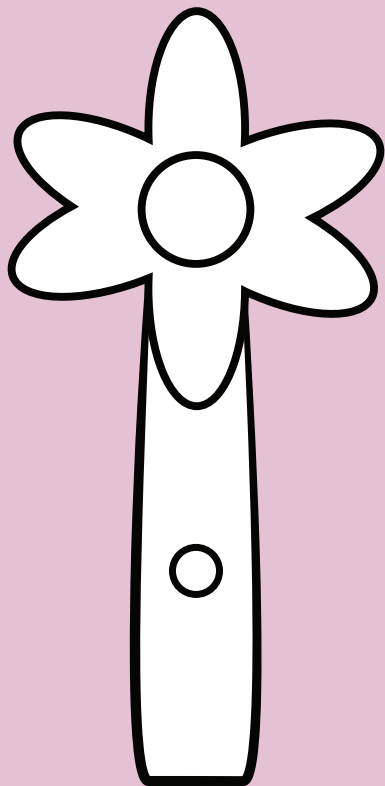


Nübi is new to our planet and eager to learn all about color, music, hot, cold, and, well...**everything!**

Your job is to **teach** Nübi all about our world.

Are you ready?





MAGIC FLOWER

The Magic Flower is how you teach Nübi.

Touch the Magic Flower to one or more Nübicards.

Then, **touch the magic flower to the flower on Nübi's head** to teach Nübi all about our world.



NÜBICARDS

There are 4 kinds of Nübicards.



Program
Nübicard



Sense
Nübicard



Action
Nübicard



Game
Nübicard



NEW LESSON



IF NÜBI SENSES...

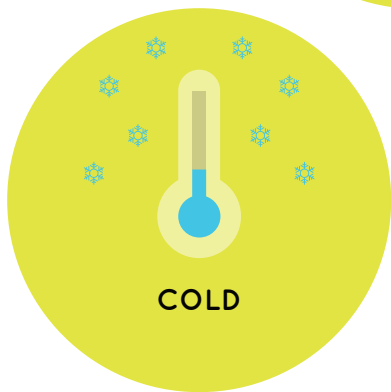


**START
RECORDING**

PROGRAM NÜBICARDS

Program Nübicards let you teach lessons to Nübi by creating “if” and “then” statements.

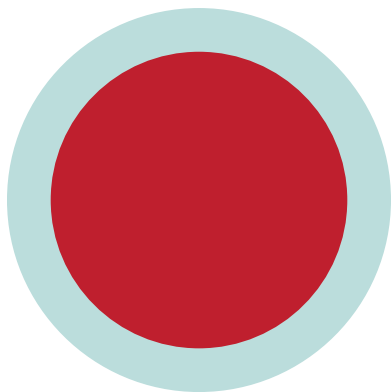
For example, you could teach Nübi that **IF** it feels cold **THEN** turn blue and say “brrrrrrr”.



SENSE NÜBICARDS

Sense Nübicards work with Program Nübicards to find out how Nübi is feeling.

For example, you can teach Nübi how to react when it's feeling **hot**, **cold**, **light**, **dark**, or even when there are **other Nübis close by**.



PLAY
FUNNY NOISE



PLAY
E

ACTION NÜBICARDS

Action Nübicards tell Nübi what to do.

They can work by themselves or with Program Nübicards.

Use Action Nübicards to have Nübi **make funny sounds, talk, turn colors, and play music.**



GAME NÜBICARDS

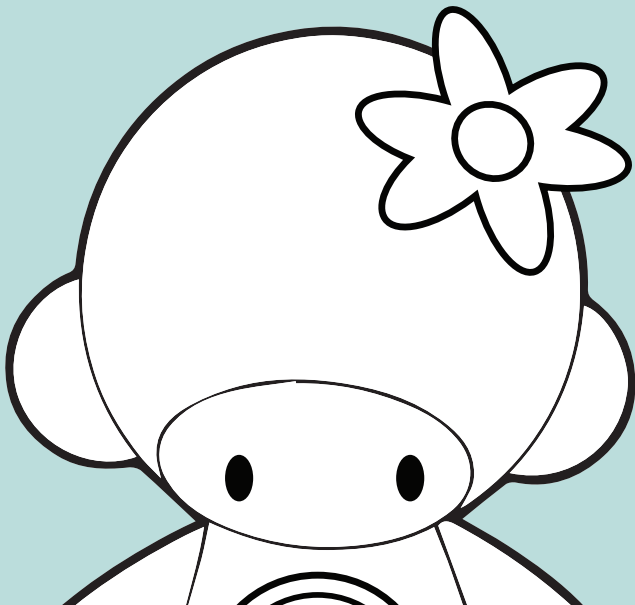
Sometimes Nübi just wants to have fun.

Game Nübicards tell Nübi it's time to play.

You can **go on adventure** with Nübi, have a **sing-along**, and play the **color matching** game, "Nübi Says"

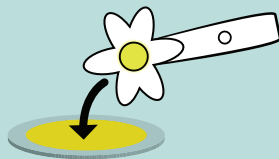
LESSON 1

Teach Nübi “Yellow”



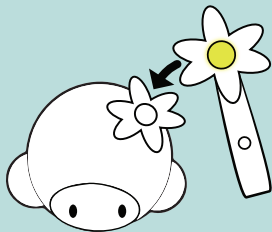
1

Touch and hold the Magic Flower to the yellow Action Nübicard.



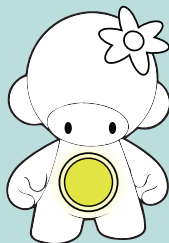
2

Touch the Magic Flower to the flower on Nübi's head.



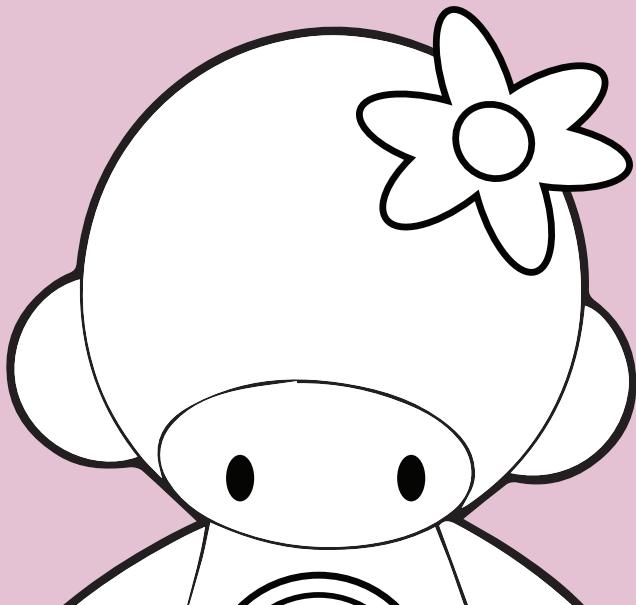
3

See Nübi glow yellow!



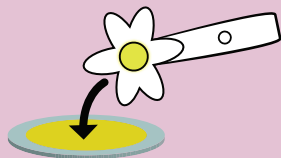
LESSON 2

Teach Nübi to mix colors



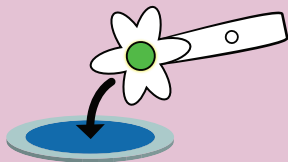
1

Touch and hold the Magic Flower to the yellow Nübicard.



2

Touch and hold the Magic Flower to the blue Nübicard to mix blue and yellow. Watch the Magic Flower turn green!



3

Touch the Magic Flower to the flower on Nübi's head and see Nübi glow green!



NOT IN
PROTOTYPE

OTHER LESSONS

While not included in our prototype, Nübi can learn to react to light, dark, hot, cold, sound, motion, and even other Nübis!

NOT IN
PROTOTYPE

PROGRAMMING

For more advanced play, Nübi can be programmed using Program Nübi cards.

For example, you could have Nübi play a lullabye, say goodnight, and act as a night light when the lights go out. Program Nübicards combine unlimited creativity with programming to teach STEM principles.

NOT IN
PROTOTYPE

GAMES

For more casual learning and younger audiences, Nübi can play color theory, music theory, and imagination-based games.

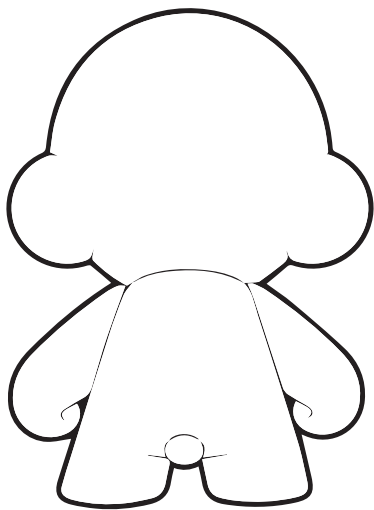
NOT IN
PROTOTYPE

ADD-ONS

To keep Nübi fresh, “add-on” Nübicards can be purchased.

These Nübicards will add extra programming features, senses, actions, and games to Nübi.

Add-ons can be purchased via the meetnubi.com website.



nübi

www.meetnubi.com