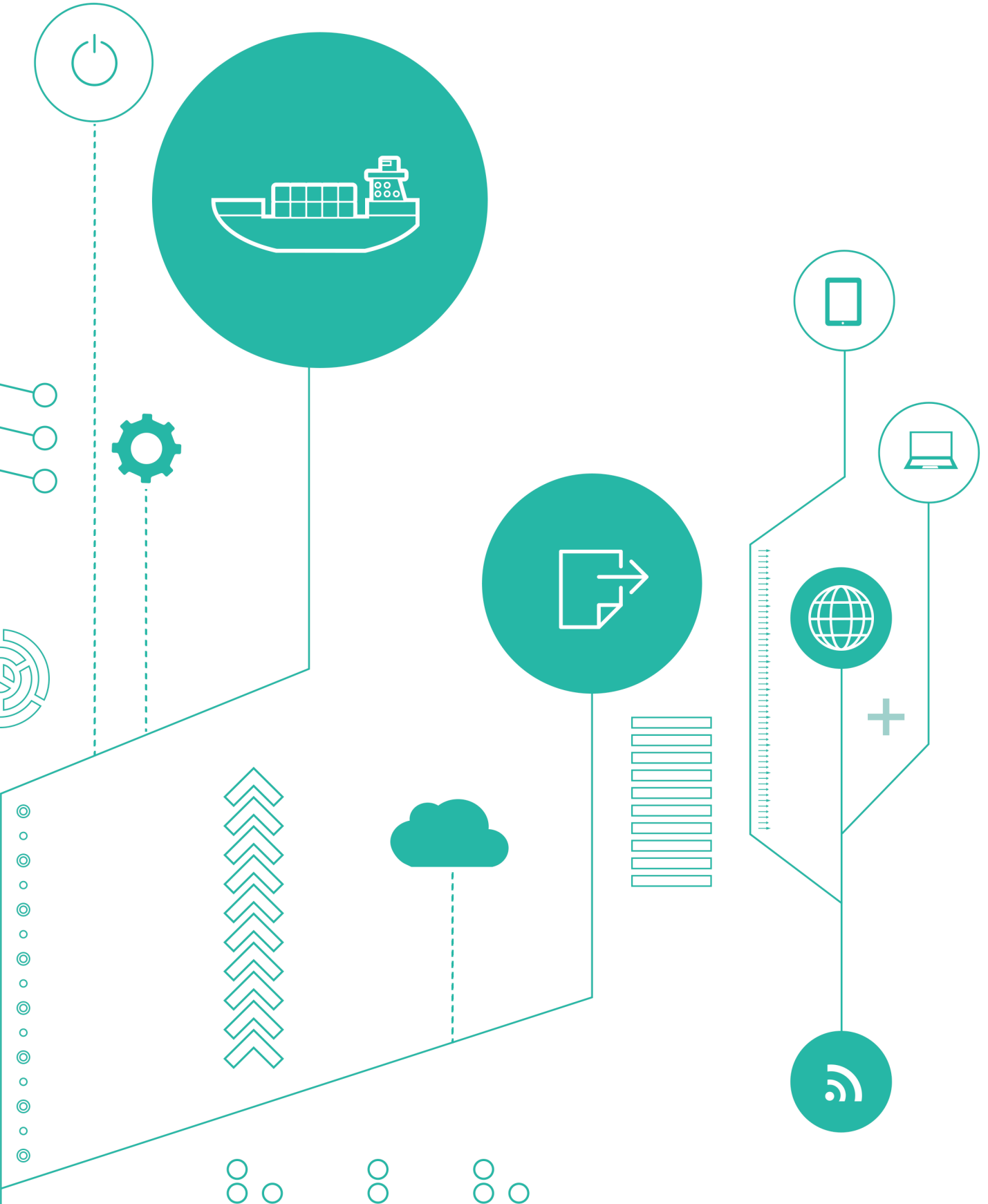


TRADEWEB™





TRADEWEB™

A SOPHISTICATED SUITE OF SOLUTIONS THAT UNDERSTAND YOUR NEED FOR SPEED AND SIMPLICITY.

When it comes to making shipments, the last thing you want is any hold-ups. Filling out forms, collating reports, learning new programmes, integrating with existing systems and knowledge, software updates and upgrades, staffing and costs can all slow your trade declarations process - unless you're using CrimsonLogic's TradeWeb™ solutions.

Unlike other systems, TradeWeb™ understands every facet of the declarations procedure as well as your business processes to provide a suite of solutions that work smoothly and immediately, at all times.

In terms of cost, ease-of-use, technological sophistication, integration with existing systems, security, 24-hour support and future growth, TradeWeb™ is the clear winner when it comes to declarations and customs clearance.

TRADEWEB™ SOLUTIONS FIT YOUR BUSINESS NEEDS TODAY AND TOMORROW.

No matter whether you make thousands of declarations a day through a team of staff spread across different offices or just a couple a month by yourself, TradeWeb™ has the solution that fits your set-up and requirements, perfectly.

Powered by the very latest technologies, developed and fine-tuned over years of experience in the industry, TradeWeb™ is designed to grow with you as your business expands.

TRADEWEB™: THE COST-EFFECTIVE DECLARATIONS SOLUTION YOU CAN'T AFFORD TO IGNORE.

TradeWeb™ provides highly efficient, supremely effective, user-focused solutions that make few demands on your business. Once installed they require little additional resources, learning, support or cost - no matter which TradeWeb™ solution you choose.

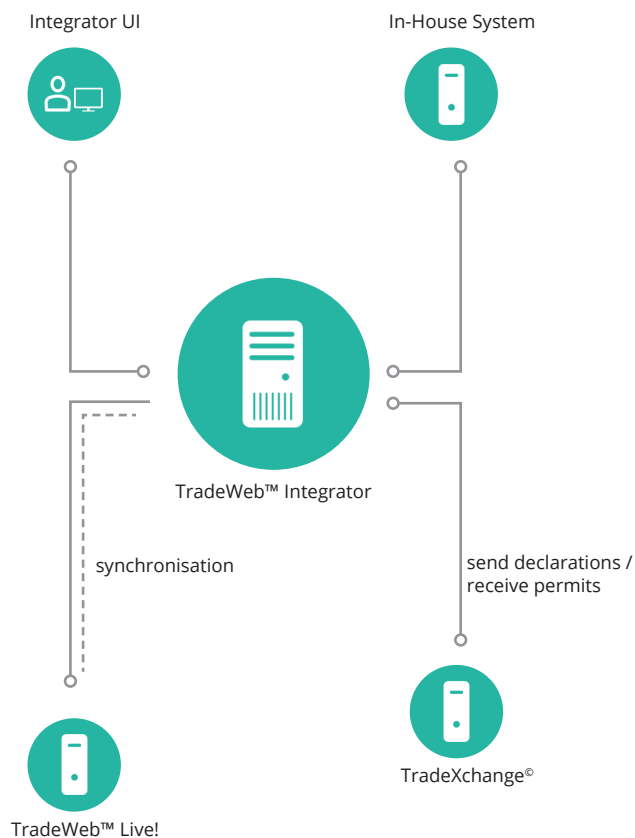
TRADEWEB™ INTEGRATOR

The in-house systems integration solution

TradeWeb™ Integrator is an add-on module to our TradeWeb™ Live! and TradeWeb™ Enterprise solutions. As such, it integrates TradeWeb™ with your existing in-house systems (Freight Management System, Warehouse Management System, ERP System and others) for simple, seamless and speedy trade declarations.

Ideal for those who submit and obtain trade permits in large volumes, TradeWeb™ Integrator is a host-to-host solution that not only saves and reuses data to eradicate human input error, it also automatically sends, receives and validates trade declarations to the Singapore regulatory bodies.

TradeWeb™ Integrator allows faster permit clearances, more effective use of human resources and overall increased business efficiency.



Suitable for:

- Company that has an in-house IT team
- Company that would like to create customized TradeNet® declaration user interface for its declarants
- Company that has a centralized in-house systems (Freight Management System, Warehouse Management System, ERP System and others)
- Company that seeks to reuse data from in-house system into trade declaration for automation
- Company that seeks to have permit data flow back into its in-house system for completeness
- Company with a Local Area Network (LAN) infrastructure
- Company with reliable moderate to fast Internet connection

TradeWeb™ Integrator at a glance:

- Seamless integration with existing in-house systems
- Platform-independent
- Host-to-host connection
- Self-automated declarations
- Saves on data re-entry and eradicates manual input error

System Requirements:

Kindly contact us at (65) 6887 7333 or sales@crimsonlogic-etrade.com for detailed information.

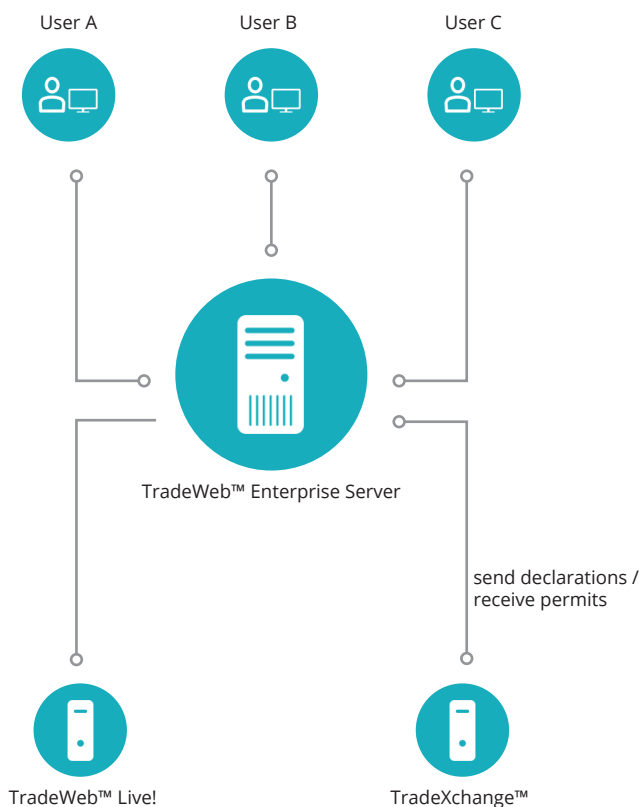
TRADEWEB™ ENTERPRISE

The desktop and web-based combined solution

TradeWeb™ Enterprise is CrimsonLogic's trade declaration solution aimed at the high volume users. It is a unique combination of TradeWeb™ Live! and TradeWeb™ Desktop, giving you the best of both worlds in one streamlined application.

TradeWeb™ Enterprise is a platform independent solution that supports multiple PCs. It can be installed in any enterprise class server within a corporate LAN, and supports multiple declarants via web browser access. With an intuitive graphical interface and innovative navigation, TradeWeb™ Enterprise is both feature-rich and easy to use.

While the software comes ready-to-deploy with a default Portal, Application Server and Database, it is also customizable to make use of existing system you may have installed.



Suitable for:

- Company that has an in-house IT team
- Company with a Local Area Network (LAN) infrastructure
- Company that is prepared to house the TradeWeb™ Enterprise server
- Company that has many declarants
- Company with reliable moderate to fast Internet connection

TradeWeb™ Enterprise at a glance:

- Multi-PC support
- Platform-independent
- Application server independent
- Database independent
- Graphically rich and intuitive web-based user interface
- Centralized database for housekeeping
- Multi-format consolidated report generation (including Microsoft Excel or Adobe PDF)
- Powerful, comprehensive, incisive

System Requirements (server):

- An enterprise class server hardware
- Minimum Intel 4, 2GHz Dual Core CPU or equivalent
- Minimum 4 GB of RAM
- Minimum 50 GB of hard disk space available before installation
- A stable broadband Internet connection
- Connects to the corporate Local Area Network (LAN)

System Requirements (declarants):

- Minimum Microsoft Internet Explorer 8, versions above IE8 to use the Compatibility View settings
- Other supported browsers : Firefox, Safari, Chromium/ Google Chrome and Opera
- Browser must enable JavaScript, window pop-up, and file download
- Minimum Intel 4, 2GHz CPU or equivalent (Dual Core recommended)
- Minimum 512 MB of RAM (2 GB recommended)
- Minimum 100 MB of hard disk space available on the window partition
- Connects to the corporate Local Area Network (LAN)

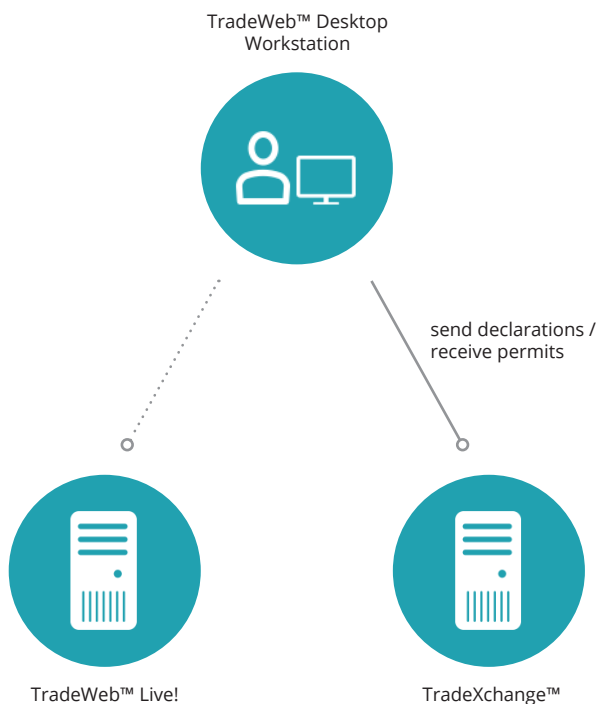
TRADEWEB™ DESKTOP

The standalone desktop solution

TradeWeb™ Desktop is the latest addition to the desktop trade declarations products. As a PC-based application, TradeWeb™ Desktop does not rely on the internet to the same degree as our other TradeWeb™ solutions. Easily installed from a CD on to your office or home PC it is accessible at all times.

Developed as a pure Java application, making use of the latest technologies, TradeWeb™ Desktop enables you to create declarations or generate Cargo Clearance Permits offline. Submissions are made through dialup, ADSL or LAN to TradeNet®.

Utilizing a graphically rich interface with intuitive navigation TradeWeb™ Desktop is fast and easy to use, requiring minimum learning. While an improved database, flexible search capabilities and multi-format reporting make it a reliable and powerful performer too.



Suitable for:

- Any company size, large or small
- Company with slow or unstable Internet connection
- Company with designated PC for its declarant
- Company that would like to keep its permit data within its premise
- Company that would like to restrict who has access to its permit data
- Declarants who like to create declarations offline, then send them in bulk to TradeNet® when online

TradeWeb™ Desktop at a glance:

- Easy to install and runs on any modern PC
- Minimum learning required
- Flexible searches
- Good performance, does not deteriorate with heavy usage
- Auto-update itself via the Web
- Multi-format report generation (including Microsoft Excel and Adobe PDF)
- Robust, simple, productive

System Requirements:

- A PC running Microsoft Windows 7 (application to be run in Compatibility Settings)
- Minimum Intel 4, 2 GHz CPU or equivalent (Dual Core recommended)
- Minimum 512 MB of RAM (2 GB recommended)
- Minimum 500 MB of hard disk space available on the Windows partition
- A modem or broadband (ADSL) Internet connection

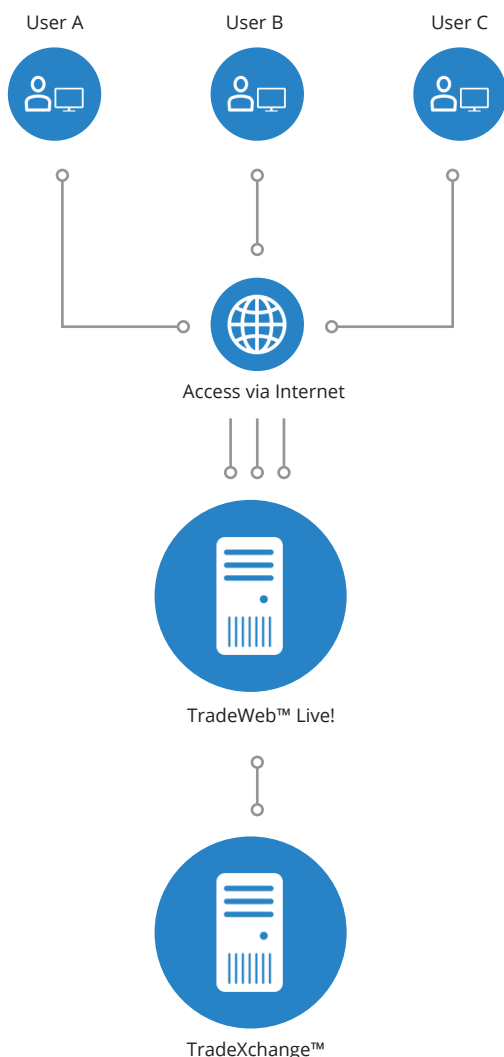
TRADEWEB™ LIVE!

The online web-based solution

At CrimsonLogic we launched our first web-based trade declaration product almost a decade ago. Called TradeWeb™ Live!, today's version benefits from years of development in line with the maturity of the internet itself.

Accessed via any Web browser with a good Internet connection, TradeWeb™ Live! utilises the latest Web 2.0 technology to enable an intuitive user interface that provides fast and easy navigation, comprehensive search features and the ability to generate reports in a variety of formats.

In the office or on the move, TradeWeb™ Live! connects to TradeXchange® TradeNet® using a secure server-to-server connection. As a web-based application it can be accessed by users anywhere at any time.



Suitable for:

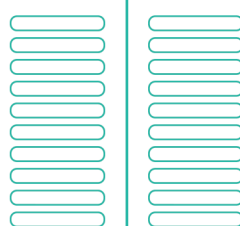
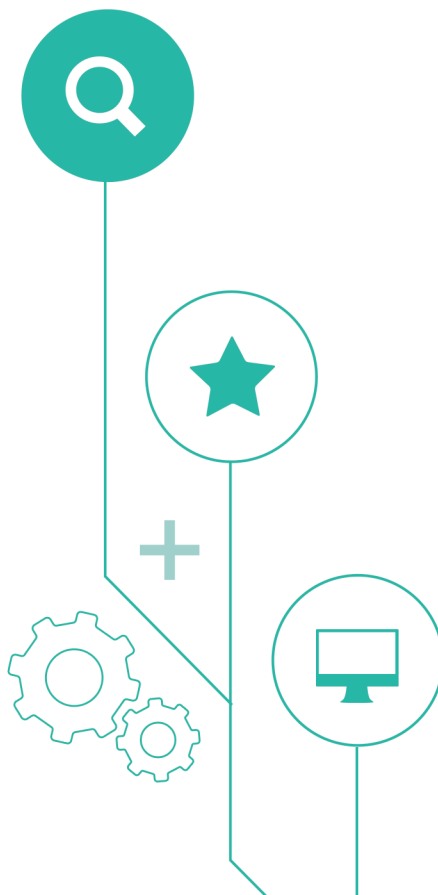
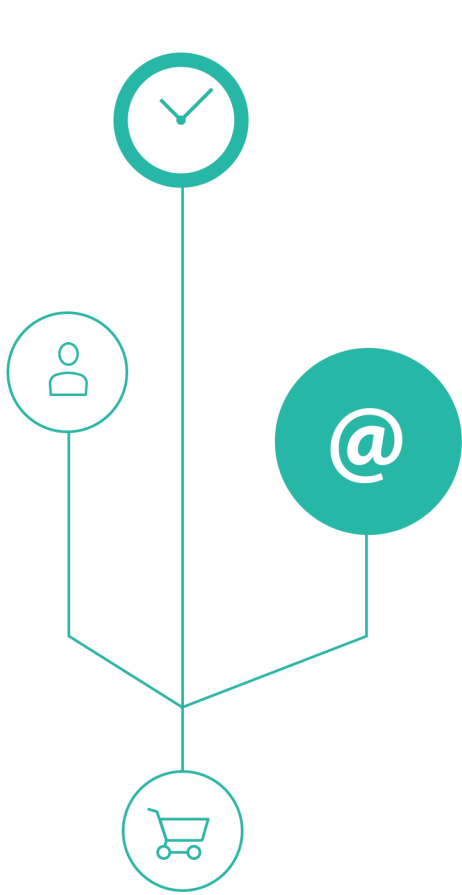
- Any company size, large or small
- Company with reliable moderate to fast Internet connection
- Company that does not mind its permit data stored at CrimsonLogic Data Centre or on the Cloud
- Company that deploy laptop to its declarant
- Declarants who are on the move
- Declarants who are comfortable with using a web application to create declarations

TradeWeb™ Live! at a glance:

- Web-based application
- Desktop and laptop usage
- Minimum learning required
- Good performance, does not deteriorate with heavy usage
- Multi-format report generation (including Microsoft Excel or Adobe PDF)
- Maintenance-free
- Mobile, fast, immediate

System Requirements:

- Minimum Microsoft Internet Explorer 8; versions above IE8 to use the Compatibility View settings
- Other supported browsers : Firefox, Safari, Chromium/ Google Chrome and Opera
- Browser must enable JavaScript, window pop-up, and file download
- Minimum Intel 4, 2GHz CPU or equivalent (Dual Core recommended)
- Minimum 512 MB of RAM (2 GB recommended)
- Minimum 100 MB of hard disk space available on the window partition
- A broadband (ADSL) Internet connection



www.etrade.crimsonlogic.com

