



The Alert Bay Ecological Park, known as “*Gator Gardens*” until renamed in 1998, provides a paradise for bird-watchers and botanists. The marsh is fed by an underground fresh water spring and has three short trails around the forested area. The Park is a great starting point to explore the 16 kilometers of trails throughout the Island.

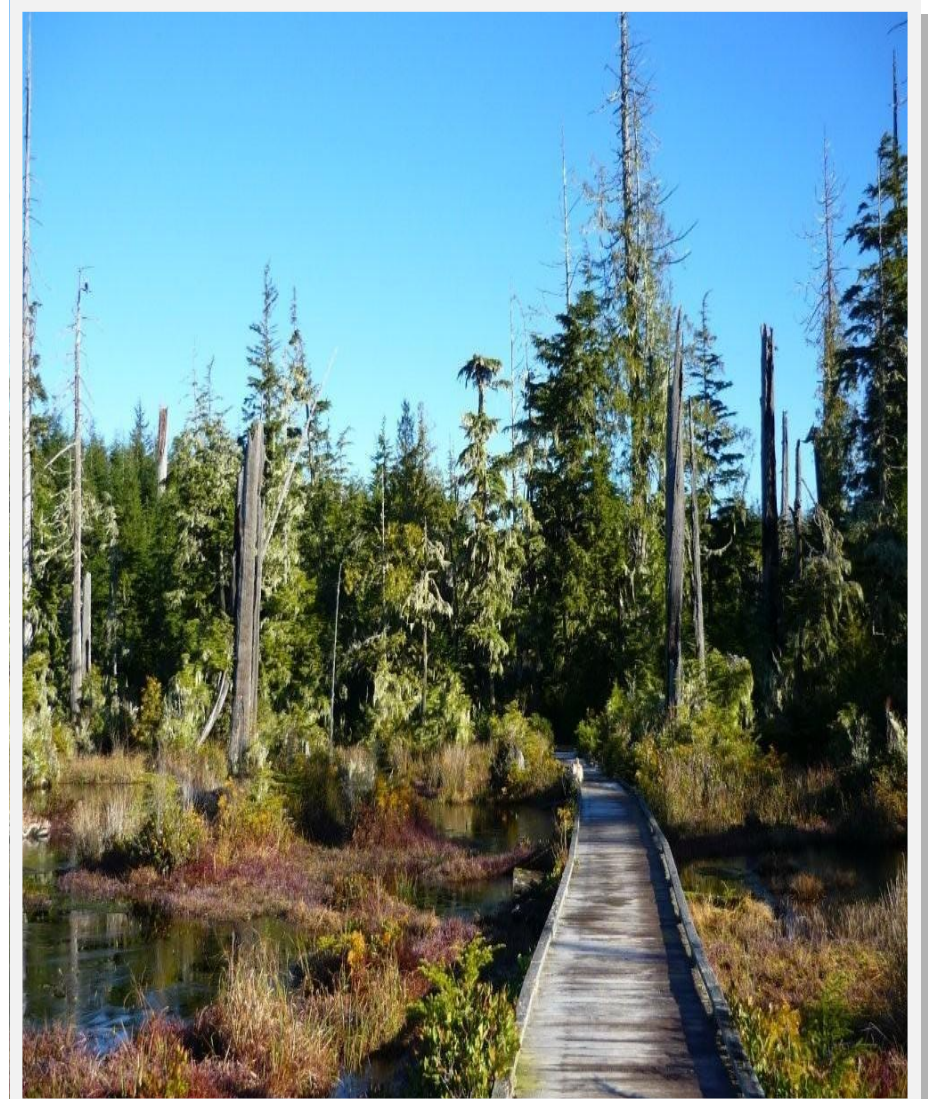
The Boardwalk across the marsh allows visitors a close-up look at the swamps ecosystem. Cedar snags, hemlocks and pine trees draped with “witches hair” moss gives the park its eerie charm and beauty.

The piercing cry of the stately bald eagle, a frequent visitor to the Park, and the clattering and clucking of ravens and crows are examples of sounds visitor will experience.

The Ecological Park originated with Spencer and Huson’s decision to change from a Fish Saltery in 1870 to a Fish Cannery in 1881, the building was next to BC Ferry terminal. They built a dam part way up the hill to store fresh water for the cannery building. It took five years for the top of the hill to flood killing the trees. The Cannery building was purchased by BC Packers, a commercial fishing company in 1902, they continued to can fish until approximately 1941. The building then became a net loft for those who fished for BC Packers.

Although the building was taken down January 2003 by BC Packers, the dam remains part way up the hill and the water continues to bubble up from under the ground faster than it runs down the hill.

The Alert Bay Campground is adjacent to the park and offers full facilities at reasonable rates.



## Alert Bay Visitor Centre

118 Fir Street  
Alert Bay, BC, V0N1A0  
Phone: 250-974-5024  
info@alertbay.ca  
[www.alertbay.ca](http://www.alertbay.ca)

# Alert Bay Ecological Park



Skunk Cabbage/  
Lysichiton  
Camtschatcense



Red Alder/*Alnus  
Rubra*



Salal/*Gaultheria  
Shallon*



Bunchberry/  
*Cornus Canadensis*



Bracken Fern/  
*Pteridium Aquilinum*

Please refer to our  
**Cormorant Island Visitor  
Services & Attractions Map**  
for a detailed trail map.  
Available online or at the  
**Visitor Centre.**

