

Uncertainty and Business Cycles: Exogenous Impulse or Endogenous Response?[†]

By SYDNEY C. LUDVIGSON, SAI MA, AND SERENA NG*

Uncertainty about the future rises in recessions. But is uncertainty a source of business cycles or an endogenous response to them, and does the type of uncertainty matter? We propose a novel SVAR identification strategy to address these questions via inequality constraints on the structural shocks. We find that sharply higher macroeconomic uncertainty in recessions is often an endogenous response to output shocks, while uncertainty about financial markets is a likely source of output fluctuations. (JEL D81, E23, E32, E44, G14)

A large literature in macroeconomics investigates the relationship between uncertainty and business cycle fluctuations. Interest in this topic has been spurred by a growing body of evidence that uncertainty rises sharply in recessions. This evidence is robust to the use of specific proxy variables such as stock market volatility and forecast dispersion as in Bloom (2009), or a broad-based measure of macroeconomic uncertainty, as in Jurado, Ludvigson, and Ng (2015) (hereafter, JLN). But while this evidence substantiates a role for uncertainty in deep recessions, the question of whether uncertainty is an exogenous source of business cycle fluctuations or an endogenous response to economic fundamentals is not fully understood. Existing results are based on convenient but restrictive identifying assumptions and have no explicit role for financial markets, even though uncertainty measures are strongly correlated with financial market variables. This paper considers a novel

*Ludvigson: Department of Economics, New York University, and NBER (email: sydney.ludvigson@nyu.edu); Ma: Federal Reserve Board of Governors (email: sai.ma@frb.gov); Ng: Department of Economics, Columbia University, and NBER (email: serena.ng@columbia.edu). Giorgio Primiceri was coeditor for this article. Ludvigson acknowledges financial support from the C.V. Starr Center for Applied Economics at NYU. Ng acknowledges support from the National Science Foundation under grants SES-0962431 and SES-1558623. We thank seminar participants at the 2016 ME, EFFE, and EF&G group meetings at the NBER, the CEPR-DRG-SAFE Conference on Banking, Monetary Policy, and Macroeconomic Performance in Frankfurt May 2016, the New Developments in Business Cycle Analysis conference in Rome June 2016, the 2016 Econometric Society meetings, the Joint Central Bankers Conference November 2017, the T2M Macro conference in Paris March 2018, the FRBNY and BOG Developments in Empirical Macroeconomics Conference May 10-11, 2018, WEAI 2019, Collegio Carlo Alberto, the Federal Reserve Board, the Federal Reserve Bank of Philadelphia, HEC Montreal, Johns Hopkins Carey School, MIT Sloan, NYU, SSE Swedish House of Finance, the University of Zurich/Swiss Finance Institute, UC Davis, UNC Kenan-Flagler, Washington University in St. Louis, and Yale for helpful comments. We are grateful to Ian Dew-Becker, Laurent Ferrara, John Leahy, Kurt Lunsford, José Luis Montiel Olea, Mikkel Plagborg-Møller, Giorgio Primiceri, Jim Stock, and Stephen Terry for many valuable discussions. The views expressed are those of the authors and do not necessarily reflect those of the Federal Reserve Board or the Federal Reserve System.

[†]Go to <https://doi.org/10.1257/mac.20190171> to visit the article page for additional materials and author disclosure statement(s) or to comment in the online discussion forum.

identification strategy to disentangle the causes and consequences of real and financial uncertainty.

The question of causality and the identification of exogenous variation in uncertainty is a long-standing challenge of the uncertainty literature. The challenge arises in part because there is no single uncertainty model, hence no theoretical consensus on whether the uncertainty that accompanies deep recessions is primarily a cause or effect (or both) of declines in economic activity. In fact, theory is even ambiguous about the sign of the effect, as we discuss below.

A separate challenge of the uncertainty literature pertains to the origins of uncertainty. Classic theories assert that uncertainty originates from economic fundamentals such as productivity and that such real economic uncertainty, when interacted with market frictions, discourages real activity. But some researchers have argued that uncertainty dampens the economy through its influence on financial markets (e.g., Gilchrist, Sim, and Zakrajsek 2010) or through sources of uncertainty specific to financial markets (e.g., Bollerslev, Tauchen, and Zhou 2009). Moreover, as surveyed by Ng and Wright (2013), all the post-1982 recessions have origins in financial markets, and these recessions have markedly different features from recessions where financial markets play a passive role. From this perspective, if financial shocks are subject to time-varying volatility, financial market uncertainty—as distinct from real economic uncertainty—could be a key player in recessions, both as a cause and as a propagating mechanism. Yet so far the literature has not disentangled the contributions of real versus financial uncertainty to business cycle fluctuations.

Econometric analyses aimed at understanding the role of uncertainty for business cycle fluctuations face their own challenges. Attempts to identify the “effects” of uncertainty shocks in existing empirical work are primarily based on recursive schemes within the framework of vector autoregressions (VAR).¹ While a recursive structure is a convenient starting point, it is ultimately unsatisfactory as an identification strategy for a study on uncertainty and business cycles. Not only do the existing studies differ according to whether uncertainty is ordered ahead of or after real activity variables in the VAR, there is no compelling theoretical reason to restrict the timing of the relationship between uncertainty (a second-moment variable) and real activity (a first-moment variable). Uncertainty could covary contemporaneously with real activity both because it is an exogenous impulse driving business cycles and because it responds endogenously to first-moment shocks. Recursive structures explicitly rule this out, since they presume that some variables respond only with a lag to others. Other commonly used VAR identification strategies, such as sign restrictions, long-run restrictions, and instrumental variables estimation, are likewise problematic, as we discuss further below.

It is with these challenges in mind that we return to the questions posed above: is uncertainty primarily a source of business cycle fluctuations or a consequence of them? And what is the relation of real versus financial uncertainty to business cycle fluctuations? The objective of this paper is to establish a set of stylized facts that addresses these questions econometrically. To do so, we take a two-pronged approach. First, we

¹ See Bachmann, Elstner, and Sims (2013); Bloom (2009, 2014); Bekaert, Hoerova, and Duca (2013); Gilchrist, Sim, and Zakrajsek (2010); and JLN (2015).

explicitly distinguish *macro* uncertainty U_{Mt} , from *financial* uncertainty U_{Ft} , and force their effects to be orthogonal. These data are included together in a structural vector autoregression (SVAR) along with a measure of real activity Y_t to evaluate their possibly distinct roles in business cycle fluctuations. Second, we propose a novel identification strategy that allows for simultaneous feedback between uncertainty and real activity using what we shall refer to as *shock-based* restrictions. Whereas SVARs are typically identified using a priori restrictions on the structural parameters, we achieve identification by using inequality constraints on the structural shocks to reinforce and interpret what the data already suggest.

More precisely, we impose two sets of shock-based restrictions. The first is a set of “event constraints” that require the identified shocks to have defensible properties during special episodes of history for which a broad historical understanding of the events of the time would suggest a certain behavior of the structural shocks.² We augment this understanding by using the data itself, i.e., the set of solutions consistent only with the standard reduced-form covariance restrictions, to locate distinguishing characteristics of the two different types of uncertainty shocks. The second is a set of “external variable constraints” that requires the identified uncertainty shocks to exhibit a nonzero absolute correlation with certain variables external to the VAR that should be informative about uncertainty shocks. While our shock-based restrictions do not in general permit point identification, the moment inequalities generated by these constraints, along with the reduced-form covariance restrictions, yield identified sets that paint a fairly clear picture regarding the role of financial and macro uncertainty during recessions.

The empirical exercise additionally requires that appropriate measures of macro and financial uncertainty be available. Our measures of uncertainty quantify the magnitude of unpredictability about the future. As in JLN (2015), the macro uncertainty index U_{Mt} measures a common component in the time-varying volatilities of h -step-ahead forecast errors across a large number of macroeconomic series that include variables from three categories: real activity (the most numerous), price, and financial. The same approach is used here to construct a broad-based index of financial uncertainty U_{Ft} that is based solely on financial market data and has never been used in the literature. We also study the Baker, Bloom, and Davis (2016) economic policy uncertainty (EPU) index, an alternative to the JLN macro uncertainty measure that is arguably relevant for real activity-based macro uncertainty.

Our main results may be stated as follows. First, positive shocks to financial uncertainty are found to cause a sharp and persistent decline in real activity, lending support to the hypothesis that heightened uncertainty is an exogenous impulse that causes recessions. In contrast to preexisting empirical work that uses recursive identification schemes (e.g., Bloom 2009, JLN 2015), we trace the source of this result specifically to financial market uncertainty. However there is little evidence that negative shocks to real activity have adverse effects on financial uncertainty.

²After earlier versions of this paper were circulated, we became aware of work by Antolín-Díaz and Rubio-Ramírez (2018) who, like us, suggest using restrictions on the shocks during certain episodes of history to help identification. We discuss the differences between our approaches below.

Second, the results suggest that sharply higher macro and policy uncertainty in recessions is best characterized as an endogenous response to business cycle fluctuations. That is, negative shocks to economic activity are found to cause increases in both macro and policy uncertainty, but there is little evidence that positive shocks to macro or policy uncertainty play a large role in causing lower economic activity as hypothesized by many theoretical models. Indeed, in most estimations the opposite is true: positive shocks to macro and policy uncertainty are found to *increase* real activity initially, consistent with “growth options” theories discussed below.

Third, an inspection of our identified solution sets shows that the admissible SVARs reflect a nonzero contemporaneous correlation between U_{Ft} and Y_t , as well as between U_{Mt} and Y_t , something that is inconsistent with any recursive ordering. Tests of the validity of a recursive structure are easily rejected by the data.

Fourth, all three estimated shocks systematically exhibit strong non-Gaussian features such as skewness and excess kurtosis. This is of interest because structural economic modeling and most Bayesian estimation techniques typically assume Gaussianity.

Looking across configuration of variables and restrictions considered, the findings that most stand out are the strong repercussions for real activity of financial uncertainty shocks, and the endogenous response of macro uncertainty to other adverse shocks associated with recessions. In other words, uncertainty shocks are not all alike. Distinguishing between the two types of uncertainty thus appears necessary for understanding the roles that uncertainty plays in economic fluctuations.

The rest of this paper is organized as follows. Section II reviews related literature. Section III discusses the econometric framework and identifying assumptions, and then compares our approach to other methodologies. Section IV discusses the data and implementation. Section V presents the main results for systems that use macro uncertainty as measured by U_{Mt} . Section VI reports results using other types of uncertainty. A number of additional results and information are reported in the online Appendix. Shock-based restrictions are likely to have promise in other applications. A paper with greater detail on the methodology proposed here with additional applications can be found in Ludvigson, Ma, and Ng (2020).

I. Related Literature

A large literature addresses the question of uncertainty and its relation to economic activity.³ Besides the evidence cited above for the United States, Nakamura, Sergeyev, and Steinsson (2017) estimate growth rate and volatility shocks for 16 developed countries and find that they are substantially negatively correlated. Theories for which uncertainty plays a key role differ widely on the question of whether this correlation implies that uncertainty is primarily a cause or a consequence of declines in economic activity.

One strand of the literature proposes uncertainty as a cause of lower economic growth. This includes models of the real options effects of uncertainty (Bernanke

³This literature has become voluminous. See Bloom (2014) for a recent review of the literature.

1983, McDonald and Siegel 1986), models in which uncertainty influences financing constraints (Gilchrist, Sim, and Zakrajsek 2010; Arellano, Bai, and Kehoe 2011), or precautionary saving (Basu and Bundick 2017; Leduc and Liu 2016; Fernández-Villaverde et al. 2011). These theories almost always presume that uncertainty is an exogenous shock to the volatility of some economic fundamental. Some theories presume that higher uncertainty originates directly in the process governing technological innovation, which subsequently causes a decline in real activity (e.g., Bloom 2009, Bloom et al. 2018). According to these theories, positive macro uncertainty shocks should cause declines in real economic activity. But while this theoretical literature has focused on uncertainty originating in economic fundamentals, the empirical literature has typically evaluated those theories using uncertainty proxies that are strongly correlated with financial market variables. This practice raises the question of whether it is real economic uncertainty or financial market uncertainty (or both) that is the driver of recessions, a question of interest to our investigation.

A second strand of the literature postulates that higher macro uncertainty arises solely as a *response* to lower economic growth. In these theories there is no exogenous uncertainty shock at all and all uncertainty variation is endogenous. Some theories presume that bad times incentivize risky behavior (Bachmann and Moscarini 2011, Fostel and Geanakoplos 2012), reduce information and with it the forecastability of future outcomes (Van Nieuwerburgh and Veldkamp 2006; Fajgelbaum, Schaal, and Taschereau-Dumouchel 2017; Ilut and Saijo 2016), provoke new and unfamiliar economic policies with uncertain effects (Pástor and Veronesi 2013), create a greater misallocation of capital across sectors (Ai, Li, and Yang 2015), or generate endogenous countercyclical uncertainty in consumption growth because investment is costly to reverse (Gomes and Schmid 2017).

And yet a third literature has raised the possibility that some forms of uncertainty can actually *increase* economic activity. “Growth options” theories of uncertainty postulate that a mean-preserving spread in risk generated from an unbounded upside coupled with a limited downside can cause firms to invest and hire, since the increase in mean-preserving risk increases expected profits. Such theories were often used to explain the dot-com boom. Examples originate in early work by Oi (1961), Hartman (1972), and Abel (1983), and more recently Bar-Ilan and Strange (1996); Pástor and Veronesi (2006); Kraft, Schwartz, and Weiss (2018); Segal, Shaliastovich, and Yaron (2015).

As this brief literature review makes plain, there is no single uncertainty theory or all-encompassing structural model that we can use to link with data. Put simply, the body of theoretical work does not provide precise identifying restrictions for empirical work. Instead, what the literature presents is a wide range of theoretical predictions about the relationship between uncertainty and real economic activity that are also ambiguous about the sign of the relationship. The absence of a theoretical consensus on this relationship, along with the sheer number of theories and limited body of evidence on the structural elements of specific models, underscores the extent to which the question of cause and effect is fundamentally an empirical one.

Of course, all empirical studies of this nature require identifying assumptions. But commonly used SVAR identification schemes appear ill-equipped to address the empirical questions at hand. Recursive identification schemes are inappropriate

because, by construction, they rule out the possibility that uncertainty and real activity could influence one another within the period. Sign restrictions on impulse responses are inappropriate since theory is ambiguous about the sign of the relationship. Zero-frequency restrictions are difficult to motivate as the long-run effects of uncertainty shocks have not been theorized. Instrumental variable analysis is challenging since instruments that are credibly exogenous are difficult if not impossible to find for this application. All of these considerations motivate the novel identification strategy proposed in this paper.

II. Econometric Framework

We consider a system with $n = 3$ variables: $\mathbf{X}_t = (U_{Mt}, Y_t, U_{Ft})'$, where U_{Mt} denotes the JLN index of macro uncertainty, Y_t denotes a measure of real activity, and U_{Ft} denotes the index of financial uncertainty. We suppose that \mathbf{X}_t has a reduced-form finite-order autoregressive representation $\mathbf{X}_t = \sum_{j=1}^p \mathbf{A}_j \mathbf{X}_{t-j} + \boldsymbol{\eta}_t$, $\boldsymbol{\eta}_t \sim (0, \boldsymbol{\Omega})$, $\boldsymbol{\Omega} = \mathbf{P}\mathbf{P}'$, where \mathbf{P} is the unique lower-triangular Cholesky factor with nonnegative diagonal elements. The reduced-form parameters are collected into $\phi = (\text{vec}(\mathbf{A}_1)' \dots \text{vec}(\mathbf{A}_p)', \text{vech}(\boldsymbol{\Omega})')'$. The reduced-form innovations $\boldsymbol{\eta}_t = (\eta_{Mt}, \eta_{Yt}, \eta_{Ft})'$ are related to the structural shocks $\mathbf{e}_t = (e_{Mt}, e_{Yt}, e_{Ft})'$ by an invertible matrix \mathbf{H} :

$$\boldsymbol{\eta}_t = \mathbf{H}\boldsymbol{\Sigma}\mathbf{e}_t \equiv \mathbf{B}\mathbf{e}_t, \quad \mathbf{e}_t \sim (0, \mathbf{I}_K), \quad \text{diag}(\mathbf{H}) = 1,$$

where $\mathbf{B} \equiv \mathbf{H}\boldsymbol{\Sigma}$, and $\boldsymbol{\Sigma}$ is a diagonal matrix with variance of the shocks in the diagonal entries. The structural shocks \mathbf{e}_t are mean zero with unit variance, serially and mutually uncorrelated. We adopt the unit effect normalization that $H_{jj} = 1$ for all j .

The goal of the exercise is analyze the dynamic effects of \mathbf{e}_t on \mathbf{X}_t . Let “hats” denote estimated variables. Since the autoregressive parameters \mathbf{A}_j can be consistently estimated under regularity conditions, the sample residuals $\hat{\boldsymbol{\eta}}(\hat{\phi})$ are consistent estimates of $\boldsymbol{\eta}_t$. The empirical SVAR problem reduces to finding \mathbf{B} from $\hat{\phi}$. But there are 9 parameters in \mathbf{B} and the reduced-form covariance structure of $\hat{\boldsymbol{\eta}}_t$ only provides $n(n+1)/2 = 6$ restrictions $\bar{g}_Z(\mathbf{B})$ in the form

$$\bar{g}_Z(\mathbf{B}) \equiv \text{vech}(\hat{\boldsymbol{\Omega}}) - \text{vech}(\mathbf{B}\mathbf{B}') = \mathbf{0}.$$

The model is underidentified as there can be infinitely many solutions satisfying the covariance restrictions $\bar{g}_Z(\mathbf{B}) = \mathbf{0}$. Let these uncountably many solutions be collected into the set $\hat{\mathcal{B}} = \{\mathbf{B} = \hat{\mathbf{P}}\mathbf{Q} : \mathbf{Q} \in \mathcal{O}_n, \text{diag}(\mathbf{B}) \geq 0, \bar{g}_Z(\mathbf{B}) = \mathbf{0}\}$, where \mathcal{O}_n is the set of $n \times n$ orthonormal matrices. We shall refer to $\hat{\mathcal{B}}$ as the *unconstrained set* for short, with the understanding that it is not completely unconstrained given the imposition of the reduced-form covariance restrictions. To simplify notation, the dependence of $\hat{\mathcal{B}}$ on \mathbf{Q} and $\hat{\phi}$ is suppressed.

Point identification requires restrictions beyond the ones implied by the covariance structure to reduce $\hat{\mathcal{B}}$ to a singleton. As discussed above, the theories reviewed in the previous section do not lend support to identification schemes commonly used in the literature. One possibility is to turn to external variables. An example relevant

to our work is Stock and Watson (2012), in which either stock market volatility or the EPU index of Baker, Bloom, and Davis (2016) are used as external instrumental variables to identify the effects of uncertainty shocks. Our analysis differs not only because we have two types of uncertainty and are interested in the dynamic effects of all shocks in the model. The main difference is that our procedure explicitly recognizes that macro uncertainty, policy uncertainty, and financial uncertainty are all endogenous variables. As such, valid instruments, which must be exogenous, are hard to find.

We address these challenges by putting restrictions on the behavior of the structural shocks. Although the unconstrained set can be uncountably large, our proposed identifying restrictions explicitly recognize that not every solution in \hat{B} is equally credible. We refer to these as *shock-based restrictions* since we use features of the shocks to decide if a solution in the unconstrained set should be kept. Even though the stated goal of any SVAR exercise is to identify e_t , it is somewhat surprising that little attention is paid to the shocks themselves. Before turning to the restrictions, we first discuss some facts that motivate them.

A. Motivating Facts

Since we are interested in understanding the possible role of different types of uncertainty in economic fluctuations, it is useful to isolate episodes of heightened financial and macro uncertainty, what we shall call “big shock” uncertainty events. Consider first financial uncertainty. In the sample we study, the two largest financial uncertainty episodes are the 1987 stock market crash, and the Great Financial Crisis/Great Recession of 2008–2009.

On Monday October 19, 1987, the Dow Jones Industrial Average dropped 22.6 percent, the largest one-day stock market decline in history. Popular explanations include the rapidly rising globalization of financial markets and financial innovations associated with index futures and portfolio insurance. A belief that such financial innovations played a predominant role in the crash was sufficiently widespread that new regulations for exchange trading, such as “circuit breakers,” and an overhaul of trade clearing protocols were developed in the aftermath.⁴

In October of 2008, the Dow Jones Industrial average began a pronounced decline and subsequently fell more than 50 percent over a period of 17 months. The collapse in the market over this period has been associated with a broad-based Great Financial Crisis (GFC) that is often cited as a “trigger” of the Great Recession (GR).⁵ Many possible contributors to the crisis have been noted, including problems with subprime lending and a preceding housing boom. But at least some of the variation in financial uncertainty appears to have its origins in securities markets. Financial intermediaries played a large role in the crisis, primarily because they hold vast portfolios of financial securities. Speculative trading activities by large financial institutions such as AIG, Lehman Brothers, and Bear Stearns, possibly spurred by a mistaken pricing of risk, have been placed at the center of the crisis

⁴ See, for example, https://www.federalreservehistory.org/essays/stock_market_crash_of_1987.

⁵ See https://en.wikipedia.org/wiki/Financial_crisis_of_2007-2008.

by some analyses (e.g., Glaeser, Santos, and Weyl 2017). Several highly leveraged financial institutions (BNP Paribas, Northern Rock) experienced a total collapse in liquidity that began August of 2007, preceding the recession. And uncertainty about the value of new products of financial innovation have been cited as pertinent to the financial crisis, including the securitization of mortgages and other debt obligations, and the rapid growth in credit default swaps.⁶ In short, a defining feature of both the 1987 crash and the GFC is that factors originating specifically in financial markets appeared to play an important role in heightened financial uncertainty.

With this in mind, we ask what can be said about the uncertainty shocks themselves *before* imposing any identifying restrictions. To address this question, we construct the unconstrained set $\hat{\mathcal{B}}$, which is based on the reduced-form covariance restrictions alone, and then study when big shocks in this set have occurred over the course of fifty years in our sample by searching across the unconstrained set $\hat{\mathcal{B}}$ for the month in which the uncertainty shocks $e_{Ft}(\mathbf{B})$ and $e_{Mt}(\mathbf{B})$ are largest.

To construct the unconstrained solution set $\hat{\mathcal{B}}$, we initialize \mathbf{B} to be the unique lower-triangular Cholesky factor of $\hat{\Omega}$ with nonnegative diagonal elements, $\hat{\mathbf{P}}$, and then rotate it by $K = 1.5$ million random orthogonal matrices \mathbf{Q} . Each rotation begins by drawing an $n \times n$ matrix \mathbf{M} of NID(0, 1) random variables. Then \mathbf{Q} is taken to be the orthonormal matrix in the \mathbf{QR} decomposition of \mathbf{M} . Since $\mathbf{B} = \hat{\mathbf{P}}\mathbf{Q}$, the procedure imposes the covariance restrictions $\text{vech}(\Omega) = \text{vech}(\mathbf{B}\mathbf{B}')$ by construction. Let $\mathbf{e}_t(\mathbf{B}) = \mathbf{B}^{-1}\hat{\boldsymbol{\eta}}_t$ be the shocks implied by a $\mathbf{B} \in \hat{\mathcal{B}}$ for given $\hat{\boldsymbol{\eta}}_t$. The moments implied by the covariance structure alone give us 1.5 million values of \mathbf{B} , and thus 1.5 million unconstrained values of $\mathbf{e}_t(\mathbf{B})$ for $t = 1, \dots, T$.

Searching over the 1.5 million rotations, we find that the date in our sample with the most maxima in $e_{Ft}(\mathbf{B})$ (31 percent of them) is 2008:09, which happens to be the month when Lehman filed for bankruptcy and when the stock market fell nearly 800 points. The date with the second most maxima in $e_{Ft}(\mathbf{B})$ (25 percent of them) is 1987:10, the month of the stock market crash. Looking at the 1.5 million values of $e_{Ft}(\mathbf{B})$ obtained for 2008:09, we find that its distribution is right skewed with few negative values: 30 percent of the $e_{Ft}(\mathbf{B})$ in 2008:09 have a value of 4 (standard deviations) or larger, 20 percent have a value of 5 or larger, while 5 percent of them take on a value of 6 or larger. For the 1.5 million values of $e_{Ft}(\mathbf{B})$ obtained in 1987:10, we find similarly that 25 percent of the $e_{Ft}(\mathbf{B})$ in 1987:10 have a value of four (standard deviations) or larger, while 5 percent of them take on a value of 5 or larger. Thus, the covariance structure of the data alone provides overwhelming evidence of a large positive financial uncertainty shock in the months of the 1987 crash and the 2008 Lehman collapse.

We repeat this exercise for the macro uncertainty shocks. The date with the most maxima in $e_{Mt}(\mathbf{B})$ across all 1.5 million rotations in $\hat{\mathcal{B}}$ (32 percent of them) is again 2008:09, the month of the Lehman collapse, while the date with the second most maxima is 1970:12. Looking at the 1.5 million values of $e_{Mt}(\mathbf{B})$ obtained for 2008:09, we find a distribution that is very close to that of $e_{Ft}(\mathbf{B})$: 33 percent have a value of 4 or larger, 20 percent have a value of 5 or larger, and 5 percent have a value

⁶“FT Martin Wolf—Reform of Regulation and Incentives.” *Financial Times*. June 23, 2009.

of 6 or larger. For the 1970:12 date, we find that 25 percent of the 1.5 million values of $e_{M_t}(\mathbf{B})$ have a value of 4 or larger, while 10 percent of them take on a value of 5 or larger. Thus, the covariance structure of the data alone provides overwhelming evidence of a large positive macro uncertainty shock in the month of the 2008 Lehman collapse and in December of 1970.

What might be the significance of the last month in 1970 for macro uncertainty? Unlike 2008:09, this date is not associated with a single salient event such as the Lehman collapse. But further inspection shows that the big macro uncertainty shocks found in 1970:12 have their origins in uncertainty about real economic activity.⁷ The late 1960s and early 1970s were a time of rising anxieties on a number of fronts given the twin wars in Vietnam and Cambodia and accelerating inflation. But, arguably, the single most relevant source of real economic uncertainty at the end of 1970 involved the likelihood and consequences of a collapse of the Bretton Woods system. By December of 1970, it was evident that the large US balance of payments deficit of the time was incompatible with the gold standard, an acknowledgement that prompted periodic runs on the dollar and growing unease over the possible policy response. By the time of the so-called Nixon “shock” in August of 1971, a little over six months after our identified big real uncertainty shock, it was widely recognized that the \$35-per-ounce of gold conversation rate was unsustainable and that the collapse of Bretton Woods was inevitable. Thus, a historical reading of the times would place the period of genuine uncertainty surrounding the collapse of Bretton Woods sometime earlier than August 1971, when there was still room for reasoned speculation. From an inspection of the unconstrained set, it is apparent that the date with the biggest shock in the 12-month run-up to the abandonment of the gold standard is 1970:12.

Evidently, this date represents a big shock episode for the real activity component of U_{M_t} , one that appears to be relatively unimportant for financial uncertainty. Conversely, the month of the 1987 stock market crash represents a big shock episode for U_{F_t} , one that is relatively unimportant for macro/real uncertainty. We use these facts below to help discern the possibly distinct roles of macro and financial uncertainty for real activity.

We argue that other major economic events in our sample, even if they are not big shock events in $\hat{\mathbf{B}}$, still justify weaker restrictions on the signs of the uncertainty shocks during specific months. On October 6, 1979, Paul Volcker announced the results of an unscheduled FOMC meeting in which it was decided that a new nonborrowed reserves instrument approach to the implementation of monetary policy would supersede the federal funds rate instrument approach used for years prior, in an effort to bring down accelerating inflation. (We refer to this as the “Volcker experiment” below.) In July/August of 2011, the US House of Representatives broke with long-standing precedent to demand that the US president negotiate over deficit reduction in exchange for an increase in the debt ceiling. We argue that a credible identification scheme would not identify October 1979 or the months

⁷When we replace U_{M_t} with a subindex based only on the real activity variables in the macro index, we find that 1970:12 is the date with the *greatest* number of maxima in the shocks to real activity uncertainty. We investigate this subindex further below.

associated with the 2011 debt ceiling crisis as periods of below average uncertainty shocks. Similarly, a credible identification scheme would not identify the GR—the most protracted economic downturn of the post-war period—as an episode in which real activity shocks were above average. We refer to these event constraints as “nonnegative event” restrictions.

Our restrictions also employ variables external to the SVAR to help identify uncertainty shocks. What type of external variables are likely to encode information about uncertainty shocks? We argue that both the stock market and price of safe-haven assets such as gold are two such variables. Empirically, it has long been understood that periods of high stock market volatility coincide with movements downward in the aggregate stock market.⁸ The correlation between the CBOE Volatility Index (VIX) and the log excess stock market return on the CRSP value-weighted stock market index is -0.40 from January 1990 (when the standard VIX series begins) to the end of our sample.⁹ This correlation is also relevant for U_{Ft} , since its behavior is dominated by the volatility of equity returns.¹⁰ Such a negative correlation between uncertainty shocks and the ex post stock return is implied by a large body of extant macro and finance theories. For example, the Capital Asset Pricing Model (CAPM) of Sharpe (1964) and Lintner (1965) implies a perfect negative correlation since the stock market risk premium (which moves inversely to the ex post return) is perfectly correlated with shocks to financial uncertainty. More recent asset pricing theories that emphasize the importance of uncertainty shocks, such as those in Bollerslev, Tauchen, and Zhou (2009) and Campbell et al. (2018), argue that the volatility of volatility in financial markets creates an additional source of negative correlation between uncertainty shocks and ex post stock market returns. Likewise, the value of gold is likely to contain information about uncertainty shocks, including macroeconomic uncertainty with origins outside of equity markets. Examples of these forms of uncertainty are natural disasters, terrorist attacks, political coups, and revolutions, as considered in Baker and Bloom (2013), but also unpredictable inflation, interest rates, or energy prices. Our premise is that plausibly exogenous increases in uncertainty of this nature have typically been associated with increases in returns on quintessential safe-haven assets, the archetypal example being gold.¹¹

⁸ See, for example, French, Schwert, and Stambaugh (1987); Schwert (1989); Nelson (1991); Campbell and Hentschel (1992); Engle and Ng (1993); and Whaley (2000).

⁹ The VIX data were downloaded from CBOE. The 1990–2003 data are from <http://www.cboe.com/publish/scheduledtask/mktdata/datahouse/vixarchive.xls>. The post-2004 data are from <http://www.cboe.com/publish/scheduledtask/mktdata/datahouse/vixcurrent.csv>. We convert the daily observations to monthly frequency using the end-of-month “VIX Close.” The data were downloaded in August 2018.

¹⁰ The correlation between the VIX and U_{Ft} is 0.85 in the sample that starts in 1990. The correlation between the VXO volatility index (which goes back to the beginning of our sample) and U_{Ft} is 0.75.

¹¹ Piffer and Podstawski (2017) suggest using variation in the real price of gold around specific events as an instrumental variable to identify uncertainty shocks. We instead use it as an informative external variable for macro uncertainty shocks, without requiring it to be a valid instrument.

B. Shock-Based Constraints

Motivated by the historical facts just discussed, we now consider two types of shock-based restrictions to help with identification: event constraints and external variables constraints.

Event Constraints.—Event constraints are unusual episodes of history in which a broad-based (historical and statistical) reading of the times would suggest a specific feature of the structural shocks. The idea is that a credible identification scheme should produce shocks that are not grossly at variance with our ex post understanding of events, at least during periods of special interest. Specifically, we require that any $\mathbf{e}_t(\mathbf{B})$ formed from $\mathbf{B} \in \tilde{\mathcal{B}}$ satisfy the following event constraints:

- (i) $\bar{g}_{E1}: e_{F\bar{\tau}_1} \geq \bar{k}_1$ at $\bar{\tau}_1 = 1987:10$.
- (ii) $\bar{g}_{E2}: (e_{F\bar{\tau}_2} \geq \bar{k}_2) \vee (e_{M\bar{\tau}_2} \geq \bar{k}_3)$ at $\bar{\tau}_2 = 2008:09$.
- (iii) $\bar{g}_{E3}: e_{M\bar{\tau}_3} \geq \bar{k}_4$ at $\bar{\tau}_3 = 1970:12$.
- (iv) $\bar{g}_{E4}: 0 \geq \sum_{t=\bar{\tau}_3} e_{Yt}$ for $\bar{\tau}_4 \in [2007:12, 2009:06]$.
- (v) $\bar{g}_{E5}: e_{M\bar{\tau}_5} \geq 0$ and $e_{F\bar{\tau}_5} \geq 0$ at $\bar{\tau}_5 = 1979:10$.
- (vi) $\bar{g}_{E6}: e_{M\bar{\tau}_6} \geq 0$ and $e_{F\bar{\tau}_6} \geq 0$ at $\bar{\tau}_6 \in [2011:07, 2011:08]$.

The first three constraints pertain to the big shock events discussed above. Condition (i) requires that the financial uncertainty shock found in period $\bar{\tau}_1$ of October 1987 (Black Monday) be large and exceed \bar{k}_1 standard deviations above the mean. Condition (ii) requires that *either* the financial uncertainty shock *or* the macro uncertainty shock (or both) found in period $\bar{\tau}_2$ of September 2008 (the month of the Lehman collapse) be large and exceed \bar{k}_2 and \bar{k}_3 standard deviations above the mean, respectively. Condition (iii) requires that the macro uncertainty shock found in period $\bar{\tau}_3$ of December 1970 be large and exceed \bar{k}_4 standard deviations above the mean. The last three constraints pertain to the nonnegative events discussed above. Condition (iv) requires that the cumulation of real activity shocks in $\bar{\tau}_4 \in [2007:12, 2009:06]$, corresponding to the GR, be nonnegative, which is to say that their sum may not be above average.¹² Conditions (v) and (vi) are restrictions on both types of uncertainty shocks that require they be nonnegative during the month $\bar{\tau}_5$ of October 1979 (Volcker experiment), and during the two months $\bar{\tau}_6 \in [2011:07, 2011:08]$, corresponding to the 2011 debt-ceiling crisis. This latter episode spills over into two months because the House of Representatives of the US Congress did not agree to raise the debt ceiling until July 31 of 2011, two days prior

¹²The dates 2007:12–2009:06 are NBER recession dates, which are taken to be coincident with the Great Financial Crisis.

to when the Treasury estimated the borrowing authority of the United States would be exhausted.

The six event constraints $\bar{g}_{E1}, \dots, \bar{g}_{E6}$ can be represented by a system of inequality constraints on \mathbf{B} :

$$\bar{g}_E(\mathbf{e}_t(\mathbf{B}); \bar{\tau}, \bar{\mathbf{k}}) \geq 0,$$

where $\bar{\mathbf{k}} = (\bar{k}_1, \bar{k}_2, \bar{k}_3, \bar{k}_4)' > 0$ are parameters and $\bar{\tau} = (\bar{\tau}_1, \bar{\tau}_2, \bar{\tau}_3, \bar{\tau}_4, \bar{\tau}_5)'$ are event dates. The choice of the $\bar{\mathbf{k}}$ parameters will be discussed below.

It is important to be clear about what the big shock constraints \bar{g}_{E1} , \bar{g}_{E2} , and \bar{g}_{E3} do and do not assume. The restriction \bar{g}_{E1} stipulates that *at least some* of the forecast error variance in \mathbf{X}_t in 1987:10 must be attributable to a large e_{Ft} , while \bar{g}_{E3} stipulates that *at least some* of the forecast error variance in 1970:12 must be attributable to a large e_{Mt} . Restriction \bar{g}_{E2} likewise assumes that at least one of e_{Mt} or e_{Ft} needs to have been large in the month of the Lehman collapse. What the restrictions do *not* require is that all or even most of the variation in these episodes be attributable to the specific shocks named in the restriction. In particular, they do not rule out large adverse roles for the other shocks, which are left unrestricted by the constraint. As we shall see below, the GFC/GR was characterized by large adverse shocks in all three variables, even though the second constraint only requires a large role for at least one uncertainty shock in a single month of this episode.

Event constraints put restrictions on the sign and the magnitude of $\mathbf{e}_t(\mathbf{B})$ rather than on the signs of impulse responses (IRFs), as is common in some SVAR approaches. Restrictions on the shocks turn out to be valuable for identification because, although two feasible structural models \mathbf{B} and $\tilde{\mathbf{B}}$ will generate shocks $\{\mathbf{e}_t(\mathbf{B})\}_{t=1}^T$ and $\{\tilde{\mathbf{e}}_t(\tilde{\mathbf{B}})\}_{t=1}^T$ with equivalent first and second moments, $\mathbf{e}_t(\mathbf{B})$ and $\tilde{\mathbf{e}}_t(\tilde{\mathbf{B}})$ are not necessarily the same at any given t . It is not hard to see that if $\mathbf{e}_t = \mathbf{Q}'\mathbf{P}^{-1}\hat{\eta}_t$ and $\tilde{\mathbf{e}}_t = \tilde{\mathbf{Q}}'\tilde{\mathbf{P}}^{-1}\hat{\eta}_t = \tilde{\mathbf{Q}}\mathbf{e}_t$, then $\tilde{\mathbf{e}}_t \neq \mathbf{e}_t$ at any given t when $\tilde{\mathbf{Q}} \neq \mathbf{Q}$.¹³ Put differently, two series with equivalent properties “on average” can still have distinguishable features in certain subperiods.

External Variable Constraints.—Variables external to the VAR can also facilitate identification when theory or economic reasoning imply they should be informative about the shocks of interest. We use correlations between the external variables and uncertainty shocks to generate additional inequality constraints.¹⁴ Let $\mathbf{S}_t = (S_{1t}, S_{2t})'$ denote a vector of external variables, where here S_{1t} denotes a measure of the aggregate stock market return and S_{2t} denotes the log difference in the

¹³Consider the $n = 2$ case: $\begin{pmatrix} \eta_{1t} \\ \eta_{2t} \end{pmatrix} = \begin{pmatrix} B_{11} & B_{12} \\ B_{21} & B_{22} \end{pmatrix} \begin{pmatrix} e_{1t} \\ e_{2t} \end{pmatrix}$. Solving for e_{1t} gives $e_{1t} = |\mathbf{B}|^{-1}(B_{22}\eta_{1t} - B_{12}\eta_{2t})$, where $|\mathbf{B}| = B_{11}B_{22} - B_{12}B_{21}$ is the determinant of \mathbf{B} . The values of η_{1t} and η_{2t} are given by the data. Hence, a restriction on the behavior of e_{1t} at specific time t_1 is a nonlinear restriction on \mathbf{B} , or equivalently, on \mathbf{Q} .

¹⁴Other researchers have used information in special variables to identify certain effects of uncertainty. Berger, Dew-Becker, and Giglio (2016), while not providing an explicit identification of uncertainty shocks, use options data and find that bad times are associated with higher realized volatility but not higher expected volatility, a result that they interpret as consistent with the hypothesis that higher uncertainty is a consequence rather than a cause of negative economic shocks.

real price of gold. The external variable constraints require that any $\mathbf{e}_t(\mathbf{B})$ formed from $\mathbf{B} \in \hat{\mathcal{B}}$ satisfy the following restrictions:

$$(i) \bar{g}_{C1}: 0 \geq \text{corr}(e_{jt}(\mathbf{B}), S_{1t}), j = M, F.$$

$$(ii) \bar{g}_{C2}: \text{corr}(e_{jt}(\mathbf{B}), S_{2t}) \geq 0, j = M, F.$$

The first constraint requires that uncertainty shocks be negatively correlated with stock market returns, and the second requires that they be positively correlated with the log change in the real price of gold. Taken together, the two constraints \bar{g}_{C1} and \bar{g}_{C2} can be formulated as a system of inequality constraints:

$$\bar{g}_c(\mathbf{e}(\mathbf{B}); \mathbf{S}) \geq 0.$$

The external variable constraints provide cross-equation restrictions on the parameters in \mathbf{B} . An important aspect of these constraints is that correlations are not invariant to orthonormal rotations. That is to say, correlations generated by \mathbf{B} will in general be different from those generated by $\tilde{\mathbf{B}} = \mathbf{B}\mathbf{Q}'$.

Two points are worthy of emphasis. First, although the external variables are used to help with identification, they are not required to be valid exogenous instruments, as in the proxy-VAR or external IV literature. We discuss this further below. Second, neither gold nor stock market returns are themselves real activity or uncertainty indicators and we are not interested in their behavior *per se*. This makes them well suited for using as external variables to help with identification.

C. Comparison with Other Methodologies

The idea of using specific events and/or external variables to identify shocks is not new. Many important studies have used a narrative approach to construct shock series from historical readings of political and economic events to be used as an external IV. The resulting oil price shocks based on timing of wars, tax shocks from fiscal policy announcements, and monetary policy shocks from a reading of FOMC meetings are typically used as though they were exogenous and accurately measured. But as noted in Ramey (2016), both assumptions are questionable. To deal with possible measurement errors, Mertens and Ravn (2014) uses the narrative tax changes as an external instrument. Similarly, Baker and Bloom (2013) use disaster-like events as instruments for stock market volatility with the aim of isolating exogenous variation in uncertainty. More generally, a prominent proxy-VAR/external IV literature, pioneered by Mertens and Ravn (2013) and Stock and Watson (2008), proposes using variables external to the VAR as instrumental variables to identify SVARs. In all of these papers, point identification is achieved by assuming that the instruments have a zero correlation with some shocks (an exogeneity assumption) and a nonzero correlation with others (a relevance assumption). Like this literature, a maintained assumption of our external variables constraints is that the random processes behind the external variables are determined outside of the VAR system. But unlike this literature, neither our external variables nor our event

episodes are presumed to be valid exogenous instruments that have zero correlations with certain shocks. Instead, we only require the weaker assumption that the events and external variables be driven at least in part by one or more of the shocks, thereby allowing us to narrow the set of solutions but not achieve point identification.

Our event constraints differ from the narrative approach in other ways. First, they are data driven rather than solely based on a narrative reading of history. We use features of the shocks during selected episodes to determine whether a possible solution is admissible. This is tantamount to creating dummy variables from the timing of specific events, and then putting restrictions on their correlation with the identified shocks. Second, the same SVAR is used to identify all shocks simultaneously; it is not a two-step procedure that identifies some shocks ahead of others.

It is worth contrasting the frequentist approach taken here with recent work on sign-restricted SVARs in Bayesian contexts. Rubio-Ramírez, Waggoner, and Zha (2010) point out that choosing \mathbf{Q} according to the \mathbf{QR} decomposition amounts to drawing \mathbf{Q} from a uniform distribution over the space of orthogonal matrices. Baumeister and Hamilton (2015) note that an uninformative prior over \mathbf{Q} can be informative for the posterior over the structural impact matrix and impulse responses in sign-restricted SVARs. We differ from these papers in two important ways. First, these papers focus specifically on restrictions placed on the sign of impulse response functions, whereas our restrictions are on timing, magnitude, and correlation, of the shocks. Second, our approach is frequentist in the spirit of the moment inequality framework of Andrews and Soares (2010), with moment conditions given by the inequalities from the event and external variable constraints, and equalities provided by the covariance structure. We use the \mathbf{QR} decomposition merely to generate candidate values of \mathbf{B} , and check if the resulting $\mathbf{e}_i(\mathbf{B})$ satisfies the constraints. Importantly, the shocks that result from our moment inequality restrictions exhibit significant departures from Gaussianity (see discussion below), an outcome that would greatly complicate any Bayesian estimation, but that is straightforward to handle using the frequentist approach of this paper.

After earlier versions of this paper were circulated, we became aware of work by Antolín-Díaz and Rubio-Ramírez (2018) who, like us, suggest using restrictions on the shocks during certain episodes of history to help identification. They propose several different types of restrictions, including sign restrictions on the shocks at certain dates, as in some of our event constraints above. But there are also several substantive differences. They entertain restrictions that play up the role of some shocks while simultaneously playing down the role of others. (See, for example, their “Type B” restrictions, in which for a particular period or periods the absolute value of one shock’s contribution to the unexpected change in a variable is assumed to be larger than the sum of the absolute value of the contributions of all other structural shocks.) This type of restriction differs from the event constraints proposed above because some shocks are presumed to play large roles while others must play smaller or negligible roles, more in the spirit of the traditional narrative-IV approach. By contrast, the event constraints above only require the weaker assumption that the events be driven at least in part by one or more of the shocks; they do not require the remaining shocks to play smaller roles. For example, our restrictions require that there be a large financial uncertainty shock or a large macro uncertainty shock

or both in 2008:09, but they do not rule out a large role for the real activity shock during this episode. Other differences are that Antolín-Díaz and Rubio-Ramírez (2018) do not use external variables at all, and their focus is on methodology in a Bayesian context at a general level. While our focus here is to use event and external variable constraints to help understand the role of macro or financial uncertainty in the aggregate economy, the use of shock-based restrictions is not limited to this particular application.

A number of studies have now followed our work to consider macro and financial uncertainty as possibly distinct drivers of fluctuations in real activity. We comment briefly on two here: Carriero, Clark, and Marcellino (2018) and Angelini et al. (2019). Before doing so, we emphasize that neither of these papers show the shocks implied by their identification schemes. A premise of this paper is that the shocks themselves are important objects of interest, and provide a crucial information for assessing the credibility of any given identification scheme. For example, a scheme that did not imply a fairly large financial uncertainty shock during the 1987 stock market crash is unlikely to be credible, given how isolated this episode was to the stock market.

Carriero, Clark, and Marcellino (2018) specify VARs with uncertainty variables and identify shocks by imposing a parametric specification for their time-varying heteroskedasticity. They include either the JLN macro uncertainty measure U_M or the VIX in a VAR along with several macro variables and conclude that the VIX can arise at least partly as an endogenous response to some macroeconomic events, while macro uncertainty “can be considered exogenous.” Numerous differences in modeling assumptions, identification restrictions, and data may contribute to our contrasting results, but in our experience at least two are likely to be important. First, we do not impose a potentially restrictive econometric model of the conditional moment behavior of the shocks. Instead, all such implications flow organically from our constraints, which are straightforward to interpret. For example, our identified shocks are both heteroskedastic and non-Gaussian, being more volatile in some episodes than others. But the precise form of heteroskedasticity and nonnormality we uncover is unlikely to be well captured by any parametric econometric specification of heteroskedasticity. Second, Carriero, Clark, and Marcellino (2018) place the different uncertainty variables in separate VARs one at a time rather than including them both in a single system, which forces their effects to be orthogonal. This is important given that the two types of uncertainty are strongly correlated. We find that if we do not explicitly control for U_F in the same empirical system that includes U_M , macro uncertainty tends to take on the causal role found here for financial uncertainty.

Angelini et al. (2019) use the very same system of variables used here but identify shocks based on zero restrictions in the \mathbf{B} matrix. These restrictions amount to timing restrictions on the dynamics of the variables, which are allowed to vary across subsamples. In particular, they assume that, in subsamples prior to 2008:01 (a break date that is exogenously chosen), U_{Ft} shocks could neither contemporaneously affect nor have been affected by real activity, i.e., the elements B_{FY} and B_{YF} of \mathbf{B} must be jointly zero. They justify these zero restrictions by arguing that financial regulation slowed down the response of financial markets to nonfinancial

shocks up to 2008:01. This is an interesting restriction, given that financial markets are typically presumed to respond quickly to news (even in samples prior to 2008), whereas macro variables are comparatively slower moving (e.g., Gertler and Karadi 2015; Lettau, Ludvigson, and Steindel 2002). When we apply our procedure on data up to 2008:01, there is no solution in the identified set that satisfies the joint restriction $B_{FY} = B_{YF} = 0$.

An additional point about the procedure is worth mentioning. Because the SVAR “shocks” are simply mutually uncorrelated forecast errors of the variables in our system, they do not necessarily correspond to primitive shocks of any particular model, as this is not our goal. Our real activity shocks are movements in a “first-moment” variable that could originate from technology, monetary policy, preferences, or government expenditure innovations. Financial uncertainty, a type of “second-moment” variable, could arise because of expected volatility in financial markets such as fear of a bank run or fear of bankruptcy. Another type of second-moment variable, macro uncertainty, could arise because of expected volatility in the macro economy, such as an expectation of greater difficulty in predicting future productivity, future monetary policy, or future fiscal policy. But the approach is silent on what drives variation in these forecast errors. In particular, our application is not designed to address the question of whether the dynamic relationships among the variables in \mathbf{X}_t that we estimate are ultimately driven by “shocks” to stock returns and/or gold, which we use as external variables. Addressing this question is challenging, since it would require estimating a larger system, which the reduced-form covariance restrictions would render even more underidentified than the current system. The objective of this study is the narrower question of whether it is shifts to first- or second-moment variables in our system (or both) that drive economic fluctuations. Disentangling the two types of uncertainty is a worthy exercise because the theoretical macro literature on uncertainty has focused on exogenous changes in real activity induced (macro) uncertainty, while the empirical literature has used proxies for macro uncertainty that are highly correlated with volatility in financial markets.

To have confidence in this implementation, we use a simulation to take into account sampling error and study the properties of the estimator. In the online Appendix, we describe a numerically intensive Monte Carlo simulation that bootstraps from the $\mathbf{e}_t(\mathbf{B})$ shocks for the \mathbf{X}_t system to create confidence bands for impulse responses.

To summarize, set identification is predicated on three core economic assumptions. First, the identified shocks must be consistent with a priori economic reasoning in a small number of events whose interpretation is relatively incontrovertible. Second, information about uncertainty shocks must be encoded in stock market returns and the real gold price, as specified by the external variable constraints. Third, a maintained assumption of the analysis is that the dynamic responses of interest can be captured without explicitly modeling the random processes behind the external variables.

III. Data and Implementation

We study VAR systems for three systems of data. Our main system is $\mathbf{X}_t = (U_{Mt}, ip_t, U_{Ft})'$, where U_{Mt} and U_{Ft} are statistical uncertainty indices

constructed using the methodology of JLN (2015). Financial uncertainty U_{Ft} is new to this paper. In all cases, we use the log of real industrial production, denoted ip_t , to measure Y_t .¹⁵ Industrial production is a widely watched economic indicator of business cycles. Subsequent sections consider additional systems that use either policy uncertainty indices in place of U_{Mt} , or a real activity subindex of U_{Mt} in place of U_{Mt} . For S_{1t} , we use the Center for Research in Securities Prices (CRSP) value-weighted stock market index return.¹⁶ For S_{2t} , we use the log difference in the gold price level, deflated using the Consumer Price Index (CPI) with January 2018 as the base month.¹⁷

Our statistical measures of uncertainty are constructed following the framework of JLN (2015), which aggregates over a large number of estimated uncertainties constructed from a panel of data. Let $y_{jt}^C \in Y_t^C = (y_{1t}^C, \dots, y_{N_{ct}}^C)'$ be a variable in category C . Its h -period-ahead uncertainty, denoted by $\mathcal{U}_{jt}^C(h)$, is defined to be the volatility of the purely unforecastable component of the future value of the series, conditional on all information available. Specifically,

$$(1) \quad \mathcal{U}_{jt}^C(h) \equiv \sqrt{\mathbb{E}\left[\left(y_{jt+h}^C - \mathbb{E}\left[y_{jt+h}^C | I_t\right]\right)^2 | I_t\right]},$$

where I_t denotes the information available. Uncertainty in category C is an aggregate of individual uncertainty series in the category

$$(2) \quad U_{Ct}(h) \equiv \text{plim}_{N_C \rightarrow \infty} \sum_{j=1}^{N_C} \frac{1}{N_C} \mathcal{U}_{jt}^C(h) \equiv \mathbb{E}_C[\mathcal{U}_{jt}^C(h)].$$

If the expectation today of the squared error in forecasting y_{jt+h} rises, uncertainty in the variable increases. As in JLN (2015), the conditional expectation of squared forecast errors in (1) is computed from a stochastic volatility model, while the conditional expectation $\mathbb{E}[y_{jt+h}^C | I_t]$ is replaced by a diffusion index forecast, augmented to allow for nonlinearities. These are predictions of an autoregression augmented with a small number of common factors estimated from a large number of economic time series x_{it} assumed to have factor structure. Nonlinearities are accommodated by including polynomial terms in the factors, and factors estimated from squares of the raw data. The use of large datasets reduces the possibility of biases that arise when relevant predictive information is ignored.

In this paper, we consider two categories of uncertainty: macro M and financial F . Hence, there are two datasets, both covering the sample 1960:07–2015:04. For macro uncertainty U_{Mt} , we use the FRED-MD monthly *macro dataset*, which we denote \mathcal{X}_t^M , consisting of 134 mostly macroeconomic time series.¹⁸ For financial

¹⁵The data (series name “INDPRO”) are from FRED-MD dataset (2015-05 Vintage), <https://s3.amazonaws.com/files.fred.stlouisfed.org/fred-md/monthly/2015-05.csv>.

¹⁶The CRSP index is a value-weighted return of all stocks in NYSE, AMEX, and NASDAQ. These data were retrieved from NYU CRSP data subscription file in February 2016.

¹⁷These data were downloaded from Macrotrends (<https://www.macrotrends.net/1333/historical-gold-prices-100-year-chart>). Macrotrends produces the series by combining information from the London Bullion Market Association (LBMA) measure of daily auction prices of gold, and the Bureau of Labor Statistics. The data were downloaded in January 2018.

¹⁸Available at <https://s3.amazonaws.com/files.fred.stlouisfed.org/fred-md/monthly/2015-05.csv>. This dataset is described in detail in McCracken and Ng (2016). We use May 2015 vintage.

uncertainty U_{Ft} , we use a *financial dataset* \mathcal{X}_t^f consisting of 148 measures of monthly financial indicators.¹⁹ We also use two measures of policy uncertainty taken from Baker, Bloom, and Davis (2016) in lieu of the statistical measure of macro uncertainty U_{Mt} .²⁰

The 134 macro series in \mathcal{X}^m are selected to represent broad categories of macroeconomic time series. The majority of these are real activity measures: real output and income, employment and hours, real retail, manufacturing and trade sales, consumer spending, housing starts, inventories and inventory sales ratios, orders and unfilled orders, compensation and labor costs, and capacity utilization measures. The dataset also includes commodity and price indexes, a handful of bond and stock market indexes, and foreign exchange measures. The financial dataset \mathcal{X}^f is an updated monthly version of the of 148 variables comprised solely of financial market time series used in Ludvigson and Ng (2007). These data include valuation ratios such as the dividend-price ratio and earnings-price ratio, growth rates of aggregate dividends and prices, default and term spreads, yields on corporate bonds of different ratings grades, yields on Treasuries and yield spreads, and a broad cross section of industry, size, book-market, and momentum portfolio equity returns.²¹ The indexes U_{Mt} and U_{Ft} lend themselves to different interpretations because they are constructed from different variables. In a subsequent section, we investigate the subindex of U_{Mt} that is constructed only from the real activity variables.

Panel A of Figure 1 plots the estimated $h = 1$ month-ahead macro uncertainty, denoted simply U_{Mt} , in standardized units along with the NBER recession dates. The horizontal bar corresponds to 1.65 standard deviation above unconditional mean of each series (which is standardized to zero). As is known from JLN (2015), the macro uncertainty index is strongly countercyclical and exhibits large spikes in the deepest recessions. The updated data U_{Mt} series shows much the same. Though U_{Mt} exceeds 1.65 standard deviations 48 times, they are clustered around the 1973–1975 and 1981–1982 recessions, as well as the GR of 2007–2009. Macroeconomic uncertainty has a correlation of -0.65 with the 12-month moving average of the growth in industrial production.

Panel B of Figure 1 plots the estimated $h = 1$ month-ahead financial uncertainty series, denoted U_{Ft} , over time, which is new to this paper. Now, U_{Ft} is a broad-based measure of time varying financial uncertainty using data from the bond market, stock market portfolio returns, and commodity markets. As seen from Figure 1, U_{Ft} is also countercyclical, though less so than U_{Mt} . Its correlation with industrial production is -0.39 . The series often exhibits spikes around the times when U_{Mt} is high. However, U_{Ft} is more volatile and spikes more frequently outside of recessions, the most notable being the 1987 stock market crash. Though observations on U_{Ft} exceed

¹⁹ Both datasets were previously used in Ludvigson and Ng (2007) and JLN (2015), but they are updated to the longer sample.

²⁰ Both *EPU* (series name *Baseline_overall_index*) and *EPN* (series name *News_Based_Policy_Uncert_Index*) were downloaded from https://www.policyuncertainty.com/media/US_Policy_Uncertainty_Data.xlsx. The series was downloaded in July 2017.

²¹ A detailed description of the series is given in the data Appendix of the online supplementary file at www.sydneyludvigson.com/s/ucc_data_Appendix.pdf.

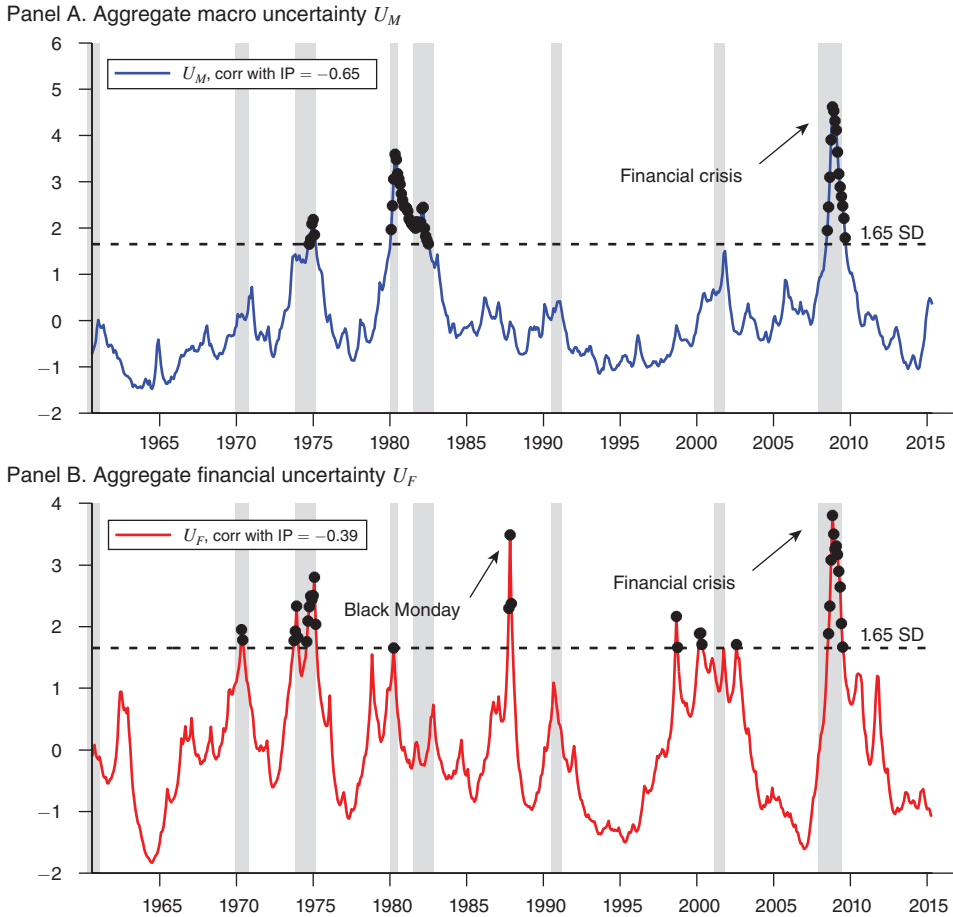


FIGURE 1. MACRO AND FINANCIAL UNCERTAINTY OVER TIME

Notes: The panels plot the time series of macro uncertainty U_M and financial uncertainty U_F expressed in standardized units. Shaded areas correspond to NBER recession dates. The horizontal line corresponds to 1.65 standard deviations above the unconditional mean of each series (which has been normalized to zero); the black dots are months when uncertainty is at least 1.65 standard deviations above the mean. Correlations with the 12-month moving average of IP growth are reported. The data span the period 1960:07 to 2015:04.

the 1.65 standard deviation line 33 times, they are spread out in seven episodes, with the 2008 and 1987 episodes being the most pronounced.

As is clear from Figure 1, both indicators of macro and financial uncertainty are serially correlated and hence predictable. They have comovements but also have independent variations as the correlation between them is only 0.58. However, this unconditional correlation cannot be given a structural interpretation. To the extent that our uncertainty variables measure expectations about future volatility, the heightened uncertainty measures can respond endogenously to events that are expected to happen, but they can also be exogenous changes to expected volatility. We use a VAR to capture the predictable variations, and then identify uncertainty shocks from the VAR residuals using the restrictions described above. We now turn to the implementation issues.

Implementation.—Estimates of \mathbf{B} that satisfy the reduced form covariance restrictions, the event constraints, and the external variable constraints together give the *identified* solution set denoted

$$\bar{\mathcal{B}}(\mathbf{B}; \bar{\mathbf{k}}, \bar{\boldsymbol{\tau}}, \mathbf{S}) = \left\{ \mathbf{B} = \hat{\mathbf{P}}\mathbf{Q} : \mathbf{Q} \in \mathcal{O}_n, \text{diag}(\mathbf{B}) > 0; \right. \\ \left. \bar{g}_Z(\mathbf{B}) = 0, \bar{g}_E(\mathbf{B}; \bar{\boldsymbol{\tau}}, \bar{\mathbf{k}}) \geq 0, \bar{g}_C(\mathbf{B}; \mathbf{S}) \geq 0 \right\}.$$

To simplify notation, we simply write $\bar{\mathcal{B}}(\mathbf{B}; \bar{\mathbf{k}}, \bar{\boldsymbol{\tau}}, \mathbf{S})$ as $\bar{\mathcal{B}}$. The unconstrained set $\hat{\mathcal{B}}$ is constructed using random rotations, as discussed above. A particular solution can be in both $\hat{\mathcal{B}}$ and $\bar{\mathcal{B}}$ only if all the event and external variable constraints are satisfied.

Construction of the identified solution set $\bar{\mathcal{B}}$ necessitates choice of the big shock constraint parameters $\bar{\mathbf{k}} = (\bar{k}_1, \bar{k}_2, \bar{k}_3, \bar{k}_4)'$. It should be clear that if the values for these parameters are overly restrictive, the identified solution set will be empty. If they are too unrestrictive, the constraints will have no identifying power. Shock-based restrictions are also not invariant to the system being analyzed because the data may have different variability, as well as different skewness, kurtosis, and cross-moments. Thus, the parameters for one system of data could be too restrictive for another. We therefore set values for $\bar{\mathbf{k}}$ using a data dependent procedure described below so they are consistent with the economic reasoning behind the constraints.

IV. Results for Systems with Macro Uncertainty

This section presents results for what we call our *base case empirical system*, with $\mathbf{X}_t = (U_{Mt}, ip_t, U_{Ft})'$ and one-month-ahead uncertainty ($h = 1$). Subsequent sections consider VARs with policy uncertainty or real activity uncertainty used in place of the macro uncertainty index U_{Mt} . Throughout the analysis we use $p = 6$ lags in the VARs, noting that using 12 lags makes no difference to the results. The online Appendix presents results for longer horizon uncertainty.

We begin with an investigation of “identification uncertainty,” namely the variation in the output produced by alternative combinations of the event and external variable constraints, as well as alternative specifications of the big shock events through the parameters $\bar{\mathbf{k}}$.²² To do so, we study the dynamic causal effects and propagating mechanisms of the shocks under different constraints and parameterizations using impulse response functions (IRFs). All figures below show identified sets of IRFs of each variable in the SVAR to a one standard deviation *increase* in each of structural shocks.

As a start, Figure 2 shows the identified sets under several cases when only minimal restrictions are imposed. The blue-shaded areas report IRFs for all values in the unconstrained set $\hat{\mathcal{B}}$, that is the set obtained by imposing *only* the reduced-form covariance restrictions $\bar{g}_Z(\mathbf{B}) = 0$. In the absence of additional identifying assumptions it is difficult to assign an interpretation to the shocks, but the case is useful as a benchmark. The figure shows that the covariance restrictions

²²We are grateful to Giorgio Primiceri for suggesting the term “identification uncertainty” for this investigation.

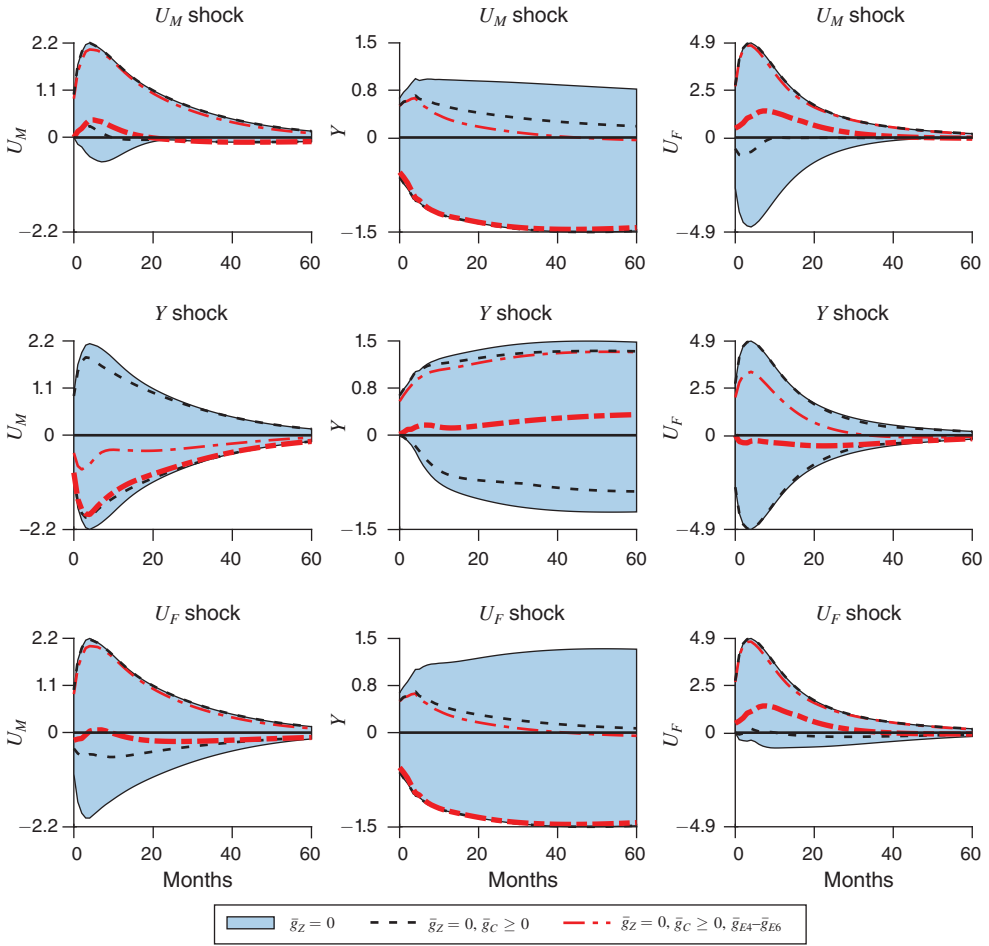


FIGURE 2. IRFS UNDER MINIMAL CONSTRAINTS

Notes: The figure reports identified set of impulse responses to positive, one standard deviation shocks for system $\mathbf{X} = (U_M, ip, U_F)'$ under different restrictions. $\bar{g}_Z(\mathbf{B}) = 0$ denotes covariance restrictions; $\bar{g}_C(\mathbf{e}(\mathbf{B}); \mathbf{S}) \geq 0$ denotes external variable restrictions; $\bar{g}_{E4}-\bar{g}_{E6}$ denotes all nonnegative event constraints \bar{g}_{E4} , \bar{g}_{E5} , and \bar{g}_{E6} . The sample spans the period 1960:07 to 2015:04.

alone produce inconclusive results due to the wide range of solutions retained, illustrating the problem of underidentification mentioned above.

Next, we add additional restrictions to shrink the unconstrained set $\hat{\mathcal{B}}$. The IRFs for an identified set obtained by imposing the covariance restrictions $\bar{g}_Z(\mathbf{B}) = 0$ and the external variable constraints $\bar{g}_C(\mathbf{e}(\mathbf{B}); \mathbf{S}) \geq 0$, but none of the six event constraints $\bar{g}_{E1}, \dots, \bar{g}_{E6}$, are shown in black dotted lines of Figure 2. The IRFs for an identified set obtained by imposing these restrictions plus the nonnegative event constraints $\bar{g}_{E4}, \bar{g}_{E5}, \bar{g}_{E6}$ but not the big shock event constraints $\bar{g}_{E1}, \bar{g}_{E2}, \bar{g}_{E3}$, are shown in red dotted lines. The bounds of the identified sets in these two cases are still uninformative for most IRFs plotted, but there is at least one clear and noteworthy result: the red-dotted lines show that it is not necessary to impose the big shock event constraints to find that macro uncertainty falls sharply in response

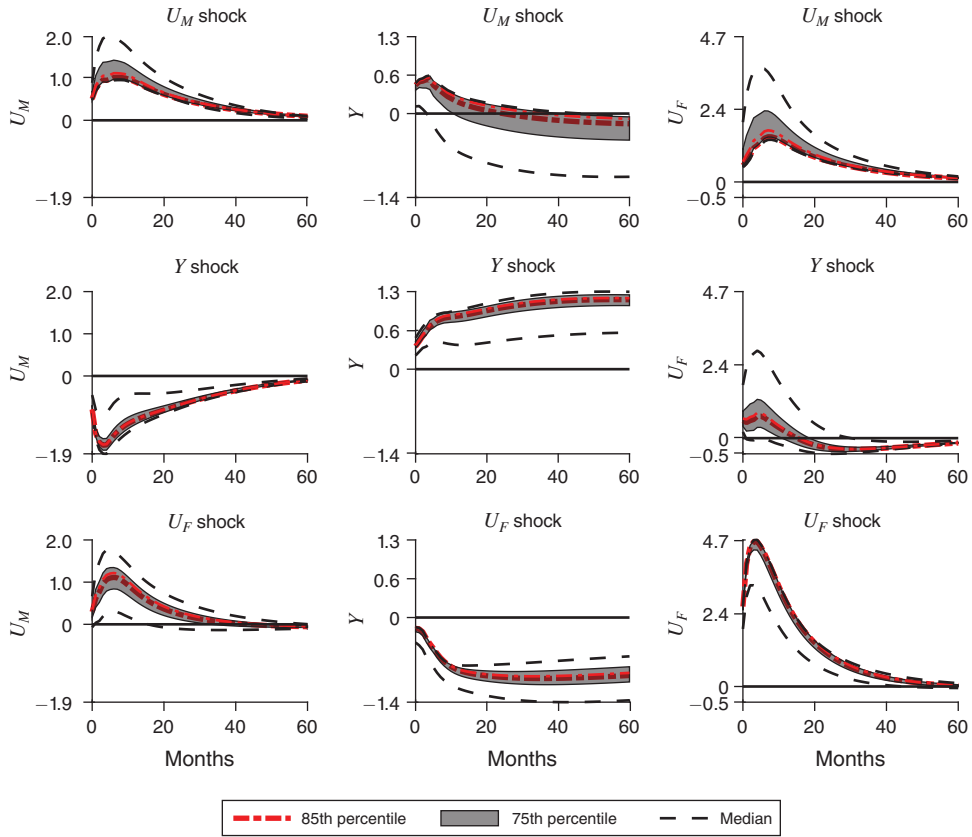
to positive ip shocks (subplot 2,1). Alternatively stated, negative ip shocks cause macro uncertainty to increase sharply. These endogenous movements in macro uncertainty persist for about five years after the real activity shock. Thus, even with this more minimal set of restrictions there is evidence that macro uncertainty rises endogenously in response to adverse first-moment shocks to real activity.

In order to obtain more conclusive evidence on the other dynamic responses, additional restrictions are needed. We now add to the previous constraints the big shock event constraints \bar{g}_{E1} , \bar{g}_{E2} , and \bar{g}_{E3} that require financial and/or macro uncertainty shocks to be large in the month of October of the 1987 crash, in the month of September of the 2008 Lehman collapse, and in the month of December of high real uncertainty shocks in 1970, respectively. But what constitutes a large shock in this system? To address this question, we reexamine the 1.5 million values of \mathbf{B} in the unconstrained set, $\hat{\mathbf{B}}$. In our sample, the largest shocks to U_{Ft} in $\hat{\mathbf{B}}$ using $h = 1$ month uncertainty are typically above four standard deviations, and similarly for U_{Mt} . The seventy-fifth percentile value of e_{Ft} in 1987:10 is 4.16, and is 4.57 in 2008:09. The seventy-fifth percentile value of e_{Mt} in 1970:12 is 4.05 and is 4.73 in 2008:09. If shocks were Gaussian, the probability of a shock of these magnitudes would be less than $1.3e-4$. But as we show below, the identified shocks are non-Gaussian and exhibit substantial excess skewness and leptokurtosis.

The parameters $\bar{\mathbf{k}} = (\bar{k}_1, \bar{k}_2, \bar{k}_3, \bar{k}_4)'$ stipulate how big a “big shock” must be during the events named in constraints \bar{g}_{E1} , \bar{g}_{E2} , and \bar{g}_{E3} . Figure 3 shows the IRFs under different values for these parameters, obtained when these restrictions are added to $\bar{g}_Z(\mathbf{B}) = 0$, $\bar{g}_C(\mathbf{e}(\mathbf{B}); \mathbf{S}) \geq 0$, and \bar{g}_{E1} , \bar{g}_{E2} , and \bar{g}_{E3} . That is, we now include the full set of event constraints $\bar{g}_E(\mathbf{e}_t(\mathbf{B}); \bar{\tau}, \bar{\mathbf{k}}) \geq 0$. One case sets these parameters equal to the seventy-fifth percentile values of e_{Ft} and/or e_{Mt} in $\hat{\mathbf{B}}$ for the event dates $\bar{\tau}_1$, $\bar{\tau}_2$, and $\bar{\tau}_3$, thereby requiring a “big” shock to e_{jt} , $j = M, F$ to be in the top 25 percent of all observed e_{jt} in $\hat{\mathbf{B}}$ for that date. A second case sets them so that a large shock in these episodes needs to merely exceed their respective median values. Under this parameterization a “large” financial uncertainty shock need be only be 2.8 rather than 4.2 standard deviations above the mean in 1987:10, and only 1.9 standard deviations above the mean rather than 4.6 in 2008:09. Likewise, a “large” macro uncertainty shock need be only be 2.3 rather than 4 standard deviations above the mean in 1970:12, and only 1.9 standard deviations above the mean rather than 4.7 in 2008:09.²³ A third case sets $\bar{\mathbf{k}}$ so that a large shock needs to exceed their respective eighty-fifth percentile values. Panel A of Figure 3 shows the IRFs when \bar{k}_1 and \bar{k}_4 , the parameters governing the size of big shock events in 1987:10 (stock market crash) and 1970:12 (run-up to the Bretton Woods collapse), are simultaneously altered between these parameterizations while \bar{k}_2 and \bar{k}_3 held fixed at their respective seventy-fifth percentile values. Panel B of Figure 3 shows the IRF when \bar{k}_2 and \bar{k}_3 , the parameters governing the size of the big shock event for U_{Ft} and/or U_{Mt}

²³The constraint \bar{g}_{E2} requires either a large e_{Ft} or a large e_{Mt} (or both) in $\bar{\tau}_2 = 2008:09$. An examination of the unconstrained set shows that there are no solutions that have large values for both $e_{F\bar{\tau}_2}$ and $e_{M\bar{\tau}_2}$ in 2008:09, if large is defined as being in the top 25 percent of their respective marginal distributions in 2008:09. The estimation procedure must therefore choose which uncertainty shock was large. Among all solutions in the base case identified set, 100 percent of them place the big uncertainty shock in U_{Ft} , rather than U_{Mt} in 2008:09. By contrast, there are solutions that have values for both shocks in 2008:09 that exceed their fiftieth percentile values.

Panel A. Change in 1987 and 1970 event



(continued)

FIGURE 3. IRFS UNDER DIFFERENT PARAMETERIZATIONS OF BIG SHOCKS

in 2008:09 (Lehman collapse) are simultaneously altered, while \bar{k}_1 and \bar{k}_4 are held fixed at their respective seventy-fifth percentile values. Several results stand out.

First, under all of these different parameterizations, positive shocks to financial uncertainty e_F lead to a sharp decline in production that persists for many months. All solutions that satisfy the identification restrictions have this pattern and the identified set of responses is bounded well away from zero as the horizon increases. Positive perturbations to e_{Ft} also cause U_{Mt} to increase sharply. These results lend support to the hypothesis that heightened financial uncertainty is an exogenous impulse that causes declines in real activity. However, there is little evidence that heightened financial uncertainty is a *result* of lower economic activity. Instead, positive shocks to production increase financial uncertainty.

Second, while we find no evidence that high financial uncertainty is a consequence of lower economic activity, the results for macro uncertainty are quite different. As

Panel B. Change in Lehman event

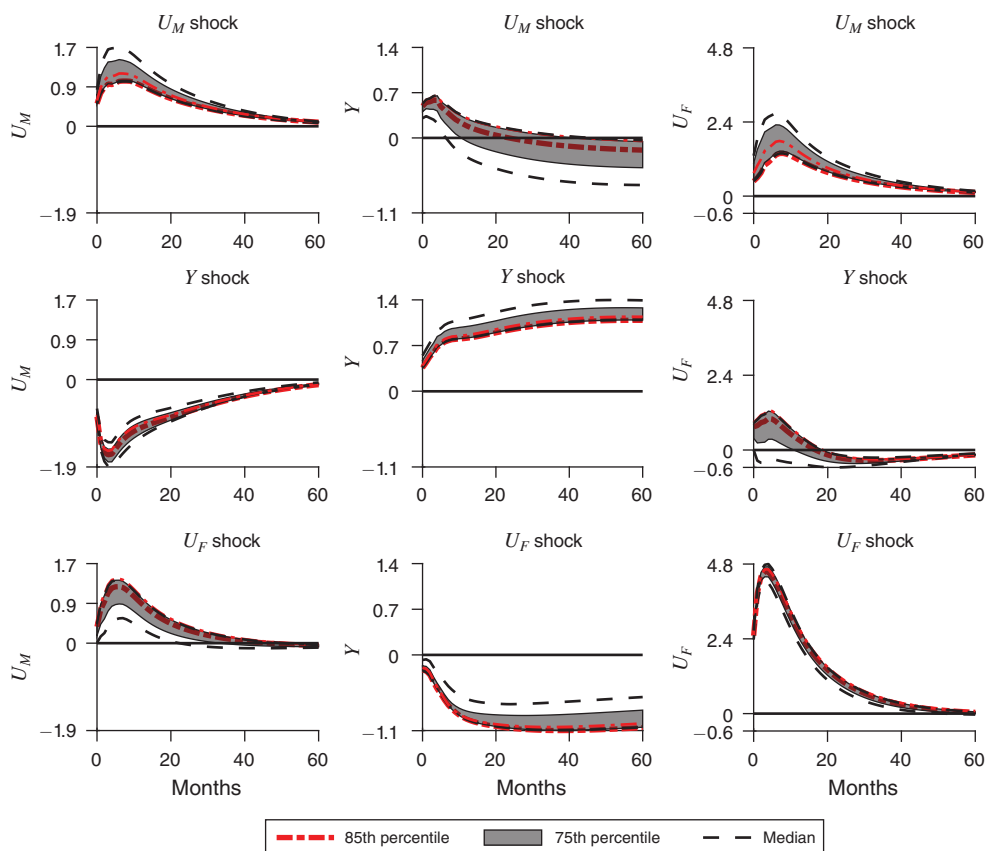


FIGURE 3. IRFS UNDER DIFFERENT PARAMETERIZATIONS OF BIG SHOCKS (continued)

Notes: The figure reports identified set of impulse response to positive, one standard deviation shocks for system $\mathbf{X} = (U_M, ip, U_F)'$. Panel A reports sets of solutions obtained when \bar{k}_1 and \bar{k}_4 are set to the median value of the unconstrained set while \bar{k}_2 and \bar{k}_3 are set to the seventy-fifth percentile of the unconstrained set. Panel B reports sets of solutions obtained when the \bar{k}_2 and \bar{k}_3 are set to the median while \bar{k}_1 and \bar{k}_4 are set to the seventy-fifth percentile of the unconstrained set. Results in both panels impose external variable constraints \bar{g}_C and nonnegative event constraints \bar{g}_{E4} to \bar{g}_{E6} . The sample spans the period 1960:07 to 2015:04.

in the previous figure, we see that macro uncertainty falls sharply in response to positive ip shocks, or that negative ip shocks cause macro uncertainty to increase. These endogenous movements in macro uncertainty are persistent and strongly apparent in all the solutions of the identified set under each of these different parameterizations.

Third, there is little evidence that the observed negative correlation between macro uncertainty and real activity is the result of positive macro uncertainty shocks that drive down production. The top middle subplots of both panels A and B show that all solutions in these identified sets imply that positive macro uncertainty shocks *increase* real activity in the short run, consistent with growth options theories discussed above. On the other hand, all solutions in the identified sets imply that positive macro uncertainty shocks reduce production in the long run. The horizon over which this is estimated to occur is sensitive to the tightness of the big shock event

constraints, with tighter constraints implying that these effects are pushed out farther into the future. This finding suggests that higher macro uncertainty in recessions is better characterized as a response to lower economic activity rather than an immediate causal factor in recessions. These results do not rule out the possibility that the endogenous response of macro uncertainty to other adverse shocks might be important for the amplification of these shocks, even if they do not cause recessions. In summary, Figure 3 shows that, while the bounds of the identified set are inevitably wider under weaker constraints, they remain nonetheless informative, implying that the findings are not highly sensitive to the definition of what constitutes “big” in the big shock constraints.

One salient finding from Figure 3 is that macro and financial uncertainty exhibit opposite-signed effects on production upon impact. A positive financial uncertainty shock drives down production on impact, while a positive macro uncertainty shock drives it up. These impact responses may be read off of the off-diagonal elements of the estimated \mathbf{B} matrices, where B_{YM} denotes the impact response of Y to an e_M shock, and B_{YF} denotes the impact response of Y to an e_F shock. For all of the solutions presented in Figure 3, $B_{YM} > 0$ and $B_{YF} < 0$. We now investigate further which of our identifying restrictions are crucial for these results.

To do so, Figure 4 displays the distribution of values for B_{YM} and B_{YF} found in the identified sets under a variety of different identifying restrictions. The first row of the figure shows the histogram of values for three cases: (i) for all values in the unconstrained set \hat{B} , obtained by imposing only the covariance restrictions $\bar{g}_Z(\mathbf{B}) = 0$ (blue histogram), (ii) for all values in an identified set obtained by imposing the covariance restrictions and event constraints, but not the external variable constraints $\bar{g}_Z(\mathbf{B}) = 0$, $\bar{g}_E(\mathbf{e}_t(\mathbf{B}); \bar{\tau}, \bar{\mathbf{k}}) \geq 0$ (red histogram), and (iii) for all values in an identified set obtained by imposing the full set of covariance, event, and external variable constraints $\bar{g}_Z(\mathbf{B}) = 0$, $\bar{g}_C(\mathbf{e}(\mathbf{B}); \mathbf{S}) \geq 0$, $\bar{g}_E(\mathbf{e}_t(\mathbf{B}); \bar{\tau}, \bar{\mathbf{k}}) \geq 0$ (black histogram). For each of these cases, the event constraint parameters $\bar{\mathbf{k}} = (\bar{k}_1, \bar{k}_2, \bar{k}_3, \bar{k}_4)'$ are set to their respective seventy-fifth percentile values in \hat{B} . Notably, the covariance/event-only constrained solutions for B_{YF} are all negative while those for B_{YM} are all positive. By contrast, in the unconstrained set the distributions of B_{YF} and B_{YM} contain both positive and negative values. This shows that the event constraints alone are enough to pin down the differing signs of these parameters. Once we add the external variable constraints to the event and covariance restrictions, the distribution of B_{YM} , with all positive values, is shifted more toward zero, while the distribution of B_{YF} , with all negative values, is shifted more away from zero. Thus, the external variables constraints prevent the response of production to a positive macro uncertainty shock from being too positive, and prevent the response of production to a positive financial uncertainty shock from being too small in absolute value. In short, the event constraints restrict the signs of B_{YF} and B_{YM} , while the external variable constraints restrict their magnitudes.

The second row of Figure 4 shows the analogous histograms under another alternative set of restrictions: (i) that for the unconstrained set $\bar{g}_Z(\mathbf{B}) = 0$ (blue histogram), (ii) that for an identified set if we impose all constraints *except* the Lehman event constraint $\bar{g}_Z(\mathbf{B}) = 0$, $\bar{g}_C(\mathbf{e}(\mathbf{B}); \mathbf{S}) \geq 0$, $\bar{g}_{Ej}, \forall j \neq 2$ (red histogram), and (iii) that for the identified set under the full set of constraints $\bar{g}_Z(\mathbf{B}) = 0$,

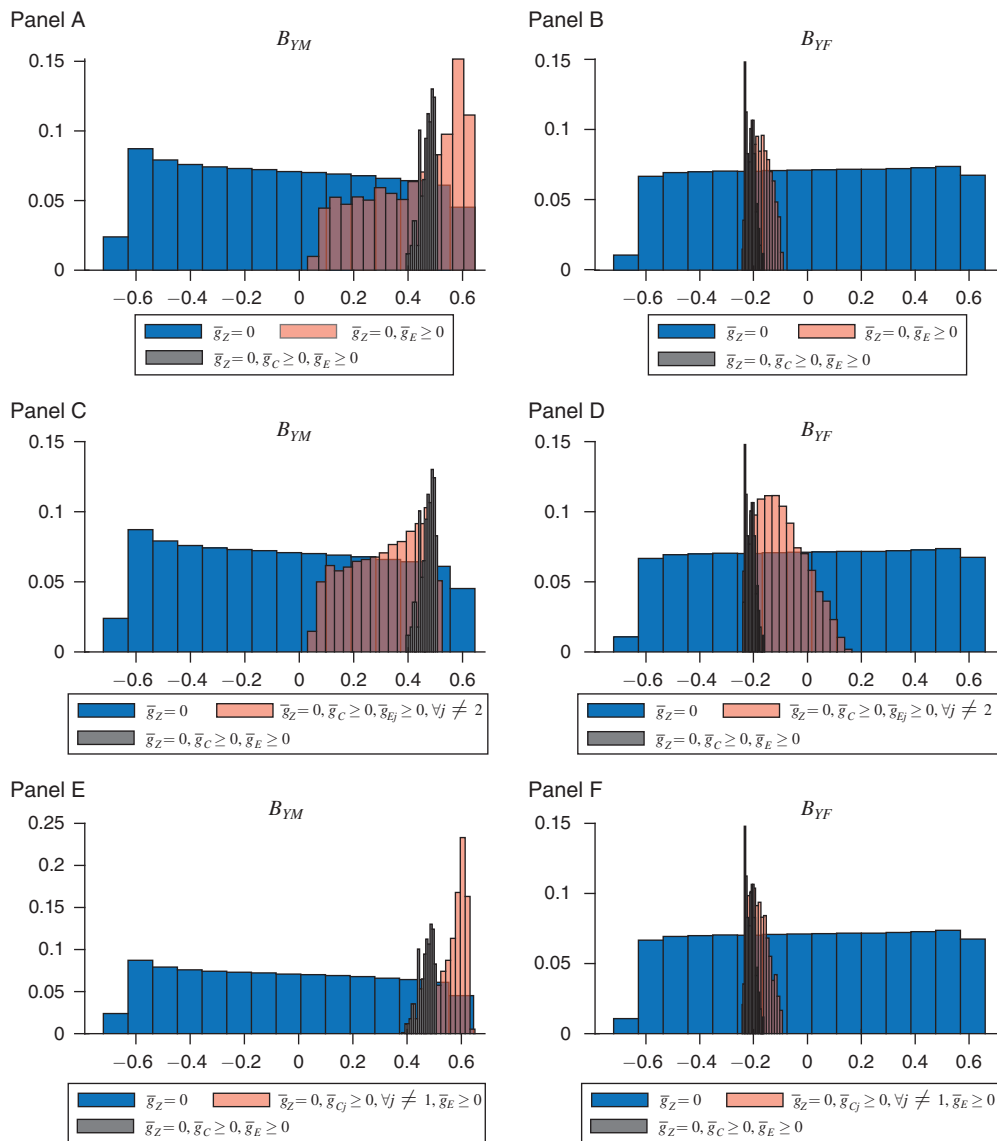


FIGURE 4. DISTRIBUTION OF B_{YF} AND B_{YM}

Notes: The figure displays histograms for all values of B_{YM} and B_{YF} in an identified set under different restrictions. $\bar{g}_Z(\mathbf{B}) = 0$ denotes covariance restrictions; $\bar{g}_C(\mathbf{e}(\mathbf{B}); \mathbf{S}) \geq 0$ denotes external variable restrictions; $\bar{g}_E(\mathbf{e}_t(\mathbf{B}); \bar{\tau}, \bar{\mathbf{k}}) \geq 0$ denotes the event restrictions; $\bar{g}_{Ej} \geq 0, \forall j \neq 2$ denotes all event restrictions except the Lehman event, $\bar{g}_{Cj} \geq 0, \forall j \neq 1$ denotes all external variable restrictions except the stock market restriction. The sample spans the period 1960:07 to 2015:04.

$\bar{g}_C(\mathbf{e}(\mathbf{B}); \mathbf{S}) \geq 0, \bar{g}_E(\mathbf{e}_t(\mathbf{B}); \bar{\tau}, \bar{\mathbf{k}}) \geq 0$ (black histogram). What is clear from this plot is that the Lehman event is crucial for obtaining informative bounds about the impact response of production to a financial uncertainty shock. Without the Lehman event constraint, the distribution of values for B_{YF} contains both positive and

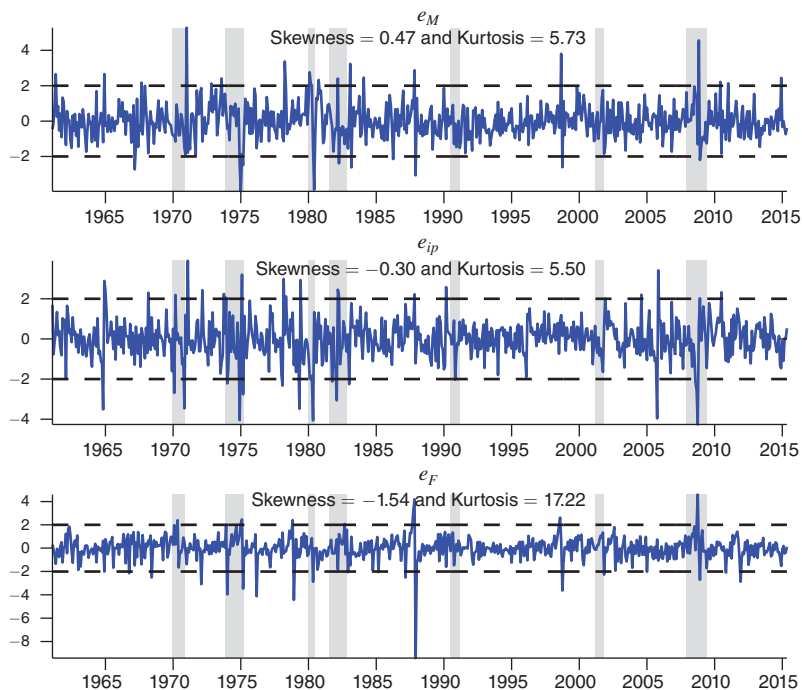
negative values. The distribution of values for B_{YM} , however, continues to contain only positive values even without the Lehman event constraint, though the range of positive values is much wider than for the base case. A premise of this paper is that the 2007–2009 financial crisis and Lehman collapse was an important rare event that can help distinguish the transmission of financial versus real uncertainty shocks. This maintained assumption is supported by these results, which shows that if the Lehman collapse is not accompanied by at least a modestly sized uncertainty shock of one type or another, the estimation has a harder time distinguishing their separate roles.

Panels E and F of Figure 4 show the analogous histograms under another a third set of restrictions: (i) that for the unconstrained set $\bar{g}_Z(\mathbf{B}) = 0$ (blue histogram), (ii) that for an identified set if we impose the full set of constraints *except* the stock market external variable constraint $\bar{g}_Z(\mathbf{B}) = 0$, $\bar{g}_{Cj}, \forall j \neq 1$, $\bar{g}_E(\mathbf{e}_t(\mathbf{B}); \bar{\tau}, \bar{\mathbf{k}}) \geq 0$ (red histogram), and (iii) that for the identified set under the full set of constraints $\bar{g}_Z(\mathbf{B}) = 0$, $\bar{g}_C(\mathbf{e}(\mathbf{B}); \mathbf{S}) \geq 0$, $\bar{g}_E(\mathbf{e}_t(\mathbf{B}); \bar{\tau}, \bar{\mathbf{k}}) \geq 0$ (black histogram). Compared to the case with both sets of external variable constraints, eliminating the stock market external variable constraint has two main effects. First, it shifts the distribution of B_{YM} , which gives the impact response of ip to a U_M shock to the right. Since these values are all positive, this says that the restriction that macro uncertainty shocks should be negatively correlated with stock market returns is important for limiting the magnitude of the positive response of production to a U_M shock. Second, it shifts the distribution of B_{YF} , which gives the impact response of ip to a U_F shock, closer to zero. Since these values are all negative, this says that the restriction that uncertainty shocks should be negatively correlated with stock market returns is important for obtaining a sizable magnitude in the estimated adverse affects of financial uncertainty shocks for output.

We may summarize the results so far as follows. After investigating a number of different combinations of the event and external variable constraints, and under a range of different parameterizations of the big shock event constraints, we find that results take one of three general forms: either the constraints are too few or too weak to come to any conclusion without additional assumptions (the identified set is wide), or the constraints are tightened to a point where they are incompatible with the data (the identified set is empty), or the qualitative results are clear-cut and take the form presented in Figure 3. These results imply that financial uncertainty shocks cause declines in production. But no matter which of the above configurations we consider, there is no basis for concluding that positive macro uncertainty shocks cause declines in production, at least initially. By contrast, evidence that macro uncertainty rises in recessions in response to other adverse shocks holds under a wide range of restrictions.

A. Results Under the Full Set of Constraints: A Closer Look

We now present a number of additional results, including statistical uncertainty, for an identified set obtained by imposing the full set of constraints $\bar{g}_Z(\mathbf{B}) = 0$, $\bar{g}_E(\mathbf{B}; \bar{\tau}, \bar{\mathbf{k}}) \geq 0$, $\bar{g}_C(\mathbf{B}; \mathbf{S}) \geq 0$. For this purpose, we set $\bar{\mathbf{k}} = (\bar{k}_1, \bar{k}_2, \bar{k}_3, \bar{k}_4)'$ equal

Panel A. Time series of e shocks for one solution*(continued)*FIGURE 5. STRUCTURAL SHOCKS e

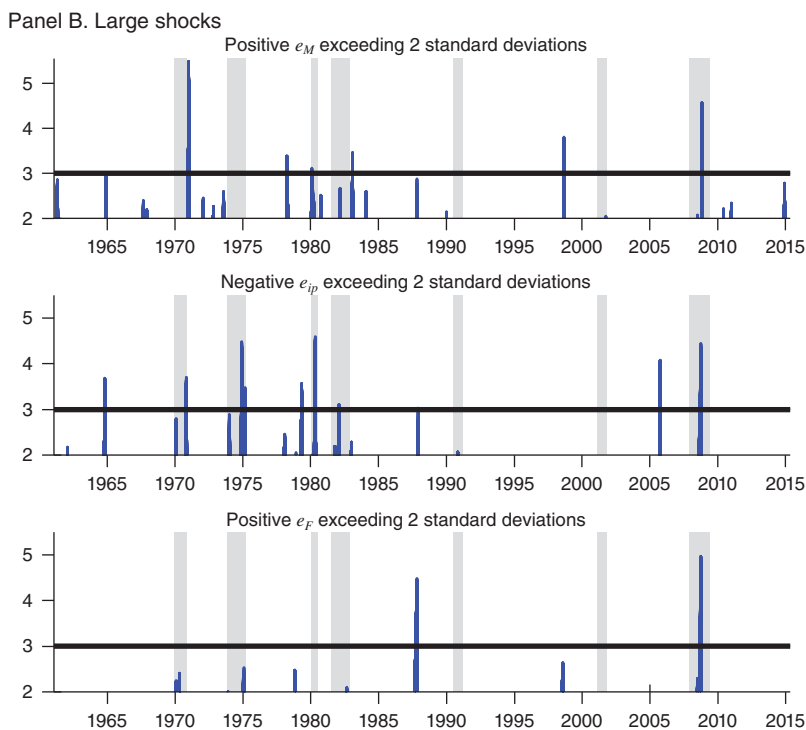
to their respective seventy-fifth percentile values, thereby requiring a “big” shock to be in the top 25 percent of all shocks in $\hat{\mathcal{B}}$ during those episodes.

To get a sense of the behavior of the shocks in this specification, it is instructive to examine the time series of shocks implied by a single solution from the identified set $\bar{\mathcal{B}}$. For this purpose, we use what will be referred to as the “maxG” solution:

$$(3) \quad \mathbf{B}^{\max G} \equiv \arg \max_{\mathbf{B} \in \bar{\mathcal{B}}} \bar{g}_C(\mathbf{B})' \bar{g}_C(\mathbf{B}).$$

This is the single solution in the identified set for which the inequalities pertaining to the external variable constraints are collectively maximized, as measured by an equally-weighted quadratic norm. Though no one solution in $\bar{\mathcal{B}}$ is any more likely than another, this one serves as a useful reference point, insofar as it captures features shared by most solutions in the identified set.

Panel A of Figure 5 presents the time series of the standardized shocks $(e_{M_t}, e_{ip_t}, e_{F_t})'$ for the maxG solution. Importantly, our identified shocks are both heteroskedastic and non-Gaussian, being more volatile in some episodes than others. All three types of shocks display strong departures from normality with excess skewness and/or excess kurtosis. The largest of the positive e_{ip_t} shocks is recorded in 1971:01 followed by 2005:10, while the largest of the negative e_{ip_t} shocks is recorded in 2008:09, followed by 1980:04. There also appears to be a moderation in

FIGURE 5. STRUCTURAL SHOCKS e (continued)

Notes: The figure shows results from the identified set for system $\mathbf{X}_t = (U_{Mt}, ip_t, U_{Ft})'$ using the full set of constraints with each argument of \mathbf{k} set to their seventy-fifth percentile values of the unconstrained set. Panel A reports the time series of the structural shocks $e = B^{-1}\eta_t$ for one particular solution from this set, referred to in the text as the maxG solution. The horizontal line corresponds to three standard deviations above/below the unconditional mean of each series. Panel B exhibits all shocks in the identified set that are at least two standard deviations above the unconditional mean for e_M and e_F and at least two standard deviations below the mean for e_{ip} . The sample spans the period 1960:07 to 2015:04.

the volatility of the ip_t shocks in the post-1983 period. For this particular solution, the largest positive e_{Mt} shock is in 1970:12 (run-up to the Bretton Woods collapse), followed by the shock in 2008:10 (the month after the Lehman collapse). The largest positive e_{Ft} shock is recorded in 2008:09 (month of the Lehman collapse) followed by 1987:10 (Black Monday). For e_{Ft} , the extreme but transitory nature of the 1987 stock market crash leads to a very large spike upward in e_{Ft} in the month of the crash, followed by a very large spike downward in the month following the crash as the market recovered strongly and quickly. While this episode magnifies the spike in e_{Ft} in 1987, it is largely orthogonal to real activity and macro uncertainty. Observe that the large ip_t shock in 2005:10 is not associated with a contemporaneous spike in uncertainty, while there are several spikes in both types of uncertainty that do not coincide with spikes in e_{ip} .

It is worth noting that, under this specification, both the 1970 and 1987 event constraints alone eliminate 75 percent of the solutions, while the Lehman event constraint alone eliminates 90 percent. These event constraints together with the constraint that the cumulative sum of real activity shocks in the GR should not

be above average eliminate 99 percent of the solutions in $\hat{\mathcal{B}}$. Of course, 1 percent of 1.5 million draws is still a nontrivial number. But when all event constraints are combined with the external variable constraints, we are left with 169 accepted draws, which is 25 percent of the sample size.

We now focus on large “adverse” shocks, namely large positive uncertainty shocks and large negative real activity shocks recovered by the econometric methodology. Panel B of Figure 5 displays the date and size of all e_{Mt} and e_{Ft} shocks in the identified set that are at least two standard deviations above the mean and all negative e_{ipt} shocks exceeding two standard deviations. In view of the nonnormality of the shocks, the figure also plots horizontal lines corresponding to three standard deviations of the unit shocks.

Panel B of Figure 5 shows that the solutions identify big financial uncertainty shocks in October 1987 and in one or more months of 2008. Panel B shows many large adverse values of e_{Mt} and e_{ipt} in the GFC/GR episode. Indeed, all of the solutions in the identified set have an e_{Mt} greater than three standard deviations above the mean and an e_{ipt} less than -3 standard deviations below the mean in at least one month of the 2007–2009 GFC/GR. It is a result of the analysis rather than an imposition of constraints that there were big shocks everywhere in this episode. These big shock episodes are partly responsible for the non-Gaussian aspects of the shocks. It would be desirable for dynamic equilibrium models that wish to study the effects of uncertainty to incorporate shocks with such non-Gaussian features.

Panel B of Figure 5 shows that the dates of large increases in e_M are less clustered. They generally coincide with, or occur shortly after, the big real activity shocks and the financial uncertainty shocks. Large macro uncertainty shocks occurred more frequently in the pre-1983 than the post-1983 sample, consistent with a Great Moderation occurring over the period ending in the GR.

The middle subplot of panel B of Figure 5 shows that large negative real activity shocks are in alignment with all post-war recessions with one exception: the negative real activity shock in 2005 is not immediately associated with a recession, but it could be the seed of the GR that followed. It is clear that parts of the real economy were showing signs of deterioration prior to the onset of the recession as dated by the NBER. For example, it is known that the housing market led the 2007–2009 recession (e.g., see Favilukis, Ludvigson, and Van Nieuwerburgh (2017) for a discussion). Indeed, all 10 housing series in \mathcal{X}^M (most pertaining to housing starts and permits series) exhibit sharp declines starting in September 2005 and continuing through 2006, thereby leading the GR.

Figure 6 shows the identified set of dynamic responses under this specification in solid lines, along with 95 percent confidence bands for the identified set in dotted lines. (The confidence bands are constructed using a repeated sampling algorithm described in detail in the online Appendix.) The sampling uncertainty widens the range of likely dynamic responses but does not change the basic tenor of the findings. In particular, the results continue to show that positive financial uncertainty shocks have a persistent depressing effect on production, while macro uncertainty responds endogenously to adverse production and financial uncertainty shocks. In considering these results, it is important to bear in mind that they show the effects of one standard deviation shocks. But many e_{Ft} in the episodes that correspond to

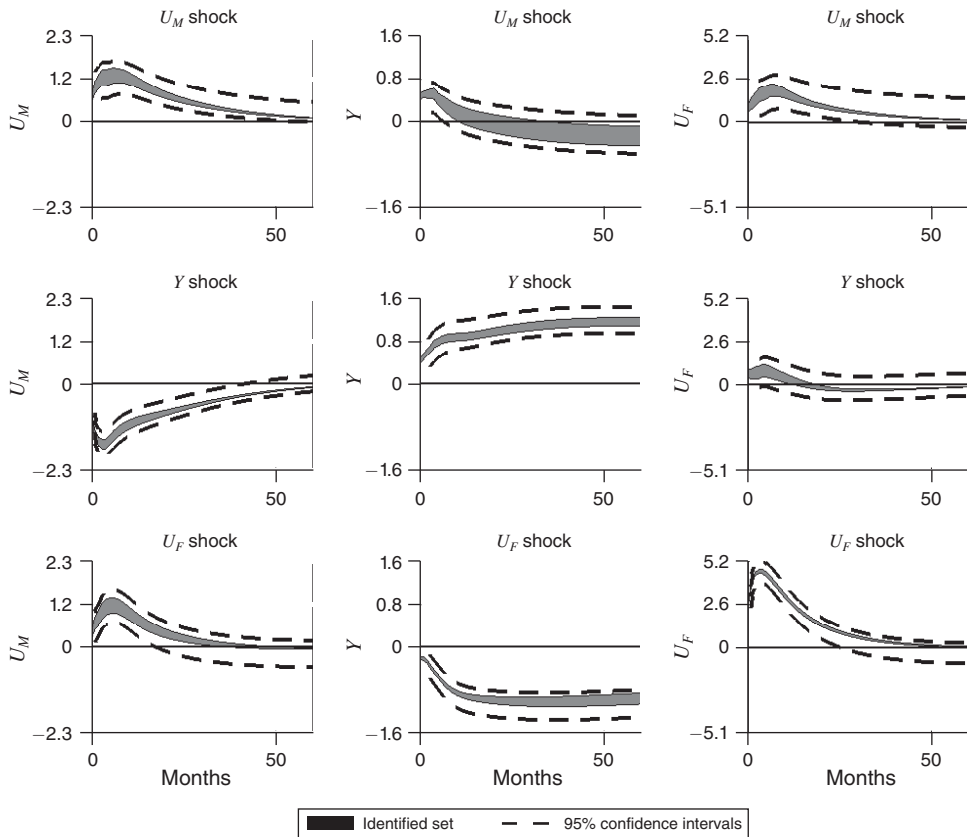


FIGURE 6. IRFs WITH CONFIDENCE BANDS

Notes: The figure shows results from the identified set for system $\mathbf{X}_t = (U_{Mt}, ip_t, U_{Ft})'$ using the full set of constraints with each argument of $\bar{\mathbf{k}}$ set to their seventy-fifth percentile values of the unconstrained set. The solid lines report the identified set of impulse response to positive, one standard deviation shocks in units of percentage points. The dashed lines report 95 percent confidence intervals (CI) for the identified set. The sample spans the period 1960:07 to 2015:04.

our event constraints are four or more standard deviations above zero. Thus, the effects of a shock of this magnitude would be many times larger than that shown in in Figure 6. A one standard deviation increase in e_{Ft} reduces ip by 1 percent after 60 months, according to the median response at that horizon. This decline represents about a 1.3 standard deviation change in monthly ip growth. So a four standard deviation shock would reduce ip by 4 percent, which represents a 5.2 standard deviation change in monthly ip growth. Infrequent big shocks, when they hit, can have large effects.

Decomposition of Variance.—To give a sense of the quantitative importance of these shocks, we perform a decomposition of variance for each solution in the identified set. We report the fraction of s -step-ahead forecast error variance attributable to each structural shock e_{Mt} , e_{ip_t} , and e_{Ft} for $s = 1$, $s = 12$, $s = \infty$, and s_{\max} , where s_{\max} is the horizon at which the fraction of forecast error variance is maximized. Because we have a set of solutions, we have a range of forecast error variances for

TABLE 1—VARIANCE DECOMPOSITION

s	SVAR $(U_M, ip, U_F)'$			SVAR $(EPU, ip, U_F)'$		
	(1)			(2)		
	Fraction variation in U_M			Fraction variation in EPU		
	U_M shock	ip shock	U_F shock	EPU shock	ip shock	U_F shock
1	[0.19, 0.41]	[0.52, 0.72]	[0.05, 0.22]	[0.15, 0.76]	[0.03, 0.61]	[0.20, 0.44]
12	[0.22, 0.46]	[0.39, 0.57]	[0.13, 0.36]	[0.10, 0.46]	[0.02, 0.34]	[0.52, 0.70]
∞	[0.25, 0.49]	[0.39, 0.59]	[0.10, 0.30]	[0.09, 0.38]	[0.02, 0.28]	[0.60, 0.75]
s_{\max}	[0.25, 0.49]	[0.52, 0.72]	[0.13, 0.36]	[0.18, 0.81]	[0.03, 0.64]	[0.60, 0.75]
	Fraction variation in ip			Fraction variation in ip		
	U_M shock	ip shock	U_F shock	EPU shock	ip shock	U_F shock
1	[0.36, 0.60]	[0.31, 0.53]	[0.06, 0.12]	[0.04, 0.72]	[0.16, 0.82]	[0.09, 0.17]
12	[0.07, 0.21]	[0.40, 0.60]	[0.31, 0.40]	[0.03, 0.58]	[0.12, 0.64]	[0.26, 0.37]
∞	[0.02, 0.07]	[0.47, 0.64]	[0.32, 0.51]	[0.13, 0.74]	[0.04, 0.60]	[0.19, 0.29]
s_{\max}	[0.37, 0.62]	[0.47, 0.64]	[0.38, 0.54]	[0.13, 0.74]	[0.22, 0.83]	[0.27, 0.39]
	Fraction variation in U_F			Fraction variation in U_F		
	U_M shock	ip shock	U_F shock	EPU shock	ip shock	U_F shock
1	[0.03, 0.14]	[0.01, 0.07]	[0.84, 0.94]	[0.01, 0.11]	[0.07, 0.35]	[0.62, 0.84]
12	[0.08, 0.23]	[0.00, 0.05]	[0.76, 0.89]	[0.02, 0.30]	[0.06, 0.48]	[0.41, 0.66]
∞	[0.11, 0.28]	[0.02, 0.05]	[0.70, 0.86]	[0.04, 0.38]	[0.06, 0.51]	[0.35, 0.59]
s_{\max}	[0.11, 0.28]	[0.02, 0.10]	[0.84, 0.94]	[0.04, 0.38]	[0.11, 0.51]	[0.64, 0.84]

Notes: This table shows results from the identified set for system $\mathbf{X}_t = (U_M, ip, U_F)'$ using the full set of constraints with each argument of $\bar{\mathbf{K}}$ set to their seventy-fifth percentile values of the unconstrained set. Each panel shows the fraction of s -step-ahead forecast error variance of the variable given in the panel title that is explained by the shock named in the column heading. The row denoted " $s = s_{\max}$ " reports the maximum fraction of forecast error variance explained across all VAR forecast horizons s . The numbers in brackets represent the ranges for these numbers across all solutions in the identified set. The data are monthly and span the period 1960:07 to 2015:04.

each s . Column 1 of Table 1 reports the range of values for the \mathbf{X}_t system. The right column 2 of Table 1 are results for an alternative measure of uncertainty and will be discussed below.

According to the top row, real activity shocks e_{ipt} have sizable effects on macroeconomic uncertainty U_M , with the fraction of forecast error variance ranging from 0.52 to 0.72 at the s_{\max} horizon. But according to the bottom row, these same shocks have small effects on financial uncertainty U_F , with a range of forecast error variance from 0.02 to 0.10 at horizon s_{\max} . The middle row shows that positive macro uncertainty shocks e_{Mt} , which increase rather than decrease real activity, explain a surprisingly large fraction of production, with effects at s_{\max} horizon ranging from 0.37 to 0.62.

Though financial uncertainty shocks e_{Ft} have a small contribution to the one-step-ahead forecast error variance of ip_t , their relative importance increases over time so that they account for 0.38 to 0.54 of the forecast error variance in ip_t at the s_{\max} horizon. Financial uncertainty is unlike macro uncertainty or real activity in that its variation is far more dominated by its own shocks. As seen from Table 1, e_{Ft} shocks explain between 0.84 and 0.94 of the $s = 1$ step-ahead forecast error variance in U_{Ft} , and between 0.70 and 0.86 at the $s = \infty$ horizon. At the s_{\max} horizon, the range of forecast error variance is 0.84 to 0.94.

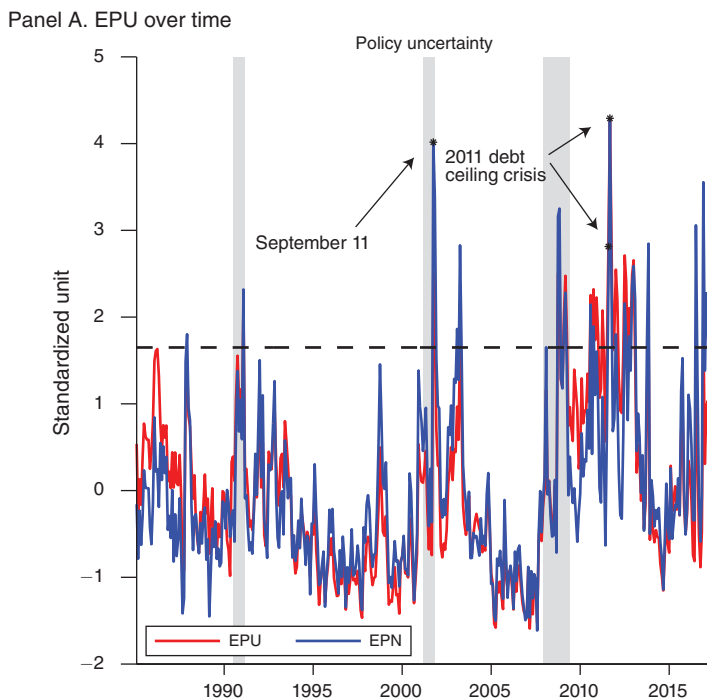
To summarize, the variance decomposition shows that positive real activity shocks e_{ipt} have quantitatively large persistent and negative effects on macro uncertainty U_{Mt} . In turn, positive macro uncertainty shocks e_{Mt} have positive effects

on production, especially in the short run. By contrast, positive financial uncertainty shocks e_{Ft} have large negative effects on production, especially in the long run. Across all VAR forecast horizons, the forecast error variance of financial uncertainty is the least affected by shocks other than its own, implying that U_{Ft} is quantitatively the most important exogenous impulse in the system.

Recursive Identification.—The assumptions in our event and external variable constraints do not rule out the possibility of a recursive structure. If such a structure is consistent with the data, our identifying restrictions are free to recover it. With three variables in the SVAR, there are six possible recursive orderings corresponding to six different 3×1 vectors of elements of \mathbf{B} that must be jointly zero. It is straightforward to assess whether our identified solutions are consistent with a recursive structure by examining the distribution of solutions in the identified set for four elements of the \mathbf{B} matrix: \hat{B}_{YF} , \hat{B}_{YM} , \hat{B}_{MY} , and \hat{B}_{FM} . None of the distributions contain any values near zero. The minimum absolute values in the identified for each are 0.002, 0.004, 0.007, and 0.005, respectively. These correspond to the smallest (in absolute terms) impact responses in the identified set reported in Figure 6, subplots (3, 2), (1, 2), (2, 1) and (1, 3), respectively. For each case, the 95 percent confidence interval for the identified set of impact responses also does not include zero, showing that, although small in absolute terms, the responses differ significantly from zero once we take into account sampling variability in the data. The implication is that the recursive structure is inconsistent with any recursive ordering across all solutions in the identified set. The dynamic responses reported in Figure 6 are similar to an SVAR that imposes B_{FY} and B_{MF} to be zero, or close to zero, while restricting B_{YF} to be in the range $(-0.02, 0)$. If, in addition, either B_{YM} (giving the impact response of Y to a change in e_M) or B_{YF} (giving the impact response of Y to a change in e_F) were estimated to be zero, our estimates would recover a recursive structure. But our event and external variable restrictions rule this out. Panel A of Figure 4 above showed why: the event constraints restrict B_{YF} to be negative and B_{YM} to be positive. The external variable constraints restrict their magnitudes. The finding underscores the challenges of relying on convenient timing assumptions to sort out cause and effect in the relationship between uncertainty and real activity.

V. Other Measures of Uncertainty

The results above suggest that the dynamic relationship between macro uncertainty and real activity may be quite different from the relation between financial uncertainty and real activity. However, given the composition of our macro data, macroeconomic uncertainty itself can be due to uncertainty in real activity variables such as output and unemployment, to price variables, and to financial market variables. The theoretical uncertainty literature has focused on modeling exogenous uncertainty shocks that arise specifically in measures of real economic fundamentals, rather than in prices or financial markets. To better evaluate the implications of these theoretical models and to examine robustness to alternative measures of macro or real economic uncertainty, we repeat our analysis replacing U_M with either the economic policy uncertainty (EPU) indices of Baker, Bloom, and Davis (2016)



(continued)

FIGURE 7. ECONOMIC POLICY UNCERTAINTY

(BBD), or the subindex of the macro uncertainty index U_{Mt} that fluctuates only as a result of the uncertainty in the real activity variables of the macro dataset λ^M .

A. Policy Uncertainty

BBD find that firms with greater exposure to government expenditures reduce investment and employment growth when policy uncertainty rises, suggesting that the EPU indices are well characterized as measures of real economic uncertainty. BBD compute two EPU indices, a “baseline” EPU index that has three components, and a news-only index that is a subindex and one component of the baseline EPU index. We denote these the *EPU* and *EPN* index, respectively. These indices are available from 1987:01 to 2017:06. We then repeat the analysis for two systems: $\mathbf{X}_t^{EPU} = (EPU_t, ip_t, U_{Ft})'$, and $\mathbf{X}_t^{EPN} = (EPN_t, ip_t, U_{Ft})'$.

Panel A of Figure 7 plots the *EPU* and *EPN* indices over time. We observe that the two largest spikes upward in the baseline EPU index are in and just after the debt ceiling crisis resolution, which correspond to the dates 2011:07 and 2011:08. For news index, there is an additional spike upward that rivals these in size: that for September 11, 2001. An inspection of the unconstrained set for these systems reveals that both episodes, but especially the debt ceiling crisis of 2011, were far bigger uncertainty events for policy uncertainty shocks than for either macro or financial uncertainty shocks. In other words, the debt ceiling crisis is the big shock event for policy uncertainty, akin to the 1987 crash and the Lehman collapse for

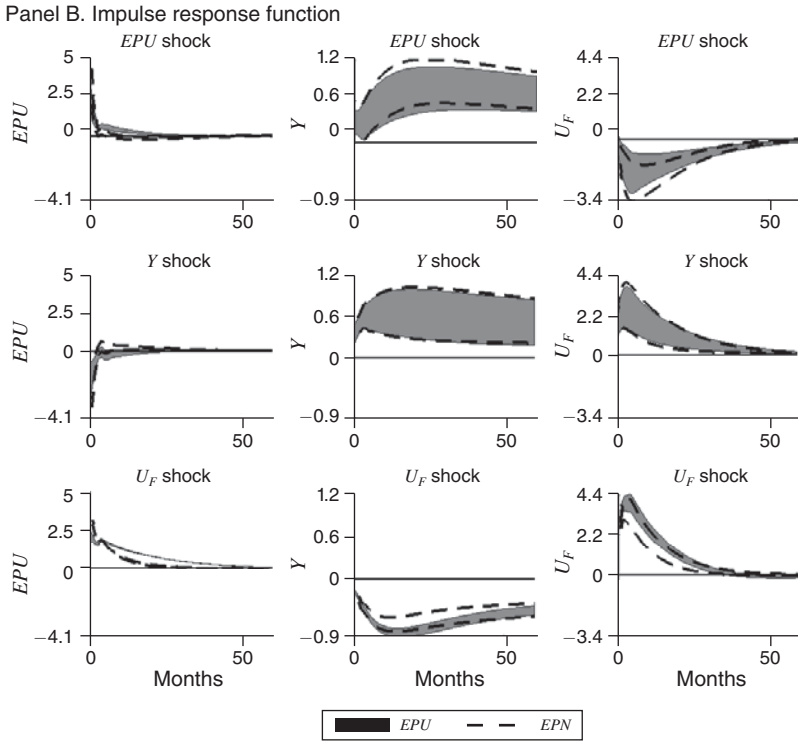


FIGURE 7. ECONOMIC POLICY UNCERTAINTY (continued)

Notes: Panel A plots the time series of baseline policy uncertainty EPU and news-based EPN , expressed in standardized units. Shaded areas correspond to NBER recession dates. The horizontal line corresponds to 1.65 standard deviations above the unconditional mean. Panel B displays impulse responses to one standard deviation shocks. Response units are reported in percentage points. Each argument of \mathbf{k} are set to their seventy-fifth percentile values of the unconstrained set. Additional identifying restriction: for EPU, $e_{EPU,t_3} \geq 2$ for all $t_3 \in \{2011:07, 2011:08\}$. The sample spans the period 1987:01 to 2015:04.

financial uncertainty. We use these events to help with identification in the policy uncertainty systems.

To facilitate comparability with the base case system, we normalize EPU_t and EPN_t to have the same mean and standard deviation as U_{Mt} . The constraints $\bar{g}_{E1}, \bar{g}_{E2}, \bar{g}_{E3}$, used above on $e_{Ft}(\mathbf{B})$ and $e_{ipf}(\mathbf{B})$ are maintained in these systems, while the external variable constraints \bar{g}_{C1} and \bar{g}_{C2} are now maintained for $e_{Ft}(\mathbf{B})$ as well as for the policy shocks $e_{EPU_t}(\mathbf{B})$ and $e_{EPN_t}(\mathbf{B})$. The parameters for these constraints are set as described above for the base case. The previous event constraints \bar{g}_{E4} (Volcker policy announcement) is not contained in the sample for this system, so it is dropped and replaced by an inequality constraint for September 11, 2001. The new event constraints for this system are parameterized as follows:

Constraint	\mathbf{X}_t^{EPU}	\mathbf{X}_t^{EPN}	τ
\bar{g}_{E4} :	—	$e_{EPN\bar{\tau}_4}(\mathbf{B}) \geq 0$	for $\bar{\tau}_4 = 2001:09$
\bar{g}_{E5} :	$e_{EPU\bar{\tau}_5}(\mathbf{B}) - 2 \geq 0$	$e_{EPN\bar{\tau}_5}(\mathbf{B}) - 2 \geq 0$	for $\bar{\tau}_5 = [2011:08, 2011:09]$

Constraint \bar{g}_{E4} requires the news uncertainty shock to merely be above average in the month of the 2001 terrorist attacks. Constraint \bar{g}_{E5} requires both types of policy shocks to be large, i.e., bounded away from zero, in the months of the debt ceiling crisis. An inspection of the unconstrained set for these systems shows that a two standard deviation policy uncertainty shock in the \mathbf{X}_t^{EPU} and \mathbf{X}_t^{EPN} systems is roughly comparable to a nonnegative macro uncertainty shock in the base case system. That is, two standard deviations corresponds to the sixty-fifth percentile value in the unconstrained set of the minimum $e_{EPN\bar{4}}(\mathbf{B})$ over the two months in the debt ceiling crisis, while zero standard deviations corresponds to same percentile value for $e_{Mt}(\mathbf{B})$ in the debt ceiling crisis in the base case system.

Panel B of Figure 7 shows the dynamic responses for the \mathbf{X}_t^{EPU} and \mathbf{X}_t^{EPN} systems. The character of the responses is similar to those for the systems based on the JLN uncertainty measures. Policy uncertainty falls sharply in response to positive production shock. Alternatively stated, negative shocks to production increase policy uncertainty sharply. These endogenous movements in policy uncertainty are more transient than those to macro uncertainty, however, and are eliminated in about two years. Financial uncertainty shocks in this system continue to be a driving force for real activity, with positive shocks driving down ip_t sharply and persistently. But there is no evidence that positive shocks to ip_t drive down financial uncertainty; in fact such shocks drive financial uncertainty persistently upward. There is no evidence based on the either system that positive policy uncertainty shocks drive down real activity; the opposite is found, with positive shocks to policy uncertainty driving up production even more persistently than in the \mathbf{X}_t system. These findings reinforce the previous results that countercyclical increases in real economic uncertainty are often well characterized as endogenous responses to declines in real activity, rather than exogenous impulses driving real activity downward, while the opposite is true for financial uncertainty. Interestingly, positive shocks to policy uncertainty drive financial uncertainty down, suggesting that markets may view times of high policy uncertainty as upside rather than downside risk.

To complete the analysis, we present variance decompositions for the \mathbf{X}_t^{EPU} system (the results for the system \mathbf{X}_t^{EPN} are similar). These results, presented in column 2 of Table 1, share some similarities with the \mathbf{X}_t system shown in the left panel, but there are at least two distinctions. First, financial uncertainty shocks that decrease real activity in both systems explain a smaller fraction of the forecast error variance in production in the \mathbf{X}_t^{EPU} system at all but the $s = 1$ forecast horizon. The ranges for these numbers at the $s = s_{\max}$ horizon across all solutions in the identified set are $[0.27, 0.39]$ in the \mathbf{X}_t^{EPU} system compared to $[0.38, 0.54]$ in the \mathbf{X}_t system. Second, compared to the \mathbf{X}_t system, greater fractions of the forecast error variance in U_{Ft} are explained by ip shocks. That is likely because positive shocks to production have more persistent effects on financial uncertainty in the \mathbf{X}_t^{EPU} system.²⁴

²⁴ It is worth noting that the results for the EPU systems are very similar even if no correlation constraints with S_t are imposed. For these systems, the event constraints alone appear to be sufficient for identifying the dynamic relationships in the system.

B. Real Activity Uncertainty

As noted, U_{Mt} can fluctuate due to uncertainty in real activity variables such as output and unemployment, or due to price variables or financial market variables. In this subsection we replace U_{Mt} with the subindex of macro uncertainty that fluctuates only as a result of the uncertainty in the 73 real activity variables of the macro dataset \mathcal{X}^M . The $h = 1$ month-ahead uncertainty in real activity variables is denoted U_{Rt} . We study the system $\mathbf{X}_t^R = (U_{Rt}, ip_t, U_{Ft})'$ using the same identifying restrictions applied above to the system with U_{Mt} .

This system is interesting because it puts the spotlight on real activity uncertainty as the source of the large macro uncertainty shock found in the unconstrained set in 1970:12. We search (now for the \mathbf{X}_t^R system) across all observations in the unconstrained set $\hat{\mathcal{B}}$ for the month in which the shock to U_{Rt} , denoted $e_R(\mathbf{B})$, is largest. Doing so for each of the 1.5 million rotations, we find that the date with the greatest number of maxima across all 1.5 million rotations (27 percent of them) is 1970:12, while the date with the second greatest is the month of the Lehman collapse, 2008:09.

Panel A of Figure 8 displays the time series plot of U_{Rt} , which, unlike U_{Mt} , exhibits a big spike upward in 1970:12. Panel B shows the identified set of IRFs for this system when the seventy-fifth percentile value of $e_R(\mathbf{B})$ in $\hat{\mathcal{B}}$ is again used to parameterize a large shock. The seventy-fifth percentile value is equal to 4.7 in 1970:12 and 4.9 in 2008:09. Although this value is smaller in 1970:12 than in 2008:08, the former episode has more extreme large shocks than latter, which explains why it is the episode with more maxima in the unconstrained set. (The ninety-ninth percentile value for $e_R(\mathbf{B})$ is 6.6 in 1970:12 compared to 6.3 in 2008:09.) The IRFs are qualitatively similar to the base case system that uses U_{Mt} , with positive financial uncertainty shocks driving down production sharply and persistently, real (but not financial) uncertainty rising sharply in response to a negative first-moment shock to production, and positive real uncertainty shocks driving up production, rather than down. The main difference from the system with U_{Mt} is that production now rises more sharply and more persistently in response to a positive real uncertainty shock than it did to a macro uncertainty shock.

VI. Conclusion

A growing body of research establishes uncertainty as a feature of deep recessions but leaves open two key questions: Is uncertainty primarily a source of business cycle fluctuations or an endogenous response to them? And does the type of uncertainty matter? The objective of this paper is to address both questions econometrically using small-scale structural VARs capable of nesting a range of theoretical possibilities.

The macro literature on uncertainty has primarily focused on real activity induced macro uncertainty as a driver of economic fluctuations. Using a novel identification approach that imposes economic assumptions on the behavior of the shocks, we find from a variety of parameterizations and specifications that macro uncertainty rises endogenously in response to real activity shocks, contributing strongly to its

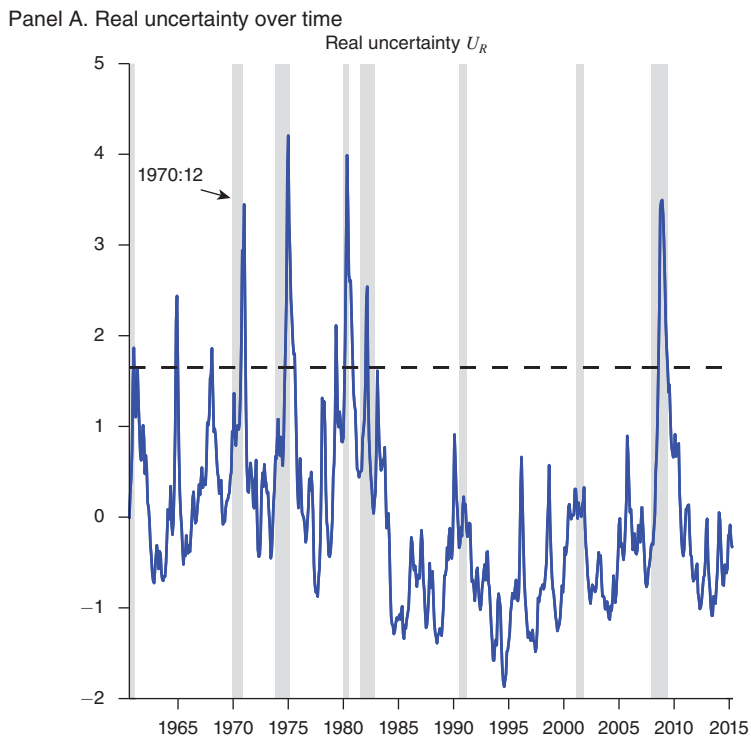
*(continued)*

FIGURE 8. REAL ACTIVITY UNCERTAINTY

countercyclical behavior. It is shocks to financial uncertainty, rather than macro uncertainty, that are found to be a driver of economic fluctuations. An implication of these findings is that dynamic equilibrium models should allow for broad-based macro uncertainty to respond endogenously to a variety of shocks, while entertaining the notion that occasional large shocks to uncertainty originating in financial markets may be a source of deep recessions.

Our findings call for a need to better understand how uncertainty in financial markets is transmitted to the macroeconomy, and why the two types of uncertainty have a distinct relationship with economic activity. A burgeoning business cycle literature has begun to postulate theoretical linkages between financial market uncertainty, real/macro uncertainty, and real activity.²⁵ Although these models are currently too stylized to be confronted with actual data, they appear capable of generating implications that are consistent at least qualitatively with our finding that positive shocks to financial uncertainty are a driving force of declines in productive

²⁵For example, Benhabib, Liu, and Wang (2017) study self-fulfilling surges in financial and real uncertainty in a model of informational interdependence and mutual learning; Adrian and Boyarchenko (2012), Brunnermeier and Sannikov (2014), and He and Krishnamurthy (2012) study production economies with financial intermediaries that give rise to time-varying GDP vulnerabilities (downside real risk) as a function of time-varying financial frictions; hence, financial uncertainty drives both GDP and its volatility.

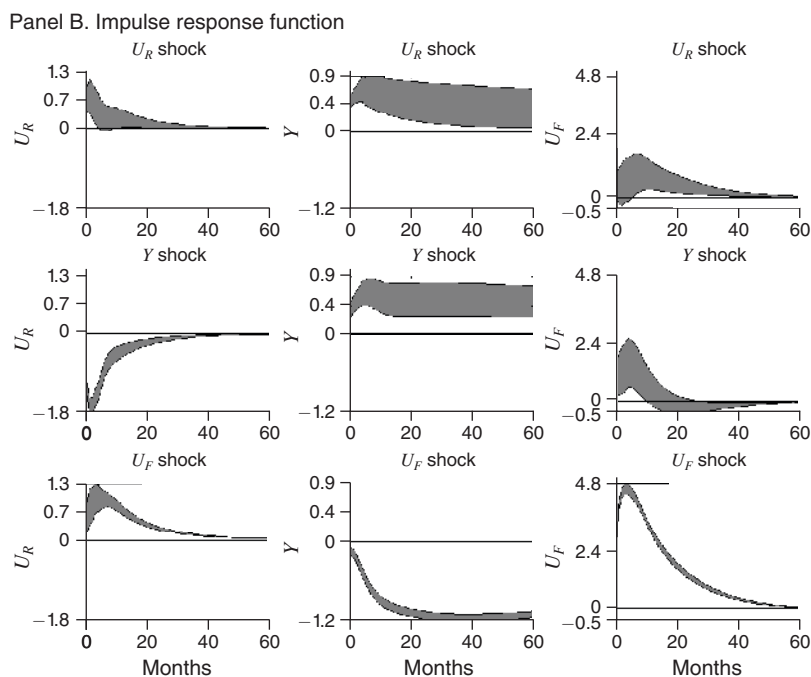


FIGURE 8. REAL ACTIVITY UNCERTAINTY (continued)

Notes: The figure shows results from the identified set for system $\mathbf{X}_t^R = (U_{Rt}, ip_t, U_{Ft})'$, using the full set of constraints with each argument of $\bar{\mathbf{k}}$ set to their seventy-fifth percentile values of the unconstrained set. Panel A plots the time series of real uncertainty, expressed in standardized units. Shaded areas correspond to NBER recession dates. The horizontal line corresponds to 1.65 standard deviations above the unconditional mean. Panel B displays impulse responses to one standard deviation shocks. Response units are reported in percentage points. The sample spans the period 1960:07 to 2015:04.

activity, while real uncertainty responds endogenously to first-moment shocks to productive activity.

REFERENCES

- Abel, Andrew B. 1983. "Optimal Investment under Uncertainty." *American Economic Review* 73 (1): 228–33.
- Adrian, Tobias, and Nina Boyarchenko. 2012. "Intermediary Leverage Cycles and Financial Stability." Federal Reserve Bank of New York Staff Report 567.
- Ai, Hengjie, Kai Li, and Fang Yang. 2015. "Financial Intermediation and Capital Misallocation." <https://carlsonschool.umn.edu/sites/carlsonschool.umn.edu/files/inline-files/Paper%20202.pdf>.
- Andrews, Donald W.K., and Gustavo Soares. 2010. "Inference for Parameters Defined by Moment Inequalities Using Generalized Moment Selection." *Econometrica* 78 (1): 119–57.
- Angelini, Giovanni, Emanuele Bacchiocchi, Giovanni Caggiano, and Luca Fanelli. 2019. "Uncertainty across Volatility Regimes." *Journal of Applied Econometrics* 34 (3): 437–55.
- Antolín-Díaz, Juan, and Juan F. Rubio-Ramírez. 2018. "Narrative Sign Restrictions for SVARs." *American Economic Review* 108 (10): 2802–29.
- Arellano, Cristina, Yan Bai, and Patrick Kehoe. 2011. "Financial Markets and Fluctuations in Uncertainty." <http://papers.economics.ubc.ca/legacypapers/bai.pdf>.
- Bachmann, Rüdiger, Steffen Elstner, and Eric R. Sims. 2013. "Uncertainty and Economic Activity: Evidence from Business Survey Data." *American Economic Journal: Macroeconomics* 5 (2): 217–49.

- Bachmann, Ruediger, and Giuseppe Moscarini.** 2011. "Business Cycles and Endogenous Uncertainty." *Society for Economic Dynamics* 36: 82–99.
- Baker, Scott R., and Nicholas Bloom.** 2013. "Does Uncertainty Reduce Growth? Using Disasters as Natural Experiments." NBER Working Paper 19475.
- Baker, Scott R., Nicholas Bloom, and Steven J. Davis.** 2016. "Measuring Economic Policy Uncertainty." *Quarterly Journal of Economics* 131 (4): 1593–1636.
- Bar-Ilan, Avner, and William C. Strange.** 1996. "Investment Lags." *American Economic Review* 86 (3): 610–22.
- Basu, Susanto, and Brent Bundick.** 2017. "Uncertainty Shocks in a Model of Effective Demand." *Econometrica* 85 (3): 937–58.
- Baumeister, Christiane, and James D. Hamilton.** 2015. "Sign Restrictions, Structural Vector Autoregressions, and Useful Prior Information." *Econometrica* 83 (5): 1963–99.
- Bekaert, Geert, Marie Hoerova, and Marco Lo Duca.** 2013. "Risk, Uncertainty, and Monetary Policy." *Journal of Monetary Economics* 60 (7): 771–88.
- Benhabib, Jess, Xuewen Liu, and Pengfei Wang.** 2017. "Financial Markets, the Real Economy, and Self-Fulfilling Uncertainties." <https://whartonliquidity.files.wordpress.com/2017/10/benhabib-liu-and-wang-2017-1.pdf>.
- Berger, David, Ian Dew-Becker, and Stefano Giglio.** 2016. "Contractionary Volatility or Volatile Contractions?" <https://wp Carey.asu.edu/sites/default/files/iandew-beckerseminarsept22016.pdf>.
- Bernanke, Ben S.** 1983. "Irreversibility, Uncertainty, and Cyclical Investment." *Quarterly Journal of Economics* 98 (1): 85–106.
- Bloom, Nicholas.** 2009. "The Impact of Uncertainty Shocks." *Econometrica* 77 (3): 623–85.
- Bloom, Nicholas.** 2014. "Fluctuations in Uncertainty." *Journal of Economic Perspectives* 28 (2): 153–75.
- Bloom, Nicholas, Max Floetotto, Nir Jaimovich, Itay Saporta-Eksten, and Stephen J. Terry.** 2018. "Really Uncertain Business Cycles." *Econometrica* 86 (3): 1031–65.
- Bollerslev, Tim, George Tauchen, and Hao Zhou.** 2009. "Expected Stock Returns and Variance Risk Premia." *Review of Financial Studies* 22 (11): 4463–92.
- Brunnermeier, Markus, and Yuliy Sannikov.** 2014. "A Macroeconomic Model with a Financial Sector." *American Economic Review* 104 (2): 379–421.
- Campbell, John Y., Stefano Giglio, Christopher Polk, and Robert Turley.** 2018. "An Intertemporal CAPM with Stochastic Volatility." *Journal of Financial Economics* 128 (2): 207–33.
- Campbell, John Y., and Ludger Hentschel.** 1992. "No News Is Good News: An Asymmetric Model of Changing Volatility in Stock Returns." *Journal of Financial Economics* 31 (3): 281–318.
- Carriero, Andrea, Todd E. Clark, and Massimiliano Marcellino.** 2018. "Endogenous Uncertainty." Federal Reserve Bank of Cleveland Working Paper 18-05.
- Engle, Robert F, and Victor K. Ng.** 1993. "Measuring and Testing the Impact of News on Volatility." *Journal of Finance* 48 (5): 1749–78.
- Fajgelbaum, Pablo D., Edouard Schaal, and Mathieu Taschereau-Dumouchel.** 2017. "Uncertainty Traps." *Quarterly Journal of Economics* 132 (4): 1641–92.
- Favilukis, Jack, Sydney C. Ludvigson, and Stijn Van Nieuwerburgh.** 2017. "The Macroeconomic Effects of Housing Wealth, Housing Finance, and Limited Risk Sharing in General Equilibrium." *Journal of Political Economy* 125 (1): 140–223.
- Fernández-Villaverde, Jesús, Pablo Guerrón-Quintana, Juan F. Rubio-Ramírez, and Martin Uribe.** 2011. "Risk Matters: The Real Effects of Volatility Shocks." *American Economic Review* 101 (6): 2530–61.
- Fostel, Ana, and John Geanakoplos.** 2012. "Why Does Bad News Increase Volatility and Decrease Leverage?" *Journal of Economic Theory* 147 (2): 501–25.
- French, Kenneth R., G. William Schwert, and Robert F. Stambaugh.** 1987. "Expected Stock Returns and Volatility." *Journal of Financial Economics* 19 (1): 3–29.
- Gertler, Mark, and Peter Karadi.** 2015. "Monetary Policy Surprises, Credit Costs, and Economic Activity." *American Economic Journal: Macroeconomics* 7 (1): 44–76.
- Gilchrist, Simon, Jae W. Sim, and Egon Zakrajsek.** 2010. "Uncertainty, Financial Frictions, and Investment Dynamics." Society for Economic Dynamics 2010 Meeting Papers 1285.
- Glaeser, Edward L., Tano Santos, and E. Glen Weyl.** 2017. *After the Flood: How the Great Recession Changed Economic Thought*. Chicago: University of Chicago Press.
- Gomes, Joao F., and Lukas Schmid.** 2017. "Equilibrium Asset Pricing with Leverage and Default." <https://faculty.wharton.upenn.edu/wp-content/uploads/2016/03/JF-Submission.pdf>.
- Hartman, Richard.** 1972. "The Effects of Price and Cost Uncertainty on Investment." *Journal of Economic Theory* 5 (2): 258–66.

- He, Zhiguo, and Arvind Krishnamurthy.** 2012. "A Model of Capital and Crises." *Review of Economic Studies* 79 (2): 735–77.
- Ilut, Cosmin L., and Hikaru Saijo.** 2016. "Learning, Confidence, and Business Cycles." NBER Working Paper 22958.
- Jurado, Kyle, Sydney C. Ludvigson, and Serena Ng.** 2015. "Measuring Uncertainty." *American Economic Review* 105 (3): 1117–1216.
- Kraft, Holger, Eduardo Schwartz, and Farina Weiss.** 2018. "Growth Options and Firm Valuation." *European Financial Management* 24 (2): 209–38.
- Leduc, Sylvain, and Zheng Liu.** 2016. "Uncertainty Shocks Are Aggregate Demand Shocks." *Journal of Monetary Economics* 82: 20–35.
- Lettau, Martin, Sydney Ludvigson, and Charles Steindel.** 2002. "Monetary Policy Transmission through the Consumption-Wealth Channel." *Federal Reserve Bank of New York Economic Policy Review* 8 (1): 117–33.
- Lintner, John.** 1965. "Security Prices, Risk, and Maximal Gains from Diversification." *Journal of Finance* 20 (4): 587–615.
- Ludvigson, Sydney C., Sai Ma, and Serena Ng.** 2020. "Shock Restricted Structural Vector-Autoregressions." <http://www.columbia.edu/~sn2294/papers/lmn2.pdf>.
- Ludvigson, Sydney C., Sai Ma, and Serena Ng.** 2021. "Replication data for: Uncertainty and Business Cycles: Exogenous Impulse or Endogenous Response?" American Economic Association [publisher], Inter-university Consortium for Political and Social Research [distributor]. <https://doi.org/10.3886/E110803V1>.
- Ludvigson, Sydney C., and Serena Ng.** 2007. "The Empirical Risk-Return Relation: A Factor Analysis Approach." *Journal of Financial Economics* 83 (1): 171–222.
- McCracken, Michael W., and Serena Ng.** 2016. "FRED-MD: A Monthly Database for Macroeconomic Research." *Journal of Business and Economic Statistics* 34 (4): 574–89.
- McDonald, Robert, and Daniel Siegel.** 1986. "The Value of Waiting to Invest." *Quarterly Journal of Economics* 101 (4): 707–28.
- Mertens, Karel, and Morten O. Ravn.** 2013. "The Dynamic Effects of Personal and Corporate Income Tax Changes in the United States." *American Economic Review* 103 (4): 1212–47.
- Mertens, Karel, and Morten O. Ravn.** 2014. "A Reconciliation of SVAR and Narrative Estimates of Tax Multipliers." *Journal of Monetary Economics* 68 (S): S1–S19.
- Nakamura, Emi, Dmitriy Sergeyev, and Jón Steinsson.** 2017. "Growth-Rate and Uncertainty Shocks in Consumption: Cross-Country Evidence." *American Economic Journal: Macroeconomics* 9 (1): 1–39.
- Nelson, Daniel B.** 1991. "Conditional Heteroskedasticity in Asset Returns: A New Approach." *Econometrica* 59 (2): 347–70.
- Ng, Serena, and Jonathan H. Wright.** 2013. "Facts and Challenges from the Great Recession for Forecasting and Macroeconomic Modeling." *Journal of Economic Literature* 51 (4): 1120–54.
- Oi, Walter Y.** 1961. "The Desirability of Price Instability under Perfect Competition." *Econometrica* 29 (1): 58–64.
- Pástor, Luboš, and Pietro Veronesi.** 2006. "Was There a Nasdaq Bubble in the Late 1990s?" *Journal of Financial Economics* 81 (1): 61–100.
- Pástor, Luboš, and Pietro Veronesi.** 2013. "Political Uncertainty and Risk Premia." *Journal of Financial Economics* 110 (3): 520–45.
- Piffer, Michele, and Maximilian Podstawski.** 2017. "Identifying Uncertainty Shocks Using the Price of Gold." *Economic Journal* 128 (616): 3266–84.
- Ramey, Valerie A.** 2016. "Chapter 2—Macroeconomic Shocks and Their Propagation." In *Handbook of Macroeconomics*, Vol. 2, edited by John B. Taylor and Harald Uhlig, 71–162. Amsterdam: North-Holland.
- Rubio-Ramírez, Juan F., Daniel F. Waggoner, and Tao Zha.** 2010. "Structural Vector Autoregressions: Theory of Identification and Algorithms for Inference." *Review of Economic Studies* 77 (2): 665–96.
- Schwert, G. William.** 1989. "Why Does Stock Market Volatility Change over Time." *Journal of Finance* 44 (5): 1115–53.
- Segal, Gill, Ivan Shaliastovich, and Amir Yaron.** 2015. "Good and Bad Uncertainty: Macroeconomic and Financial Market Implications." *Journal of Financial Economics* 117 (2): 369–97.
- Sharpe, William F.** 1964. "Capital Asset Prices: A Theory of Market Equilibrium under Conditions of Risk." *Journal of Finance* 19 (3): 425–44.

- Stock, James H., and Mark W. Watson.** 2008. "NBER Summer Institute Mini-course 2008: What's New in Econometrics: Time Series, Lecture 7: Structural VARs." Cambridge, MA: National Institute for Economic Research. www.nber.org/minicourse_2008.html.
- Stock, James H., and Mark W. Watson.** 2012. "Disentangling the Channels of the 2007–09 Recession." *Brookings Papers on Economic Activity* 42 (1): 81–156.
- Van Nieuwerburgh, Stijn, and Laura Veldkamp.** 2006. "Learning Asymmetries in Real Business Cycles." *Journal of Monetary Economics* 53 (4): 753–72.
- Whaley, Robert E.** 2000. "The Investor Fear Gauge." *Journal of Portfolio Management* 26 (3): 12–17.