



Pattern Collection: Accessories



Going Places Shawl

Designed by Universal Yarn Design Team

FINISHED MEASUREMENTS

Depth in Center: 31"

Wingspan: 62"

MATERIALS

Universal Yarn *Universe* (42% linen, 41% combed cotton, 9% glitter, 8% polyamide; 50g/246 yds)

- 10-10 Tin – 4 balls

Needles: US Size 5 (3.75 mm) 32" circular *or size needed to obtain gauge*

Notions: Stitch markers, tapestry needle, cable needle (cn)

GAUGE

16 sts x 26 rows = 4" in St st

Save time, check your gauge.

Knit, Relax, Smile, Repeat!

2015 © Universal Yarn, Inc.

All rights reserved.

www.universalyarn.com

This pattern may not be reproduced for business, trade or sale.

PATTERN NOTES

This shawl is worked from the top down.

The edging is worked as a knit-on edge. It is joined to the shawl body at the beginning of every WS row by knitting a stitch from the shawl body together with a stitch from the edging.

STITCH GUIDE

2x1 LC: Slip next 2 sts to cn and hold in front, k1 from left ndl, k2 from cn.

2x1 RC: Slip next st to cn and hold in back, k2 from left ndl, k1 from cn.

SHAWL BODY

Starting Tab

Cast on 4 sts. Knit 10 rows.

Next row (RS): K4, rotate work 90 degrees, pick up and knit 8 sts from side of Tab, pick up and knit 4 sts – 16 sts.

Next row (WS): P5, pm, p6, pm, p5.

Work Rows 1-32 of Shawl Body chart, then rep Rows 17-32, 8 more times – 336 sts.

Edging

Cast on 7 sts to dpn. Work Rows 1-12 of Edging chart, 56 times – all Shawl Body sts have been worked. Bind off rem Edging sts.

FINISHING

Weave in ends. Wet block shawl tightly, using blocking wires for upper edge of Shawl and pinning out points from Edging.

Abbreviations

| | |
|----------------|---------------------------------------|
| beg | begin(ning) |
| bet | between |
| circ | circular |
| cn | cable needle |
| cont | continue |
| dec('d) | decrease(d) |
| inc('d) | increase(d) |
| k | knit |
| k2tog | knit 2 stitches together (1 st dec'd) |
| LH | left hand |
| m | marker |
| meas | measures |
| ndl | needle |
| patt | pattern |

| | |
|--------------|---|
| p | purl |
| pfb | purl into the front and back of next st (1 st inc'd) |
| pm | place marker |
| pssso | pass slipped stitch(es) over |
| pwise | purlwise |
| rem | remain(ing) |
| rep | repeat |
| RH | right hand |
| RS | right side |
| ssk | slip next 2 sts individually knitwise, slip them back to left needle in this position, knit them together through the back loops (1 st dec'd) |
| st(s) | stitch(es) |
| St st | Stockinette stitch (knit on RS rows, purl on WS rows; in the rnd, knit every rnd) |
| tbl | through the back loop(s) |
| tog | together |
| WS | wrong side |
| wyib | with yarn held in back |
| yo | yarn over |

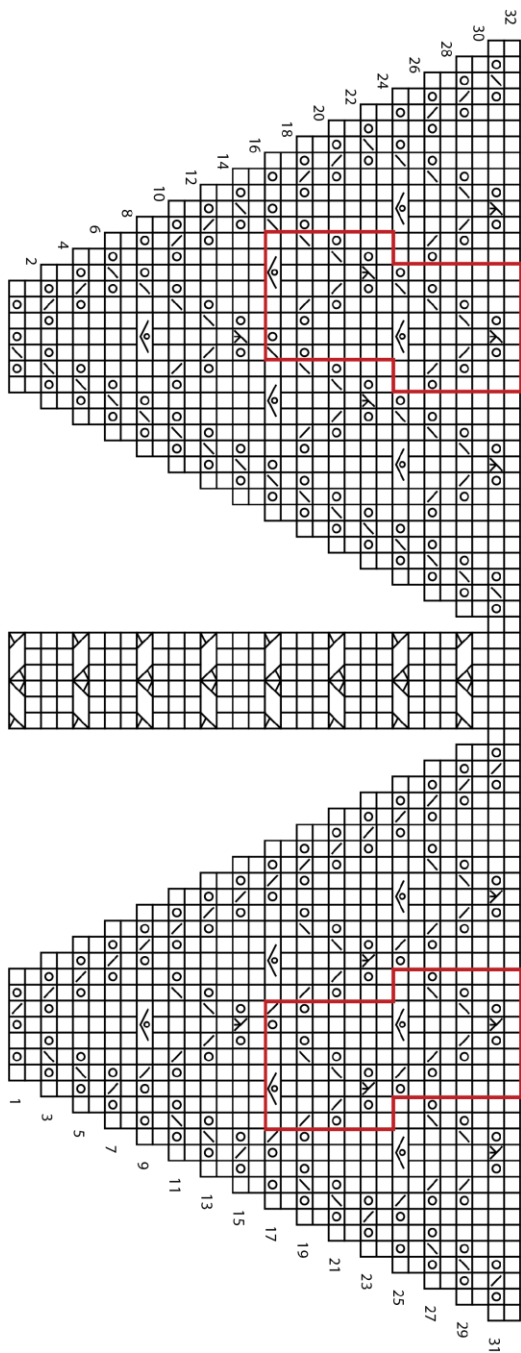
Knit, Relax, Smile, Repeat!

2015 © Universal Yarn, Inc.

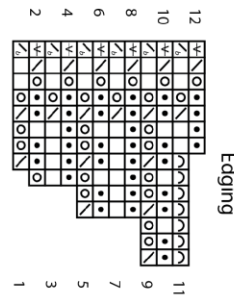
All rights reserved.

www.universalyarn.com

This pattern may not be reproduced for business, trade or sale.



Shawl Body



Edging

- Key**
- knit on RS, purl on WS
 - purl on RS, knit on WS
 - yarn over
 - K2tog on RS or WS
 - ssk
 - K3tog
 - sssk
 - [K3tog, yo, knit the same 3 sts tog] over next 3 sts
 - 2x1 LC
 - 2x1 RC
 - sl 1 pwise with yarn to the RS
 - K2tog tbl (edging st with shawl st)
 - bind off 1 st
 - patt rep

Knit, Relax, Smile, Repeat!

2015 © Universal Yarn, Inc.

All rights reserved.

www.universalyarn.com

This pattern may not be reproduced for business, trade or sale.