

4 Placement and Final Adjustments

1. In Photoshop, open the **Destination Image** file.
2. From the **Edit** menu, select **Paste**. (Shortcut: Ctrl+P)



3. From the **Edit** menu, select **Transform**. (Shortcut: Ctrl +T)
4. Use the Transform frame to adjust the facial image.
 - Scale the facial features to a size that matches the Destination Image.
 - Rotate the facial features to align with the existing body structure.
 - Re-position the facial features to create a seamless illustration.



5. The illustration is complete. From the **File** menu, select **Save**.



Adobe Photoshop Face Replacement



Course Description

Face Replacement is a common photo manipulation performed in Adobe Photoshop. This course will teach the basics of Face Replacements including image selection, facial isolation, and final adjustments.

For additional examples of Face Replacements, visit these popular websites:

[Yearbook Yourself](#)

[JibJab](#)

[Face in Hole](#)

1 Destination Image Selection

The **Destination Image** contains most of the visual content of the final illustration. The Destination Image can also be thought of as the background image.

Popular destination image types:

- Celebrities
- Movie Posters
- Popular Art

Common image sources:

- iStockPhoto
- stock.xchang
- Goggle Image Search

In-Class Example:



2 Source Image Selection

The **Source Image** contains the facial features of the final illustration. To make the manipulation more seamless it is important to consider:

Do facial displays match?

- Profile vs. Head shot

Are there any facial obstructions?

- Shadows
- Glasses
- Wild bangs/Rocker hair

Do both images have similar color profiles?

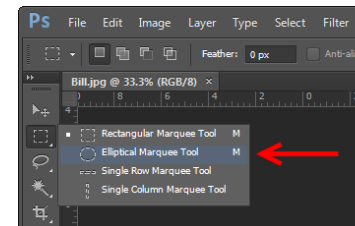
In-Class Example:



3 Facial Isolation

1. In Photoshop, open the **Source Image** file.

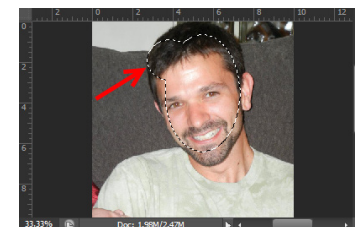
2. From the toolbox, select the **Elliptical Marquee Tool**.



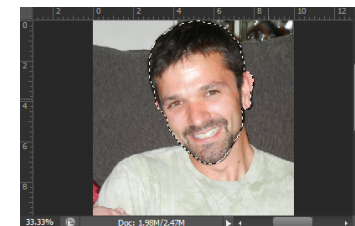
3. Click and drag to make the initial selection.



4. Press and hold the **SHIFT** key, then click and drag to expand the selection area.



5. Repeat step 4 until the needed facial area is selected.



6. From the **Edit** menu, select **Copy**. (Shortcut: Ctrl+C)



Before You Continue...

There are multiple ways to complete tasks in Photoshop. In this course, the **Elliptical Marquee** tool is used to select the facial features of the Source Image. As you become more familiar with other Photoshop tools, try isolating facial features by using the Background Eraser tool or creating a Clipping Mask.