

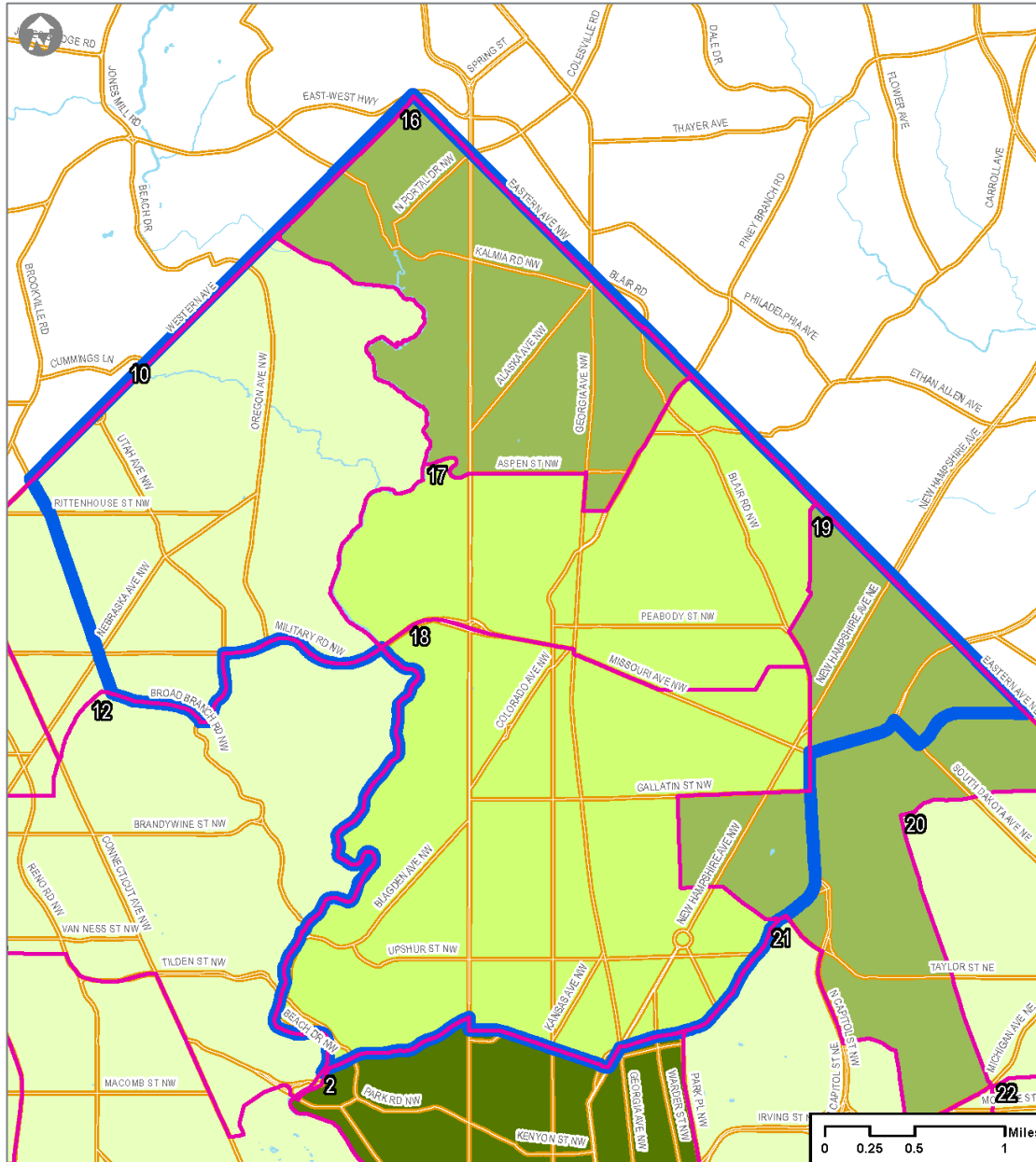
Vulnerability in One or More Domains

Ward 4


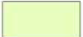



Neighborhoods: Percentage Vulnerable on One or More Domains

ID	Neighborhood	%
1	Cluster 1	18%
2	Cluster 2	34%
3	Cluster 3	14%
4	Cluster 4**	11%
5	Cluster 5	16%
6	Cluster 6	5%
7	Cluster 7	35%
8	Cluster 8	36%
9	Cluster 9	29%
10	Cluster 10	7%
11	Cluster 11**	14%
12	Cluster 12	13%
13	Cluster 13	14%
14	Cluster 14	10%
15	Cluster 15**	6%
16	Cluster 16	32%
17	Cluster 17	20%
18	Cluster 18	24%
19	Cluster 19	30%
20	Cluster 20	18%
21	Cluster 21	19%
22	Cluster 22	17%
23	Cluster 23	34%
24	Cluster 24	22%
25	Cluster 25	20%
26	Cluster 26	11%
27	Cluster 27	26%
28	Cluster 28	36%
29	Cluster 29	37%
30	Cluster 30	29%
31	Cluster 31	33%
32	Cluster 32	38%
33	Cluster 33	24%
34	Cluster 34	28%
35	Cluster 35	17%
36	Cluster 36	36%
37	Cluster 37	28%
38	Cluster 38	30%
39	Cluster 39	34%
	Neighborhood-wide	26%

** EDI participation rate is below the recommended threshold; interpret results with caution.



Legend

-  Neighborhood Boundary
- Proportion of Children Developmentally Vulnerable**
-  Lowest Proportion
-  Highest Proportion
-  No or Few Data
-  Ward Boundary

Updated January 2018

Data courtesy of:



Data compiled by:

