

Light breaks

For Music Box, Recorders, Toy Piano, Melodica, Glockenspiel, Triangle, Splash Cymbal, Autoharp, & iPad
(5 performers)

by David Alan Broome
(05.30.2016)

commissioned by Gail Glister for her grandson, Dylan James Hague

Light breaks is named after the poem by Dylan Thomas called

Light breaks where no sun shines

-
- | | | | | |
|--|---|--|---|---|
| 1. Light breaks where no sun shines; Where no sea runs, the waters of the heart Push in their tides; And, broken ghosts with glow-worms in their heads, The things of light File through the flesh where no flesh decks the bones. | 2. A candle in the thighs Warms youth and seed and burns the seeds of age; Where no seed stirs, The fruit of man unwrinkles in the stars, Bright as a fig; Where no wax is, the candle shows its hairs. | 3. Dawn breaks behind the eyes; From poles of skull and toe the windy blood Slides like a sea; Nor fenced, nor staked, the gushers of the sky Spout to the rod Divining in a smile the oil of tears. | 4. Night in the sockets rounds, Like some pitch moon, the limit of the globes; Day lights the bone; Where no cold is, the skinning gales unpin The winter's robes; The film of spring is hanging from the lids. | 5. Light breaks on secret lots, On tips of thought where thoughts smell in the rain; When logics dies, The secret of the soil grows through the eye, And blood jumps in the sun; Above the waste allotments the dawn halts. |
|--|---|--|---|---|

Light breaks

Performance Notes

Performer 1

MUSIC BOX, 2 RECORDERS & SPLASH

MUSIC BOX

The Music Box is a 30 note hand cranked device that functions very much like a player piano. See the following link for information regarding the Music Box as well as the paper that feeds the Music Box.

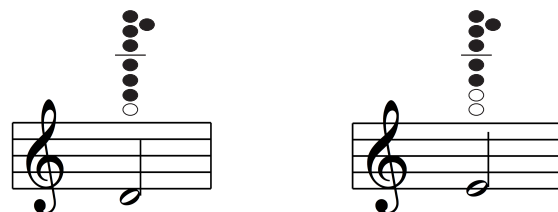
<http://www.grand-illusions.com/acatalog/30-Note-Music-Box-Set-554.html>

A PDF (not printable - too long) is provided in the score as a guide for punching your own holes. The performer scrolls through the paper with the music box aligned with the rhythms notated in the score. The actual pitches in the score are only used as a reference points for the performer.

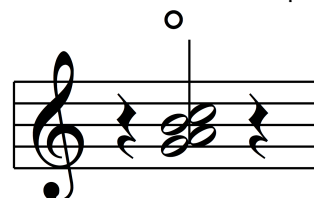
RECORDERS

2 soprano recorders (in C) are mounted next to each other so that the performer can play the music box and blow into the recorders at the same time using both hands for the music box.

Specific holes of the recorder should be taped so that the performer doesn't have to use their fingers to make the appropriate notes sound.



A little circle above the notes of the music box part marks when the recorders should be played and they should be played for the duration of the notes written in the music box part.



Performer 1

(continued)

SPLASH

A splash cymbal is shared by Performer 1 and Performer 4. It is notated on a separate staff indicated by either M.B (music box) or A.H. (autoharp). The following instructions notate how the cymbal should be played:



Struck normally



Struck at the bell



bowed

Performer 2

TOY PIANO & MELODICA

TOY PIANO

The Toy Piano should have a range of:



MELODICA

The Melodica should have a range of:



Performer 3

GLOCKENSPIEL & TRIANGLE

GLOCKENSPIEL

The Toy Glockenspiel (or Real Glockenspiel if you're so lucky) should have a range of:



TRIANGLE

Just pick a triangle that sounds nice.



Performer 4

AUTOHARP & SPLASH

The part was written for a 21 chord autoharp.

Special notation and performance notes:

loco

"in place" - strum from bottom to top with the finger nail or plectrum to the left of the chord buttons

F.N.

play with finger nail or plectrum

F.T.

play with finger tip

play near the bridge to the right of the chord buttons, when there is no bracket, play to the left of the chord buttons

strum from top to bottom

arco

bowed

There is no muting in this piece, let all notes vibrate.

SPLASH

A splash cymbal is shared by Performer 1 and Performer 4. See Performer 1 [SPLASH](#) instructions for more details.

Performer 5

IPAD - BEBOT

Bebot is a smartphone app. For this piece, it works best to be played on an iPad or another large screen surface. For this piece, I use 2 different settings:

Preset 1 - LOW

- Synth Controls
 - Synth Mode: Sawtooth @ 0
 - Sub Mode: Sine - 1 @ 50%
- Effects
 - Echo: effects low and unnoticeable
 - Overdrive: Overdrive 0 & Wet/Drive Full
 - Chorus: Wet/Dry @ 0
 - the other settings are up to you
- Scale Settings
 - Pitch: the range should clearly show the lowest F to the 2nd lowest C
 - Zoom: All the Way up
 - Autotune Mode: Slow
 - All the Keys showing on Root

4. Note Grid: ON

5. Hotkeys: OFF

Preset 2 - HIGH

- Synth Controls
 - Synth Mode: Sawtooth @ 0 Timbre
 - Sub Mode: Sine - 1 @ Full Osc/Sub Mix
- Effects: none
- Scale Settings
 - Pitch and Zoom all the way baby
 - Autotune Mode: OFF
 - All the Keys showing on Root

4. Note Grid: ON

5. Hotkeys: OFF

Light breaks

Toy Piano
Toy Glock
Music Box
A.H. Splash
Bebot

♩ = 90

7

8

17

18

Toy Piano: Melodic line with various articulations and dynamics. Includes a 'Preset 2' label.

Toy Glock: Rhythmic accompaniment with various note values and rests.

Music Box: Steady accompaniment with various note values and rests.

A.H. Splash: Percussive accompaniment with various note values and rests.

Bebot: Melodic line with various articulations and dynamics.

29

Toy Piano

Melodica

Toy Glock

Music Box

A.H. Splash

Bebot

two fingers, one note. one finger goes up 1/4 step while the other remains.

40

Toy Piano

Toy Glock

Music Box

M.B. Splash

Auto Harp

Bebot

G

Am

Dm

Am

D

G

Cm

loco

loco

F.T.

Preset 1

mp

p

52

Toy Piano

Toy Glock

Music Box

M.B. Splash

Auto Harp

Bebot

Cm

G

loco

F.N.

Dm

p

mf

ff

65

Toy Piano

Melodica

Toy Glock

Music Box

M.B. Splash

Auto Harp

3:5

4:5

p

Bm

C

Dm

G

G

Cm

F.T.

loco

705

Toy Piano

Toy Glock

Music Box

A.H. Splash

Auto Harp

Bebot

715

Toy Piano

Melodica

Toy Glock

Music Box

M.B. Splash

Auto Harp

Bebot

730

Toy Piano

Melodica

Toy Glock

Music Box

Auto Harp

Bebot

G

Am

Am/E

Am

Am/E

Am

Am/E

loco

loco

loco

Preset 2

741

Toy Piano

Melodica

Toy Glock

Music Box

Auto Harp

Bebot

F

A

Am

A

Am

A

Am

arco

sloooooow slide ↓

Light breaks

Performer 1

Music Box

Music Box

Music Box

Music Box

Music Box

Music Box

M.B. Splash

Music Box

M.B. Splash

Music Box

Music Box

M.B. Splash

Music Box

M.B. Splash

Music Box

Music Box

Music Box

Music Box

Music Box

Music Box

M.B. Splash

Music Box

Music Box

Music Box

Music Box

Light breaks

1

Performer 2

Toy Piano

Melodica

Tempo: ♩ = 90

7 9 18 23 25 30 34 43 57 67 75

p

3:5

2

Toy Piano

Melodica

83 89 96 103 109 114 123 131 138 143 151

4:3 4:3 4:3 4:3 4:5

rit. *a tempo*

Light breaks

1

Performer 3

Toy Glock

Toy Glock

Toy Glock

Toy Glock

Toy Glock

Toy Glock

Toy Glock

Toy Glock

Toy Glock

2

Toy Glock

Toy Glock

Toy Glock

Toy Glock

Toy Glock

Toy Glock

Toy Glock

Toy Glock

Toy Glock

Toy Glock

Toy Glock

Light breaks

1

Performer 4

A.H. Splash

A.H. Splash

A.H. Splash

A.H. Splash

A.H. Splash

Auto Harp

Auto Harp

Auto Harp

Auto Harp

Auto Harp

A.H. Splash

Auto Harp

2

A.H. Splash

Auto Harp

A.H. Splash

Auto Harp

A.H. Splash

Auto Harp

Auto Harp

Auto Harp

Auto Harp

Auto Harp

Auto Harp

