

Name: _____

Date: _____



Week 10 - Bristle Bots!

Materials:	Amount:
Tooth Brush Heads	1
Button Batteries	1
Vibrating pager motor	1
Double-sided tape	1 roll
Football	1
String	3 feet
Hot Wheel Tracks	(optional)

Procedure:

1. Cut off toothbrush head
2. Tape one terminal of the motor to the base of the button battery
3. Using 1/3" piece of tape, tape the motor to the back side of the tooth brush head (the motor head should hang off the top!)
4. Bend the other terminal of the motor to touch the top of the battery
5. Watch the bristle bot go!

Vocab:

Circuit: A complete and closed path for electric current to flow through.

Load: Any component of a **circuit** that uses the energy and has some resistance.

Question 1: Circle the answer:

What kind of **energy** do batteries store in them?

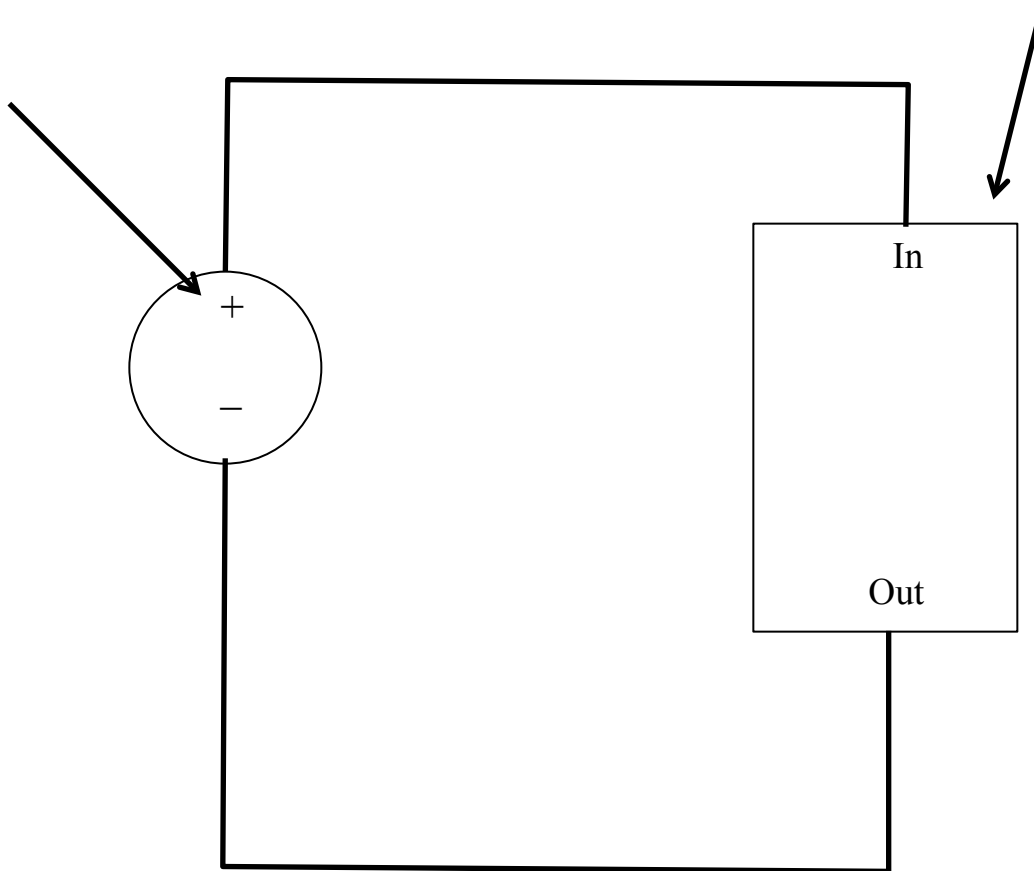
Potential Energy

Kinetic Energy

Question 2: Fill in the blanks with the correct type of energy:

Motors convert _____ energy into _____ energy.

Question 3: Label the parts of the bristle bot circuit!



Bonus Question:

In a car, what type of energy would the fuel have? (Kinetic or Potential?)

