

STOPPING THE EBOLA EPIDEMIC REQUIRES A RAPID GLOBAL RESPONSE AIMED AT SAFEGUARDING AT-RISK COMMUNITIES.

**25,000+**  
PEOPLE AFFECTED

THE ISSUE

**LARGEST OUTBREAK OF EBOLA IN HISTORY**



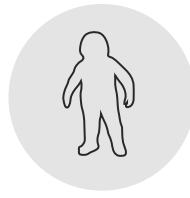
SINCE DECEMBER 2013, GUINEA, LIBERIA, & SIERRA LEONE HAVE REPORTED THOUSANDS SUSPECTED AND CONFIRMED CASES.

IDENTIFYING THE RESPONSE GAPS



**INFORMATION COMMUNICATION TECHNOLOGY**

Limited communications capacity across the community, government and health care workers



**PERSONAL PROTECTIVE EQUIPMENT**

Uncomfortable and difficult to use health care worker protective gear



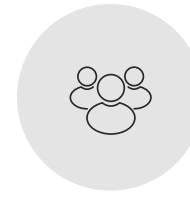
**CARE SETTING & DECONTAMINATION**

Void of rapidly deployable Ebola treatment units that provide comfortable working conditions for health care workers



**HEALTH CARE WORKER TOOLS**

Simplification and safeguarding of patient care and health care worker safety



**BEHAVIOR CHANGE**

Community education and mobilization

INNOVATIONS TO FILL THE GAPS

A GLOBAL RESPONSE →

**1,500+**

IDEAS SUBMITTED TO THE FIGHTING EBOLA GRAND CHALLENGE

**PERSONAL PROTECTIVE EQUIPMENT**



**Health Care Worker Suit**

Allowing for faster and more efficient doffing or removal. Health care workers will be able to remove their suits in a fraction of the time needed for existing PPE, significantly reducing the risk of infection.



**Re-Engineered Health Care Worker Suit**

Designed to be more breathable while still providing leak-free barrier protection, improved hood design and easier doffing/removal.



**SPR Barrier Technology**

The SPR "Barrier Technology" is a long-lasting, spray-on barrier that creates electro-static fields that kill and repel microbes on treated surfaces.

**HEALTH CARE WORKER TOOLS**



**STAMPS Sensor**

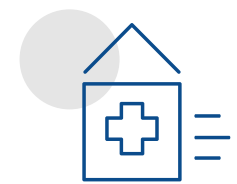
This sensor, which goes on like a band-aid, is both disposable and Blue-tooth-enabled; will measure key vital signs remotely including heart rate, respiratory rate, temperature, and oxygen saturation of Ebola patients in Ebola Treatment Units.



**Drip Assist**

Shift Labs' low-cost, battery-powered infusion monitor delivers IV fluids with precision to patients, eliminating the risk of fluid overload. Fluids administered too aggressively can be harmful to patients, especially young children and patients with conditions that predispose them to fluid overload.

**CARE SETTING & DECONTAMINATION**



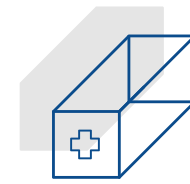
**Rapidly Deployable Ebola Treatment Unit**

Uses ultra-efficient building envelope technology to moderate the temperature of the unit and simplify decontamination efforts – enabling safer and more comfortable conditions for health care workers and patients.



**Reimagined Ebola Treatment Units**

This next generation tent for humanitarian interventions aims to substantially improve working conditions for health care workers through its ergonomic design, allowing for a significant increase in airflow and decrease in ambient temperatures.



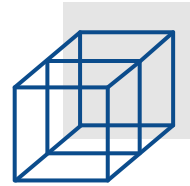
**Smart Pod**

The Emergency 'Smart' Pod serves as an inventive repurposing of easy-to-access shipping containers as scalable, portable Ebola treatment units.



**Decontamination Highlight**

Highlight colorizes standard bleach solutions to allow visualization of disinfected regions, and gives bleach the ability to fully cover and adhere to all surfaces, ensuring complete decontamination.



**Decontamination Chambers**

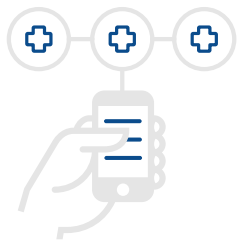
State-of-the-art, easy-to-assemble decontamination chambers from TOMI Environmental Solutions can decontaminate health care workers and equipment in less than 3 minutes to a level of 99.9999% without the use of hazardous chemicals.

**INFORMATION COMMUNICATION TECHNOLOGY**



**CommCare**

An open source mobile platform that supports Ebola management needs to ease the communication burden.



**mHero**

This SMS-based mHealth platform extends and enhances existing national health information systems to support rural and remote health workers.

**BEHAVIOR CHANGE**



**Stop Ebola Music & Media Campaign**

A song, recorded in local languages by twelve of West Africa's most famous musical artists, promoting communities' adoption of behaviors that prevent Ebola transmission.



**Citizen Engagement Platform**

Community engagement platform that facilitates two-way communication between public health officials and citizens using basic mobile phones.

THE FUTURE

**INNOVATIONS CAN**

**STOP**

THE OUTBREAK IN ITS TRACKS AND GET TO ZERO

&

**HELP**

PREPARE FOR THE NEXT OUTBREAK AND BUILD STRONGER HEALTH SYSTEMS