

# LaunchPort with Buttons

## Configuration with Savant Systems

LaunchPort with Buttons work with a Savant system via a HomeWorks QS or Radio Ra 2 processor. By configuring the Savant system to connect to the Lutron system, Savant can monitor the LaunchPort Sleeve Button presses. This can then be used to activate state triggers in the Savant system, which can perform functions.

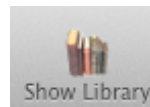
### KILLER APP:

Volume Control

AV system On / Off

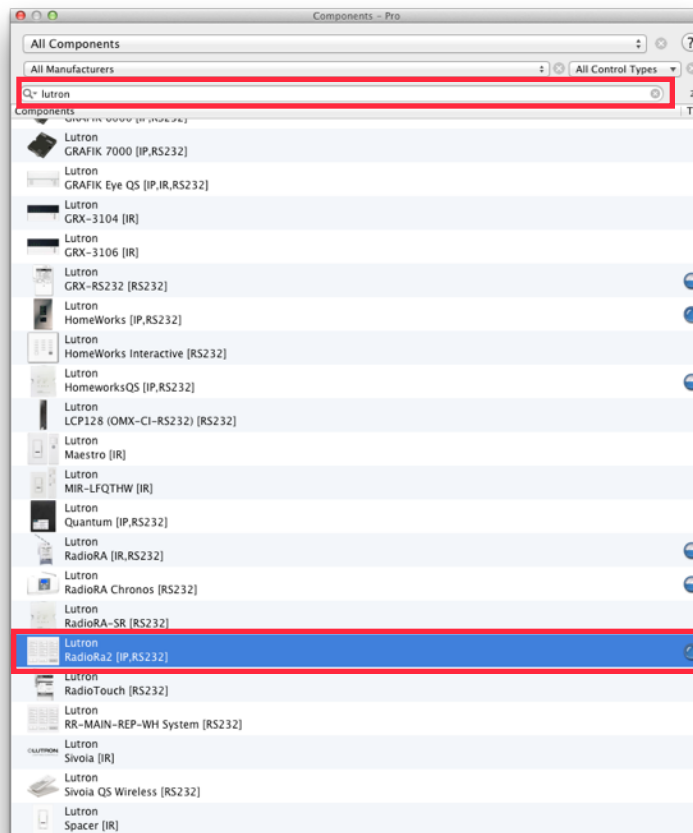
1. Add a Lutron Processor to the control environment:

a. Go to "Show Library" in tool bar



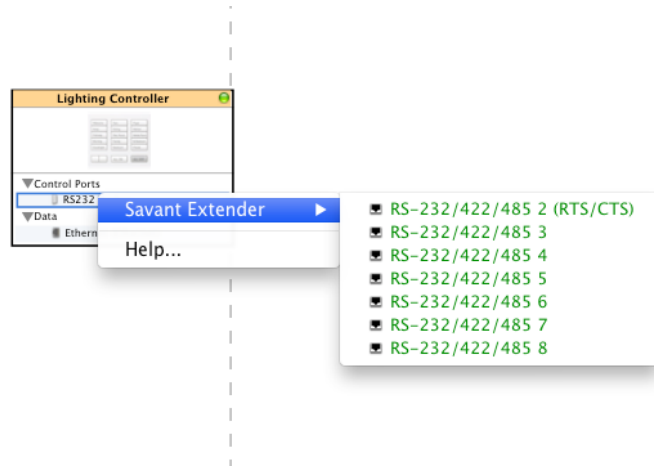
b. Type in "Lutron" into the library search bar

c. Choose the processor from search results: either Radio Ra 2 or HomeWorks QS



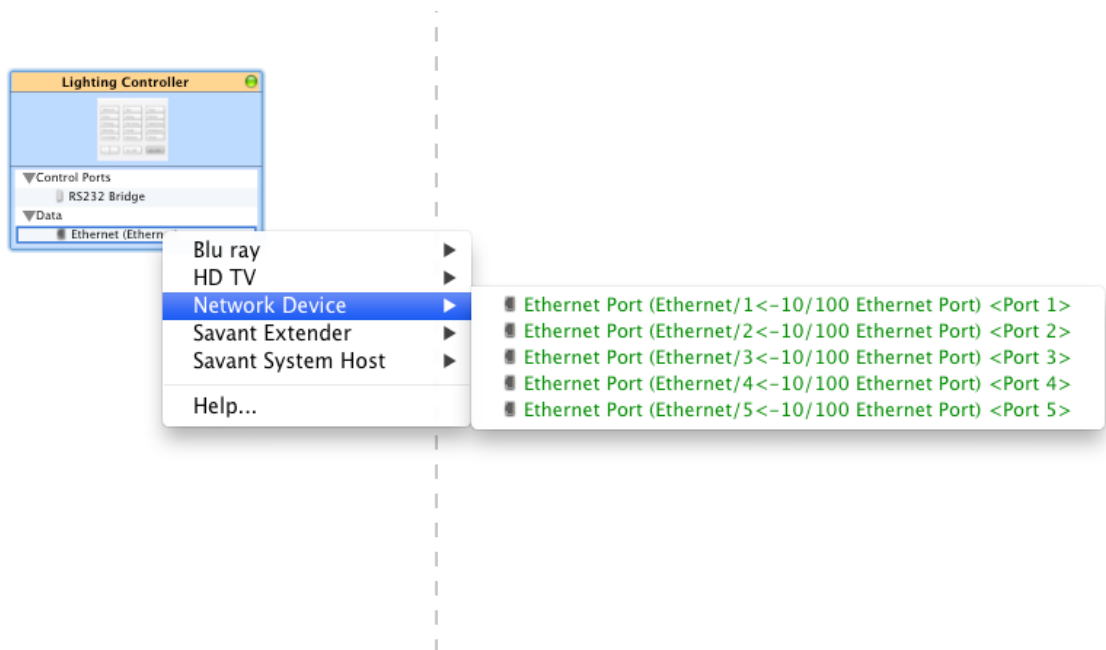
2. Add a network connection from the Lutron Processor:

a. If connecting via RS-232, connect the processor to a port on the network device in the control environment



b. If connecting via IP, connect it to a port on the network device in the control environment

1. Connect the to a network switch

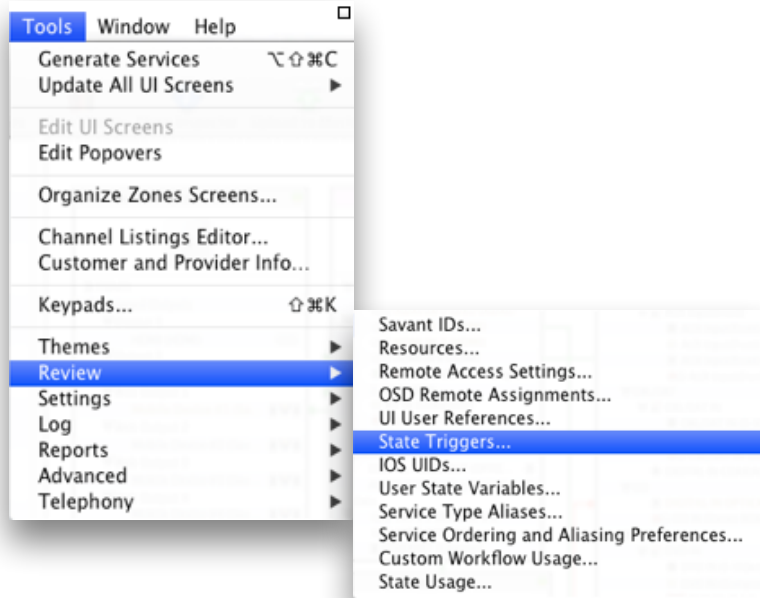


2. Click on the cable that runs between device

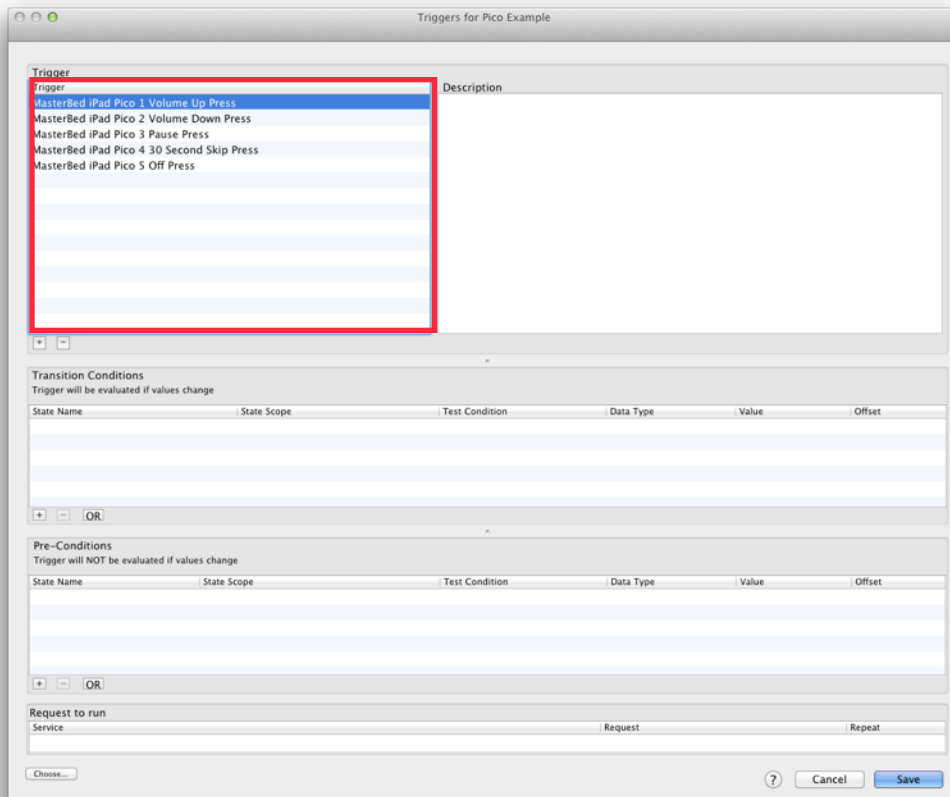
3. Show inspector and enter the IP address in the Host field

4. Generate Services and update UIs

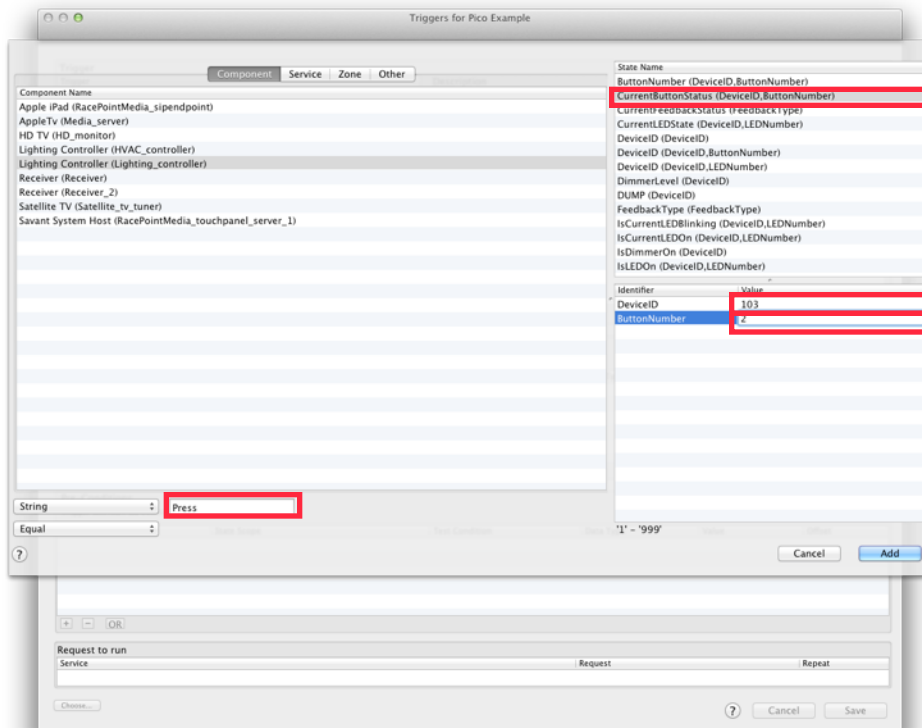
4. Save the File
5. Add State Triggers
  - a. Click on the "Tools" menu > Review > State Triggers...



- b. Create names for the triggers as they relate to the LaunchPort Sleeve Buttons:



c. Create the conditions for each trigger:



1. Choose the component name
2. Choose the state name
3. Type in the Integration ID for the device you'd like to monitor (provided by Lutron Software).
4. Type in the button number you'd like to monitor (see LaunchPort Lutron Integration document)
5. Type in the string command. *NOTE: this should always be "Press" if using a Radio Ra 2 processor and "Pressed" if using a HomeWorks QS processor.*

d. If you need to determine that the command will only effect a certain device, or of it will affect a group of devices in a zone, set a Request to run:

1. Click the Zone Request check box
2. Type in 0.1 seconds for the Repeat Time

