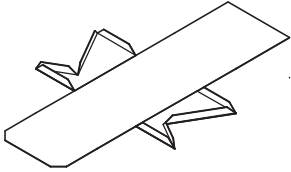
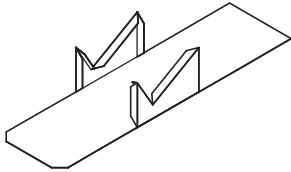


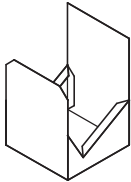
STEP 1: CUT TILT BLOCK  
DO NOT CUT OFF TABS!  
LAY FLAT WITH PRINTED SIDE DOWN



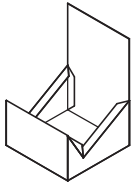
STEP 2: FOLD TABS (7, 8, 9) ON SIDES



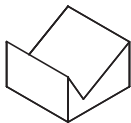
STEP 3: FOLD SIDES UP



STEP 4: FOLD ENDS UP



STEP 5: FOLD TOP2 DOWN, FOLD TAB1 UP

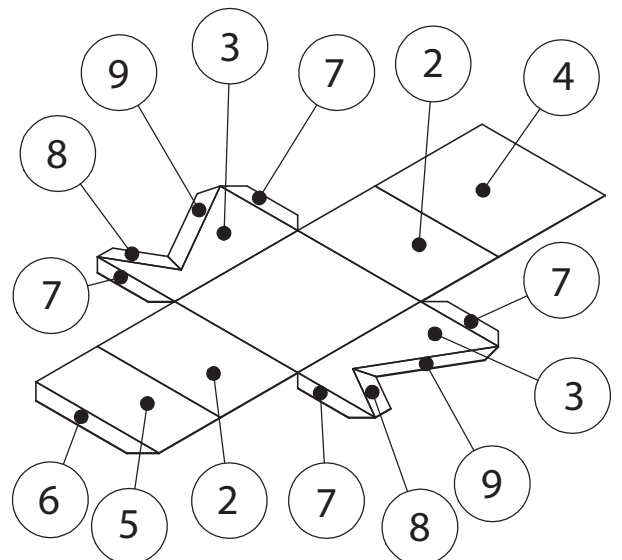


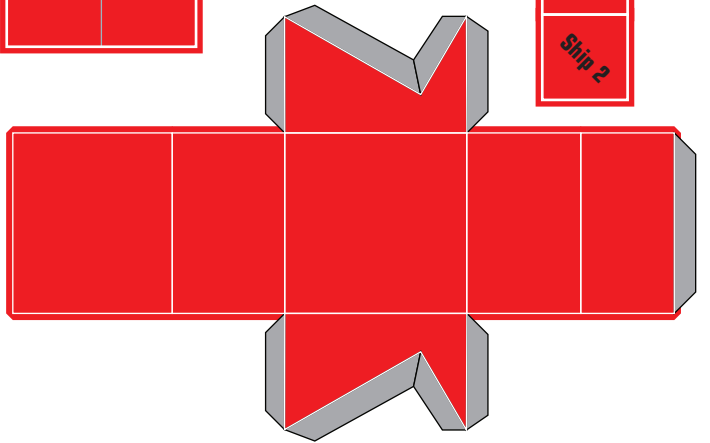
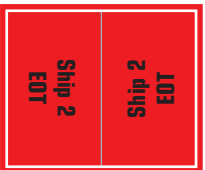
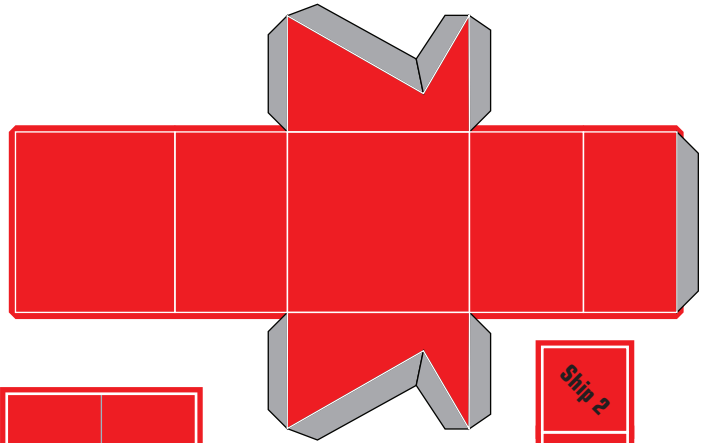
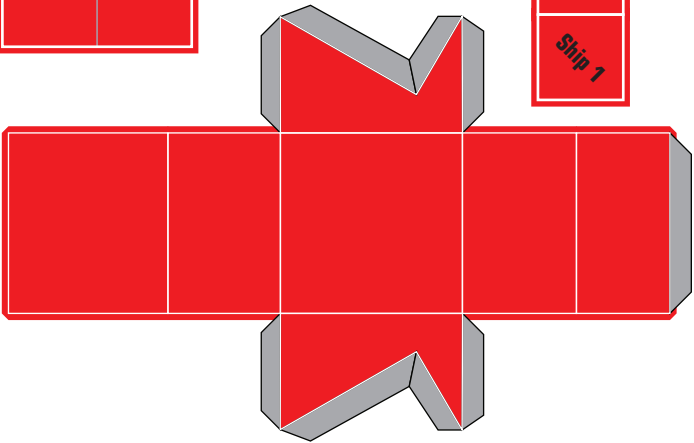
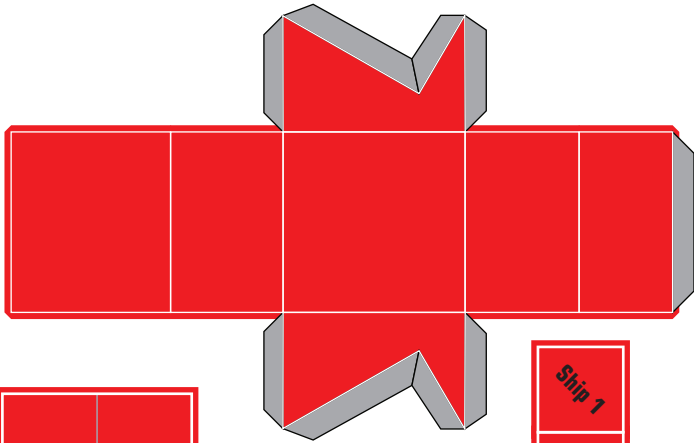
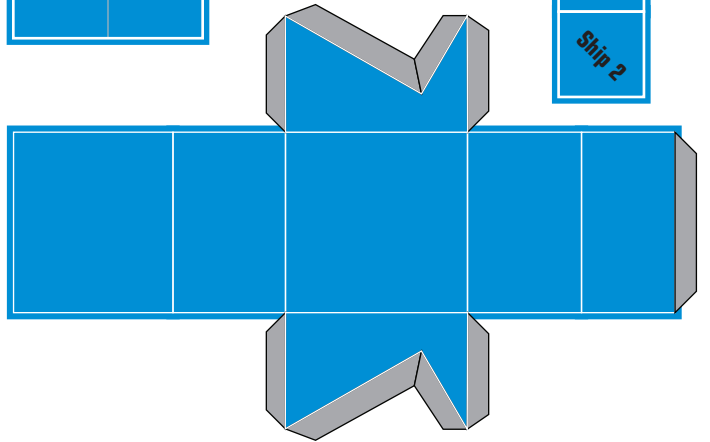
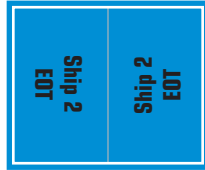
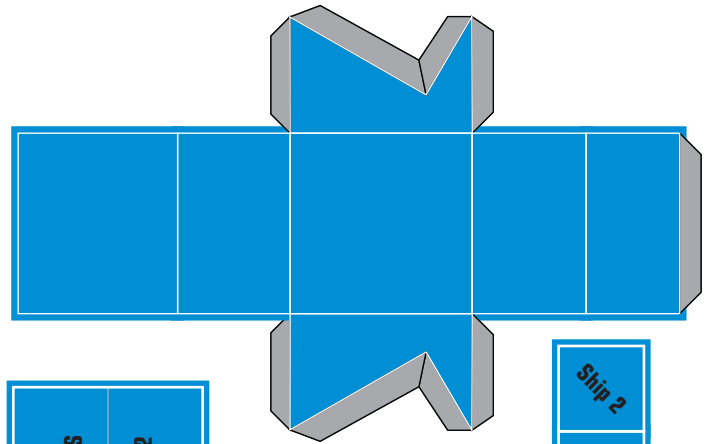
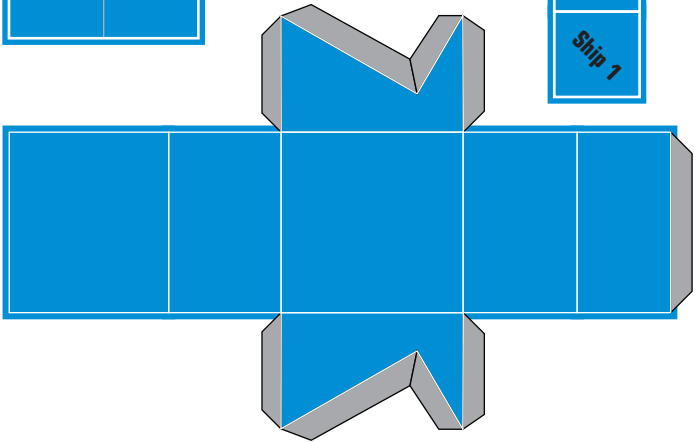
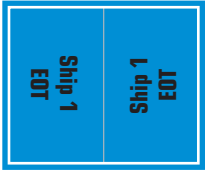
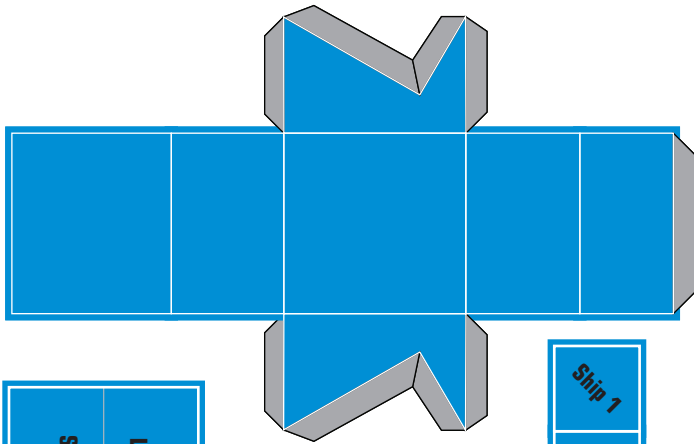
STEP 6 FOLD TOP1 DOWN

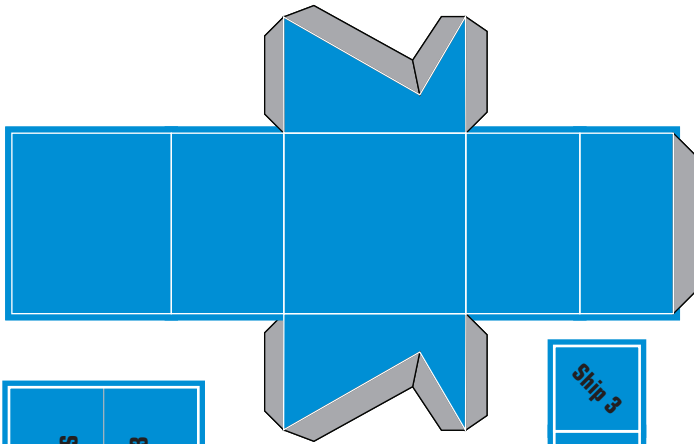
**TIPS:**

MAKE ALL BENDS BEFORE APPLYING GLUE.  
MAKE SURE ALL TABS ARE INSIDE THE BLOCK.  
REGULAR PRINTER PAPER WILL WORK,  
BUT CARD STOCK WORKS BEST.

ITEM NO.	PART DESCRIPTION	QUANTITY
1	BOTTOM	1
2	END	2
3	SIDE	2
4	TOP1	1
5	TOP2	1
6	TAB1	1
7	TAB2	4
8	TAB3	2
9	TAB4	2

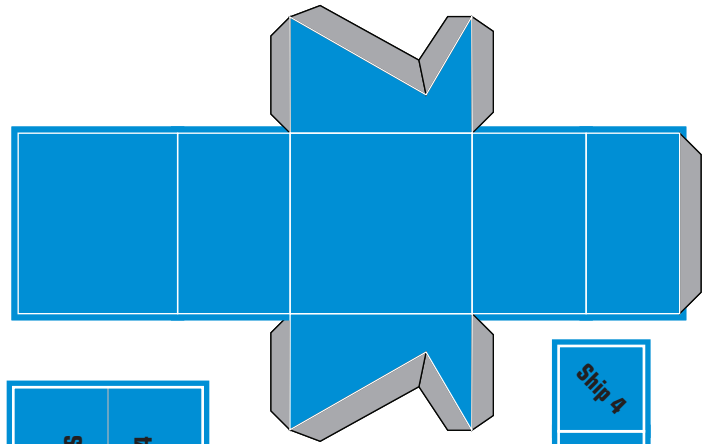
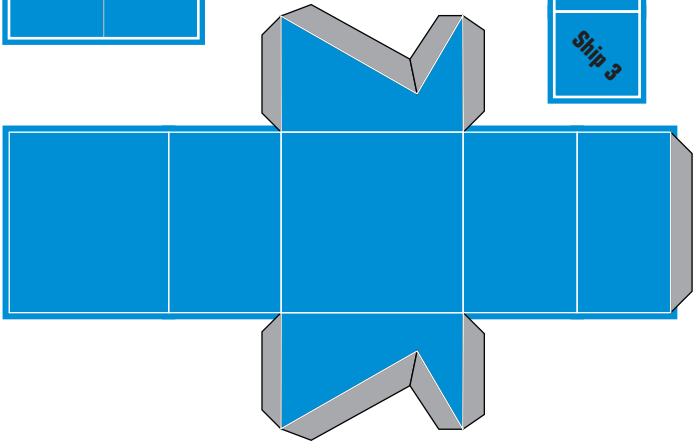






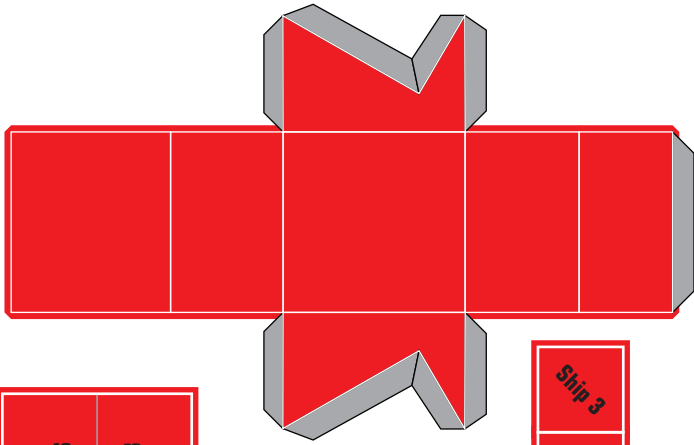
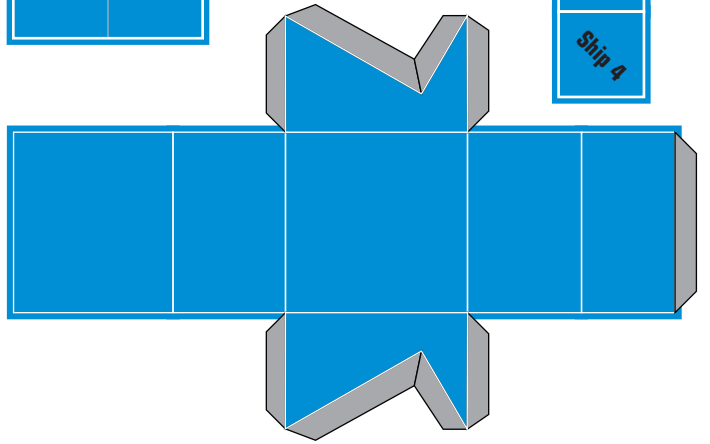
LO3  
Ship 3  
EOT

Ship 3  
Ship 3  
Ship 3



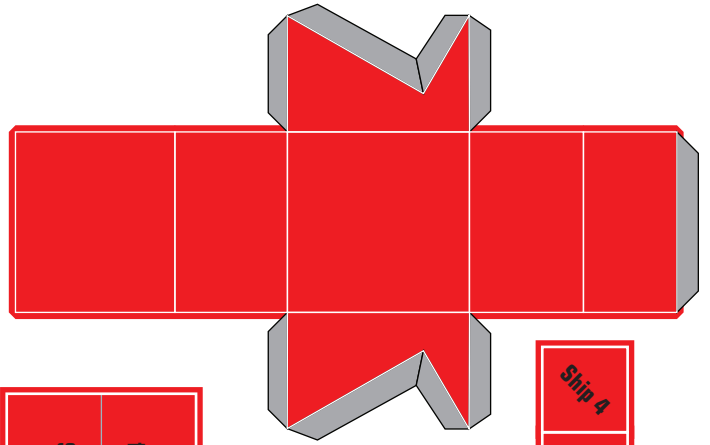
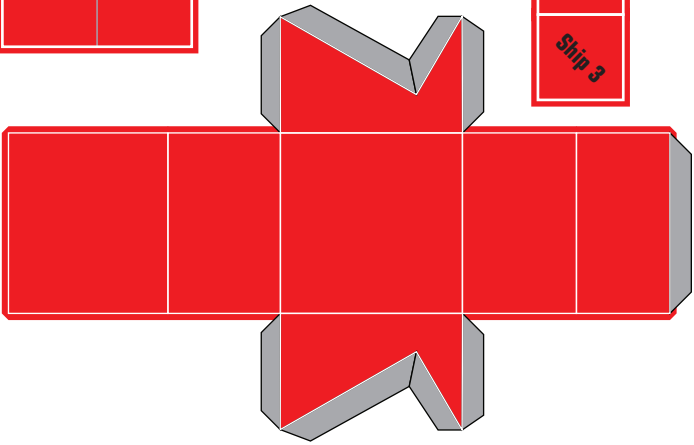
LO3  
Ship 4  
EOT

Ship 4  
Ship 4  
Ship 4



LO3  
Ship 3  
EOT

Ship 3  
Ship 3  
Ship 3



LO3  
Ship 4  
EOT

Ship 4  
Ship 4  
Ship 4

