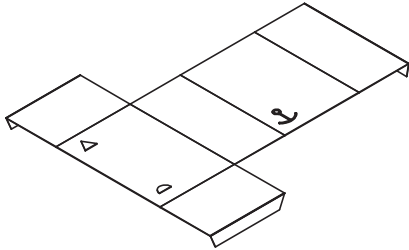
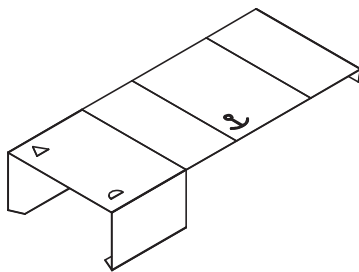


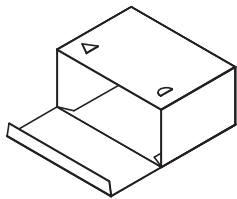
STEP 1: CUT OUT BOX MINI
DO NOT CUT OFF TABS!
LAY FLAT WITH PRINTED SIDE UP



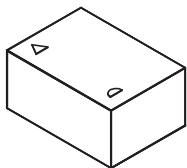
STEP 2: FOLD TABS (3, 6) DOWN



STEP 3: FOLD ENDS (2) DOWN



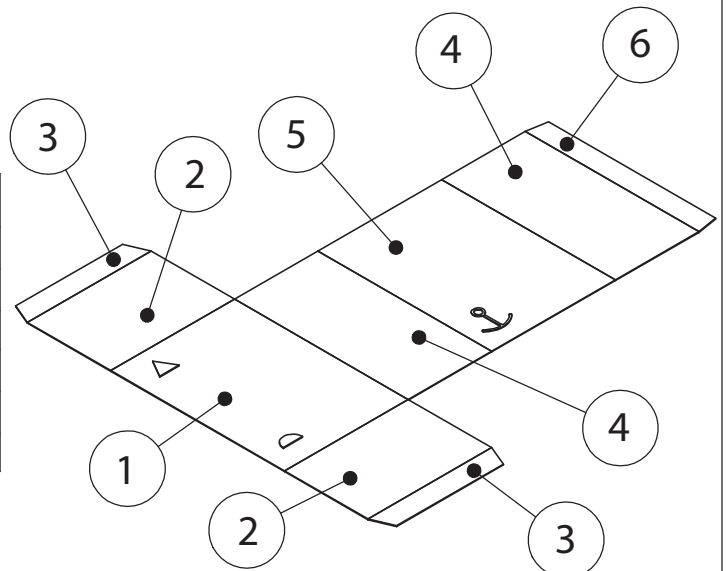
STEP 4: FOLD SIDE (4) DOWN,
FOLD BOTTOM 5 UNDER

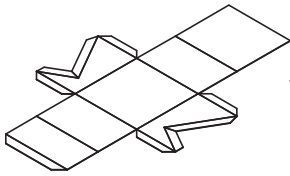


STEP 5: INSERT BALL BEARING,
FOLD SIDE (4) IN

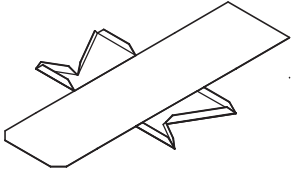
TIPS:
MAKE ALL BENDS BEFORE APPLYING GLUE.
MAKE SURE ALL TABS ARE INSIDE THE BOX.
REGULAR PRINTER PAPER WILL WORK,
BUT CARD STOCK WORKS BEST.

ITEM NO.	PART DESCRIPTION	QUANTITY
1	BOX MINI TOP	1
2	BOX MINI END CAPS	2
3	TAB 1	2
4	BOX MINI SIDES	2
5	BOX MINI BOTTOM	1
6	TAB 2	1

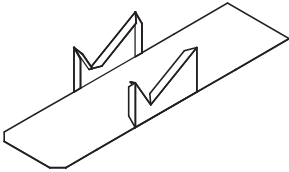




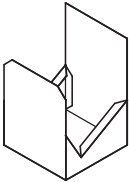
STEP 1: CUT TILT BLOCK
DO NOT CUT OFF TABS!
LAY FLAT WITH PRINTED SIDE DOWN



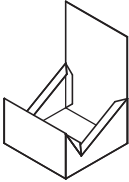
STEP 2: FOLD TABS (7, 8, 9) ON SIDES



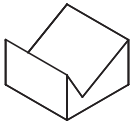
STEP 3: FOLD SIDES UP



STEP 4: FOLD ENDS UP



STEP 5: FOLD TOP2 DOWN, FOLD TAB1 UP



STEP 6 FOLD TOP1 DOWN

TIPS:

MAKE ALL BENDS BEFORE APPLYING GLUE.
MAKE SURE ALL TABS ARE INSIDE THE BLOCK.
REGULAR PRINTER PAPER WILL WORK,
BUT CARD STOCK WORKS BEST.

ITEM NO.	PART DESCRIPTION	QUANTITY
1	BOTTOM	1
2	END	2
3	SIDE	2
4	TOP1	1
5	TOP2	1
6	TAB1	1
7	TAB2	4
8	TAB3	2
9	TAB4	2

