

SAMSUNG



Flip2



Welcome to your best work life

Whether you're solving your next big problem, brainstorming the next big idea or planning your next project, teamwork is key to reaching that next milestone. But today's meeting environments present several digital barriers which can disrupt inspiring and engaging teamwork.

Introducing the Samsung Flip 2, an interactive display that simplifies teamwork without any hassle.

With the Flip 2, you can create freely thanks to a smooth pen-to-paper-like writing experience. Ideas flow through smooth collaboration with an intuitive user interface. And with a host of convenient features, presenting is easier and more flexible than ever so you and your team can share insights and expertise from any source.

Let's Flip. Teamwork simplified.





Contents

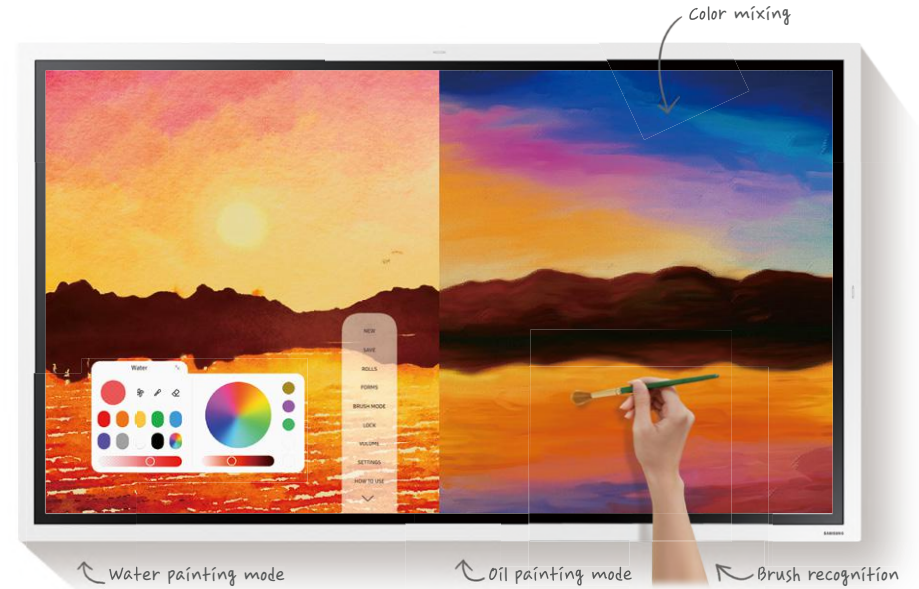
| | |
|----|------------------------|
| 2 | Introduction |
| 6 | Create freely |
| 8 | Collaboration smoothly |
| 10 | Present effortlessly |
| 12 | Share easily |
| 14 | Innovative design |
| 16 | Complete management |
| 17 | Business applications |
| 24 | Specifications |

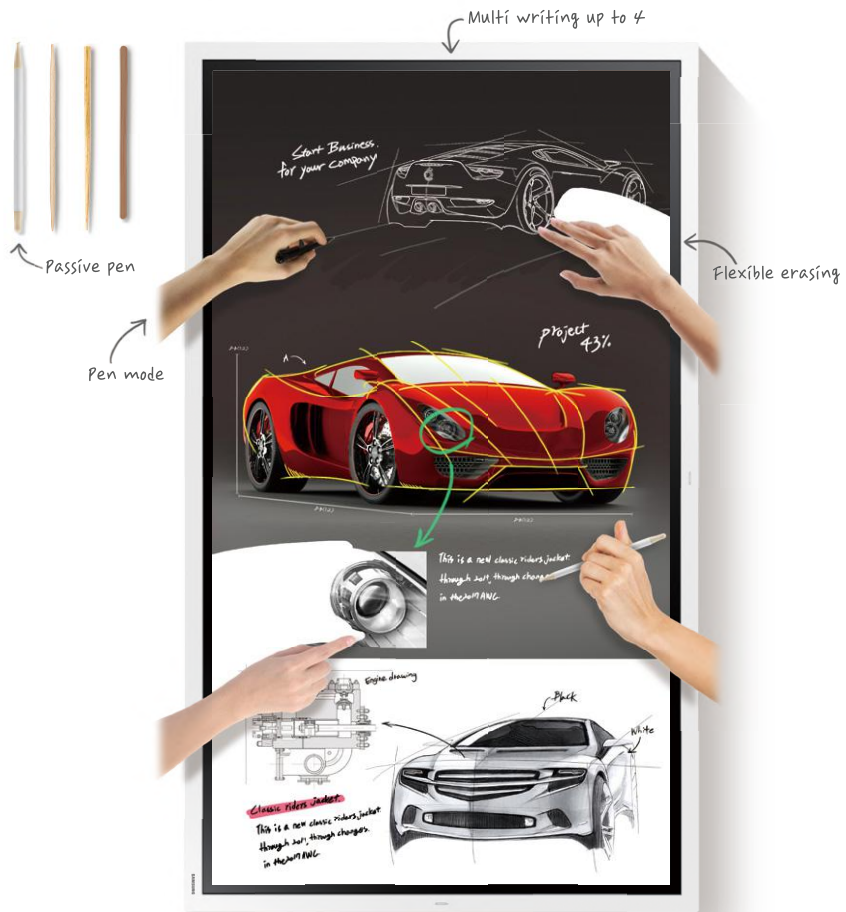


Create freely

Tap into inspiration without technical obstacles

Samsung Flip allows you to enjoy a smooth, pen-to-paper-like writing experience, meaning you experience the next-generation digital flip chart like its real paper. Simply edit your annotation with a finger or palm swipe motion. Easily discover new ideas without using multiple sheets of paper. Create art at the stroke of a brush in water as well as oil painting modes. And for simultaneous interaction with your team members, up to four people can write at the same time on Flip screen.





Pen mode

When in pen mode, the display provides smooth, fast writing in a variety of colors, styles and widths. Users don't need to worry about having a certain type of pen either, with the ability to freely use any object as a writing tool.

Brush mode

Brush mode allows you to create art at the stroke of a brush with water and oil painting modes, which both allow different styles and textures. The Flip also gives users a full, vibrant color palette, even allowing flexible color mixing on the Flip roll. This provides enhanced realistic expressions, customized for water and oil modes. On water mode, you can adjust the settings for even more detailed artwork, and both modes have object thickness recognition, ensuring the Flip recognizes the pen regardless of the size of the brush tip.

Flexible erasing

Flexible erasing means that with just a simple finger or palm swipe motion, users can quickly and easily clear a small section of content, or the full screen.

Multi writing up to 4

Up to four different meeting participants can make notes at the same time using the embedded pen or virtually any writing tool.

InGlass™ technology

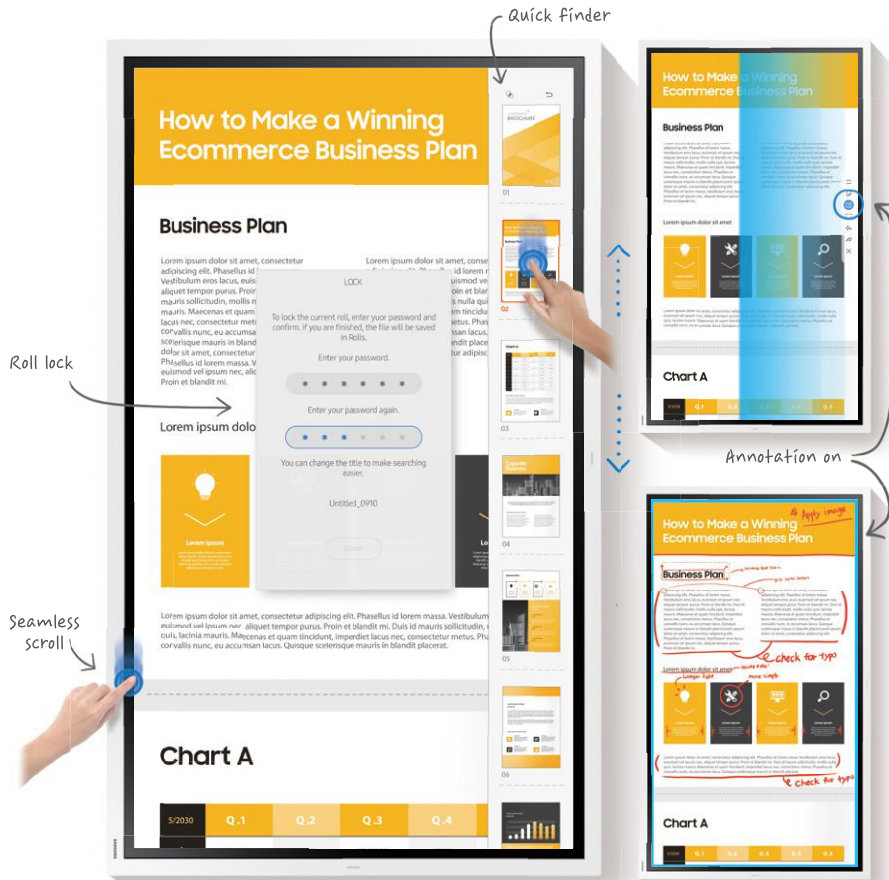
InGlass™ technology ensures real-time feedback and speeds without delay. This allows users to experience smooth writing or drawing, equivalent to that of working on traditional paper.

Collaborate smoothly

Tap into open communication where ideas flow

Samsung Flip is a comprehensive solution, offering a variety of tools for creative and efficient collaboration. You and your team can directly edit images on the Flip roll at the simple click of a button. You can write on any background source with annotation layer to avoid affecting the original source. Scrolling through pages and navigating to any desired page is always smooth and quick for enhanced collaboration. And don't forget to ensure all your hard work and ideas are kept safe with a password security system.





Selection tool

Samsung Flip offers enhanced versatility, allowing users to quickly and easily select, crop, capture, move and edit any images on the Flip's roll without any hassle.

Merge to roll

Images can also be merged to the roll with just one click of a button, allowing it to be edited or erased.

Annotation on

Samsung Flip allows users to write on any background source. By simply clicking the note layer button, users can enjoy smooth writing any time on any content displayed, without affecting work behind the original layer.

Seamless scroll

Samsung Flip allows users to stay well organized through clear page dividers, while providing the ability to quickly scroll through up to 20 pages at a time.

Quick finder

An intuitive, user-friendly menu simplifies navigation and reduces the time required to access controls or view content in its entirety. Facilitators also can preview individual content pages and make instant changes directly on the screen.

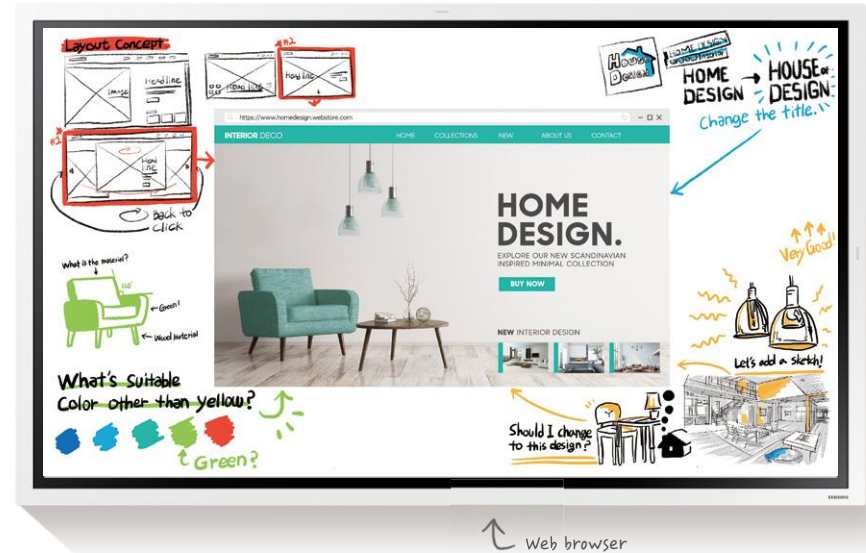
Roll lock

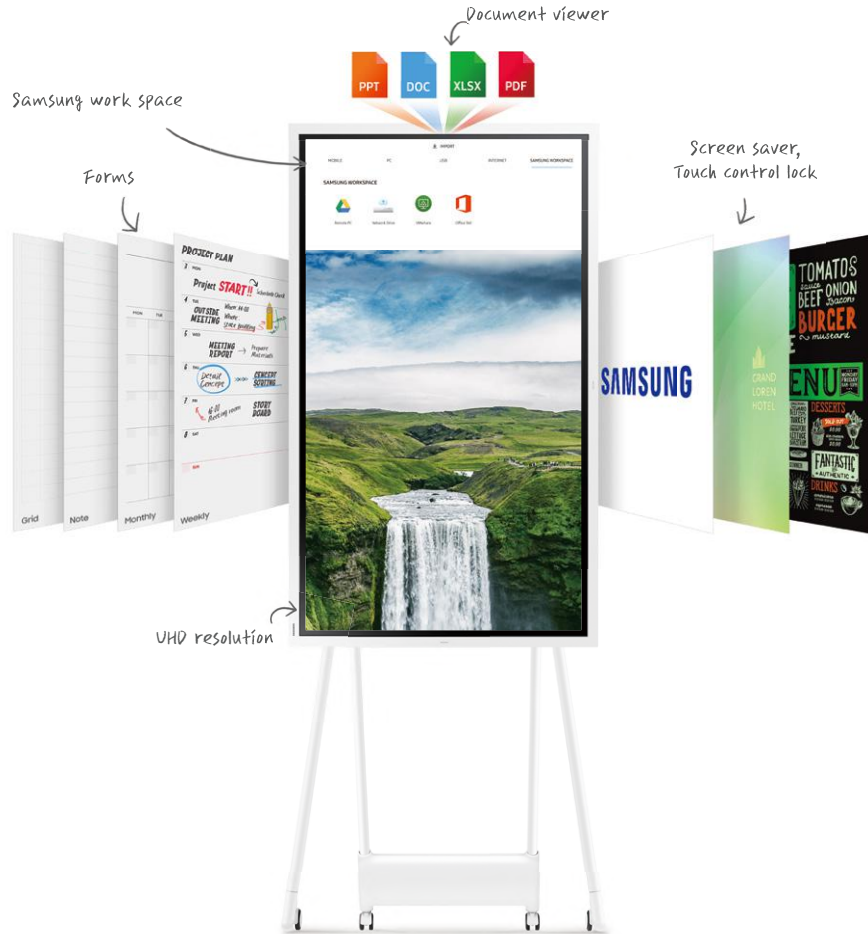
Ensure that your latest and greatest ideas remain in the right hands through a reinforced security system. Each in-office team can set a unique, numeric 6-digit password to lock the display and remove critical content from view.

Present effortlessly

Tap into your own expertise without complications

Samsung Flip enables effortless presentation, supported by innovative features. You can access any web browser directly, various types of documents and cloud services, in addition to control via a PC with no physical connection needed. When not being used, the Flip can be used as a message board showing a preselected screensaver such as a company logo or menu board, while touch lock removes editing access for controlled content presentation. These are all reinforced with UHD picture quality and flexible pivot functionality for an enhanced visual experience.





Web browser

Samsung Flip offers direct access to any web browser and allows users to write new ideas besides the browser, even while video content is playing.

Forms

Samsung Flip can be used for a wide range of business applications, providing embedded versatile forms in both landscape and portrait mode. Users can use the Flip as a calendar, scheduler, note or checklist board, perfectly matching any business need.

Document viewer

Users can not only open images, but also documents such as Microsoft Word, PowerPoint and PDF, with a built-in document viewer. Once the selected document is open, users can then read, capture and take notes on them.

Samsung Workspace

With security provided by Knox, Samsung Workspace supports wireless cloud service access and control of a PC without needing a physical connection. The Samsung Flip allows users to connect their PC to the board remotely, meaning any meeting can be started without a PC to ensure efficiency. A Bluetooth keyboard and mouse can also be connected to the Flip, creating a convenient meeting environment.

Screen saver

When in standby mode, the Flip can be tailored to include a company logo, menu board or preferred image. This allows companies to natively display important messages, updates and daily content.

Touch control lock

Users have the option to lock the screen, removing access for others to change the content presented on the screen. When the touch control lock is set, drawing and writing on the display are prohibited.

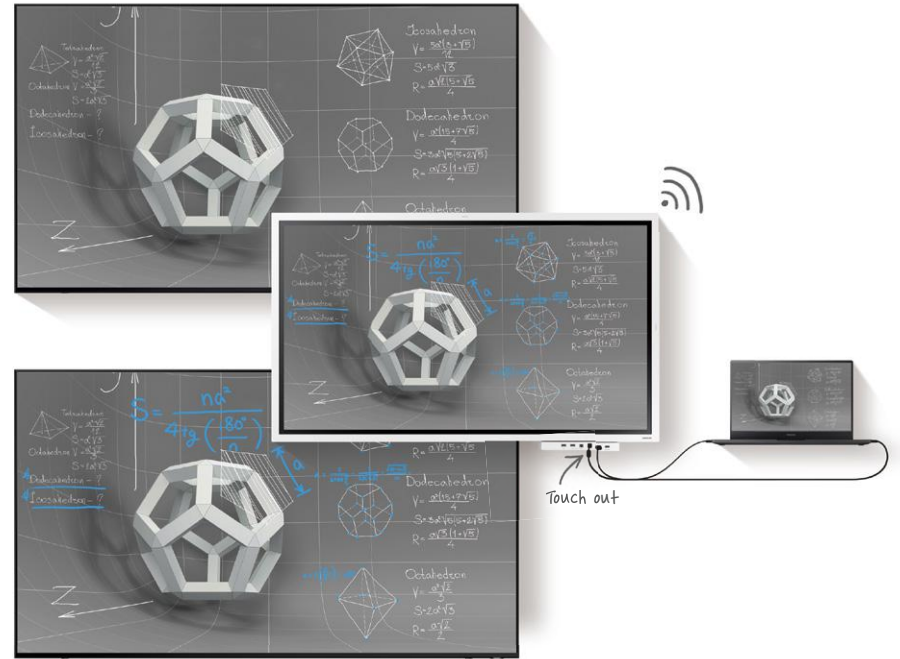
UHD resolution & Pivot

Regardless of annotation size or style, the Flip display maintains brilliant, eye-catching UHD picture quality. The Samsung Flip offers added flexibility for presentation in any desired format, such as portrait or landscape mode, thanks to convenient pivot functionality.

Share easily

Tap into any insight from any source in any shape

Samsung Flip enhances idea sharing for a variety of environments and audience sizes. Multiple connectivity options mean that you can share content by projecting on to another large display, or sync your personal devices using the touch out function, for real-time content sharing. Once the meeting is over, recaps can be distributed via the Flip without any hassle.

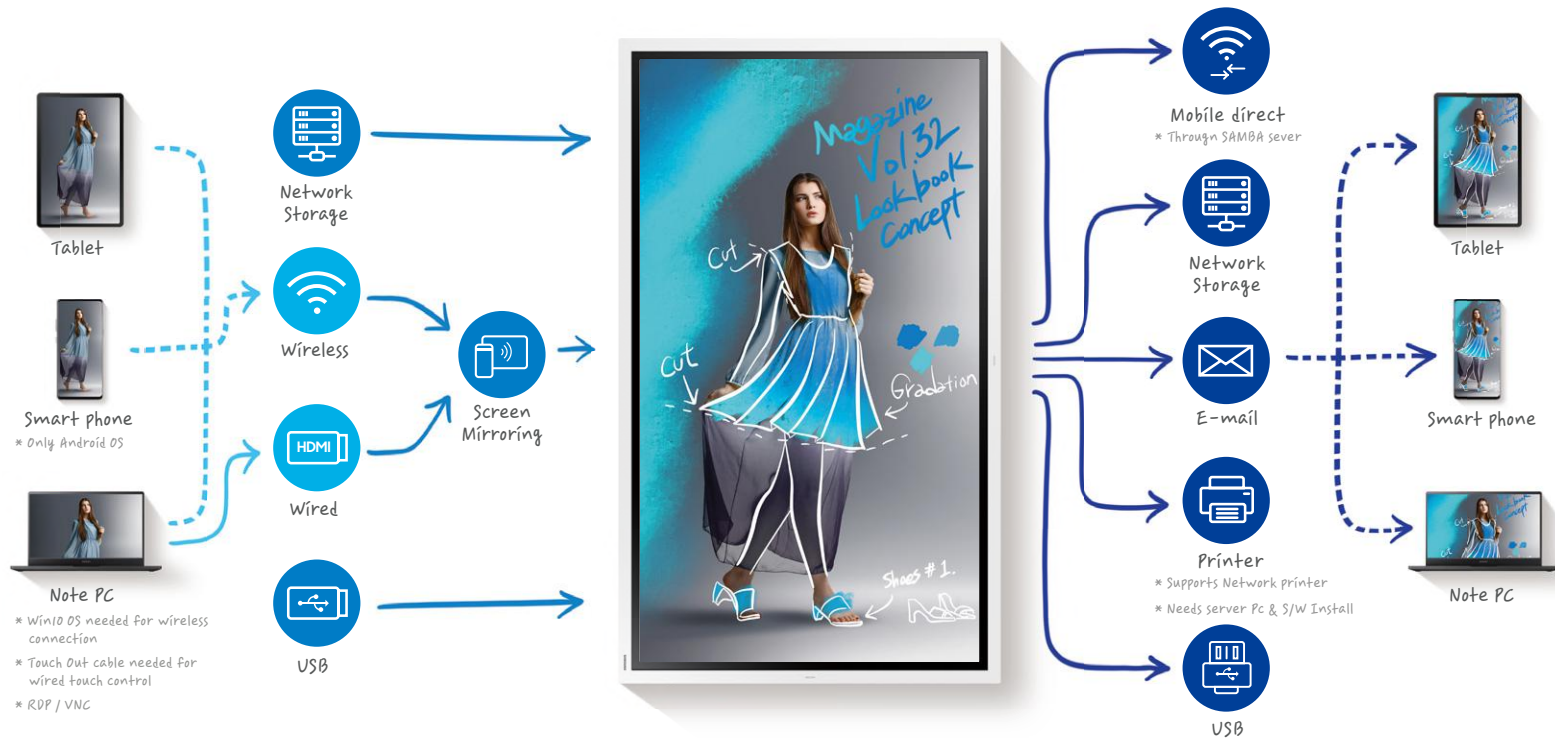


Screen share

Users can project content on the Samsung Flip directly to another large-sized digital display, using screen mirroring or HDMI out connection. Users can also project the content on a personal device such as a note PC, using the

Touch out

The touch out functionality allows users to sync their personal devices with the Flip, offering real-time content sharing and control. Any changes made on the Flip display will be mirrored on the connected device, and vice versa, for efficient collaboration.



Versatile connectivity

Users are empowered by the Flip's versatile connection options. USB, HDMI, NFC and screen mirroring capabilities provide interactive content visibility, notation and sharing. The Flip also offers an optional tray as a more powerful connectivity extension.

Easy sharing

Following any meeting, users can distribute recaps to all attendees and colleagues, removing the frustration traditionally associated with handwritten meeting notes. Important conversations and content are stored within the Flip in real-time, easily shareable across mobile and digital channels.

Innovative design

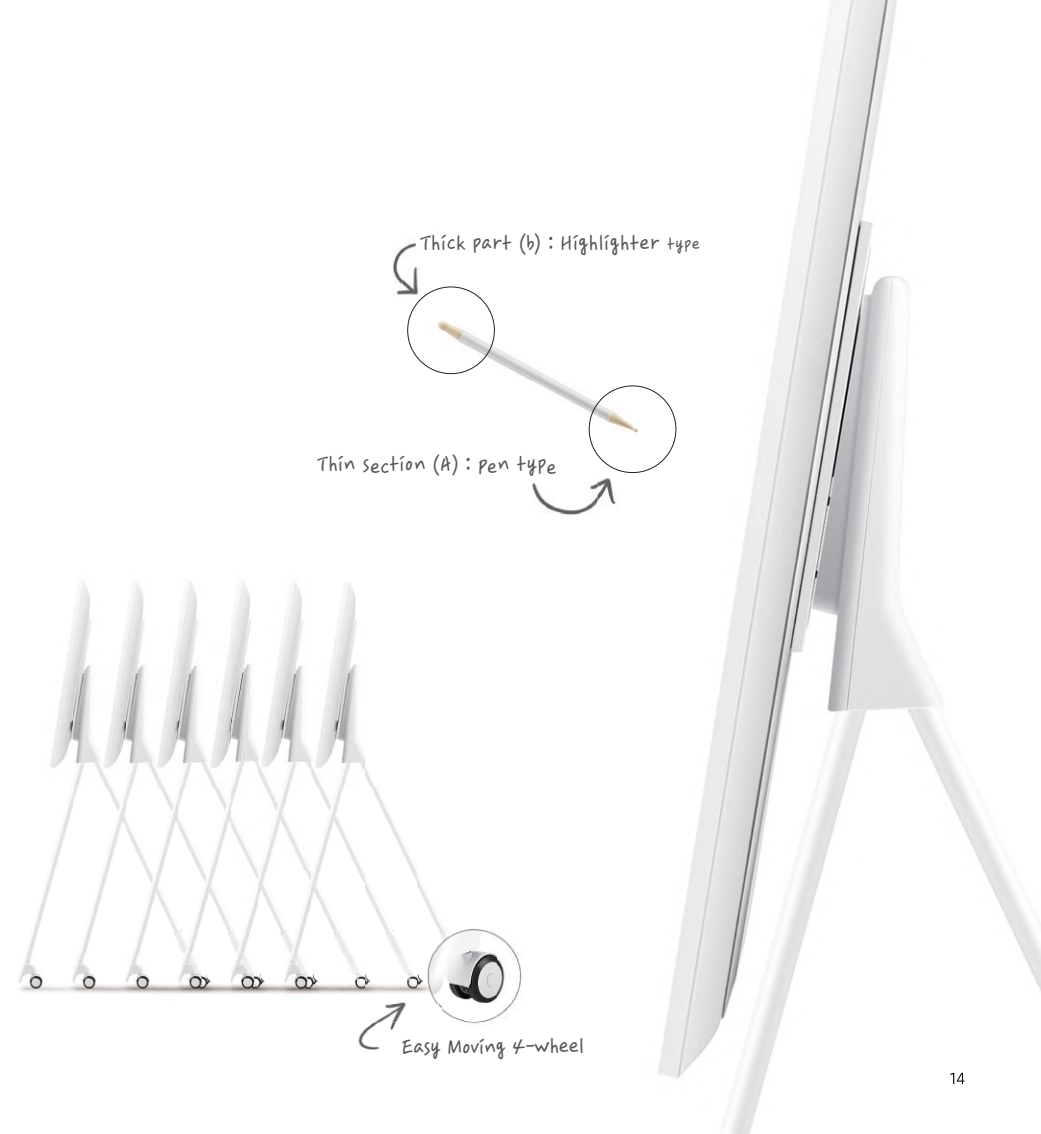
Easy to use anywhere

Samsung Flip allows you to customize and work based on your ideal writing setup anywhere.

With the new, slim stand for Flip 2 55", you can feel comfortable that there will be enough working space in front of the display when using it. A portable, wheel-based stand empowers you to start a meeting in any location, at any time. If you need to manage multiple Flip devices in limited space, you can easily stock them thanks to its enhanced, hinge assembly structure.

For large room or with bigger audience, the new line up Flip 2 65" would be the best solution. The Flip 65" supports no gap wall-mount which enables users to install the Flip even closer to the wall, leaving you with a much thinner and neater overall look.

Both models have a convenient magnetic pen holder, meaning you do not need to worry about misplacing the pen and can get to work immediately once coming back to the display.





Pivot

No gap wall mount

Magnetic pen holder

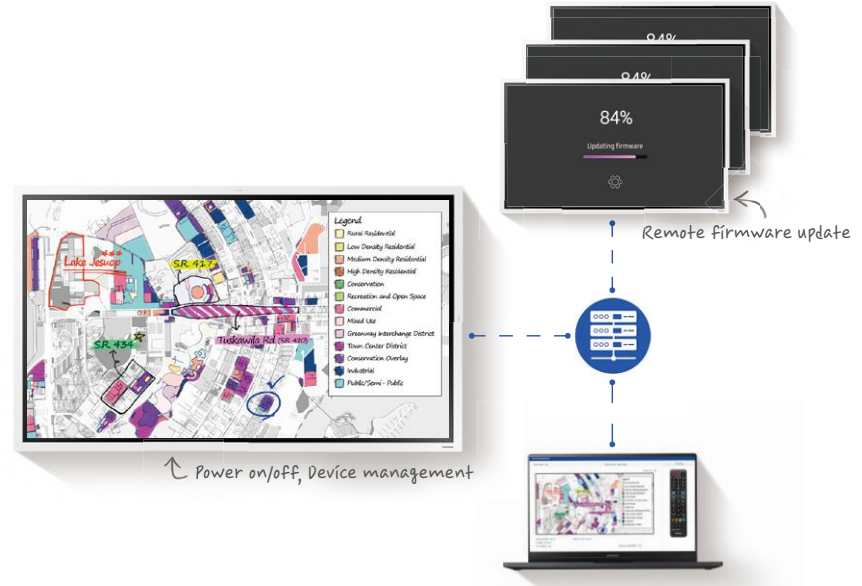
Optional Pen tray

Front working space

Complete management

Advanced management tools made easy

Samsung Flip offers improved management tools and security functions to ensure a convenient and productive meeting experience, even in large enterprises where technical constraints on infrastructure might be a factor. You can flexibly manage multiple Flip displays with the convenience of remote management.



Remote management

Remote management maintains remote monitoring features such as auto save, auto power off and the ability to adjust proxy server settings and delete files remotely. Additionally, Samsung Flip offers improved centralized management and security regardless of location with remote firmware updates, remote power on/off, and the ability to adjust security settings such as network security lock, USB lock and capture function lock.



LDAP (Lightweight Directory Access Protocol)
Connect to an enterprise user database



WPAN (802.1x based standard)
Secure wireless connectivity



File Security
Set to delete files regularly



OTN (Over the Network)
Automatic firmware updates



From large corporations to small businesses, education, retail, hospitality and beyond, the Samsung Flip is the perfect addition to let you live your best work life. With 55" and 65" models, the Samsung Flip is a perfect solution for a wide variety of uses from teaching in classrooms, to personalized menu boards, with the Flip's diverse functionalities, teamwork is simplified, problems are solved faster, and creativity comes first allowing your best ideas to be front and center.





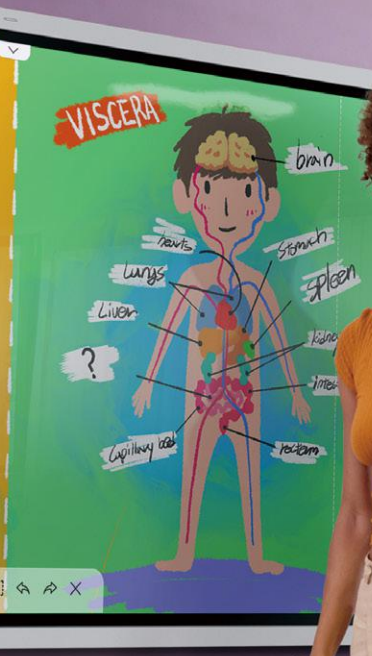
Corporate

Samsung Flip makes teamwork and collaboration more efficient. Allowing simultaneous input for up to 4 users, all team members can contribute and feel involved in the meeting, sharing new ideas and content from connected mobile devices.

Following the meeting, participants can easily share and review notes directly from the display, saving time and eliminating the need for a written recap.

With size options of 55" and 65" there are multiple options to fit the size of the meeting room. And for businesses with limited meeting spaces, the Flip's portable stand can transform any space into a meeting room. Convenient wall mounts are also available for temporary installations.

Let's Flip. Teamwork simplified.





Education

Samsung Flip is the perfect tool to engage today's young students, facilitating critical teaching moments and helping students and instructors collaborate, expressing themselves with powerful technology that couldn't be easier to use.

As an upgrade to traditional boards, the Flip helps keep kids engaged. Unique features like brush mode, intuitive notation and navigation, web browser integration and document viewer help students participate directly in their own learning.

For higher education, Samsung Flip is a powerful tool to keep a larger auditorium involved in a lecture. The display can be mirrored on a larger screen, allowing students to see the details. In student labs, the Flip helps students work together to generate new ideas, share and learn together.

Let's Flip. Learning simplified.



Hotel

For hotels and other hospitality venues, the Samsung Flip allows for flexible communication, giving managers the ability to efficiently and intuitively manage conference schedules. Centralized management tools also allow hotels to easily control multiple Flip devices.

The Flip's portable, wheel-based stand allows hotels to provide a convenient, modern amenity for conference rooms big and small while simultaneously enhancing a hotel's brand image with innovative design and functionality replacing outdated projector conference room setups. When not in use, the portable stand also allows for easy storage.

Let's Flip. Communication simplified.



Retail

The Flip's wide variety of features provide many opportunities to attract and communicate with customers, from original menus to an interactive whiteboard or even bringing special offerings to life.

Using the touch control lock function, retailers can easily maintain up-to-date information. Additionally, with the artistic features of Brush Mode, there's no limit to the creativity and expression made possible for retailers through the Flip.

Let's Flip. Business simplified.

Flip 2 Specifications

| | | WM55R | WM65R | |
|--------------------------|-----------------------|---|--|---|
| Panel | Diagonal Size | 55" | 65" | |
| | Type | 60Hz New Edge | 60Hz New Edge | |
| | Resolution | 3,840 x 2,160 (Landscape) | 3,840 x 2,160 (Landscape) | |
| | Brightness(Typ.) | 350 (without glass), 220 (with glass) | 350 (without glass), 220 (with glass) | |
| | Contrast Ratio(Typ.) | 4000:1 (Typ.)(without glass) | 4000:1 (Typ.)(without glass) | |
| | Viewing Angle(H/V) | 178:178 | 178:178 | |
| | Operation Hour | 16/7 | 16/7 | |
| | Response Time(G-to-G) | 8ms(Typ.) | 8ms(Typ.) | |
| Sound | Speaker Type | Built in Speaker (10W x 2) | Built in Speaker (10W x 2) | |
| Connectivity | INPUT | VIDEO | (Basic) HDMI 2 (With Tray) HDMI 3 | (Basic) HDMI 2 (With Tray) HDMI 3 |
| | | USB | (Basic) USB 1 (With Tray) USB 2, USB External (In/Out) 1 | (Basic) USB 1 (With Tray) USB 2, USB External (In/Out) 1 |
| | OUTPUT | Touch Out | (Basic) Touch Out 1 (USB Upstream Type), Audio Out 1 (With Tray) Touch Out 2, Audio Out 1, Screen Share(HDMI-Out) 1 | (Basic) HDMI 2 (With Tray) HDMI 3 |
| | INTERNAL | SENSOR | (Basic) Acceleration sensor (With Tray) Acceleration sensor, NFC | (Basic) Acceleration sensor (With Tray) Acceleration sensor, NFC |
| | EXTERNAL | CONTROL | Touch Input, RS232C, RJ45 (Not for User Control) | Touch Input, RS232C, RJ45 (Not for User Control) |
| | Touch | Type | InGlass™ | InGlass™ |
| # of Drawing | | Multi writing up to 4 | Multi writing up to 4 | |
| Touch Pen Type | | Passive Pen with magnet | Passive Pen with magnet | |
| Object Recognition Range | | 2mm/ 4mm / 8mm / 50mm, 1024 Level on Brush Mode | 2mm/ 4mm / 8mm / 50mm, 1024 Level on Brush Mode | |
| Touch Response Time | | 6.7ms | 6.7ms | |
| Power | Type | Internal | Internal | |
| | Power Supply | AC 100~240V 50/60Hz | AC 100~240V 50/60Hz | |
| | Power Consumption | Max[W/h] | 154 | 181.5 |
| | | Typical[W/h] | 80 | 100 |
| | | Rating[W/h] | 140 | 165 |
| | | Stand-by[W/h] | 0.5 | 0.5 |
| BTU[W/h] | | 525.14 | 618.915 | |

Flip 2 Specifications

| | | | WM55R | WM65R | |
|----------------|-----------------------------------|-----------------------|--|---|---|
| MechanicalSpec | Dimension (mm) | Set | 1297.4(W) x 768.2(H) x 59.9(D) | 1522.4(W) x 897.6(H) x 62.9(D) | |
| | | Package | 1464(W) x 915(H) x 190(D) | 1691(W) x 1055(H) x 198(D) | |
| | Weight (kg) | Set | 28.2 | 40.0 | |
| | | Package | 35.2 | 50.6 | |
| | Color | | Light gray | Light gray | |
| | VESA Mount | | 400:400 | 400:400 | |
| | Protection Glass | | Yes | Yes | |
| | Stand Type | | Moving Stand, Wallmount | No-Gap Wall Mount | |
| | Rotation* | | Available with Flip moving stand (STN-WM55R) | N/A with Flip No-Gap Wallmount (WMN-WM65R) | |
| | Power Cable Length | | 3m | 3m | |
| Accessory | | Cover-Jack | Cover-Jack | | |
| Operation | Operating Temperature | | 0°C~ 40°C | 0°C~ 40°C | |
| | Humidity | | 10~80% | 10~80% | |
| Feature | Key | | Flip App | Flip App | |
| | | Special | H/W | Super Clear Coating, Temperature Sensor, Pivot Display, Clock Battery (168hrs Clock Keeping), Built in Speaker(10W x 2), WiFi Module Embedded | Super Clear Coating, Temperature Sensor, Pivot Display, Clock Battery(168hrs Clock Keeping) Built in Speaker(10W x 2), WiFi Module Embedded |
| | | S/W | Flip S/W | Flip S/W | |
| | | Platform | Muse-M (Tizen 5.0) | Muse-M (Tizen 5.0) | |
| | Internal Player (Embedded H/W) | processor | | CA72 Quad(1.7GHz) | CA72 Quad(1.7GHz) |
| | | On-Chip Cache Memory | | L1 (I/D) : 32KB / 32KB, L2 (Unified) : 1MB | L1 (I/D) : 32KB / 32KB, L2 (Unified) : 1MB |
| | | Clock Speed | | 1.7GHz CPU Quad | 1.7GHz CPU Quad |
| | | Main Memory Interface | | LPDDR4 1.6GHz 64bit 2.5GB | LPDDR4 1.6GHz 64bit 2.5GB |
| | | Graphics | | 2D & 3D Graphics Engine - Up to 1920x1080. 32bpp - Supports OpenGL ES | 2D & 3D Graphics Engine - Up to 1920x1080. 32bpp - Supports OpenGL ES |
| | | Storage | | 8GB (2.65GB Occupied by O/S, 5.35GB Available) | 8GB (2.65GB Occupied by O/S, 5.35GB Available) |
| | | IO Ports | | USB 2.0 | USB 2.0 |
| | | Operating System | | Samsung Proprietary OS(VDLinux) | Samsung Proprietary OS(VDLinux) |
| | Accessories | Included | | Passive Pen(2), Power Cable, Touch Out Cable (USB upstream) | Passive Pen(2), Power Cable, Touch Out Cable (USB upstream) |
| Optional | | Stand | STN-WM55R | N/A | |
| | | Wallmount | WMN4277SE | WMN-WM65R | |
| | | Tray | CY-TF65BRC | CY-TF65BRC | |
| | | Specialty | Flip UX | Flip UX | |

* Available with rotation support 3rd party accessory

Flip 2 Specifications

Stand for WM55R

| | | | |
|-----------------|----------------|----------------------------|--|
| Mechanical Spec | Dimension (mm) | Set | 835(W) x 1631.1(H) x 850.6(D) |
| | | Package | 1650(W) x 860(H) x 208(D) |
| Weight (kg) | Set | Set | 34.5 |
| | | Package | 41.5 |
| Color | | Light Gray | |
| Vesa Mount | | WMN4277SE | |
| Rotation | | Pivot Supports (90°) | |
| Accessories | Included | Installation Guide, Screws | |
| Feature | Special | H/W | Slim Design, No Assembly Required Installation |



Wallmount for WM65R (WMN-WM65R)

| | | | |
|-----------------|----------------|----------------------------|---|
| Mechanical Spec | Dimension (mm) | Set | 520(W) x 280.3(H) x 15.9(D) mm |
| | | Package | 594(W) x 337(H) x 75(D) mm |
| Weight (kg) | Set | Set | 1.75 |
| | | Package | 3.2 |
| Color | | Light Gray | |
| Vesa Mount | | 400 X 400 | |
| Rotation | | N/A | |
| Accessories | Included | Installation Guide, Screws | |
| Feature | Special | H/W | No-Gap Spacing, Extra Bracket for strong fixation |



Wallmount for WM55R (WMN4277SE)

| | | | |
|-----------------|----------------|----------------------------|------------------------------|
| Mechanical Spec | Dimension (mm) | Set | 465(W) x 442(H) x 24.5(D) mm |
| | | Package | 510(W) x 280(H) x 90(D) mm |
| Weight (kg) | Set | Set | 5.5 |
| | | Package | 6.8 |
| Color | | Black | |
| Vesa Mount | | 400 X 400 | |
| Rotation | | N/A | |
| Accessories | Included | Installation Guide, Screws | |

Tray for Flip 2

| | | | |
|-----------------|--------------------------|----------------------------|---|
| Mechanical Spec | Dimension (mm) | Set | 835(W) x 1631.1(H) x 850.6(D) |
| | | Package | 1650(W) x 860(H) x 208(D) |
| Weight (kg) | Set | Set | 34.5 |
| | | Package | 41.5 |
| Color | | Light Gray | |
| Connectivity | Extra Connectivity Ports | USB 1 | |
| | | USB External (In/Out) 1 | |
| | | Touch Out 1 | |
| | | HDMI-In 1 | |
| | | HDMI-Out(Screen Share) 1 | |
| NFC 1 | | | |
| Accessories | Included | Installation Guide, Screws | |
| Feature | Special | H/W | Easy install with dock connector Front facing connector for BYOD usage |



About Samsung

Samsung inspires the world and shapes the future with transformative ideas and technologies. The company is redefining the worlds of TVs, smartphones, wearable devices, tablets, digital appliances, network systems, and memory, system LSI, foundry and LED solutions. For the latest news, please visit the Samsung Newsroom at <http://news.samsung.com>.

For more information

For more information about Samsung Interactive Display, SMART LED Signage, SMART Signage, and Business Monitor, visit www.samsung.com/business or www.samsung.com/displaysolutions

Copyright © 2018 Samsung Electronics Co. Ltd. All rights reserved. Samsung is a registered trademark of Samsung Electronics Co. Ltd. Specifications and designs are subject to change without notice. Non-metric weights and measurements are approximate. All data were deemed correct at time of creation. Samsung is not liable for errors or omissions. All brand, product, service names and logos are trademarks and/or registered trademarks of their respective owners and are hereby recognized and acknowledged.

Samsung Electronics Co., Ltd.

416, Maetan 3-dong, Yeongtong-gu, Suwon-si, Gyeonggi-do 443-772, Korea

2019-10

www.samsung.com

SAMSUNG