

AMBROSIA

SECOND EDITION

USER MANUAL



WARNING: DO NOT INSERT OR REMOVE ANY PLUGS INTO THE PHONO INPUTS WHILE THE POWER IS ON. SEVERE DAMAGE MAY OCCUR TO THE INPUT STAGE.

What's Included

- Ambrosia 2000 Second Edition preamplifier
- User Manual
- Detachable power cable
- Remote control
- One (1) pair “combo jack” gold-plated RCA adapters

With phonostage:

- Eight (8) pairs RCA shorting plugs

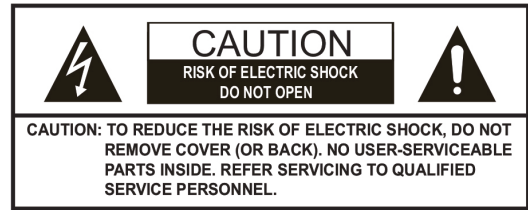
No phonostage:

- Six (6) pairs RCA shorting plugs

Important Safeguards

- All the safety and operating instructions should be read before this product is operated.
- The safety and operating instructions should be retained for future reference.
- All warnings on the appliance and in the operating instructions should be adhered to.
- Follow all instructions.
- The appliance should not be used near water or moisture – for example, in a wet basement or near a swimming pool, and the like.
- Clean only with dry cloth.
- Do not block any ventilation openings. Install in accordance with the manufacturer's instructions.
- Do not install near any heat sources such as radiators, heat registers, stoves, or other apparatus (including amplifiers) that produce heat.
- Do not defeat the safety purpose of the polarized or grounding plug. A polarized plug has two blades with one wider than the other. A grounding plug has two blades and a third grounding prong. The wide blade or the third prong is provided for your safety. If the provided plug does not fit your outlet, consult an electrician for replacement of the obsolete outlet.
- Protect the power cord from being walked on or pinched particularly at the plugs, convenience receptacles, and at the point where they exit from the apparatus.
- Unplug this apparatus during lightning storms or when unused for long periods of time.
- Refer all servicing to qualified personnel. Servicing is required when the apparatus has been damaged in any way such as the power cord or plug is damaged. Other damage may occur if liquid or objects have been dropped or spilled into the apparatus. Dropping the apparatus, exposure to rain, and excessive moisture may cause additional damage.
- Keep the unit in a well ventilated environment. Ensure at least 4" clearance around top and sides.
- CAUTION: These servicing instructions are for use by qualified service personnel only. To reduce the risk of electric shock, do not perform any servicing other than that contained in the operating instructions unless you are qualified to do so.
- WARNING: To reduce the risk of electric shock, do not expose this apparatus to rain or moisture. The apparatus shall not be exposed to dripping or splashing and that objects filled with liquids, such as vases, shall not be placed on apparatus.
- WARNING: The mains plug/appliance coupler is used as disconnect device, the disconnect device shall remain readily operable.

- The lightning flash with arrowhead symbol within an equilateral triangle is intended to alert the user to the presence of non-insulated “dangerous voltage” within the product's enclosure that may be of sufficient magnitude to constitute a risk of electric shock.
- No naked flame sources, such as lighted candles, should be placed on the apparatus.
- **WARNING:** The terminals marked with symbol of “+/-“ may be of sufficient magnitude to constitute a risk of electric shock. The external wiring connected to the terminals requires installation by an instructed person or the use of ready made insulated leads or cords.
- Correct Disposal of this product. This marking indicates that this product should not be disposed with other household wastes throughout the EU. To prevent possible harm to the environment or human health from uncontrolled waste disposal, recycle it responsibly to promote the sustainable reuse of material resources. To return your used device, please use the return and collection systems or contact the retailer where the product was purchased. They can take this product for environmentally safe recycling.
- Keep your packaging! It is custom made for your unit and will effectively protect it for possible future use.
- Be sure to register your product. It is very important to complete the warranty registration form located on our website. Complete and submit the form within 30 days of purchase to activate your warranty.



FCC Warning

This equipment has been tested and found to comply with the limits for a Class B digital device, pursuant to Part 15 of the FCC Rules. These limits are designed to provide reasonable protection against harmful interference in a residential installation.

This equipment generates, uses and can radiate radio frequency energy and, if not installed and used in accordance with the instructions, may cause harmful interference to radio communications. However, there is no guarantee that interference will not occur in a particular installation. If this equipment does cause harmful interference to radio or television reception, which can be determined by turning the equipment off and on, the user is encouraged to try to correct the interference by one or more of the following measures:

- Reorient or relocate the receiving antenna.
- Increase the separation between the equipment and receiver.
- Connect the equipment into an outlet on a circuit different from that to which the receiver is connected.
- Consult the dealer or an experienced radio/TV technician for help.

Caution: Any changes or modifications to this device not explicitly approved by manufacturer could void your authority to operate this equipment.

This device complies with part 15 of the FCC Rules. Operation is subject to the following two conditions: (1) This device may not cause harmful interference, and (2) this device must accept any interference received, including interference that may cause undesired operation.

The device has been evaluated to meet general RF exposure requirement. The device can be used in portable exposure condition without restriction.

Contents

Section	Page
Introduction	6
Noteworthy Features	7
Front Panel Button and Control Definitions	8
Remote Control	9
First Time Operation and Making Menu Adjustments	10-11
Menu Selections	12
Connections	13
Low/High Output Gain Configuration	14
Specifications	15
Warranty Coverage	16-18

Introduction

am-bro-sia \am-'brō-zh(ē-)ə\ *The food of the Greek and Roman gods. Something extremely pleasing to taste or smell or, in this case, to hear.*

The Ambrosia 2000 Second Edition preamplifier is a brilliant example of what a reference, full-featured, stereo preamplifier can be. This fully-balanced system nucleus features giant power supplies, an optional MM/MC phono stage, headphone amplifier, tone and balance controls and an ingenious remote control. Some recent improvements include redesigned internals for improved stability, lower noise and a new home theater bypass function.

There are no physical switches or controls of any kind in the signal path; the user interface is all electronic and galvanically isolated from the audio circuit. All functions are 100% microprocessor controlled and can be controlled from both the front panel as well as the remote control.

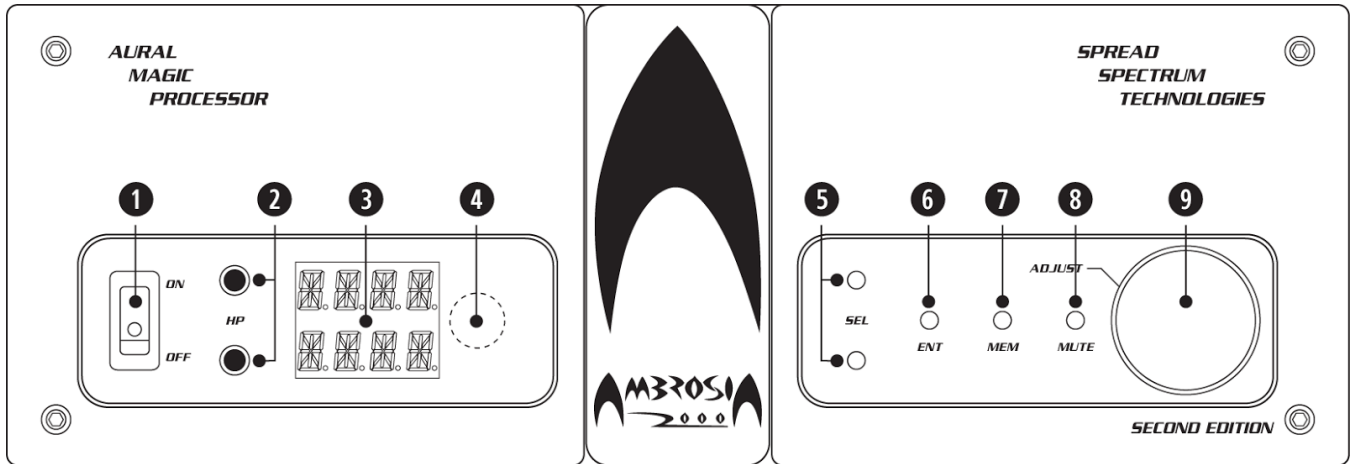
At 50 pounds, the Ambrosia outweighs many power amplifiers! Most of the weight is due to the huge low-EMI power transformer. It features four secondary windings that power each circuit section independently, and in the process, eliminate ground loops. In addition, 15 independent power supply regulators are employed throughout for immunity against AC mains fluctuations. Every attention to detail and function contributes to the final, undeniable conclusion: The Ambrosia is a sonic tour-de-force befitting the finest audio systems.

Noteworthy Features

The Ambrosia 2000 Second Edition is a revolutionary preamplifier in many ways. Below are some highlights.

- Four completely separate sets of transformer windings to power the four main preamp sections: moving coil, moving magnet, line, and display control. An additional 15 independent power supply regulators work in concert to eliminate ground loops and power supply noise.
- Optional phono stage: RIAA equalized, completely separate circuits for both MC and MM cartridge sources. Each circuit has its own set of direct outputs which bypass the internal switching and each has a dedicated user-selectable low cut filter.
- Highly configurable, sophisticated Menu system to tailor virtually every parameter of Ambrosia's robust feature set to your satisfaction.
- A total of nine pairs of inputs:
 - Three main inputs (CD, TUN, AUX)
 - Two tape loop inputs
 - (Optional) phono stage inputs, one each for MM and MC
 - One combination XLR jack that can be used balanced or unbalanced
 - Home Theater Bypass input
- Outputs: two pairs unbalanced and two pairs balanced.
- Two headphone output jacks on the front panel powered by a unique, balanced power buffer idling at 4.5 watts per channel, capable of driving virtually any pair of headphones. The top output is a "switched" output: while in use, the Ambrosia will mute the line output to the connected amplifier.
- Fully balanced design with a sophisticated circuit that generates almost no distortion. Moreover, all of the distortion by-products in the Ambrosia come only from the passive switches and volume control, which are virtually inaudible.
- Highly customizable bass and treble controls.
- Internally adjustable gain settings.
- 14 gauge robust powder coated steel chassis and anodized aluminum front panel.
- Large, easy-to-read front LED display.
- All-aluminum, custom remote control

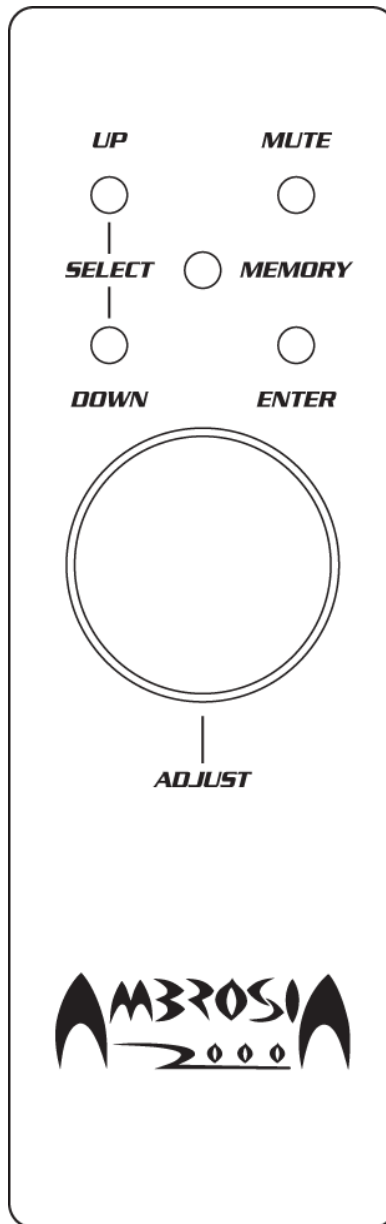
Front Panel Button and Control Definitions



1. **On/Off Switch**
2. **Headphone Outputs**
The top output is a “switched” output: while in use, the Ambrosia will mute the line output to the connected amplifier.
3. **LED Main Display**
4. **Remote Control Sensor**
5. **“SEL”: Menu Select**
These buttons are used to cycle through the USER and MAIN Menus. It is a continuous scroll function in that upon reaching the end of either Menu, the next step starts back at the beginning.
6. **“ENT”: Enter**
After deciding on a Menu option setting, you must push the ENT button to save that setting to memory. The only function that does not require this action is the volume control. After you have entered a setting, the Ambrosia display will revert to master volume.
7. **“MEM”: Memory**
This button allows you to get back to the last Menu option you were on, eliminating having to scroll through the Menu to get there . Ex: You saved an option for the BASL (Bass Left) position and the Ambrosia display has reverted to the master volume. Pushing the MEM button will now call up the BASL position. The MEM button recalls the last Menu position for which ENT was pressed.
8. **“MUTE”: Mute**
Mutes the volume.
9. **“ADJUST”: Shaft Encoder**
This is a multi-function control. Use it to scroll through the various options within a Menu position. It also controls the master volume, balance, bass and treble.

Remote Control

The all-aluminum remote control unit is laid out similarly, and functions identically, to the front panel.



First Time Operation and Making Menu Adjustments

Before you turn on the Ambrosia for the first time, it is important that you read, understand and familiarize yourself with the following for optimal operation and enjoyment. Refer to the section “Front Panel Button and Control Definitions” for descriptions.

First Time Operation

- **IMPORTANT: Insert the supplied RCA shorting plugs into all of the unused input jacks, including the tape inputs.** This will prevent audible clicks and pops while cycling through the Menu and open inputs. None of the inputs are internally shorted when not selected. If you do not use the shorting plugs, there is a chance that clicks and pops may cause speaker damage. *SST will not be responsible for any speaker damage due to negligence in this regard.*
- **Ensure the Ambrosia is POWERED OFF before making or changing any input connections.** Once connections are securely made, push the On/Off rocker switch to On. You will notice that the display shows the Initialization mode (“INIT”). It may take 30 to 40 seconds for the Ambrosia to initialize. After this first initialization period is finished, the display will read “VOL - 69.0” (the lowest volume setting). The Ambrosia will recall the last used volume level for each subsequent time it is turned on, or “- 15.0”, whichever volume level is lower.

Making Menu Adjustments

There are actually two Menu systems in the Ambrosia: USER and MAIN. USER is simply a condensed subset of the MAIN Menu, showing only the most oft-used positions. The following will help familiarize you with Menu operation and settings. For instructional purposes we will concentrate on the MAIN Menu, since it contains all the positions in the USER Menu. Refer to the next section, “Menu Selections”, for a complete list of the USER and MAIN Menu positions.

- Push the bottom SEL button to arrive at the SEL (Source) position. Turning the Shaft Encoder to the right, you can move through the various source options as follows: TUN, AUX, CD, BAL*, HT (Home Theater bypass), MC**, MM**. Push ENT to select your desired input. The main display will then revert to showing the volume.

*BAL refers to the XLR “combo jack” input, which can be used as an additional balanced (or unbalanced via the supplied adapter) input. Note the Menu will always refer to this input as “BAL” even if used as unbalanced.

** If no phonostage is installed, these options will not appear in the Menu.

- Next, push the bottom SEL button until you arrive at MODE. Use the Shaft Encoder to choose one of three options: Stereo, Mono or Stereo Reverse. Note that MODE is a global setting, not unique to each Source position. Save your desired option into memory by pushing ENT.
- Take advantage of the MEM button now. Instead of using the SEL buttons and starting at the top of the Main Menu, push the MEM button to go back to the Mode position. Now push the bottom SEL button to display the next position in sequence, BASL (Bass Left). The display will read “Flat”. You can use the Shaft Encoder to change the bass up or down, if desired. Push the ENT button to enter a desired option. You can continue to

use the MEM button to get back to your last Menu position, the Shaft Encoder to scroll through the options for bass and treble, and the ENT button to save your desired setting.

- The next Menu position is FILT (Low Cut Filter) and will only display with the optional phonostage installed. The options are None, MC, MM or MCMM (applies to both). The phono filters are set at approximately 20 hz.
- From here, pushing MEM and then the down SEL button will take you to LOFT (Low Frequency Turnover). There are four options possible. Be advised that these numbers only indicate the relative area of frequency turnover points. The same holds true for the next position, HIFT (High Frequency Turnover). There are four options available. For LOFT and HIFT, use your ears to determine which sounds best to you.
- Next is COPY (Tape Copy) which allows you to copy from one tape recorder to another. The positions are OFF, T1 >T2 or T2 >T1.
- The next option is TAPE (Tape Monitor). You can select either OFF, MON 1 or MON 2.
- The last Menu position is HTGA (Home Theater Bypass Gain). You can select either -14 or +0. Default is -14 for US units.

All of these functions are mirrored in the remote control and can be adjusted in the same way as above.

Menu Selections

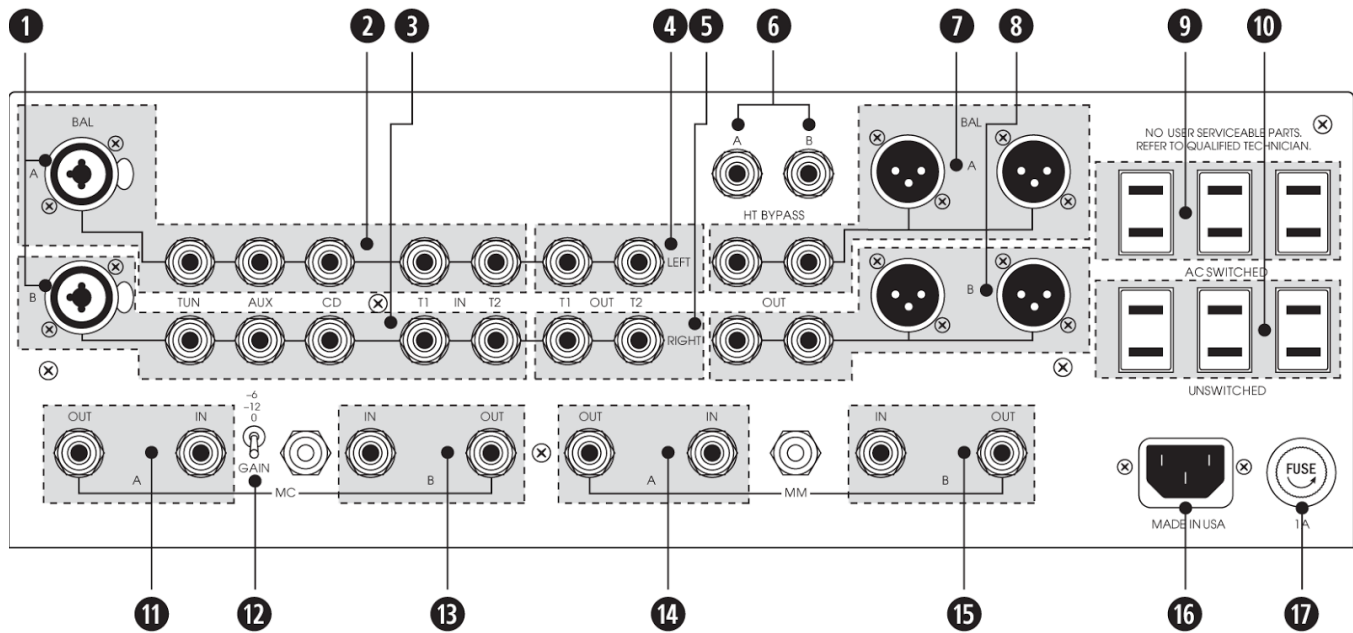
Below is a list of all MAIN Menu positions in sequence starting with Volume. The USER menu is a subset of the MAIN menu and those positions are marked with a “★”. Use the up/down SEL buttons to scroll between Menu positions, the Shaft Encoder to see options within each position, and the ENT button to enter your desired option into memory. The MEM button recalls the last Menu position for which ENT was pressed.

Up/Down Select Buttons (“SEL”)	Shaft Encoder (“ADJUST”)
MENU ★	MAIN or USER
BAL - Balance ★	Adjust left or right
(START) VOL - Volume	-69 to + 20 dB
SEL - Input Select ★	TUN, AUX, CD, BAL*, HT (Home Theater bypass), MC**, MM**
MODE - Mode ★	STER, MONO, STRV (Stereo Reverse)
BASL - Bass Left	-7 to +8
BASR - Bass Right	-7 to +8
BSLR - Bass Left & Right ★	-7 to +8
TRBL - Treble Left	-7 to +8
TRBR - Treble Right	-7 to +8
TBLR - Treble Left & Right ★	-7 to +8
FILT - Low Cut Filter (only with phono option)	NONE, MC, MM, MC & MM (applies to both)
LOFT - Low Frequency Turnover	270H, 330H, 400H, 515H (in Hz)
HIFT - High Frequency Turnover	2.7kHz, 3.2kHz, 3.9kHz, 5.0kHz (in kHz)
COPY - Tape Copy	OFF, T1 > 2, T2 > 1
TAPE - Tape Monitor	OFF, MON 1, MON 2
Home Theater Bypass Gain - HTGA	-14 or +0

*This represents the XLR “combo jack” input (see “Connections” section, next page), which can be used as an additional balanced (or unbalanced via the supplied adapter) input. Note the Menu will always refer to this input as “BAL” even if used as unbalanced.

** If no phono stage is installed, these options will not appear in the Menu.

Connections



Note: On the back panel, “A” denotes the LEFT CHANNEL and “B” denotes the RIGHT CHANNEL in all instances.

- | | |
|--|--|
| <ol style="list-style-type: none"> 1. Left and right XLR “combo jacks”. For RCA use, use the supplied gold-plated RCA adapters 2. Left channel single-ended inputs 3. Right channel single-ended inputs 4. Left channel tape loop outputs 5. Right channel tape loop outputs 6. HT Bypass inputs, left and right 7. Left channel outputs (single-ended and balanced) 8. Right channel outputs (single-ended and balanced) 9. AC switched inputs. Power to a connected device is dependent on Ambrosia being on. | <ol style="list-style-type: none"> 10. AC unswitched inputs. Power to a connected device is independent of Ambrosia being on. 11. Left channel MC output and input* 12. MC Gain switch, in decibels* 13. Right channel MC input and output* 14. Left channel MM output and input* 15. Right channel MM input and output* 16. Main AC inlet 17. Fuse: ¼” 1A slow blow |
|--|--|

*Present if optional phono stage is installed. **WARNING: DO NOT INSERT OR REMOVE ANY PLUGS INTO THE PHONO INPUTS WHILE THE POWER IS ON. SEVERE DAMAGE MAY OCCUR TO THE INPUT STAGE.**

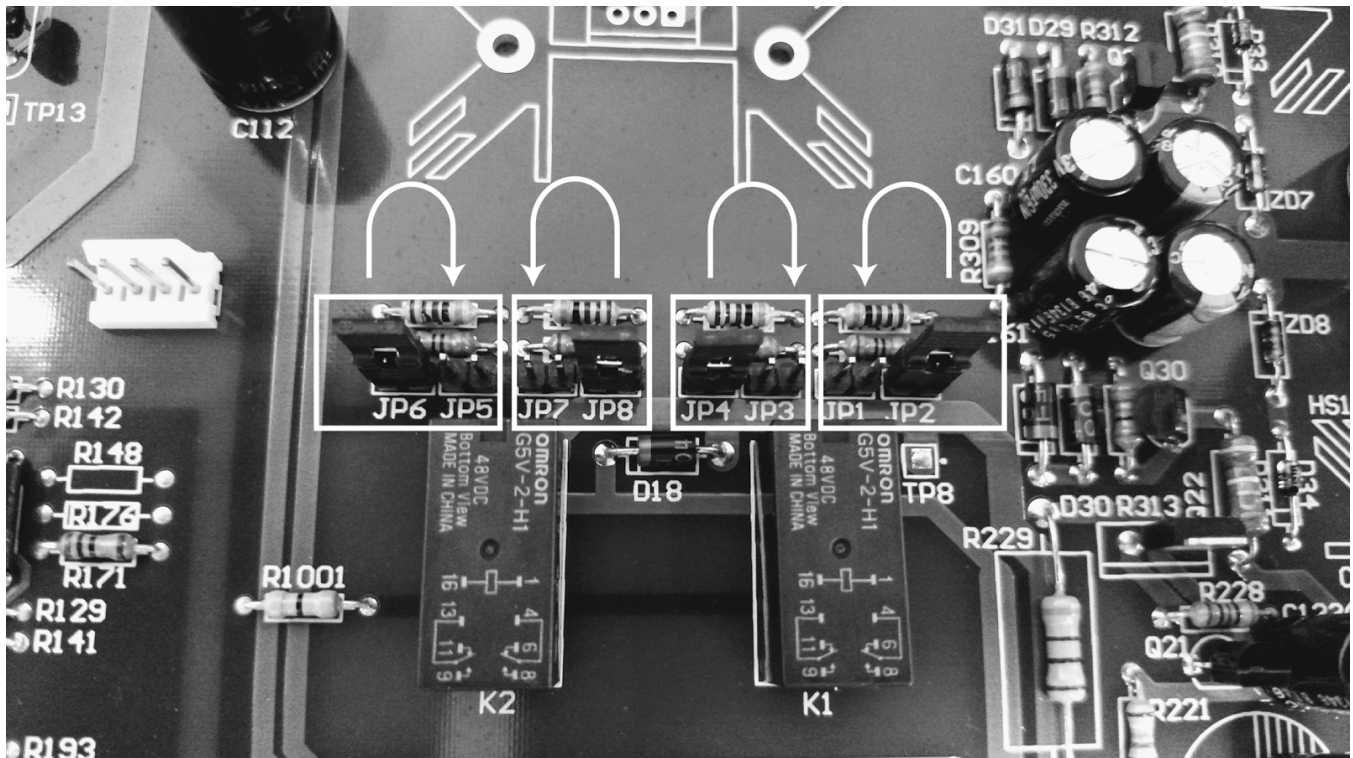
Low/High Output Gain Configuration

The Ambrosia has internal gain jumpers which can be manually configured if necessary. By default, the Ambrosia ships with the jumpers in the low gain positions which is suitable for speakers of medium to high efficiency. In the default configuration, the gain is 6dB, which helps to improve the signal-to-noise ratio.

For speakers of low sensitivity, resulting in not enough gain from the Ambrosia, you can manually move the jumpers to achieve a gain of 20dB.

Changing to High Gain Configuration

1. Unplug power from Ambrosia.
2. Remove top cover.
3. Locate jumpers near the output jacks (see visual aid below). By default, the jumpers are placed on JP2, JP4, JP6 and JP8.
4. Move the jumpers to JP1, JP3, JP5 and JP7.
5. Replace top cover.



Specifications

Input Gain	Phono: MC 64dB, 58dB, 52dB selectable gain; MM 42dB Line: 20dB (or 5. dB with internal jumper)
Tone Controls	± 12dB nominal Turnover points: Bass 200, 300, 400, 500Hz nominal; Treble 2kHz, 3kHz, 4kHz, 5kHz nominal
Maximum Output	10V RMS unbalanced; 20V RMS balanced
Output Impedance	60Ω, all outputs
Input Impedance	100kΩ balanced, 29kΩ unbalanced
Headphone Output	1Ω output; power 475mA (300Ω)
Noise	MC: 70μV, (32μV with 400Hz–20kHz filter) at -0dB (max) gain setting MM: 45μV, (20μV with 400Hz–20kHz filter) Linestage: 10μV (Awt)
THD (Awt, 20Hz–20kHz)	.004% max inputs to main outputs @ 2V RMS output
Frequency Response	MC/MM Phono: ± 0.6dB max deviation (5mV in, RIAA Equalized, 20Hz–20kHz) Linestage: ± 0.25dB max deviation (20Hz–20kHz)
Dimensions	14 ¾" L x 17½" W x 7" H
Weight	50 lbs.

Warranty Coverage

Spread Spectrum Technologies' warranty obligations are limited to the terms set forth below:

Spread Spectrum Technologies, as defined below, warrants this Spread Spectrum Technologies-branded hardware product against defects in workmanship under normal use for a period of FIVE (5) YEARS from the date of retail purchase by the original end user purchaser ("Warranty Period"). If the product has been transferred from the original owner to a second hand owner it has a ONE (1) YEAR warranty, valid from the original date of purchase by the original owner. **If a hardware defect arises and a valid claim is received within the Warranty Period, at its option, Spread Spectrum Technologies will either (1) repair the hardware defect at no charge for labor (the price of parts is not included), using new or refurbished replacement parts, or (2) exchange the product with a product that is new or which has been manufactured from new or serviceable used parts and is at least functionally equivalent to the original product.** Spread Spectrum Technologies may opt that you replace the defective parts with new or refurbished user-installable parts that Spread Spectrum Technologies provides in fulfillment of its warranty obligation. A replacement product or part, including a user-installable part that has been installed in accordance with instructions provided by Spread Spectrum Technologies, assumes the remaining warranty of the original product or ninety (90) days from the date of replacement or repair, whichever provides longer coverage for you. When a product or part is exchanged, any replacement item becomes your property and the replaced item becomes Spread Spectrum Technologies's property. Parts provided by Spread Spectrum Technologies in fulfillment of its warranty obligation must be used in products for which warranty service is claimed. When a refund is given, the product for which the refund is provided must be returned to Spread Spectrum Technologies and becomes Spread Spectrum Technologies's property. **Any shipping charges are the responsibility of the owner.**

EXCLUSIONS AND LIMITATIONS

Spread Spectrum Technologies does not warrant that the operation of the product will be uninterrupted or error-free. Spread Spectrum Technologies is not responsible for damage arising from failure to follow instructions relating to the product's use. This warranty does not apply: (a) to damage caused by use with non-Spread Spectrum Technologies products; (b) to damage caused by accident, abuse, misuse, flood, fire, earthquake or other external causes; (c) to damage caused by operating the product outside the permitted or intended uses described by Spread Spectrum Technologies; (d) to damage caused by service (including upgrades and expansions) performed by anyone who is not a representative of Spread Spectrum Technologies or a Spread Spectrum Technologies Authorized Service Provider; (e) to a product or part that has been modified to significantly alter functionality or capability without the written permission of Spread Spectrum Technologies; (f) if any Spread Spectrum Technologies serial number has been removed or defaced.

TO THE EXTENT PERMITTED BY LAW, THIS WARRANTY AND REMEDIES SET FORTH ABOVE ARE EXCLUSIVE AND IN LIEU OF ALL OTHER WARRANTIES, REMEDIES AND CONDITIONS, WHETHER ORAL OR WRITTEN, STATUTORY, EXPRESS OR IMPLIED. AS PERMITTED BY APPLICABLE LAW, Spread Spectrum Technologies SPECIFICALLY DISCLAIMS ANY AND ALL STATUTORY OR IMPLIED WARRANTIES, INCLUDING, AND WITHOUT LIMITATION, WARRANTIES OF MERCHANTABILITY, FITNESS FOR A PARTICULAR PURPOSE AND WARRANTIES AGAINST HIDDEN OR LATENT DEFECTS. IF Spread Spectrum Technologies CANNOT LAWFULLY DISCLAIM STATUTORY OR IMPLIED WARRANTIES THEN TO THE EXTENT PERMITTED BY LAW, ALL SUCH WARRANTIES SHALL BE LIMITED IN DURATION TO THE DURATION OF THIS EXPRESS WARRANTY AND TO REPAIR OR REPLACEMENT SERVICE AS DETERMINED BY Spread Spectrum Technologies IN ITS SOLE DISCRETION EXCEPT AS PROVIDED IN THIS WARRANTY AND TO THE EXTENT PERMITTED BY LAW, Spread Spectrum Technologies IS NOT RESPONSIBLE FOR

DIRECT, SPECIAL, INCIDENTAL OR CONSEQUENTIAL DAMAGES RESULTING FROM ANY BREACH OF WARRANTY OR CONDITION, OR UNDER ANY OTHER LEGAL THEORY, INCLUDING BUT NOT LIMITED TO LOSS OF USE; LOSS OF REVENUE; LOSS OF ACTUAL OR ANTICIPATED PROFITS (INCLUDING LOSS OF PROFITS ON CONTRACTS); LOSS OF THE USE OF MONEY; LOSS OF ANTICIPATED SAVINGS; LOSS OF BUSINESS; LOSS OF OPPORTUNITY; LOSS OF GOODWILL; LOSS OF REPUTATION; LOSS OF, DAMAGE TO OR CORRUPTION OF DATA; OR ANY INDIRECT OR CONSEQUENTIAL LOSS OR DAMAGE HOWSOEVER CAUSED INCLUDING THE REPLACEMENT OF EQUIPMENT AND PROPERTY, ANY COSTS OF RECOVERING, PROGRAMMING, OR REPRODUCING ANY PROGRAM OR DATA STORED OR USED WITH Spread Spectrum Technologies PRODUCTS AND ANY FAILURE TO MAINTAIN THE CONFIDENTIALITY OF DATA STORED ON THE PRODUCT. THE FOREGOING LIMITATION SHALL NOT APPLY TO DEATH OR PERSONAL INJURY CLAIMS. Spread Spectrum Technologies DISCLAIMS ANY REPRESENTATION THAT IT WILL BE ABLE TO REPAIR ANY PRODUCT UNDER THIS WARRANTY.

Obtaining Warranty Service

Please access and review the resources referred to in the documentation accompanying this hardware product before requesting warranty service. If the product is still not functioning properly after making use of these resources, please contact the Spread Spectrum Technologies representatives or, if applicable, an Authorized Service Provider/dealer using the information provided on the Spread Spectrum Technologies website. A Spread Spectrum Technologies representative or an Authorized Service Provider will help determine whether your product requires service, and if it does will inform you how Spread Spectrum Technologies will provide it. Spread Spectrum Technologies or its Authorized Service Providers will provide warranty service on products that are tendered or presented for service during the Warranty Period, as permitted by law. Spread Spectrum Technologies is not responsible for freight charges to or from our facility for warranty repairs. In accordance with applicable law, Spread Spectrum Technologies may require that you furnish proof of purchase details and/or comply with registration requirements before receiving warranty service. For more details on this and other matters on obtaining warranty service contact your dealer. Recovery and reinstallation of system and application software and user data are not covered under this Limited Warranty.

Service

In the unlikely event there is a problem with your Spread Spectrum Technologies component, please contact your dealer, distributor, or Spread Spectrum Technologies to discuss the problem before you return the component to our manufacturing facility for repair. Products shipped to the factory will be refused and returned freight collect if not accompanied by a Spread Spectrum Technologies Service Department issued return authorization number (RA Number). Return authorization numbers must be prominently displayed on the outside of the box and an accompanying letter describing the problem and re-listing the RA number must be inside the box to qualify for service.

To contact the Spread Spectrum Technologies Service Department:

Telephone: 1-805-466-9973

Fax: 1-805-462-8962

Email: support@sst.audio

Website: <http://www.sst.audio>

Once service has been approved, please follow the following procedure:

1. Fill out the Service Request form located on our website and be sure to document all details.

2. If service is approved we will issue a Return Authorization Number (R/A number) from the Spread Spectrum Technologies Service Department. Be sure to confirm the current shipping address.
3. Insure and accept all liability for loss or damage to the product during shipment to the SST facility and ensure all freight (shipping) charges are prepaid.

The product may also be hand delivered to the California facility if arrangements with the Service Department have been made in advance. Proof of purchase from an authorized Spread Spectrum Technologies dealer, distributor or agent will be required for warranty validation at the time of hand delivery. Use the original packaging to ensure safe transit of the product to the factory, dealer, or distributor. Spread Spectrum Technologies may, at its discretion, return a product in new packaging and bill the owner for such packaging if the product received by Spread Spectrum Technologies was boxed in non standard packaging or if the original packaging was damaged to the point it was unusable. If Spread Spectrum Technologies determines that new packaging is required, the owner will be notified before the product is returned. To purchase additional packaging, please contact your authorized Spread Spectrum Technologies dealer, distributor, or the Spread Spectrum Technologies Service Department for assistance. If you did not purchase the product directly from us and require service please contact your dealer or distributors' service department for information regarding service.

If you feel your authorized dealer or distributor is either unwilling or unable to service your Spread Spectrum Technologies products, please contact our service department by emailing support@sst.audio or calling by phone to discuss and resolve the situation.

Notes



Ph: +1 (805) 466-9973
Fax: +1 (805) 462-8962
Website: www.sst.audio
Email: support@sst.audio

SST ★ AMERICAN HIGH FIDELITY