

## EAST BATON ROUGE

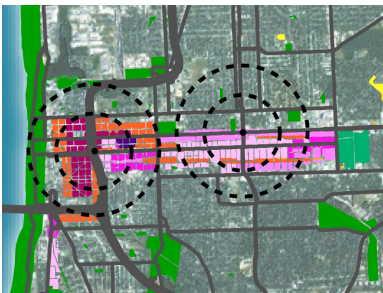
*FuturEBR Comprehensive Plan (2010-2011)*



Fregonese Associates led the team for updating the East Baton Rouge Parish's comprehensive plan. The FUTUREBR plan will guide the physical development of the city and provide a framework within which individuals, businesses and public officials can make decisions that are consistent with the community's vision for the future. The Plan will guide future policy decisions related to land use, urban design, housing, economic development, open space, and transportation in EBR. From the outset this plan is being designed with implementation in mind.



The public was involved in each step of the scenario planning process. Three citywide workshops and four small area workshops captured citizens' visions for the future of East Baton Rouge. The project's website, served as a one-stop shop for information, news, and updates throughout the project. Over 4,000 people have been involved in the creation of the plan.



The key themes of the FUTUREBR planning effort are, revitalizing downtown Baton Rouge, tying together the parishes higher education institutions, including Louisiana State University and Southern University and a neighborhood approach to planning.

A transportation plan has been produced as part of FUTUREBR. As part of the Plan we held a public transportation workshop in which participants prioritized transportation investments in the region. Part of the plan is a completely new transit system for the Parish. In addition the plan contains housing, urban design, neighborhood and environmental elements among others.

### **Contact information:**

Troy L. Bunch  
Director, Baton Rouge City-Parish  
Planning Commission  
1755 Florida St.  
Third Floor  
Baton Rouge, LA 70802  
(225) 389-3144 Office  
(225) 389-5342 Fax  
TBUNCH@brgov.com

FUTUREBR was adopted in September of 2011. The Mayor-President appointed an implementation team to outline goals for the first three years.