

# ILLUSION PLUS

EXCLUSIVELY FOR SALE







# ILLUSION PLUS

---

Pride Mega Yachts' most exciting project to date, 88.5m ILLUSION PLUS has been developed in collaboration with world-class consultants and designers. A combination between performance and comfort, she offers long range world cruising, a contemporary luxury interior and an unparalleled sense of space.

Renowned Dutch naval architecture by AZURE and a sophisticated six-deck exterior designed by Rainsford Saunders Design creates a staggering 3,603 gross tonnage interior volume and an abundance of comfortable space for living and entertaining.

Her state-of-the-art interior, designed by award-winning Sinot Exclusive Yacht Design and fitted out by Greenline Yacht Interiors, incorporates innovative use of luxury materials and maximum natural light. With expansive capacities, extensive use of glass and a double height atrium, walking on board ILLUSION PLUS is a unique spatial phenomenon.

Uniting pure luxury with a sense of adventure, she features a dedicated spa, beauty salon, gymnasium, two Jacuzzi pools and a touch-and-go helipad. The yacht offers accommodation for 12 guests in 6 luxurious cabins, including a stunning 80 square metre master suite with 180-degree panoramic windows, a private deck, vast dressing room and his and hers bathrooms.

The yacht is beautifully finished with quality craftsmanship and high-spec technology including a Rolls Royce propulsion package and a Heinen & Hopman HVAC system.

Designed to enhance onboard experiences, ILLUSION PLUS displays innovative design and yacht construction expertise.







## AZURE NAVAL ARCHITECTURE

---

Constructed in steel and aluminium, Northern European naval architects AZURE focussed their design on producing an efficient and manoeuvrable hull.



# ROLLS ROYCE PROPULSION PACKAGE

---

A diesel-electric propulsion package by Rolls Royce incorporates a high degree of redundancy with 2 x 1,700Kw Azipull thruster pods, 2 x Rolls Royce 2,225 Kw generators and a Rolls Royce 540Kw bow thruster, resulting in an energy efficient operation.







## DYNAMIC POSITIONING SYSTEM

---

Take in the surrounding scenery, spectacular sunrises and dramatic sunsets without dropping anchor. A DPO System, provided by Marine Systems, facilitates the dynamic positioning of the yacht.



ILLUSION PLUS

## RSD EXTERIOR DESIGN

---

Her powerful exterior design by Rainsford Saunders Design combines sleek lines, immense deck spaces and a well thought-out layout.





## VOLUME

---

Measuring a length of 88.5m and with a beam of 15.39m, ILLUSION PLUS has an impressive volume of 3,603 gross tonnes spread across six decks.



# INTERIOR DESIGN BY SINOT

---

Her perfectly furnished, stunning interior by Netherlands-based designer Sinot Exclusive Yacht Design incorporates vast open, bright spaces, fine woods, rare natural stone, exclusive metals and extensive use of glass.





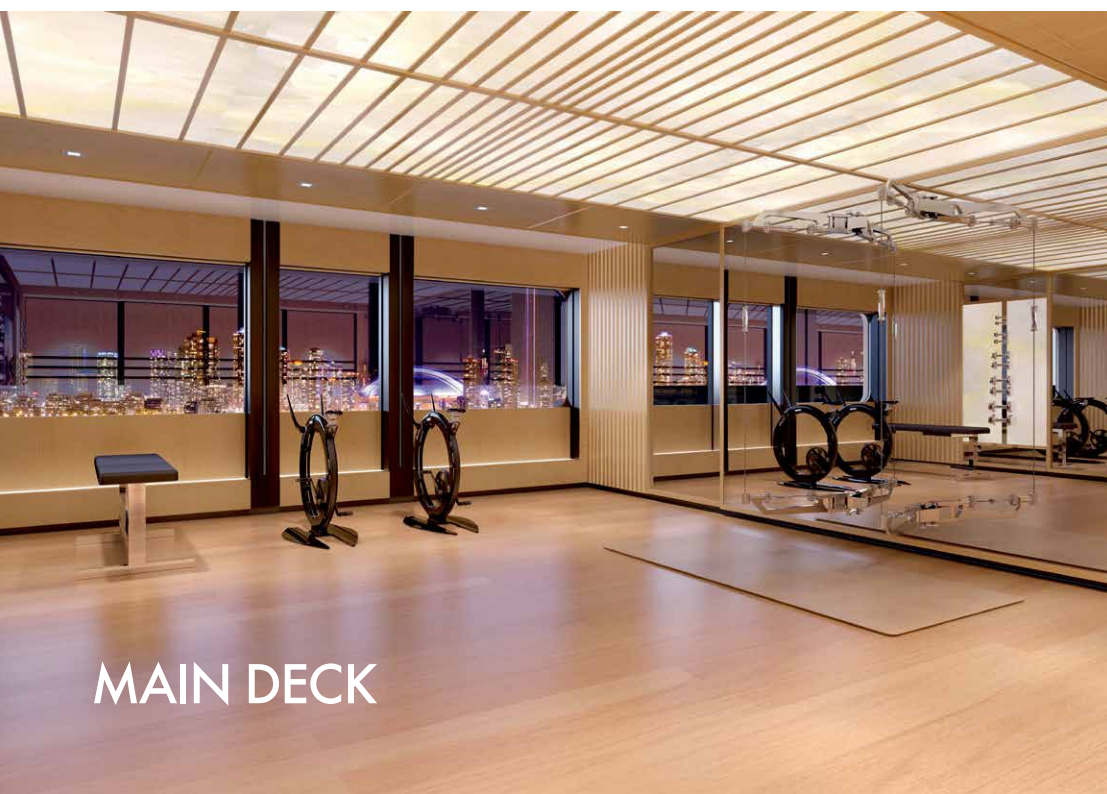
# DOUBLE HEIGHT ATRIUM

---

A double height atrium, vertically connecting the main deck lounge with the upper deck lounge, redefines open plan living. Surrounded by glass and stone, her interior offers an impressive spatial experience, ideal for luxury entertaining.







MAIN DECK







## HVAC SYSTEM

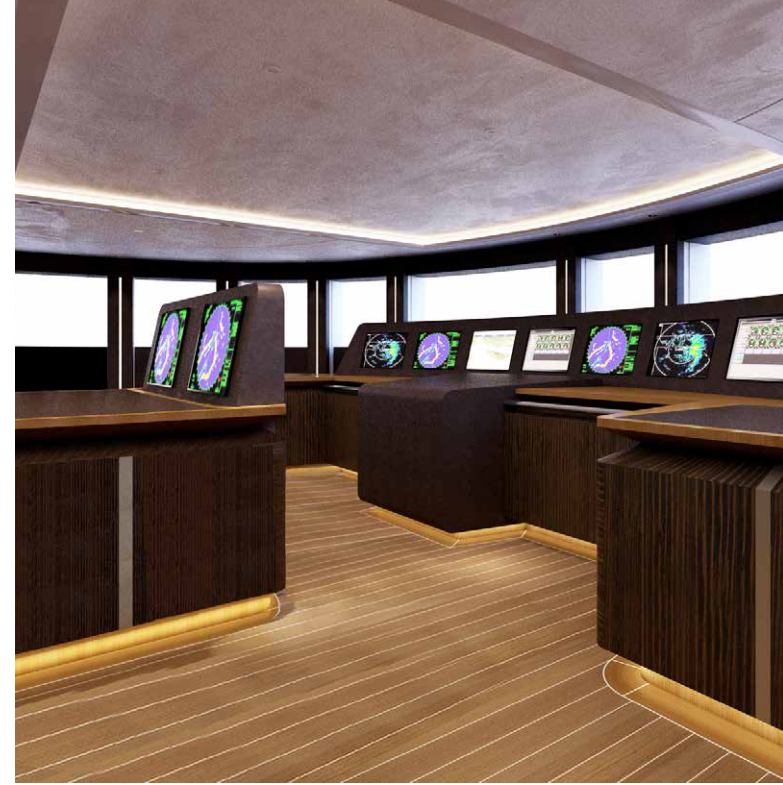
---

The ventilation and air conditioning system, designed by Holland-based Heinen & Hopman, optimises the onboard comfort for guests and crew. An advanced air handling unit ensures the humidity and cleanliness of the air is at a desired level.





BRIDGE DECK







## DEDICATED SPA

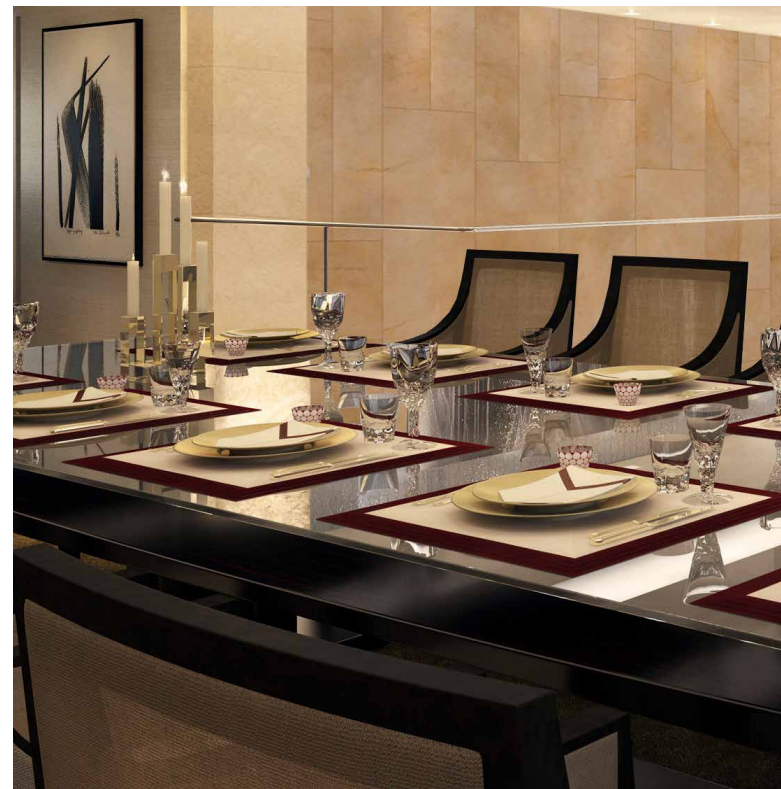
---

Positioned on the bottom deck, a state-of-the-art spa features a serene lobby, a sauna, Hammam and massage room for the ultimate relaxation experience.





UPPER SALON





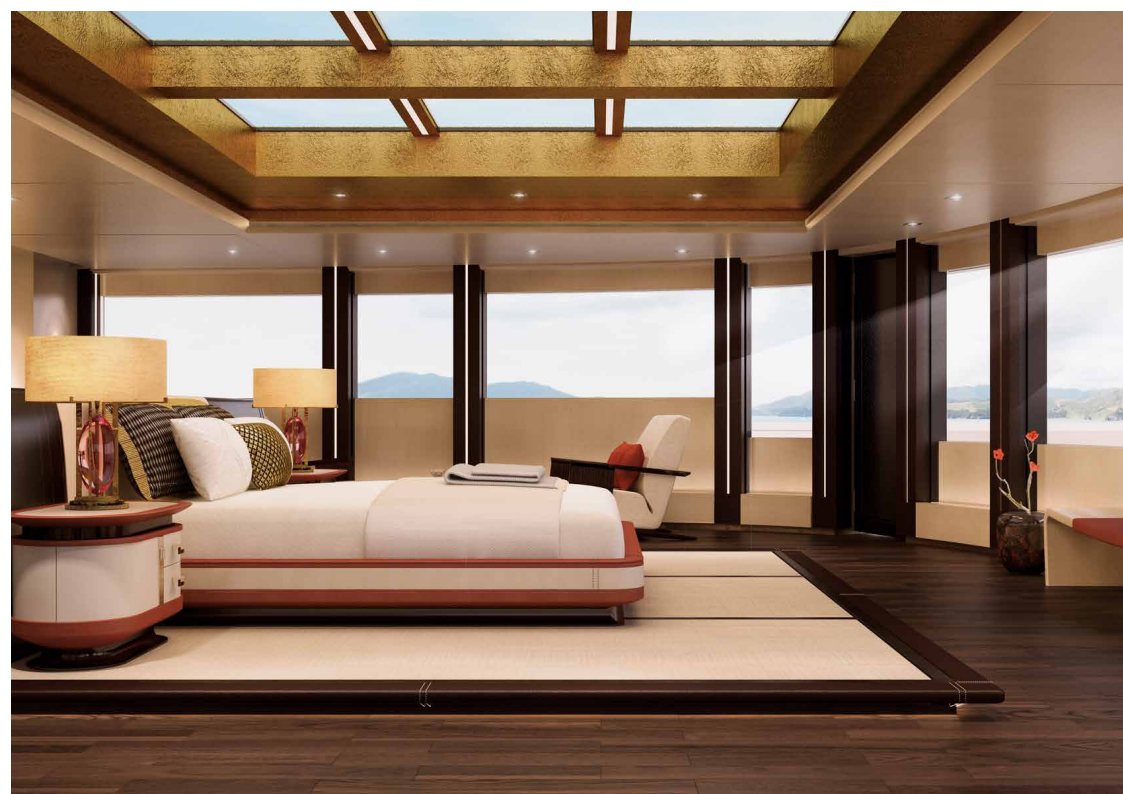


## OWNER'S SUITE

---

At 80 square metres, the incredibly spacious full beam Owner's cabin boasts extra head height, 180-degree panoramic windows and skylight. The suite features a vast walk in dressing room, his and hers bathrooms, office space and a large private deck forward.









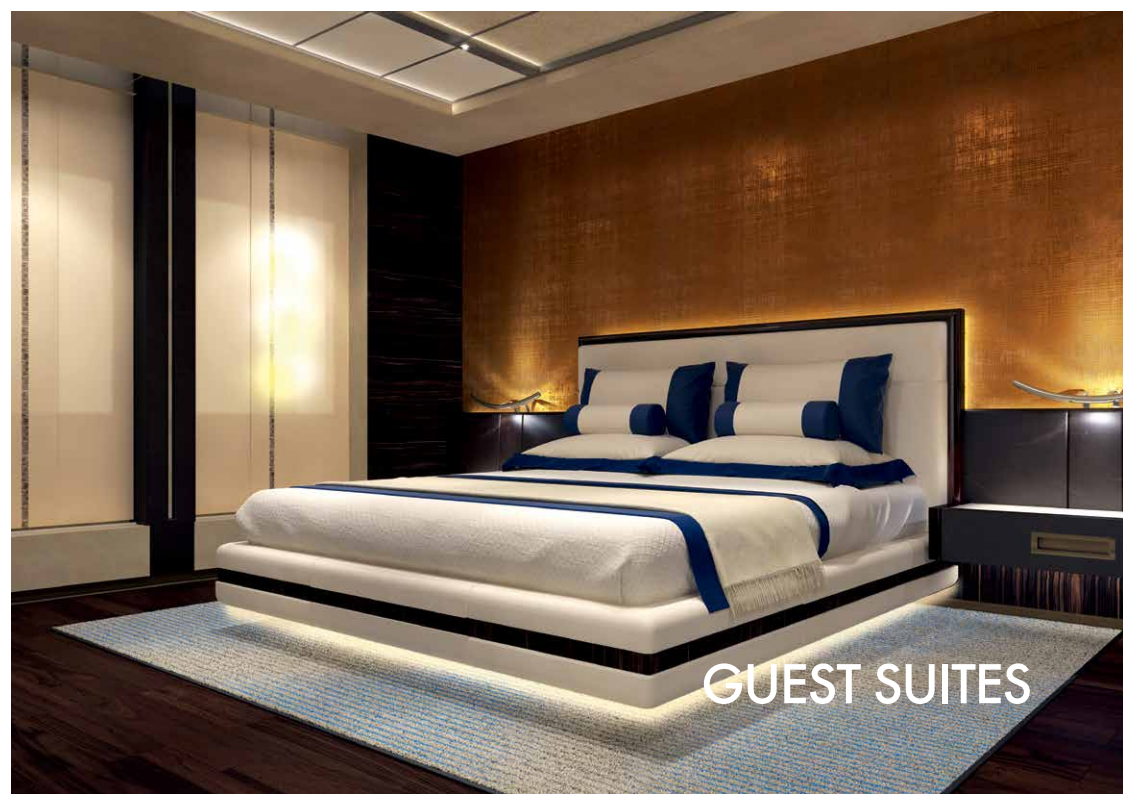
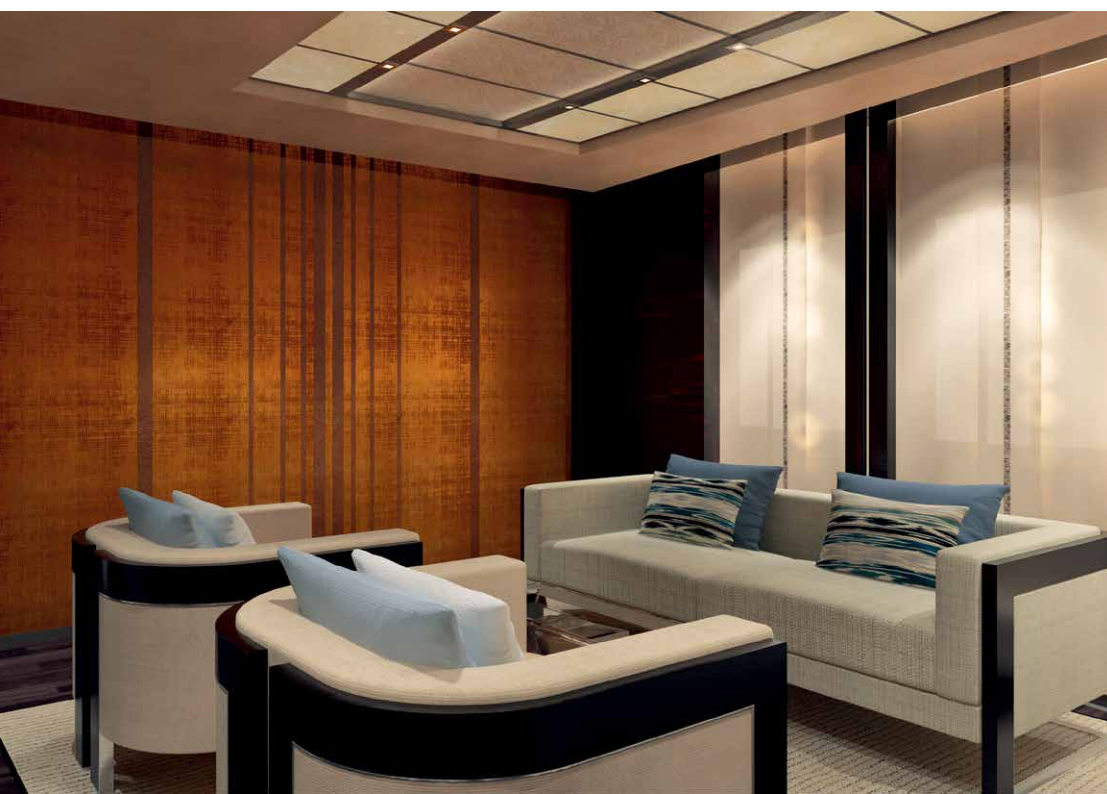
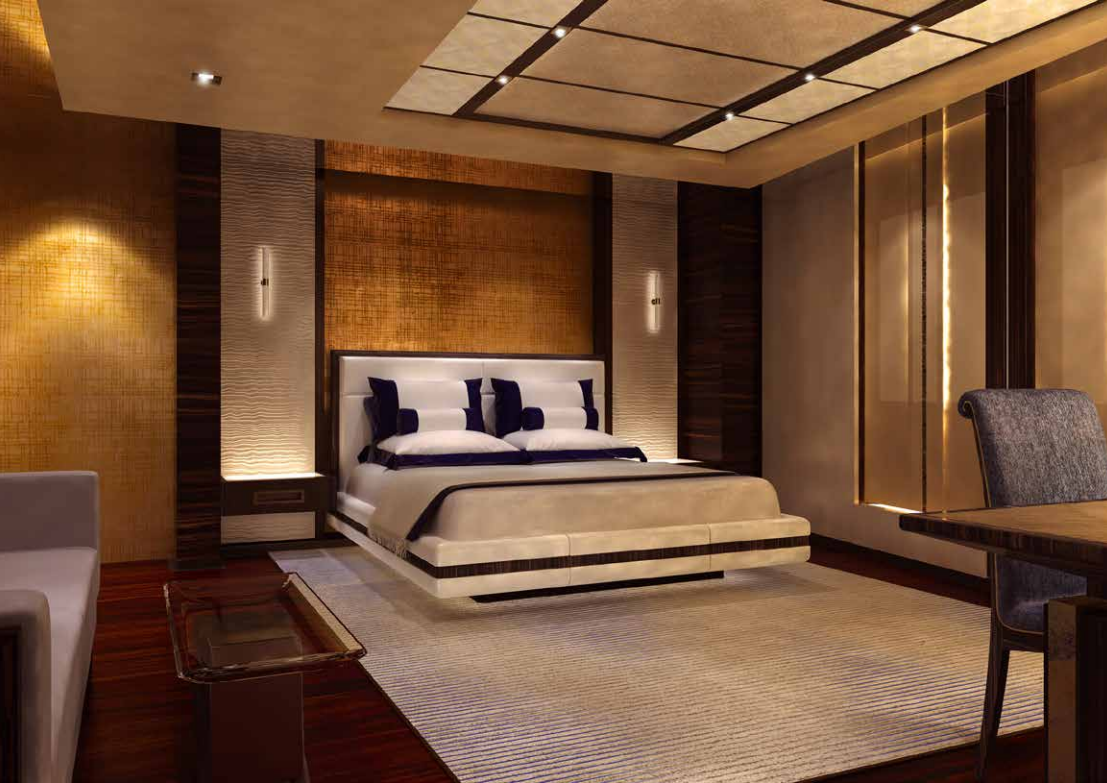
OWNER'S SUITE PRIVATE DECK





VIP SUITE









SUN DECK





SKYLOUNGE





SKYLOUNGE





SUN DECK





OCEAN LOUNGE



# OWNER'S SUPPLY

---

From Baccarat crystal glassware to Hermès crockery, there is a long list of supplied items delivered with the vessel.





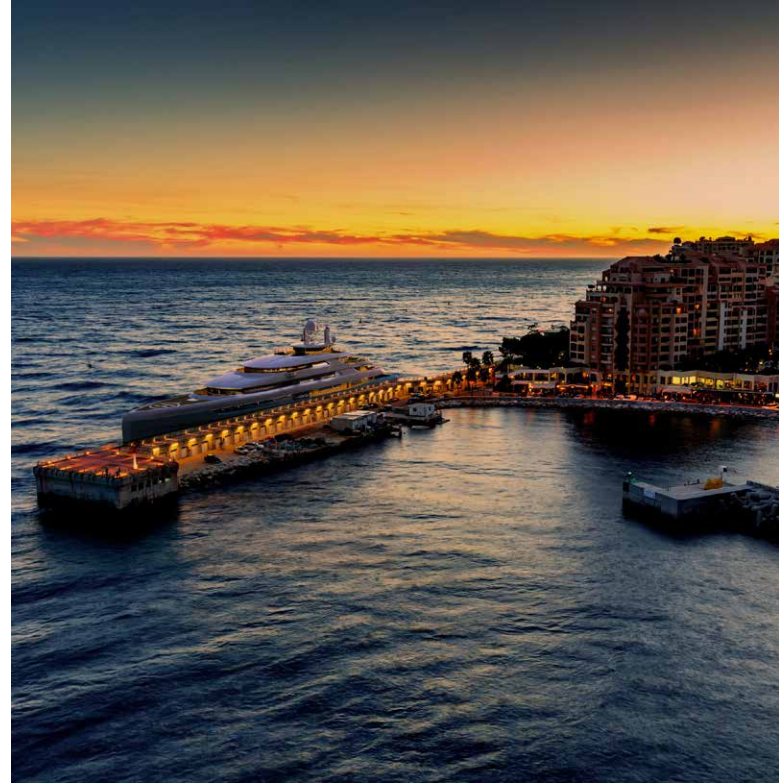
# TENDERS

---

A spacious lower deck garage houses three custom tenders, designed to match the mother yacht: one Pascoe SY9 Beachlander, one Cockwells 9.5m Limousine and one Fassmeer RIR 625. Tenders are included in Owner's Supply.









# GENERAL ARRANGEMENT

SUN DECK

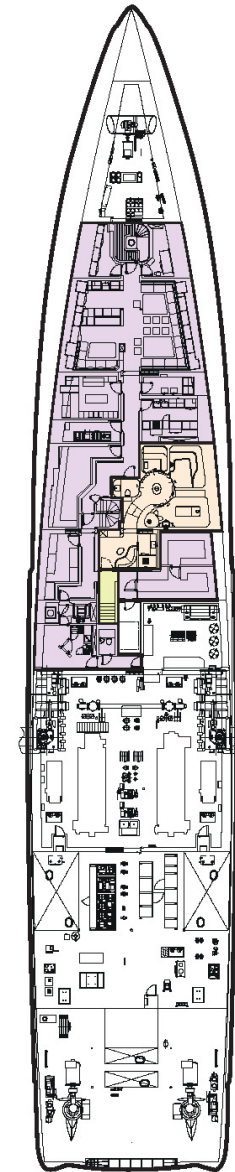
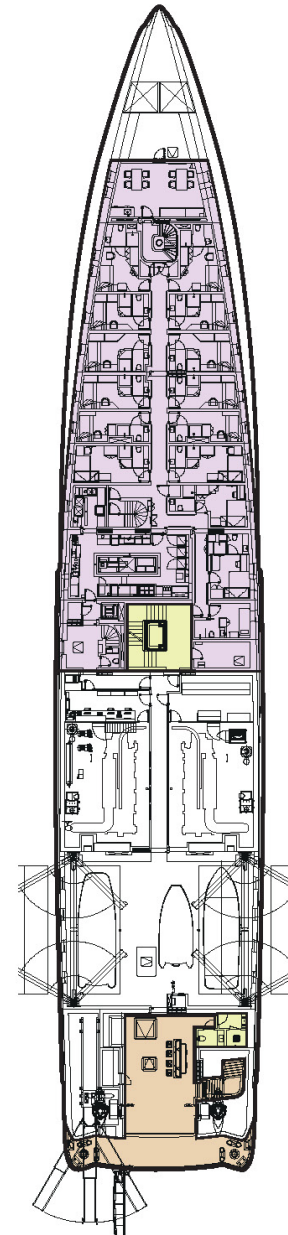
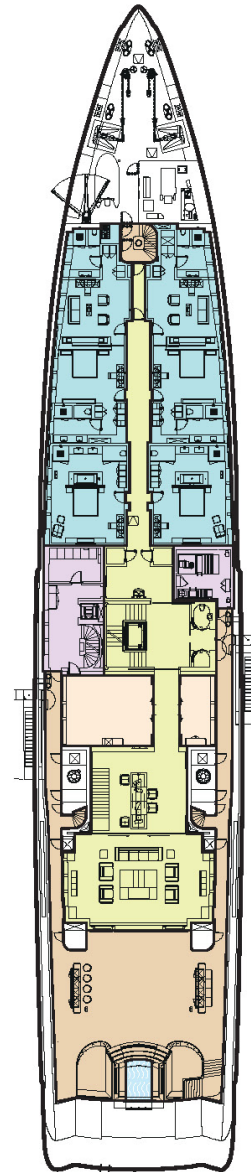
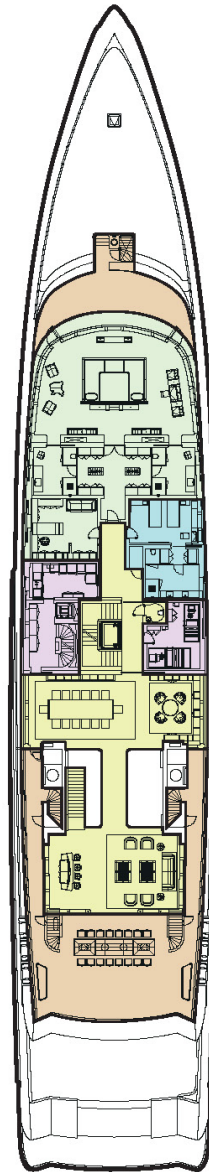
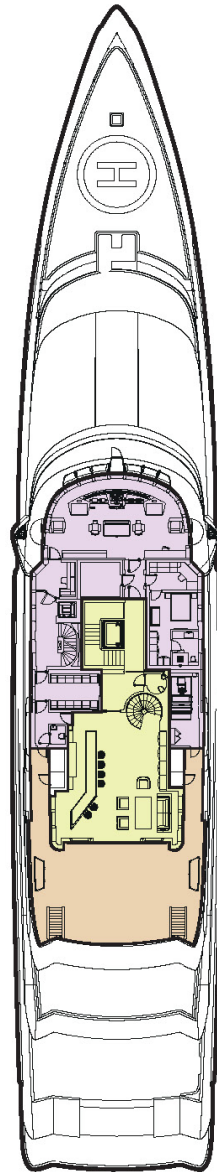
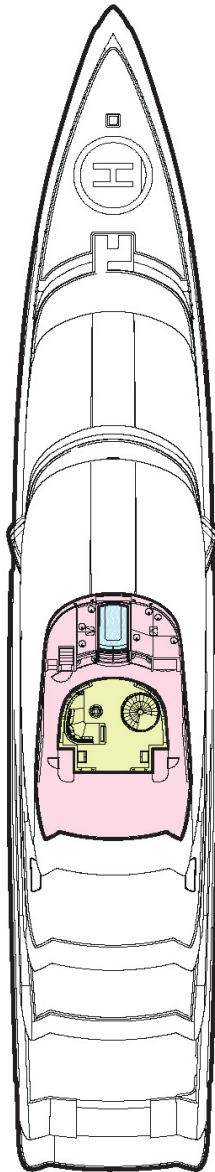
BRIDGE DECK

UPPER DECK

MAIN DECK

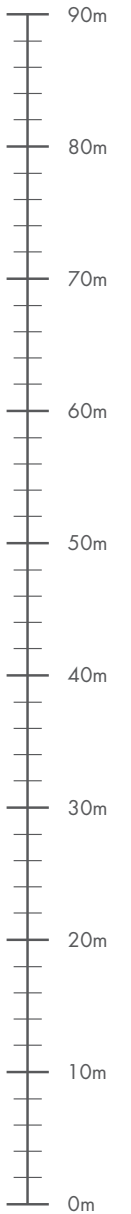
LOWER DECK

BOTTOM DECK



## KEY

- Deck
- Guest Areas
- Master Cabin
- Sun Deck
- Guest Cabins
- Crew Areas





# SPECIFICATION

---

## DIMENSIONS

|        |       |          |
|--------|-------|----------|
| LENGTH | 88.5M | (290'4") |
| BEAM   | 15.4M | (50'6")  |
| DRAFT  | 4M    | (13'1")  |

## SPEED

|          |          |
|----------|----------|
| CRUISING | 14 KNOTS |
| MAX      | 16 KNOTS |

## HULL

STEEL

## SUPERSTRUCTURE

ALUMINIUM

## GROSS TONNAGE

3,603

## DELIVERY DATE

JUNE 2018

## BUILDER

PRIDE MEGA YACHTS

## NAVAL ARCHITECT

AZURE NAVAL ARCHITECTS

## EXTERIOR DESIGNER

RAINSFORD SAUNDERS DESIGN

## INTERIOR DESIGNER

SINOT EXCLUSIVE YACHT DESIGN IN COOPERATION WITH  
PRIDE MEGA YACHTS INTERIOR DEPARTMENT

## GUEST ACCOMMODATION

12 GUESTS IN 6 CABINS  
2 STAFF CABINS

## CREW ACCOMMODATION

25 CREW IN 15 CABINS

## FLAG

MARSHALL ISLANDS

## CLASSIFICATION

ABS A1, COMMERCIAL YACHTING SERVICE, AMS, ABCU, DPS-0, UWILD

## ENGINES

2 X 1,700KW AZIPULL THRUSTER PODS

## GENERATORS

2 X 2,225KW ROLLS ROYCE GENERATORS

## RANGE

5,000 NAUTICAL MILES

## FUEL CAPACITY

261,000 LITRES

## WATER CAPACITY

149,000 LITRES

## STABILISERS

ROLLS ROYCE AQUARIUS 100 ZERO SPEED RETRACTABLE FINs

## COMMUNICATIONS

SATCOM - SAILOR 6110 MINI-C

VHF - SAILOR 6222 VHF / DSC

SSB - SAILOR 6320 MF / HF 250W DSC

LANDLINE / INTERCOM - LTE / IPHONE & UHF

## AUDIO VISUAL / ENTERTAINMENT

HIGH QUALITY INTEGRATED ENTERTAINMENT, LIGHTING AND BLINDS SYSTEM. CRESTON EQUIPMENT USED TO MANAGE THE USER INTERFACE VIA IPAD'S AND/OR IPHONE'S. THE SYSTEM INCLUDES DOME ANTENNAS FOR HIGH SPEED SATELLITE BROADBAND INTERNET CONNECTION AND SATELLITE MULTIMEDIA BROADCASTING.

## TENDERS

1 X PASCOE SY9 BEACHLANDER

1 X COCKWELLS 9.5M LIMOUSINE

1 X FASSMEER RIR 625



# PRIDE MEGA YACHTS

---

Specialising in the construction of 80m -120m superyachts, Pride Mega Yachts is emerging as a key player in Asian yacht construction.

Located in China's Yantai Peninsula, the builders offer European quality with high levels of naval expertise. Combining state-of-the-art technologies and meticulous craftsmanship, Pride Mega Yachts focuses on innovation and sustainability. They pride themselves in their collaborations with experienced and international teams of world-class consultants and designers.

As the Asian market for purchasing and chartering superyachts grows, so does the construction sector and Pride Mega Yachts, with numerous international projects to its name. Once you step on board a Pride Mega Yachts superyacht, it is evident that the future of the shipyard looks bright.





# ILLUSION PLUS

EXCLUSIVELY FOR SALE