



OFFICIAL NOTICE AND AGENDA

Notice is hereby given that the Parks and Recreation Committee of the City of Stoughton, Wisconsin will hold a regular or special meeting as indicated on the date, time and location given below.

Meeting of the:
Date /Time:
Location:
Members:

PARKS AND RECREATION COMMITTEE OF THE CITY OF STOUGHTON
Wednesday, July 18, 2012 @ 6:00
Hall of Fame Room/City Hall (381 E Main St, Stoughton WI 53589)
Eric Olstad, Greg Jenson, Tim Swadley, Paul Lawrence, Donna Olson

CC:

Attorney Matt Dregne, Department Heads, Stoughton Newspapers,
Pili Hougan, Tamara Bader-Fleres, Debbie Blaney, Debbie Myren, Sean Brusegar,
Council Members

* Note-For security reasons, the front doors of the City Hall building (including the elevator door) will be locked after 4:30 p.m. If you need to enter City Hall after that time, please use the entrance on the east side of City Hall (the planning department door). If you are physically challenged and are in need of the elevator or other assistance, please call 873-6677 prior to 4:30 p.m.

Item #	CALL TO ORDER
1	Communications
Item #	OLD BUSINESS
2	Youth Center Update
3	Troll Beach Update
Item #	NEW BUSINESS
4	Approval of the June 6, 2012 Minutes
5	Weeds in Parks
6	Park Facilities Use
7	Division Street Park Lot Line
8	BFO Offers Review
9	Parks and Open Space Plan Update
10	Future Agenda Items
ADJOURNMENT	

PARKS AND RECREATION COMMITTEE MEETING MINUTES

Wednesday, June 6, 2012
Hall of Fame Room



Present: Alderpersons: Tim Swadley, Eric Olstad, Paul Lawrence and Parks and Recreation Director Tom Lynch
Absent and Excused: Greg Jenson
Guests:

Call to Order

By Swadley at 6:00 PM

1. Communications

Olstad expressed concern over the condition of the Yahara ball field. Lynch said Sean Brusegar is working with the softball association to make improvements.

Old Business

2. Racetrack Park Parking Options

Lynch observed Racetrack parking last Friday night. During the 7:00-8:15 period there were four cars parking on Racetrack Road. The lot was at capacity with three diamonds in use. This was encouraging, considering where we were at last year with parking on Racetrack Road.

A conversation with Mike Friedli, a Dunkirk resident on Racetrack Rd resulted in some positives with the changes but still an issue on many nights.

3. Fishing Pier Update

The work date for the fishing pier is Saturday, August 11 at Riverside, beginning at 8:00 am. The deck build should only take one day and the pier should be ready to install after the 11th.

After the pool project is complete Lynch will be working with Carl Chenoweth on the engineering and placement of the cement attach point for the pier.

4. Pool Update

Troll Beach will be ready to open Saturday June 9. Everything should be in place for the opening except the shade structure.(3 weeks)

This week Street and Parks crews filled the pool, set the ropes, carpeted the platform, cleaned the shelter, brought sand for the beach, outfitted the concession stand and placed play structures.

Benschop Concrete poured a 30X15 slab for the shade structure.

Lynch meets with 14 guards on Thursday. Guard training continues Monday night with Bill Brue.

Aeration and Ionizers will be placed on Thursday by Lakeland Biologists

New signs will be mounted on Friday

5. Youth Center Update

This past month they started a karate program from Karate America. There have been five classes and most students have already received their white belts. This program is held on Tuesdays and Thursdays and will continue until August.

The Lioness Club came in twice last month and made two full meals for the students to enjoy when they got here. This was a great time for everyone and the students are very grateful for the kindness and generosity of this Club.

The basement is 99% finished. The volunteers need only to finish the trim.

The school district is giving 20 computers to create a computer lab in the new space for the students use in the community education classes. They will also replace and put the new computers upstairs.

Greg Hoyte received a grant for \$2000 from RoboTech in Madison to start our own FAB lab in the basement. A FAB lab is a fabrication laboratory where students can make digital fabrications.

Attendance for May was the highest since 2008. (555)

6. Project Tour for Committee

The committee will take about a project tour at the next meeting.

New Business

7. Approval of May 2, 2012 Minutes

Motion by Lawrence, seconded by Olstad, to approve the minutes from May 2, 2012. Motion passed 3-0.

8. BFO Quarterly Review

The committee looked over the first quarter reports for the four BFO offers from the Recreation department. No action taken.

9. Future Agenda Items

BFO Update

Youth Center Report

Weeds in Parks

Project Tour for Committee Members

Adjournment

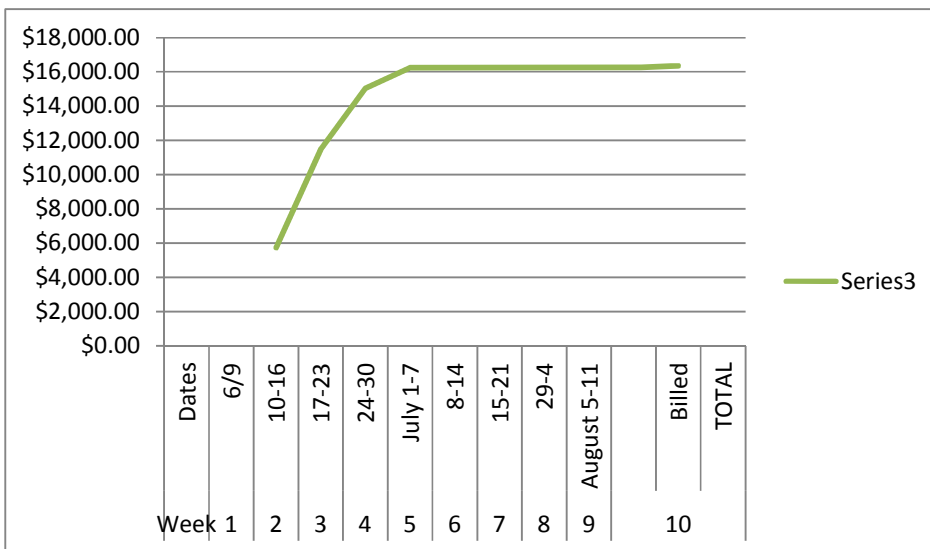
Motion to adjourn at 6:33 PM by Lawrence, seconded by Olstad. Motion passed 3-0.

Troll Beach Update

July 2, 2012

1. The projected revenue for 2012 was \$21,000. We have over 16,000 to date. The weather has been a big factor. Guard hours and costs are up to meet the demand.
2. The water tests have been well below the standards for beaches. Low is a good thing in water testing.
3. The shade structure should be arriving and installed this week.
4. The birthday room has not been completed. Parks labor has been tied up.

Week	Dates	Weekly Attendance	Weekly Revenue	
1	6/9	317	\$1,100.00	
2	10-16	1227	\$4,632.99	\$5,732.99
3	17-23	1913	\$5,759.91	\$11,492.90
4	24-30	1686	\$3,547.90	\$15,040.80
5	July 1-7	252	\$1,210.00	\$16,250.80
6	8-14	0	\$0.00	\$16,250.80
7	15-21	0	\$0.00	\$16,250.80
8	29-4	0	\$0.00	\$16,250.80
9	August 5-11	0	\$0.00	\$16,250.80
10		0	\$0.00	\$16,250.80
	Billed		\$102.50	\$16,353.30
TOTAL		5395	\$16,353.30	



Youth Center Update

1. Youth Center kids have been busy working at the Community Garden plot
2. A new volunteer program with Skaalen Home is in the works. This program consists of getting job training with tasks such as taking residents for walks.
3. Greg is developing a program to recycle batteries as a business experience.
4. Greg is meeting with possible granters for funds to complete the new computer lab in the basement room. This is collaboration between Cummins, the Schools, the Library and the Youth Center.
5. Attendance for June: 302 Lowest month this year but normal for June.

Parks and Open Space Plan

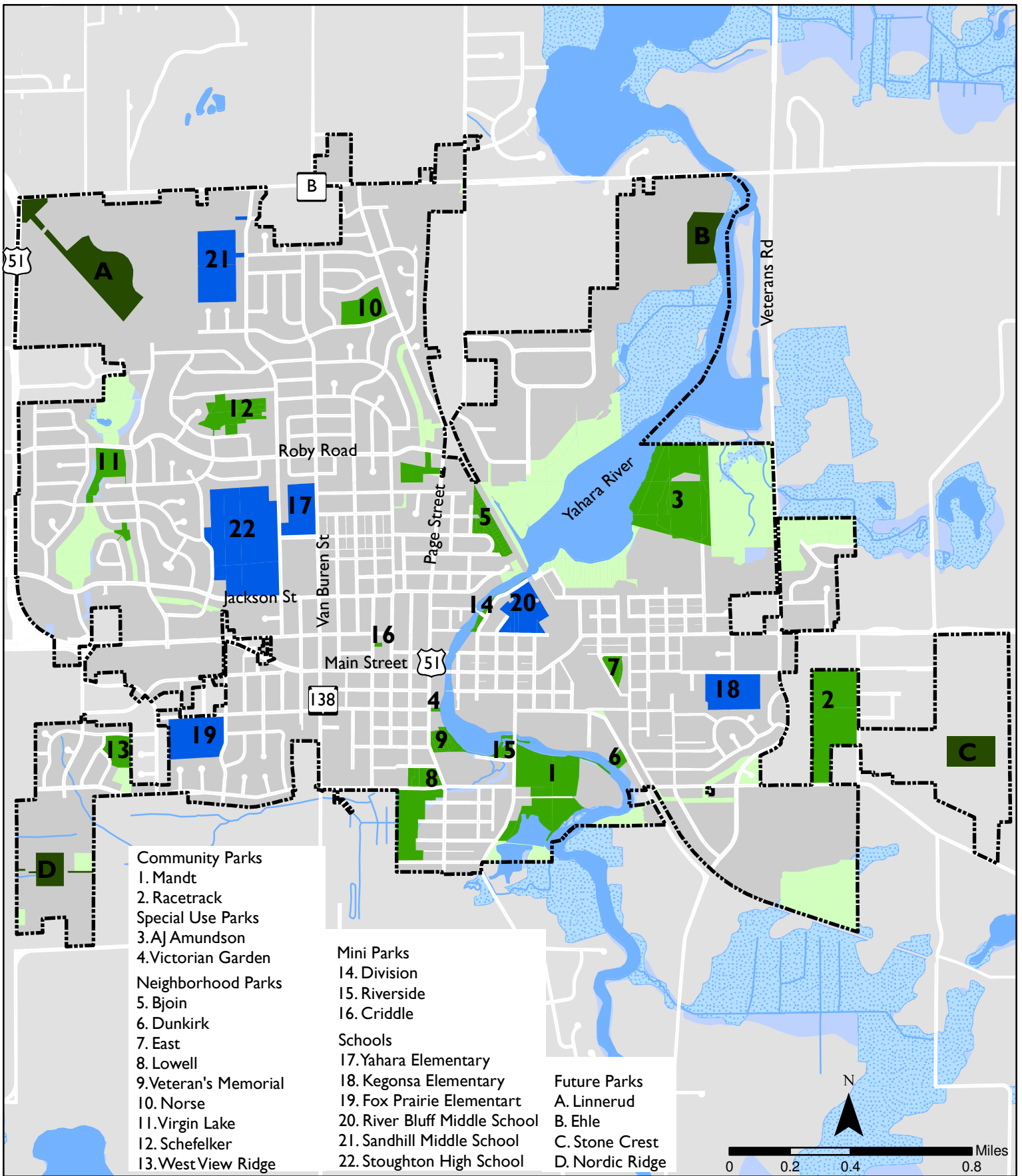
The 2008 Parks and Open Space Plan needs updating in 2013 to keep the City eligible for State and Federal grants. The current plan is very solid. We can choose to hire a consulting firm to guide us through the process, or work through the update ourselves at a lower cost but more time.

Estimates for a consultant range: Provided Wednesday



STOUGHTON YOUTH CENTER ATTENDANCE

																			Mon.
MON.	1995	1996	1997	1998	1999	2000	2001	2002	2003	2004	2005	2006	2007	2008	2009	2010	2011	2012	Undup
Jan	672	1030	926	852	343	297	376	616	442	442	617	665	605	532	389	554	272	690	94
Feb	571	1054	973	856	495	368	514	657	545	717	774	668	516	486	430	610	275	642	138
Mar	639	1014	999	764	706	552	945	657	625	709	785	659	512	492	527	681	560	675	116
April	983	1119	951	975	932	328	599	564	661	935	608	530	671	564	561	595	345	502	101
May	874	1072	874	967	533	487	653	525	537	921	596	416	654	562	448	510	362	555	95
June	442	1020	720	834	796	728	605	465	504	678	511	386	407	419	403	84	161	302	75
July	618	1099	690	901	707	543	615	577	602	649	654	416	532	440	304	44	228		
Aug	442	673	892	823	605	650	931	774	550	835	546	594	567	411	400	105	214		
Sept	1043	1096	945	1012	449	329	810	823	354	507	532	564	469	360	465	210	478		
Oct	1144	1734	1420	898	510	493	691	792	496	783	486	586	521	225	510	185	731		
Nov	807	1292	910	390	525	295	347	580	303	698	672	672	576	255	551	50	701		
Dec	840	922	595	417	321	288	362	483	350	978	696	419	378	344	515	268	624		
TOT.	9075	13125	10895	9689	6922	5358	7448	7513	5969	8852	7477	6575	6408	5090	5503	3896	4951	3366	619
Undup		1386	1289	1237	921	841	1718	1351	895	598	302	306	259	251	265	238	442		
H.S.											866	245							
Fem											695	1459	1910	1788	2002	1105	2060		



Future Parks and Open Space

City of Stoughton POSP

Legend

- Park
- Future Parks
- Passive Open Space / Stormwater
- School



Project # 2208
September, 2007

Map 5

From: Michael Stacey
Sent: Thursday, June 21, 2012 2:08 PM
To: 'Dan Spransy'; Donna Olson
Subject: RE: 100 S Division St

I have attached a copy of the survey.

Dan – please note, you will need more than 13 feet to bring your fence into compliance. The fence needs to be 6 inches from the side lot line.

Michael P. Stacey
Zoning Administrator/Assistant Planner
City of Stoughton
381 E. Main Street
Stoughton, WI. 53589

p - 608-646-0421
c - 608-209-7768
f - 608-873-5519
e - mstacey@ci.stoughton.wi.us

Hours M-F 7:30 am - 4:30 pm
Website: www.cityofstoughton.com/planning

From: Dan Spransy [<mailto:dan@cooper-spransy.com>]
Sent: Thursday, June 21, 2012 2:05 PM
To: Donna Olson
Cc: Michael Stacey
Subject: RE: 100 S Division St

Thank you very much. In the meantime I will get you a copy of the survey I had done, should be tomorrow.

Thanks again.

Dan Spransy

From: dolson@ci.stoughton.wi.us [<mailto:dolson@ci.stoughton.wi.us>]
Sent: Thursday, June 21, 2012 1:53 PM
To: dan@cooper-spransy.com
Subject: RE: 100 S Division St

Good Afternoon Dan,
I will need to make some inquiries here to determine the appropriate committee(s) to review your request and get back to you.

donna

From: Dan Spransy [<mailto:dan@cooper-spransy.com>]
Sent: Thursday, June 21, 2012 1:31 PM
To: Donna Olson
Subject: 100 S Division St

Mayor Olson,

My name is Daniel Spransy at 100 S Division St in Stoughton. When we bought this house 3.5 years ago there was a very run down fence on the property that we ended up replacing last summer. Michael Stacey and I have been working together to make sure we know if the fence is for sure on our lot as even though the fence was in the same spot when we bought the house, he wants to make sure it is on our lot. I could not find the lot lines, so this spring I ended up hiring a surveyor to figure out where the lot lines are. We were quite surprised at our findings as the fence extends about 13 feet in to Division St park. This means that not only is my fence in the park 13', but my shed and chicken coupe are also in the park. When we bought this house it was extremely run down and overgrown. We have put a tremendous amount of work in to the yard cleaning it up including removing 2 trees that were technically in the park as we now know. One of those trees had died and fell on my house, the other fell in a wind storm and destroyed my old chicken coupe and part of my new fence. We have put a lot of time and money in to our yard, specifically that strip that we now know is owned by the city. We also had plans this summer to clean up the bushes next to our house and landscape around them with hostas. We have put that on hold now that we know it is in the park, but the city has not maintained any of that since we moved in. We had to clean that area up as well, trim the bushes down, rake out a tremendous amount of old leaves and branches etc to get it looking somewhat presentable.

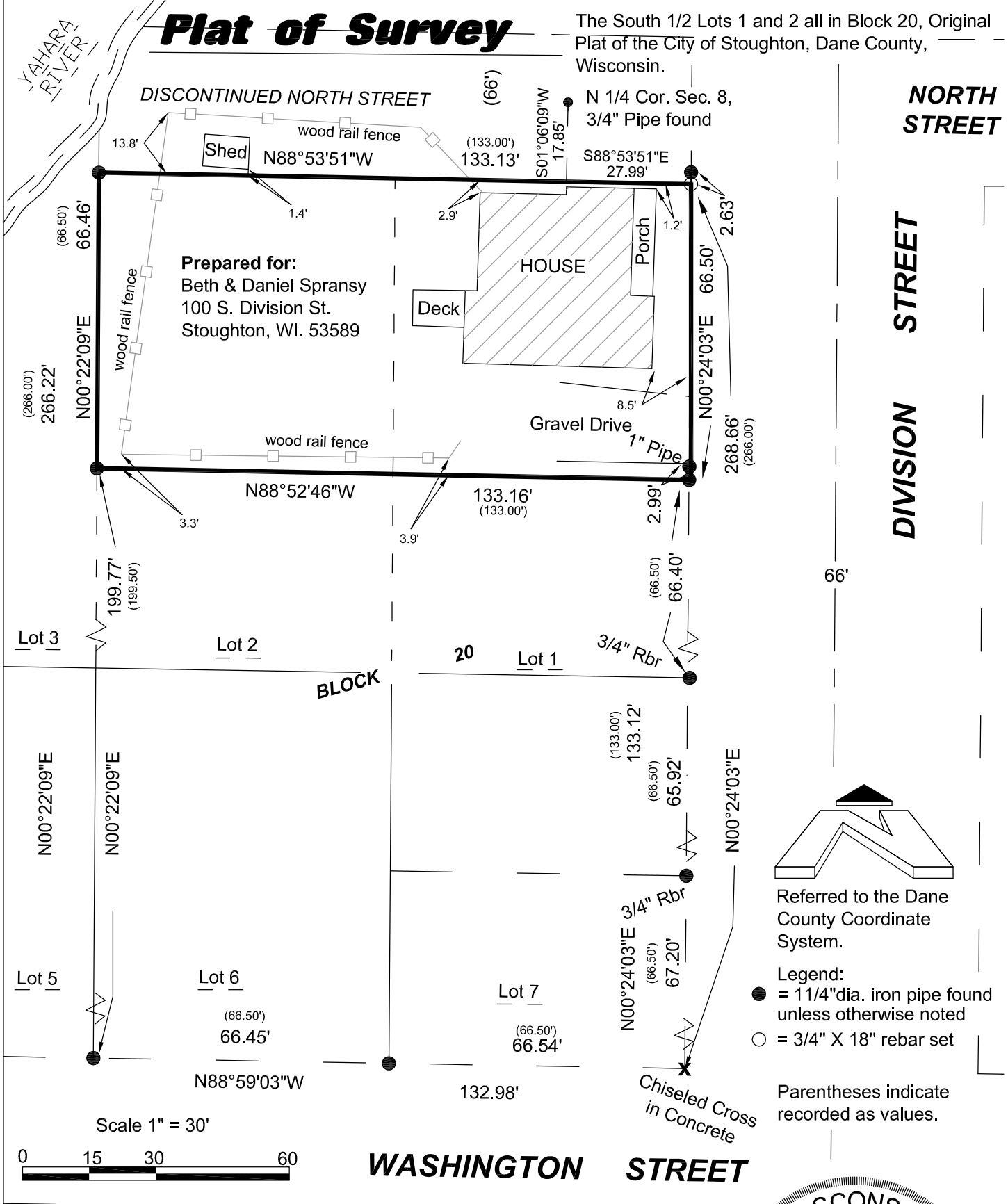
I would love the opportunity to be able to purchase this 13' x 132' section so that there is no remaining question on who should maintain it, and I can leave the fence and shed/chicken coupe where it is. As I have already put quite a bit of money in to the lot, I would like to offer \$1,000 plus I will pay for the surveying fees and any other fees associated with the transaction.

I can have the survey to you by tomorrow, please let me know if there is anything else you need from me. I have included a few before pictures for you to see what it used to look like. We continue to work on the house but with 3 kids and such an immense amount of work it is a gradual project. Thank you for considering this.

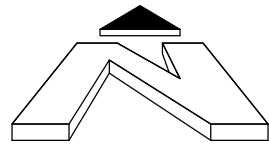
Dan Spransy
608-217-3767

Plat of Survey

The South 1/2 Lots 1 and 2 all in Block 20, Original Plat of the City of Stoughton, Dane County, Wisconsin.



Prepared for:
Beth & Daniel Spransy
100 S. Division St.
Stoughton, WI. 53589



Referred to the Dane County Coordinate System.

Legend:

- = 1 1/4" dia. iron pipe found unless otherwise noted
- = 3/4" X 18" rebar set

Parentheses indicate recorded as values.



Surveyors Certificate

I, David C. Riesop, Wisconsin Registered Land Surveyor, hereby certify that I have surveyed, mapped and monumented the lands as described hereon, and that such map is a true and correct representation of the boundaries of the lands surveyed, including any features shown hereon, and that I have fully complied with the State of Wisconsin Administration Code Number 7.01 in surveying and mapping the same, to the best of my knowledge and belief.

Option One (1 staff meeting, 3 steering committee meetings, 2 public meetings)

Task	Proj. Man. A. Freiwald	Project Planner M. Miklus	Total Labor (hours)
Project Initiation and Management	4		4
Review and Park Inventory	16	2	18
GIS Mapping		24	24
Draft Recommendations	4	16	20
Draft Full Plan and Final Full Plan	12	40	52
6 Meetings Total (See List)	26	12	38
Total Hours	62	94	156
Hourly Rate	\$105	\$80	
Total Labor Costs	\$6,510	\$7,520	
Direct Costs			\$480
GRAND TOTAL, LABOR & DIRECT COSTS			\$14,510

Option Two (1 staff meeting, combined with 1st SC Mtg, plus 2 more SC Mtgs, only 1 public meetings)

Task	Proj. Man. A. Freiwald	Project Planner M. Miklus	Total Labor (hours)
Project Initiation and Management	4		4
Review and Park Inventory	16	2	18
GIS Mapping		24	24
Draft Recommendations	4	16	20
Draft Full Plan and Final Full Plan	12	40	52
4 Meetings Total (See List)	20	8	20
Total Hours	56	90	138
Hourly Rate	\$105	\$80	
Total Labor Costs	\$5,880	\$7,200	
Direct Costs			\$370
GRAND TOTAL, LABOR & DIRECT COSTS			\$13,450

Meeting and Direct Cost Details

	Option 1	Option 2
Meetings		
	Car and Gas Time	Car and Ga Time
Staff Meeting and Park Inventory	55	6 55
Steering Committee Meeting 1	55	4
Public Meeting 1	55	4
Steering Committee Meeting 2	55	4 55
Public Meeting 2	55	4 55
Steering Committee Meeting 3	55	4 55
	330	26 220
Misc Printing Costs	150	150
	480	370

8 Combine visit and 1st SC mtg
4
4 Only One Public Meeting at end of project
4
20