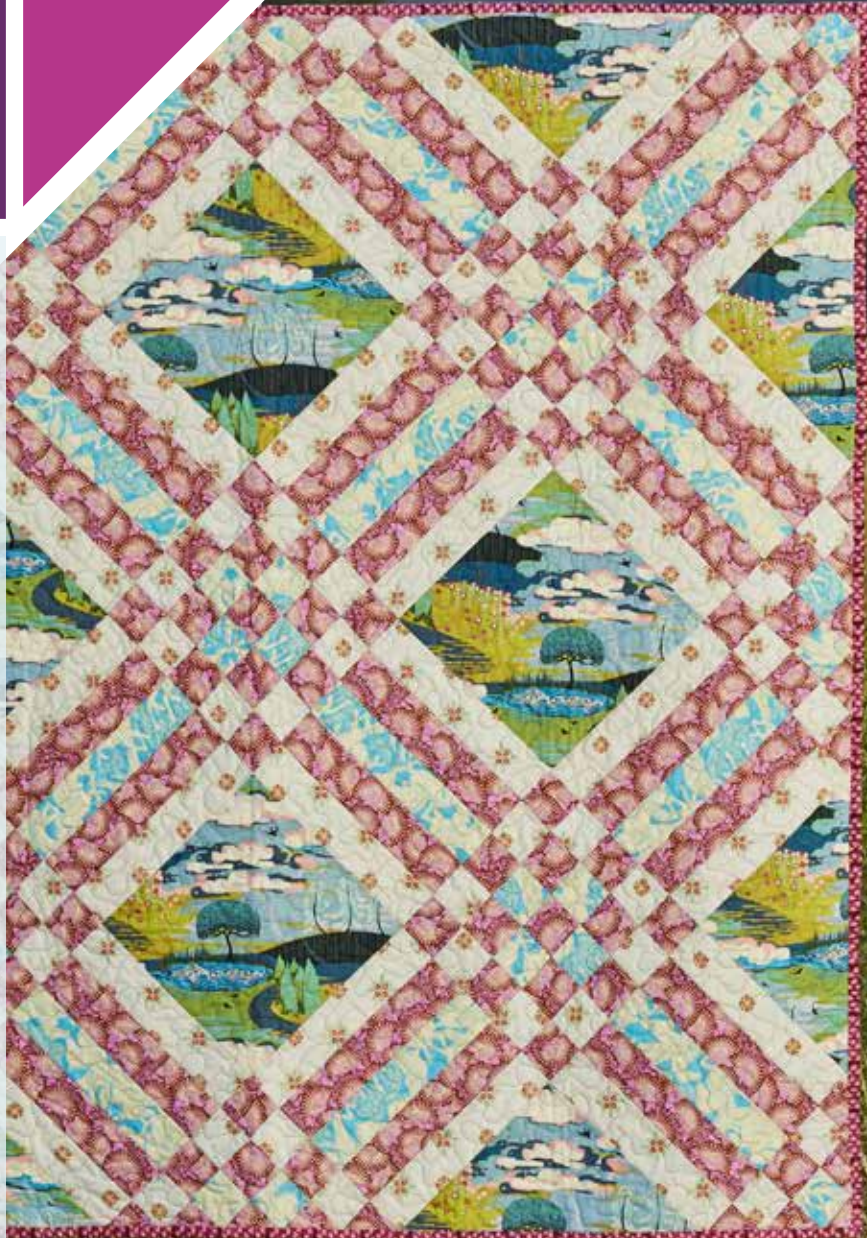




Fibs and Fables

Skill Level:
Advanced
Beginner

**FreeSpirit
presents:**
Fibs and Fables by
Anna Maria Horner



Technique:	Piecing and quilting
Designed By:	Heidi Pridemore
Brand:	FreeSpirit Fabric
Crafting Time:	Longer Term

Fibs and Fables brings to life the elements that exist in so many of our favorite childhood stories. Fun for children's quilts as well as home decor and women's fashion.

Finished Size:

56 1/2" x 56 1/2" (144cm x 144cm)

Fabric Requirements:

(A) Enchanted-PWAH094.VIBRA	2 1/2 yard (2.29m)
(B) Cottage-PWAH099.SNOWY	1 1/4 yard (1.15m)
(C) Minutes-PWAH101.BRICK	1 3/4 yard (1.60m)
(D) Helios-PWAH096.ICEXX	7/8 yard (0.80m)
(E) Plaited-PWAH102.MAGEN	1/2 yard (0.46m)
(Backing) Helios-PWAH096.ICEXX	3 3/4 yard (3.43m)

Additional Requirements:

- Sewing machine
- Rotary cutter/mat/plastic ruler
- Iron/pressing board
- Basic sewing supplies
- 65" x 65" (166cm x 166cm) quilt batting

makeitcoats.com

freespiritfabric.com

FS0562

Page 1 of 5



Cutting:

Note: WOF - Width of Fabric, LOF - Length of fabric

Fabric A, cut:

(12) 14 ¼" x 14 ¼" (36.20cm x 36.20cm)
Cut (12) 10 ½" x 10 ½" (26.67cm x 26.67cm)
squares on point.

Fabric B, cut:

(16) 2 ½" x WOF (6.35cm x WOF)

Fabric C, cut:

(21) 2 ½" x WOF (6.35cm x WOF)

Fabric D, cut:

(8) 2 ½" x WOF (6.35cm x WOF)

Fabric E, cut:

(6) 2 ½" x WOF (6.35cm x WOF)

Backing Fabric, cut:

(2) 65" x WOF (166cm x WOF)

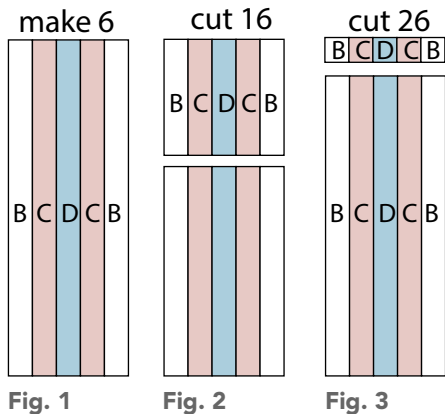
Sewing:

Note: Use a ¼" (0.64cm) seam allowance throughout.

1. Sew (1) 2 ½" x WOF (6.35cm x WOF) Fabric **B** strip, (1) 2 ½" x WOF (6.35cm x WOF) Fabric **C** strip, (1) 2 ½" x WOF (6.35cm x WOF) Fabric **D** strip, (1) 2 ½" x WOF (6.35cm x WOF) Fabric **C** strip, and (1) 2 ½" x WOF (6.35cm x WOF) Fabric **B** strip together lengthwise and in that order to make (1) BDB strip set (Fig. 1). Repeat to make (6) BDB strip sets total.

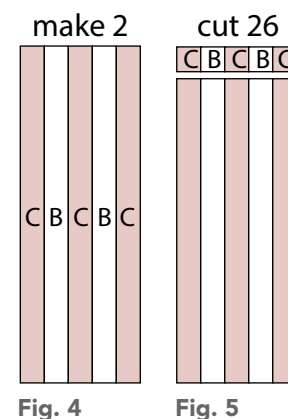
2. From (4) BDB strip sets, cut the BDB strip sets into (16) 10 ½" (26.67cm) BDB squares (Fig. 2).

3. From the remaining (2) BDB strip sets, cut the BDB strip sets into (26) 2 ½" x 10 ½" (6.35cm x 26.67cm) BDB strips (Fig. 3).



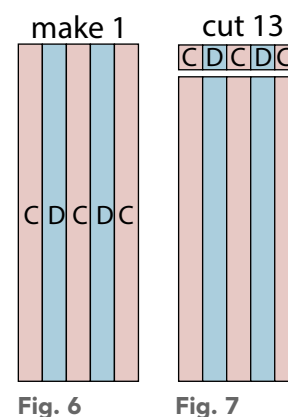
4. Sew (3) 2 ½" x WOF (6.35cm x WOF) Fabric **C** strips and (2) 2 ½" x WOF (6.35cm x WOF) Fabric **B** strips together lengthwise and alternating them to make (1) CBC strip set (Fig. 4). Repeat to make (2) CBC strip sets total.

5. Cut the CBC strip sets into (26) 2 ½" x 10 ½" (6.35cm x 26.67cm) CBC strips (Fig. 5).



6. Sew (3) 2 ½" x WOF (6.35cm x WOF) Fabric **C** strips and (2) 2 ½" x WOF (6.35cm x WOF) Fabric **D** strips together lengthwise and alternating them to make (1) CDC strip set (Fig. 6).

7. Cut the CDC strip sets into (13) 2 ½" x 10 ½" (6.35cm x 26.67cm) CDC strips (Fig. 7).



8. Sew (1) CBC strip, (1) BDB strip, (1) CDC strip, (1) BDB strip and (1) CBC strip together lengthwise and in that order to make (1) CCC block (Fig. 8). Repeat to make (13) CCC blocks total.

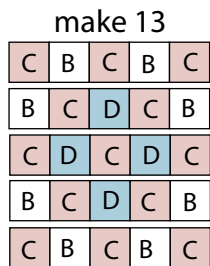


Fig. 8

Assembly:

(Follow Figures 9-11 while assembling the quilt.)

9. Follow Figure 9 and sew (12) Fabric A squares, (16) BDB squares and (13) CCC blocks together to make the quilt top.

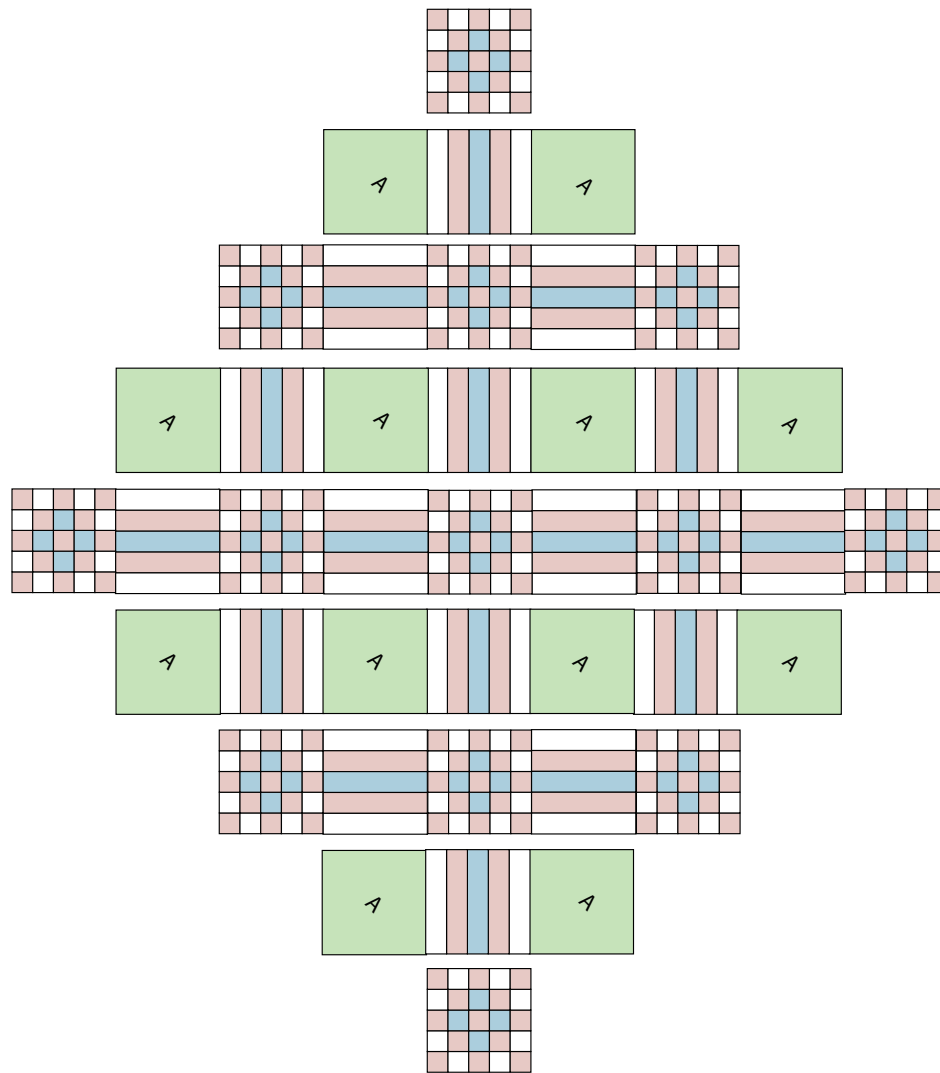


Fig. 9

10. Follow Figures 10 and 11 to square up the quilt top to measure approximately 57" x 57" (145cm x 145cm).

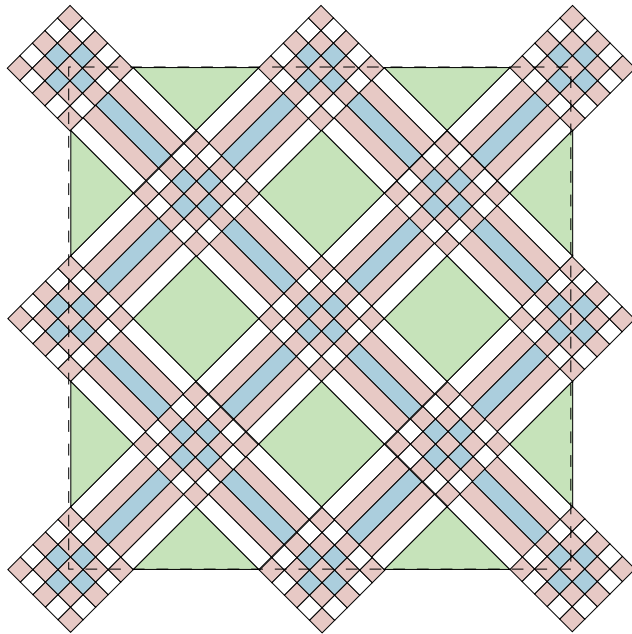


Fig. 10

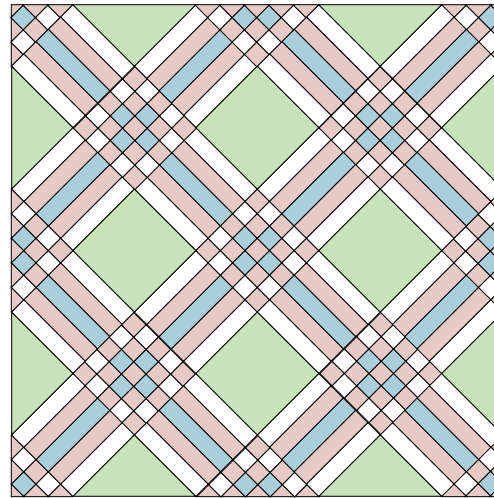


Fig. 11

Finishing:

11. Layer the backing, batting and quilt top. Quilt or tie as desired.
12. Prepare binding from (6) 2 1/2" x WOF (6.35cm x WOF) Fabric **E** strips. Sew strips together into one long binding strip. Press strip in half lengthwise.
13. Carefully trim backing and batting even with quilt top.
14. Leaving an 8" (20.32cm) tail of binding, sew binding to top of quilt through all layers matching all raw edges. Miter corners. Stop approximately 12" (30.48cm) from where you started. Lay both loose ends of binding flat along quilt edge. Where these two loose ends meet, fold them back on themselves and press to form a crease. Using this crease as your stitching line, sew the two open ends of the binding together right sides together. Trim seam to 1/4" (0.64cm) and press open. Finish sewing binding to quilt.
15. Turn binding to back of quilt and blind stitch in place.

Fabric Key

- (A) Enchanted-PWAH094.VIBRA
- (B) Cottage-PWAH099.SNOWY
- (C) Minutes-PWAH101.BRICK
- (D) Helios-PWAH096.ICEXX
- (E) Plaited-PWAH102.MAGEN
- (Backing) Helios-PWAH096.ICEXX



(A)



(B)



(C)



(D)



(E)



(Backing)