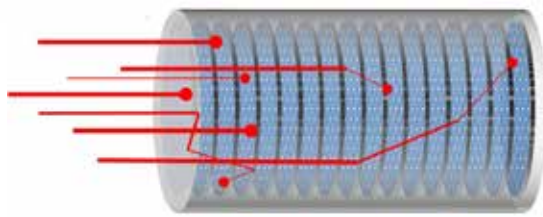
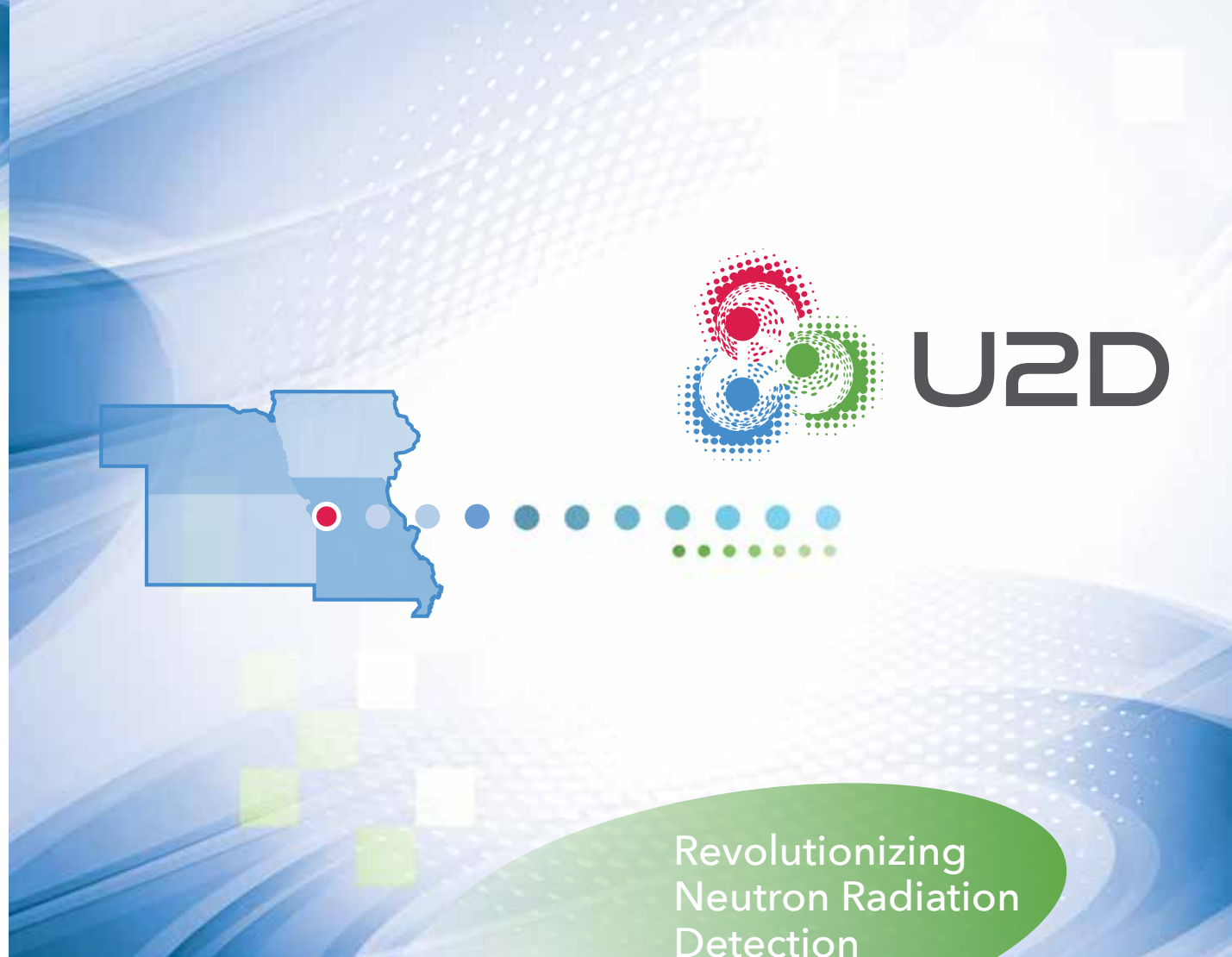


Engineering & Development Services



- Analog, Digital, and Mixed Signal Electronics Design
- API Development
- Portable Device Software Development (iOS and Android)
- Embedded Systems (FPGA and micro-processor)
- Wireless Systems (Specializing in ZigBee and Bluetooth 4.0)
- Electronics Schematic Entry
- Printed Circuit Board Layout and Routing
- Complete Testing Laboratory for Debug, Rework, and Product Verification
- Concept to Production Systems Design
- Quick Turn Development (Concept to Prototype in ~6 Weeks)

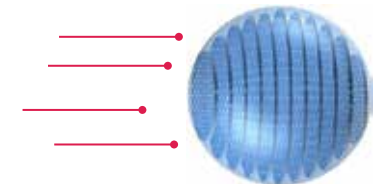


118 N. Conistor Lane, Suite B #244
Liberty, Missouri 64068

Dr. Paul R. Scott | 816 284 9394 | paul@u-2d.com
David I. Hicks | 816 260 3143 | david@u-2d.com

www.u-2d.com

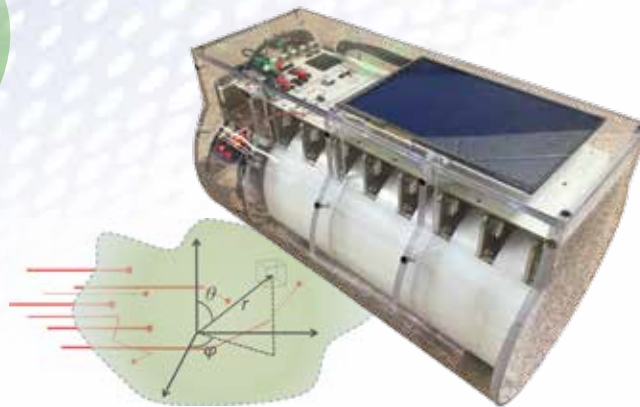
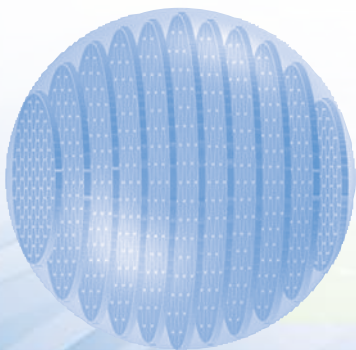
 @neutrondetect



U2D develops systems that are capable of locating, identifying, and energy resolving neutron sources.

Our team spans a broad range of scientific and engineering specialities that include:

- Solid-State Neutron Detection
- Neutron Spectroscopy
- Neutron Dosimetry
- Real Time Digital Signal Processing
- Analog to Digital Conversion
- Power Supply Design
- High Voltage Electronics
- Software and Firmware

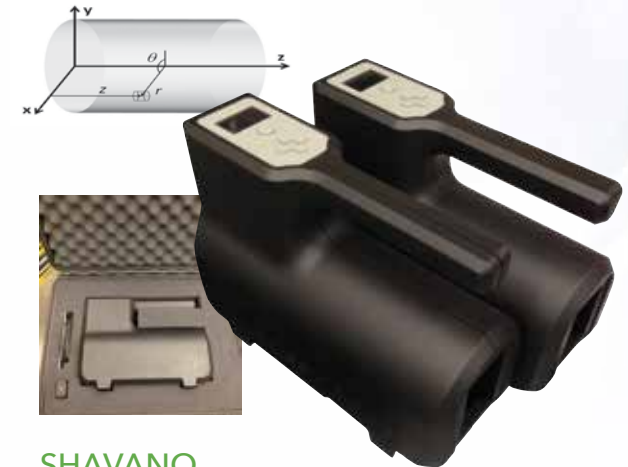


ANTERO

Neutron Spectrometer Neutron Source Localization and Identification

Field portable neutron spectrometer with the ability to localize and identify neutron radiation sources.

- 128 Solid-State Detectors
- Field Portable (~ 20 lbs)
- 8 Hour Battery Life
- 360 Degree Localization
- Thermal to >14 MeV Neutron Identification
- ID Certainty for Heavily Shielded Source <200s
- Gamma Rejection Greater Than 1:1,000,000
- User Expandable Spectrum Library

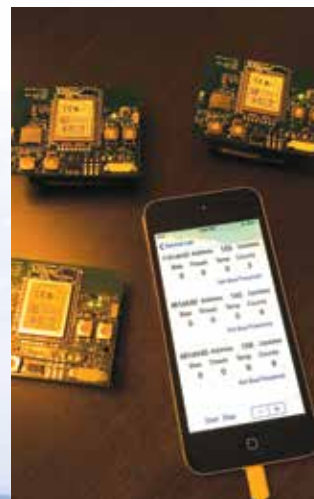


SHAVANO

Neutron Dose Meter Energy Spectra Based Equivalent Dose

The next generation of neutron equivalent dose meters. Lightweight, rugged, and more accurate than anything on the market.

- 8 Solid-State Detectors
- Field Portable (8 lbs)
- >200 Hour Battery Life
- Thermal to >14 MeV Neutron Dose
- Gamma Rejection Greater Than 1:1,000,000
- Response Time: <50 mrem/hr: <30 sec; 0.05 to < 1 rem/hr: <10 sec; >1 rem/hr: < 5 sec
- Factory Adjustable Spectra Matching Available



EOLUS

Personal/Group Radiation Monitoring System Ad Hoc Networking of Radiation Detectors



Long range wireless radiation monitoring in a tiny lightweight expandable system.

- ZigBee Wireless Networking (4000' Line-of-Sight Range)
- Bluetooth LE Central Data Communication
- iOS App Immediately Available
- Android App Under Development
- I2C Communication to Any Type of Daughter Detector Board
- Configurable to Match CONOP Requirements